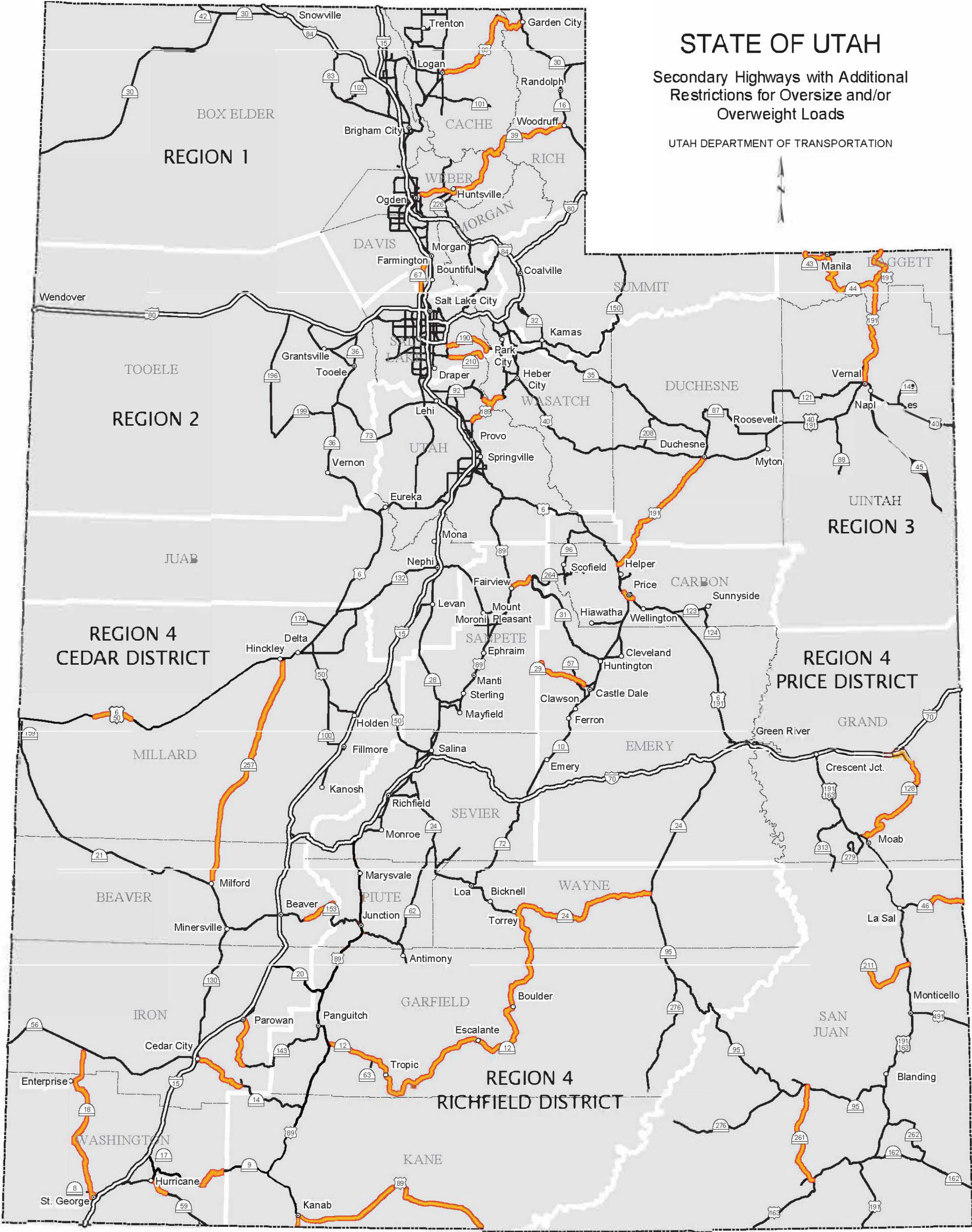


STATE OF UTAH

Secondary Highways with Additional Restrictions for Oversize and/or Overweight Loads

UTAH DEPARTMENT OF TRANSPORTATION



Highways with Vehicle Restrictions

US-6	SR-29	SR-65	SR-92	SR-189	SR-257
SR-9	SR-31	SR-66	US-128	SR-190	SR-261
SR-12	SR-39	SR-67	US-137	US-191	SR-264
SR-14	SR-43	SR-76	SR-143	SR-210	
SR-18	SR-46	US-89	SR-148	SR-211	
SR-24	SR-59	US-89A	SR-153	SR-224	

US Highway 6 from RP 24.8 to RP 27.5

Vehicles or loads exceeding 14 feet in width require two certified pilot/escort vehicles and one police escort. Police escorts may be obtained by calling UHP (801) 965-4518

US Highway 6 at RP 231.75

Vehicles or loads exceeding 17 feet 3 inches in height are prohibited.

US Highway 6 Eastbound at RP 239.3

Vehicles or loads exceeding 20 feet in height are prohibited.

State Route 9 from RP 32.6 to 44.7

See Zion National Park Roadway Restrictions at <https://www.nps.gov/zion/planyourvisit/the-zion-mount-carmel-tunnel.htm>

State Route 12 between the junctions of State Route 89 and State Route 24 (near Torrey, Utah).

Vehicles/loads exceeding 10 feet in width require one certified pilot/escort vehicle.

Vehicles/loads exceeding 12 feet in width require two certified pilot/escort vehicles.

Vehicles/loads exceeding 14 feet in width require, in addition to certified pilot/escort vehicles, two police escorts.

Vehicles/loads exceeding 16 feet in width require three police escorts

Vehicles/loads exceeding 13 feet in height are required to obtain access to bypass roadway at RP 4.6. Please contact UDOT Region 4 for access, (435) 893-4799. For Police Escorts please call UHP (801) 965-4518.

State Route 14 between State Route 130 (RP 0) to US Highway 89 (RP 41)

Vehicles/loads exceeding 14 feet in width require two certified pilot/escort vehicles and a police escort. For Police Escorts please call UHP (801) 965-4518.

State Route 18 between the junctions of Interstate 15 (RP 0) to the junction of State Route 56 (RP 51)

Vehicles/loads exceeding 16 feet in height require three police escorts for detour at RP 8.2 – 8.9 Northbound on/off ramp, using west roundabout bypass. For Police Escorts please call UHP (801) 965-4518.

State Route 24 between State Route 12 (RP 72) (Torrey) and State Routes 24 & 95 (RP 115) (Hanksville)

Vehicles or loads exceeding 10 feet in width require one certified pilot/escort vehicle.

Vehicles or loads exceeding 12 feet in width require two certified pilot/escort vehicles.

State Route 29 between Orangeville and Joe's Valley Reservoir

Vehicles/loads exceeding 12 feet in width and 75 feet in length require two certified pilot/escort vehicles and a police escort.

State Route 31 between RP 0 and RP 8.5

Vehicles/loads exceeding 10 feet in width or 75 feet in length require one certified pilot/escort vehicle.

Vehicles/loads exceeding 12 feet in width require two certified pilot/escort vehicles and two police escorts.

Vehicles/loads exceeding 14 feet in width are prohibited.

State Route 39 between State Route 203 (Harrison Blvd) at RP 9 and State Route 158 (Pineview Reservoir)

Vehicles/loads exceeding 10 feet in width or exceeding 77 feet in length are prohibited.

State Route 39 between State Route 158 (Pineview Reservoir) and State Route 16 (Woodruff at RP 67)

Vehicles/loads exceeding 10 feet in width or 80 feet in length require two certified pilot/escort vehicles.

State Route 43 and State Route 44 between Wyoming (RP 0) and State Route 191 (RP 28)

Vehicles/loads exceeding 95 feet in length require two certified pilot/escort vehicles.

State Route 46 between the Colorado State Line and RP 18

Vehicles/loads exceeding 10 feet in width or 80 feet in length require one certified pilot/escort vehicle.

Vehicles/loads exceeding 12 feet in width or 110 feet in length are prohibited.

State Route 59 between RP 20 and RP 23 (Hurricane Hill)

Vehicles/loads exceeding 12 feet in width or 85 feet in length require one certified pilot/escort vehicle.

Vehicles/loads exceeding 14 feet in width or 95 feet in length require two certified pilot/escort vehicles and two police escorts.

Vehicles or loads exceeding 16 feet in width require two certified pilot/escort vehicles and three police escorts. For Police Escorts please call UHP (801) 965-4518.

State Route 65 between Interstate 80 and Interstate 84 (Henefer to Mt. Green)

Vehicles/loads exceeding 80,000 pounds GVW are prohibited.

State Route 66 between State 65 and Interstate 84

Vehicles/loads exceeding 80,000 points GVW are prohibited.

State Route 67 (Legacy Parkway) between the junction of Interstate 15/US 89 and the junction of interstate 215

All vehicles with five (5) or more axles/80,000 lbs and greater are prohibited except as allowed by Utah State Code 72-3-113.

State Route 76 at RP .34 between the Jct. of I-70 to the Jct. of SR-72

No Loads in excess of 34,000 lbs. tandem axle weight.

State Route 89 (Logan Canyon) between RP 461 and RP 498 (Bear Lake)

Vehicles/loads exceeding 10 feet in width or 80 feet in length require one certified pilot/escort vehicle.

Vehicles/loads exceeding 12 feet in width are prohibited.

State Route 89 Arizona to Kanab (RP 0.0 – RP 63.83)

Vehicles/loads exceeding 16 feet in width and 75 feet in length require two certified pilot/escort vehicles and three police escorts. For Police Escorts please call UHP (801) 965-4518.

State Route 89A between Arizona (Fredonia) and Jct. US-89 Kanab (RP 0 – RP 3)

Vehicles/loads exceeding 16 feet in width and 75 feet in length require two certified pilot/escort vehicles and three police escorts. For Police Escorts please call UHP (801) 965-4518.

State Route 92 between Highway 189 (Provo Canyon) and the Sundance Ski Resort

All oversize loads require two pilot/escort vehicles and two police escort vehicles. For Police Escorts please call UHP (801) 965-4518.

State Route 128 between Interstate 70 and State Route 191 (RP 0 - RP 41)

All oversize vehicles/loads exceeding 55,000 pounds GVW are prohibited.

State Route 137 just south of the Jct. with Christianburg Rd

No loads in excess of 34,000 lbs on a tandem axle group.

State Route 143 between RP 3 and RP 20 (Parowan to Brian Head)

Vehicles/loads exceeding 10 feet width require one certified pilot/escort vehicle.

Vehicles/loads exceeding 12 feet in width require two certified pilot/escort vehicles and a police escort.

Vehicles/loads exceeding 14 feet in width and 75' in length are prohibited. Police escorts may be obtained by calling UHP (801) 965-4518.

State Route 148 from State Route 143 to State Route 14

Vehicles or loads exceeding 26,000 GVW prohibited through Cedar Breaks National Monument.

State Route 150 between Utah/Wyoming Border and State Route 32 in Kamas, Utah

Vehicles/loads exceeding 80,000 pounds GVW are prohibited.

State Route 153 between RP 9 and RP 20 (Elk Meadows to Beaver)

Vehicles/loads exceeding 14 feet in width and 75 feet in length are prohibited.

State Route 189 (Provo Canyon) between RP 7 (SR-52) and RP 21(Wallsburg Jct)

Oversize loads in excess of 10 feet wide are prohibited.

Loads in excess of 10 feet in width may be allowed on a case by case basis with a letter of authorization from UDOT Motor Carrier Division.

State Route 190 (Big Cottonwood Canyon) between Interstate 215 at Knudsen's Corner and the Salt Lake/Wasatch County Line

Vehicles/loads exceeding 9 feet in width or 65 feet in length require one certified pilot/escort vehicle.

Vehicles/loads exceeding 10 feet in width or 80 feet in length require two certified pilot/escort vehicles.

Vehicles/loads exceeding 12 feet in width are prohibited unless a letter of authorization has been obtained from UDOT Motor Carrier Division.

State Route 191 (Indian Canyon) between State Routes 6 and US 40. (RP 251.5 – RP 294.8)

Vehicles or loads exceeding 14 feet in width or 105 feet in length require two certified pilot/escort vehicles and one police escort.

Vehicles or loads exceeding 16 feet in width require three police escorts. Police escorts may be obtained by calling UHP (801) 965-4518

State Route 210 (Little Cottonwood Canyon) between State Route 190 and Alta, Utah

Vehicles/loads exceeding 9' feet in width or 65 feet in length require one certified pilot/escort vehicle.

Vehicles/loads exceeding 10 feet in width or 80 feet in length require two certified pilot/escort vehicles.

Vehicles/loads exceeding 12 feet in width are prohibited unless written approval from UDOT Motor Carrier Division has been obtained.

State Route 211 between State Route 191 and Canyonlands National Park (North of Monticello)

Vehicles/loads exceeding 10 feet in width or 80' in length require one certified pilot/escort vehicle.

Vehicles/loads exceeding 12 feet in width are prohibited unless written approval from UDOT Motor Carrier Division has been obtained.

State Route 224 near Empire Pass/Deer Valley (RP 0) to Sandridge Road (RP 4.3)

RP 0 – RP 1.2 Vehicles/loads exceeding 45' in length are prohibited.

RP 1.2 – RP 4.3 Vehicles/loads exceeding 65' in length are prohibited.

State Route 257 between the junction of State Route 21 (RP 0) and the junction of US-50/6 (RP 69.2)

Vehicles or loads exceeding 14feet in width require two certified pilot/escorts and one police escort. For Police Escorts please call UHP (801) 965-4518.

State Route 261 (RP 7 - RP 10) (Moki Dugway) (State Route 163 to State Route 95)

Oversize/Overweight vehicles or loads prohibited.

State Route 264 between State Route 31 and State Route 96 (Electric Lake to East Fairview)

Vehicles/loads exceeding 12 feet in width or 110 feet in length are prohibited unless written approval from UDOT Motor Carrier Division has been obtained.

Emigration Canyon between the Wasatch Drive/Sunnyside Ave. junctions and State Route 65

Vehicles/loads exceeding 9 feet in width or 65 feet in length require one certified pilot/escort vehicle.

Vehicles or loads exceeding 10 feet in width or 80 feet in length require two certified pilot/escort vehicles.

Vehicles/loads exceeding 12 feet in width are prohibited unless written approval from UDOT Motor Carrier Division has been obtained.

Exceptions

The department may grant written authorization for vehicles engaged in public works projects with an origin or destination within the restricted portion of the highways listed.

Longer Combination Vehicles (LCV's) are exempt from additional pilot/escort vehicle requirements.

The department may grant temporary waivers to highway prohibitions provided additional police and certified pilot/escort vehicles are required. Other safety measures such as road closures, utility vehicle escorts, time of day limitations, may be required before a waiver is granted.