

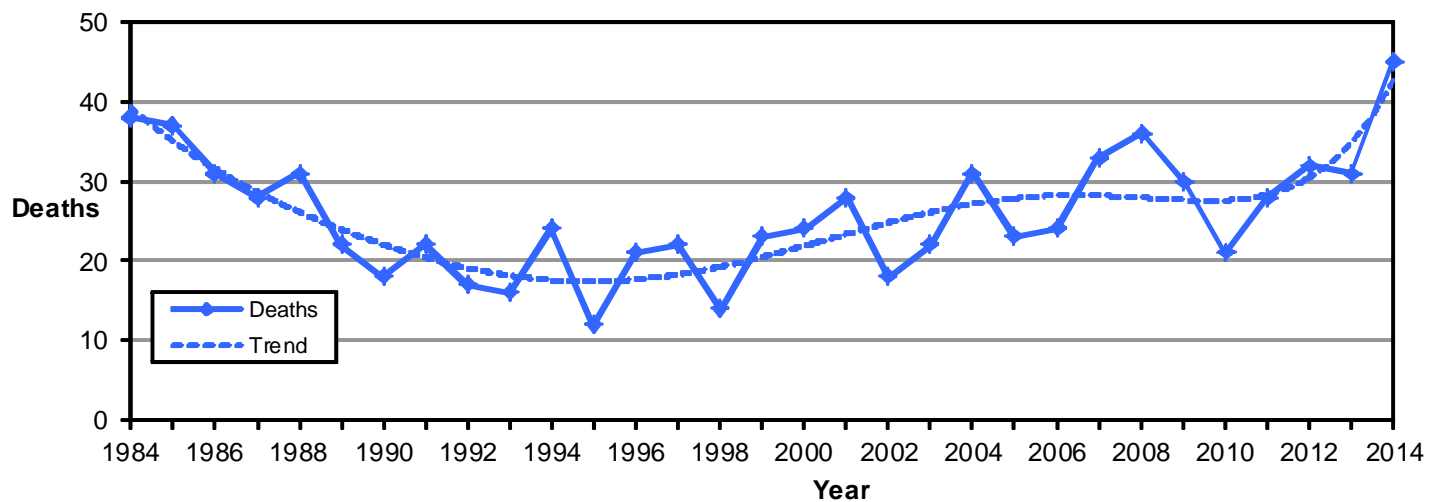
## Motorcycles



### Did you know in 2014:

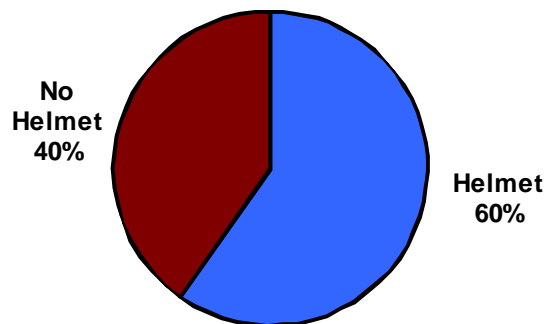
- There were 1,179 motorcycle crashes in Utah, resulting in 1,043 injured motorcyclists and 45 motorcyclist deaths.
- Motorcyclists accounted for 1% of persons in crashes and 18% of deaths.
- Motorcycle crashes were 11.8 times more likely to result in a death than other crashes.

### Motorcyclist Deaths (Utah 1984-2014)



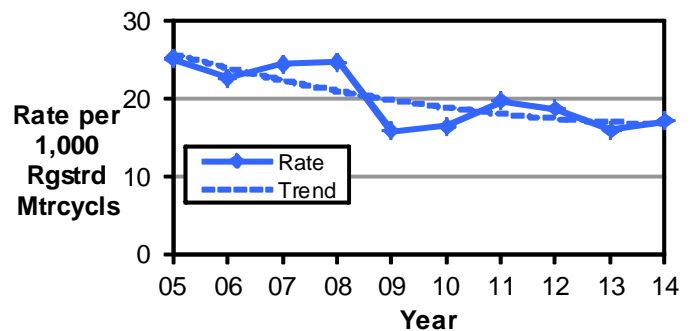
- Motorcyclist deaths have been on the rise since the 1990s.
- The 45 motorcyclist deaths in 2014 were the highest total on record in Utah.

### Helmet Use of Motorcyclists in Crashes (Utah 2014)



- Only 60% of motorcyclists wore a helmet.
- Utah law requires anyone under the age of 18 years riding a motorcycle to wear a helmet.

### Motorcyclist Crash Rates per Registered Motorcycles (Utah 2005-2014)



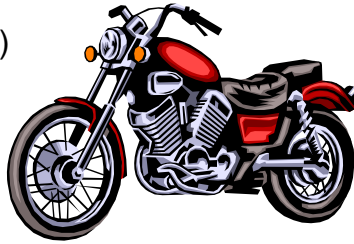
- The rate of motorcyclists in crashes per registered motorcycles decreased 32% from 2005.

# Motorcycles



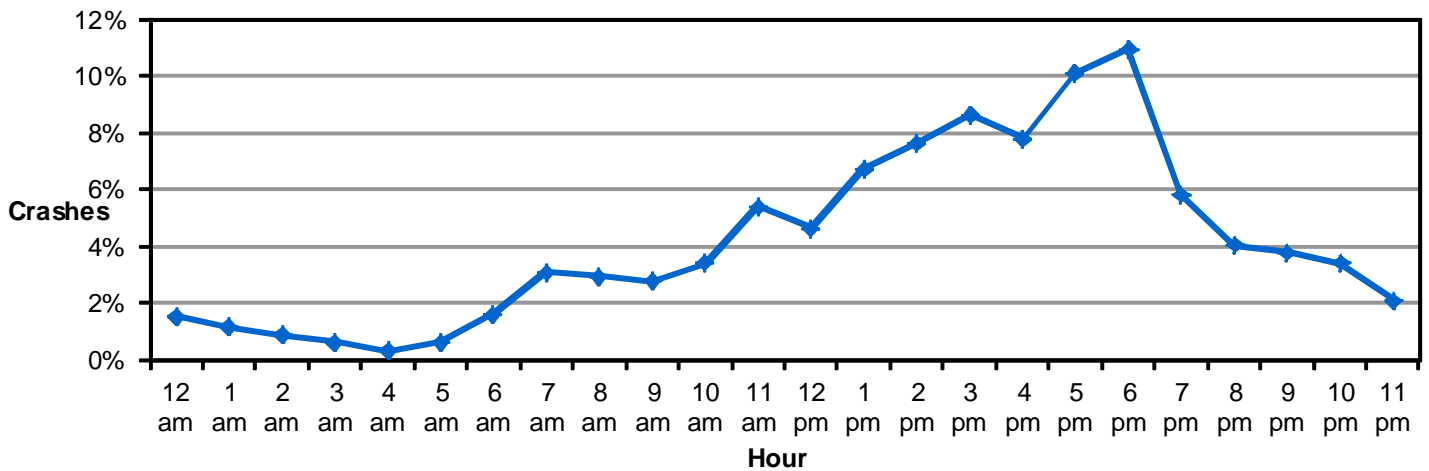
## Leading Motorcyclist Contributing Factors in Crashes (Utah 2014)

1. Speed Too Fast (10%)
2. Failed to Keep in Proper Lane (10%)
3. Followed Too Closely (9%)
4. Swerved or Evasive Action (5%)
5. Ran Off Road (5%)



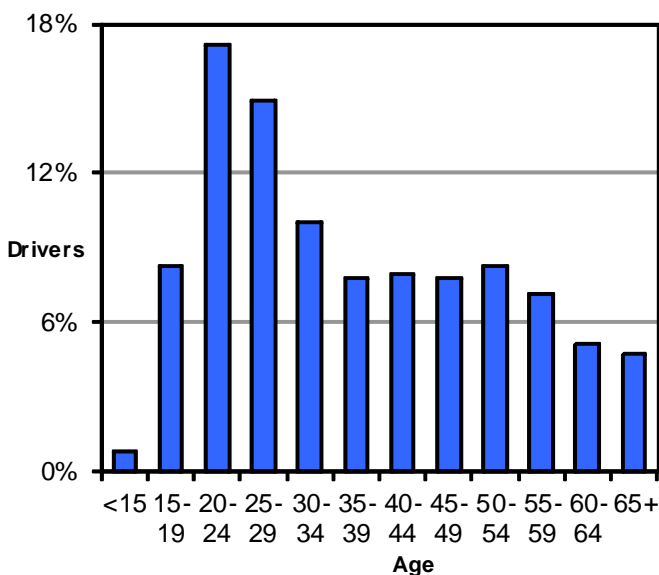
**Left Turns**  
 Nearly one-third (29%) of drivers who hit motorcycles were turning left. Drivers need to watch for motorcycles before turning.

## Motorcyclists In Crashes by Hour of Day (Utah 2014)



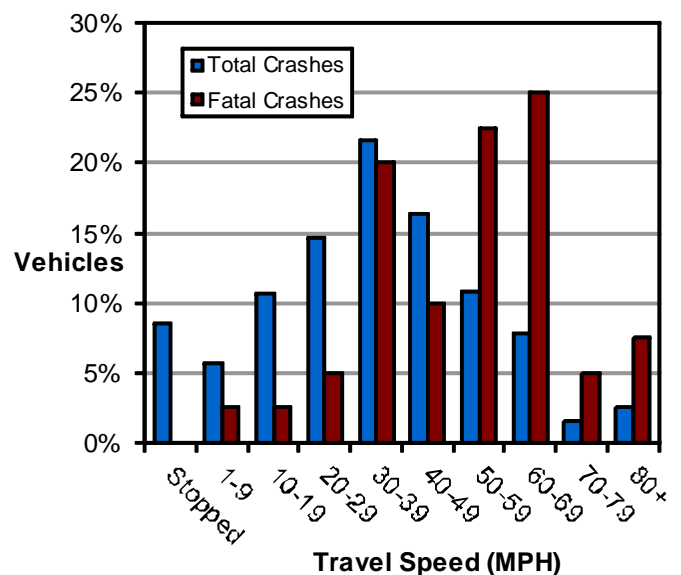
- Over one-half (52%) of motorcycle crashes occurred between 1:00 p.m. and 6:59 p.m.

## Age of Motorcycle Drivers in All Crashes (Utah 2014)



- Over one-half (51%) of motorcycle drivers in crashes were under the age of 35 years.

## Travel Speed of Motorcycles in Crashes (Utah 2014)



- 50 MPH or higher is when the travel speed of motorcycles becomes increasingly deadly.