

Call of the Canyon

Winter Calendar of Events

VOLUME 12, ISSUE 3
DECEMBER 15, 2015

Sunset Hike

Explore the twilight sights and sounds of the canyon during a 1.5-mile, roundtrip hike.
Fri., 12/18, 4:30-6:00 p.m.

Moonlit Hike

Join park staff for a moonlit, two-mile hike. Enjoy the unique opportunity to see the canyon by moon-glow!
Sat., 12/26, 8:00-9:30 p.m.

First Day Hike

Start your New Year immersed in Snow Canyon's scenic red rock. Join us on a two-mile round trip hike to appreciate the beauty of the canyon and welcome in 2016!
Fri., 1/1, 9:00-10:30 a.m.

Lava Tube Hike

Join park staff for a two-mile, roundtrip hike and the chance to explore the unique formations of a lava tube!
Sat., 1/2, 1:00-2:30 p.m.

Winter Circle: Star Walk

Join us for a stroll under the stars and explore the 'Winter Circle'—a bright

pattern of stars adorning our chilly skies!
Fri., 1/8, 8:00-9:30 p.m.

Nature Sketching

Explore the fun of sketching nature and learn how to make a new connection with the canyon.
Sat., 1/16, 1:00-2:30 p.m.

Moonlit Hike

Join park staff for a moonlit, two-mile hike. Enjoy the unique opportunity to see the canyon by moon-glow!
Fri., 1/22, 7:00-8:30 p.m.
Sat., 1/23, 7:30-9:00 p.m.

Raven Intelligence

Did you know Ravens are one of the most intelligent birds worldwide? Come and learn more about the remarkable feats of this feathered Einstein.
Sat., 1/30, 1:00-2:00 pm

Sunset Hike

Explore the twilight sights and sounds of the canyon during a 1.5-mile, roundtrip hike.
Fri., 2/5, 5:30-7:00p.m.

Moonlit Hike

Join park staff for a moonlit, two-mile hike. Enjoy the unique opportunity to see the canyon by moon-glow!
Fri., 2/19, 6:30-8:00 p.m.
Sat., 2/20, 6:45-8:15 p.m.

Nature Sketching

Explore the fun of sketching nature and learn how to make a new connection with the canyon.
Sat., 2/27, 1:00-2:30 p.m.

The North Star: Star Walk

Join park staff for a one-mile, round trip hike and the opportunity to learn more about our north star and its nearest constellations.
Fri, 3/4, 7:00-8:30 pm

All listed events are free and open to the public. Space is limited; registration required. Program registration is held two days preceding the scheduled event.

Register by phone or in person. For more information or to register for a program contact park staff at (435) 628-2255.

Check out the Park's Bookstore for your holiday shopping!

We have hats, shirts, magnets, books, pottery and more...

And lots of great gifts for under \$10!

Snow Canyon State Park

1002 Snow Canyon Drive
Ivins, UT 84738

Phone: (435) 628-2255
Fax: (435) 628-9321
Email: snowcanyon@utah.gov
Web: www.stateparks.utah.gov

Utah State Parks:

Providing opportunities to enhance the quality of life by preserving natural, cultural, and recreational resources for the enjoyment, education, and inspiration of this and future generations.

“In every outthrust headland, in every curving beach, in every grain of sand there is the story of the earth”.

— Rachel Carson

Our Living Dunes

Despite their seemingly static and lifeless façade, Snow Canyon’s sand dunes are anything but! These “living dunes” are on the move, their delicate shifts revealed through patient study. Whether on the backs of gentle breezes or forceful winds, they stealthily inch their way—as though alive with intent—across the canyon floor.

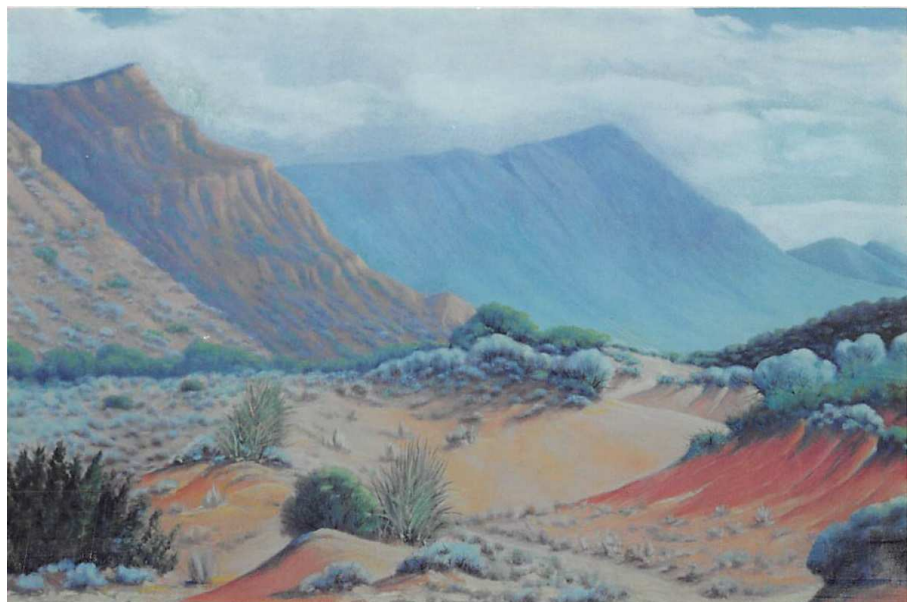


- *Dunes*, photograph by Rick Fridell

The sands that make up the subtle rise and fall, and morphing forms of the dunes, are comprised of fine grained quartz, weathered from the surrounding Navajo Sandstone. Wind causes the quartz grains to accumulate in thin sheets and irregular mounds that tend to migrate downwind. Many dunes begin where an obstacle, such as a large rock or clump of vegetation exists. As sand is blown up or around the obstruction, its velocity is reduced and deposition occurs—the trapped quartz stopped from its travel. Once a small dune is formed, it acts as a barrier itself, disrupting the flow of air and causing continued deposition. As sand begins to pile up, ripples and dunes can form. Some dunes in Snow Canyon are up to 50 feet thick.

Dunes migrate, grain by grain, as wind transports sand up the slope of the dune only to tumble down and collect in the protected downwind face. As the quartz sands build up, they produce a series of layers (cross beds) inclined—or leaning—in the downwind direction. Always on the move, these ever-changing dunes continue their slow creep down the canyon (guided by prevailing winds) in their strange and marvelous forms.

If you are fortunate to enjoy the beauty of our restless sands, especially its appeal to bare feet (both young and old are hard pressed to resist the feel of sand between their toes!) please remember to respect this fragile environment. ‘Take out what you take in’ so that everyone can fully enjoy their experience with “Our Living Dunes.”



- *Evening on Dixie Dunes*, 1958 oil by S. Ralph Huntsman
Courtesy of the Gentry Family Collection