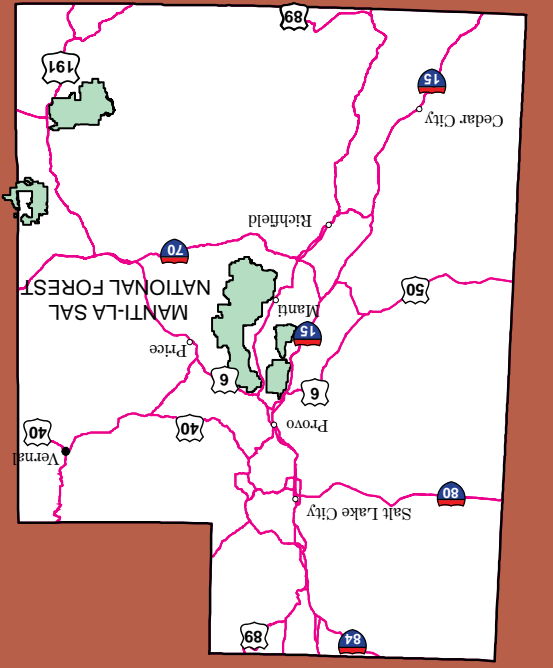
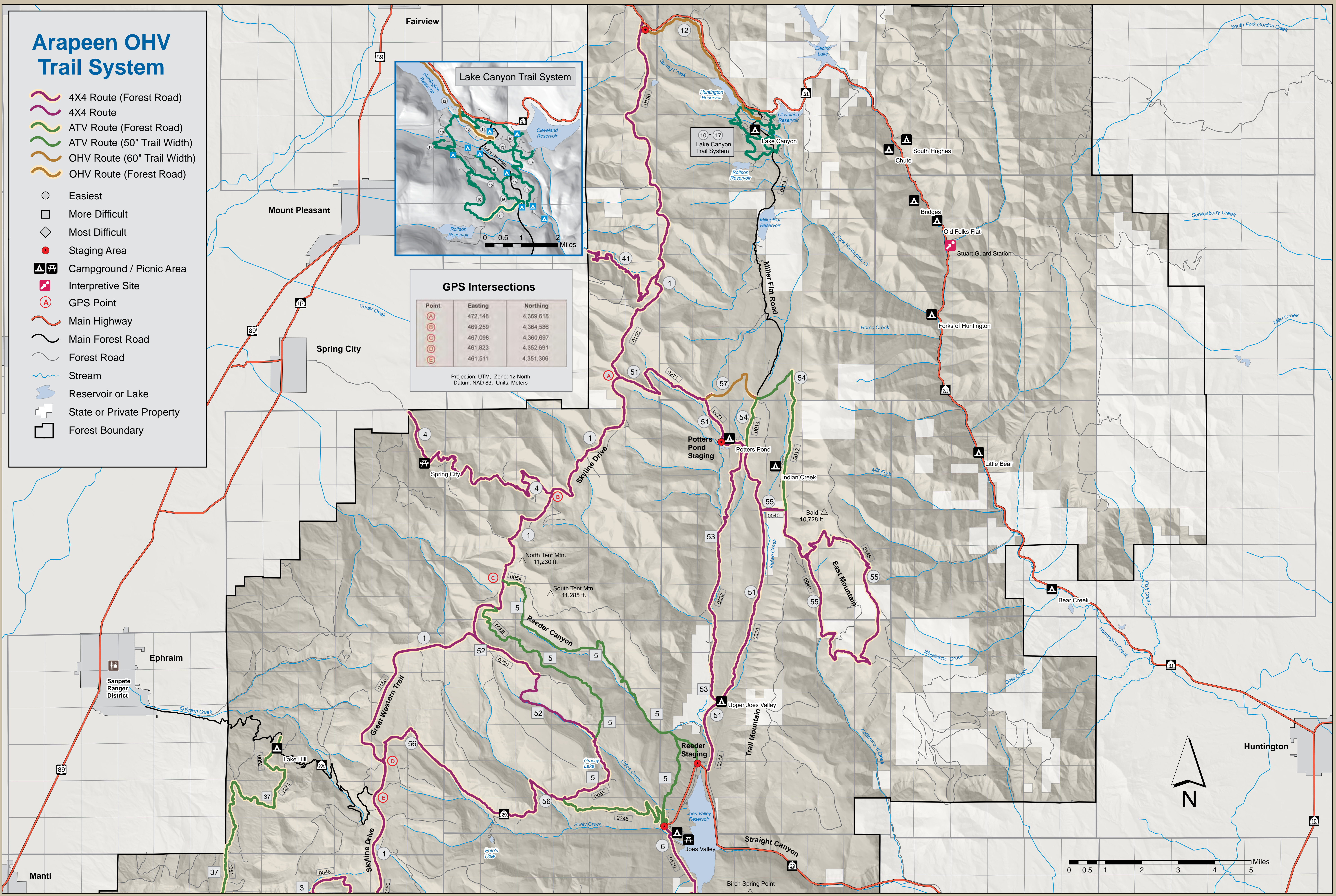


DEGREE OF DIFFICULTY
Ratings are assigned to trails under ideal conditions and are based on difficulty compared to other trails in the area. A trail rated easiest by Arapeen OHV Trail System standards could possibly be rated more or even most difficult elsewhere. Trail conditions are always subject to change due to the weather and other acts of nature.

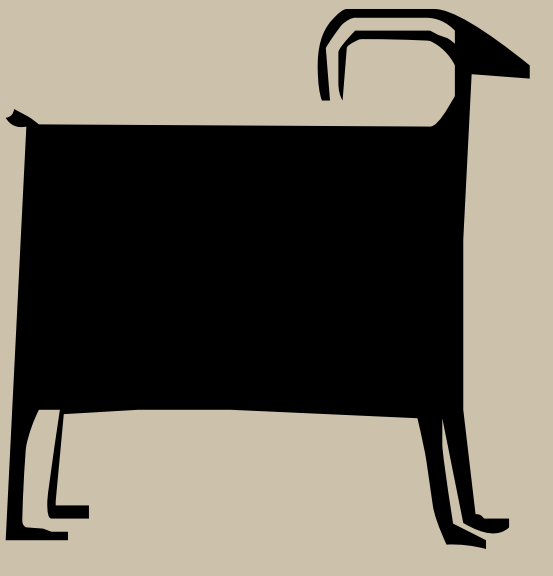


Motor Vehicle Use Map
www.fs.usda.gov/main/mantilasal/maps-pubs

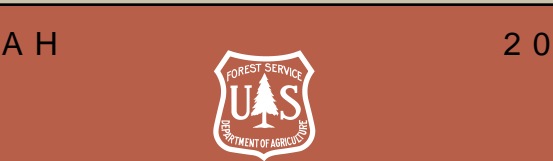
The U.S. Department of Agriculture (USDA) prohibits discrimination in all its programs and activities on the basis of race, color, sex, religion, age, disability, or ethnicity. All individuals who are entitled to benefits under the USDA programs and activities shall be treated equally regardless of race, color, sex, religion, age, disability, or ethnicity. (USDA is an Equal Opportunity Provider and Employer.)



Manti-La Sal National Forest



Arapeen OHV Trail System



NOT FOR SALE

The Arapeen Trail Council reminds you that it is a privilege to use this trail system. By observing the following guidelines you can continue to enjoy this unique trail system:

- A**cquire a map and travel only where permitted. Resist the urge to pioneer a new trail.
- R**espect property. Leave gates as you found them. Obey closure and trail signs.
- A**void running over vegetation, including young trees, shrubs and grasses.
- P**lease use your head. Wear a helmet and other protective gear. Stupid hurts!
- E**liminate trash. If you pack it in-pack it out.
- E**arn other users respect. Motorized users should yield to non-motorized users.
- N**ever harass wildlife or livestock.

Tread lightly! Leave no trace that you were there.

Respect the land by staying off trails during spring runoff or heavy rains.

Always plan ahead. Know your equipment, abilities, and current conditions.

If you enjoy the trail, contribute to its maintenance and upkeep.

Leave the land better than you found it.

RIGHT RIDER ETIQUETTE

The future of this trail system depends on YOU! Protect your privilege to ride. Respect the land, the wildlife, and the rights of others. Ride Responsibly!

- **Be Legal.** Most Arapeen OHV trails are open to vehicles 50 inches or less in width. Some trails are open to vehicles 60 inches or less in width. Know the width of your machine. The Forest's Motor Vehicle Use Map (MVUM) regulates all motorized vehicle travel and is available for reference.

- **Educate Yourself And Your Family.** It's your responsibility to know Utah's laws governing OHV operation on public lands. Are your children wearing helmets if under 18? Do they have a Utah OHV certificate if between 8 and 15 years old? Do you know where your children are riding?

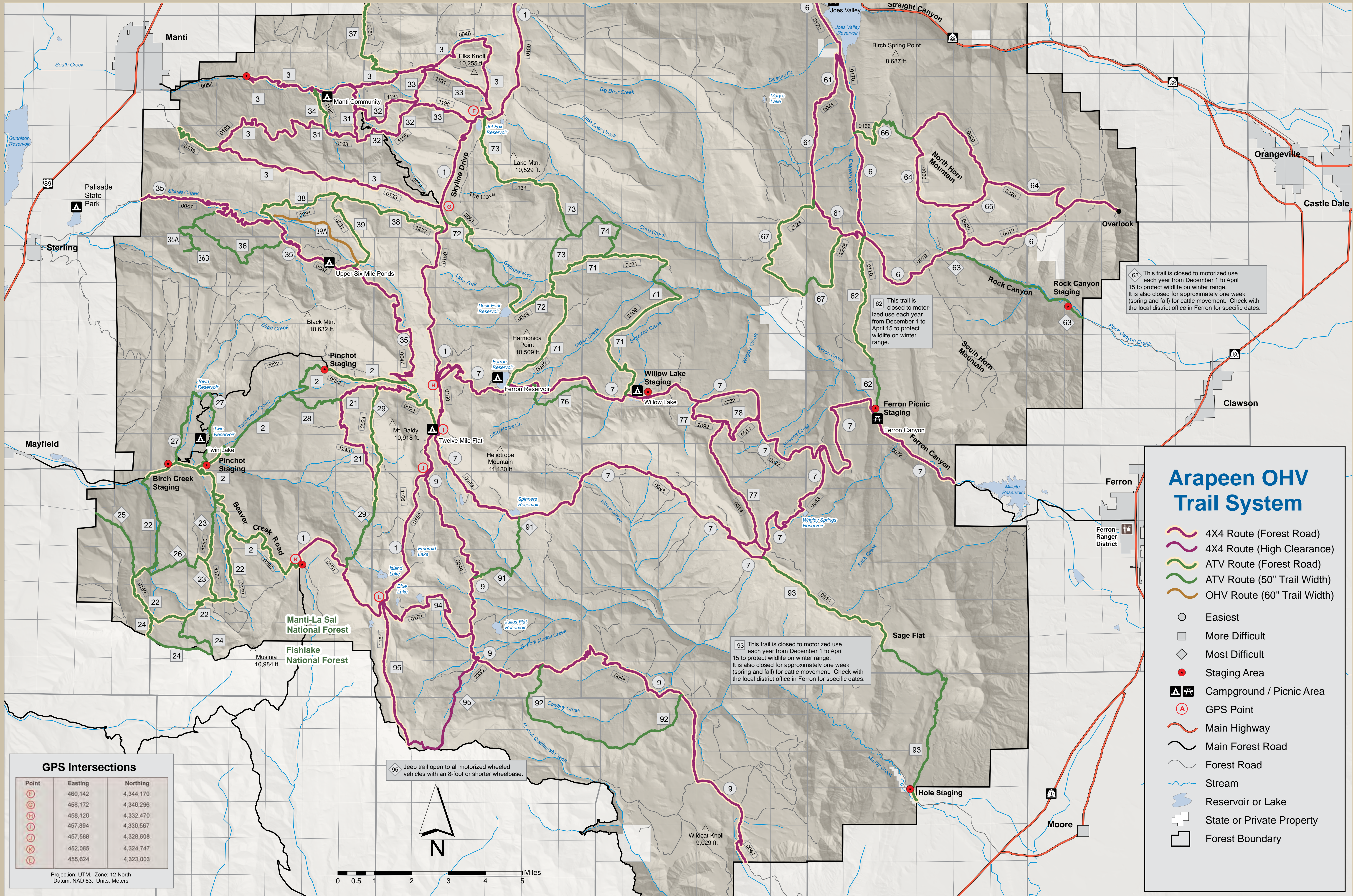
- **Use Open Routes Only.** Open routes are signed on the ground. If a route is not signed it is safe to assume it is user created and illegal.

- **Leave No Trace.** Stay off trails when your use will leave ruts and impact the trail tread, such as during spring runoff or other wet conditions. Cutting doughnuts in the roads or other unsafe riding annoys other forest visitors and makes all OHVers look bad.

- **Always Yield To Other Users.** Show respect when meeting others by slowing down or stopping altogether. Use hand signals to indicate the number of riders behind you. All trails are two way unless otherwise posted; anticipate that others may be around the corner. Even brief inattention can cause disaster for you or others. Excessive speed threatens everyone.

- **Never Spook Livestock or Wildlife.** All animals are startled by an unannounced approach, a sudden movement, or a loud noise. Give animals extra room and time to adjust to you. Pull to the side of the trail and stop when encountering horseback riders. Remove your helmet, kill your engine, and talk to the riders. Do not assume that cattle or sheep will move off the trail or continue in their current direction. Approach and pass them very slowly.

- **Educate Others.** Those who break the rules and don't ride right are threatening YOUR riding opportunities. We need your help. Talk to them and educate them. They will listen to you as a fellow rider.



GPS Intersections

Point	Easting	Northing
F	460,142	4,344,170
G	458,172	4,340,296
H	458,120	4,332,470
I	457,894	4,330,567
J	457,588	4,328,608
K	452,085	4,324,747
L	455,624	4,323,003

Projection: UTM, Zone: 12 North
Datum: NAD 83, Units: Meters

63 This trail is closed to motorized use each year from December 1 to April 15 to protect wildlife on winter range. It is also closed for approximately one week (spring and fall) for cattle movement. Check with the local district office in Ferron for specific dates.

62 This trail is closed to motorized use each year from December 1 to April 15 to protect wildlife on winter range.

93 This trail is closed to motorized use each year from December 1 to April 15 to protect wildlife on winter range. It is also closed for approximately one week (spring and fall) for cattle movement. Check with the local district office in Ferron for specific dates.

95 Jeep trail open to all motorized wheeled vehicles with an 8-foot or shorter wheelbase.

