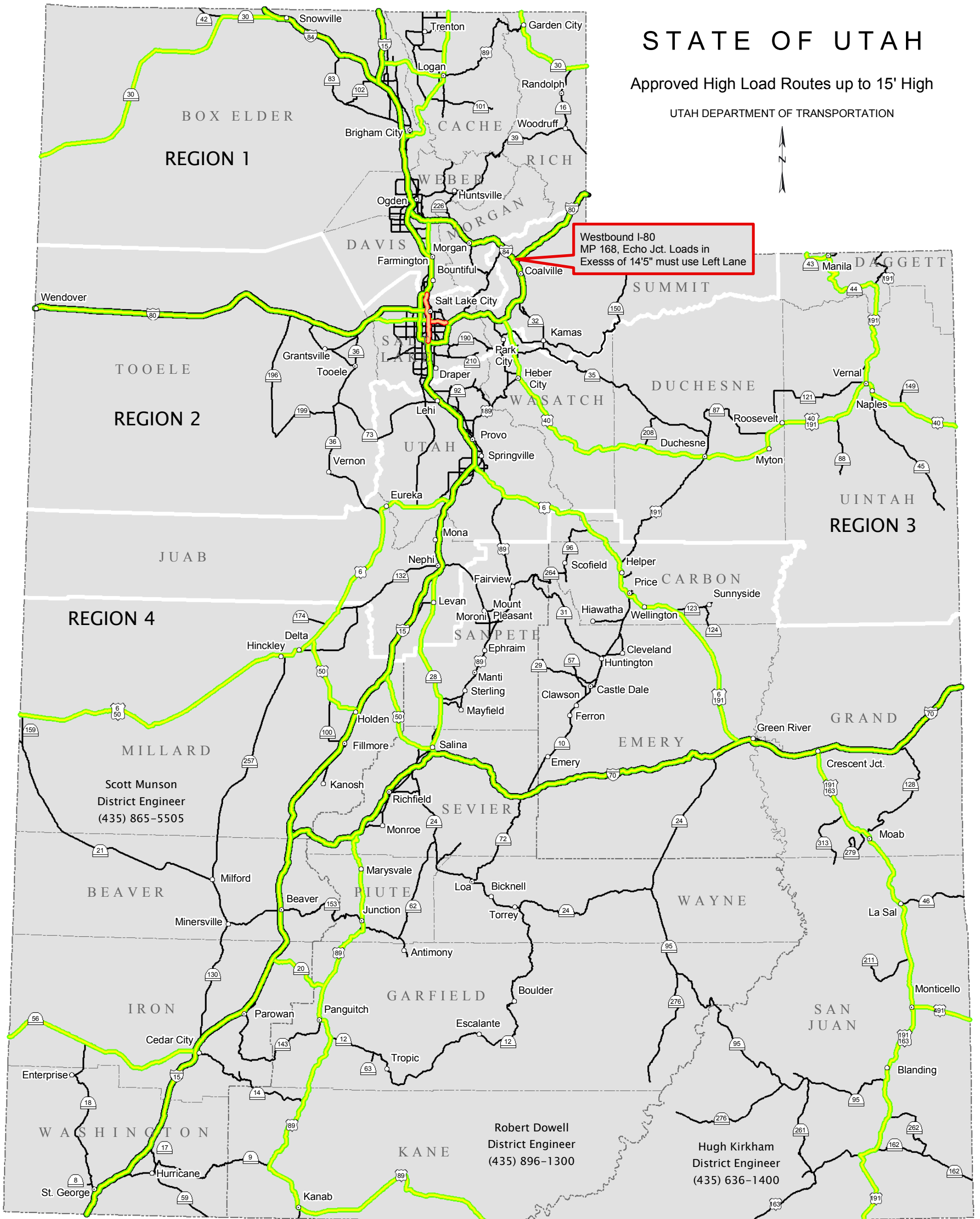
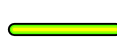



STATE OF UTAH

Approved High Load Routes up to 15' High

UTAH DEPARTMENT OF TRANSPORTATION



-  Route is Okay
-  No Travel Zone Unless Approved

* All Loads in excess of 14' High Require a Single Trip Permit with approved Routing.

* Off Route Approval Contact Superload Coordination Team (801)707-1027