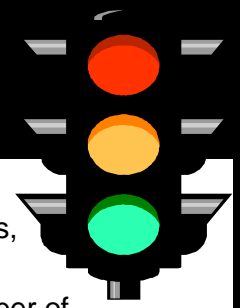


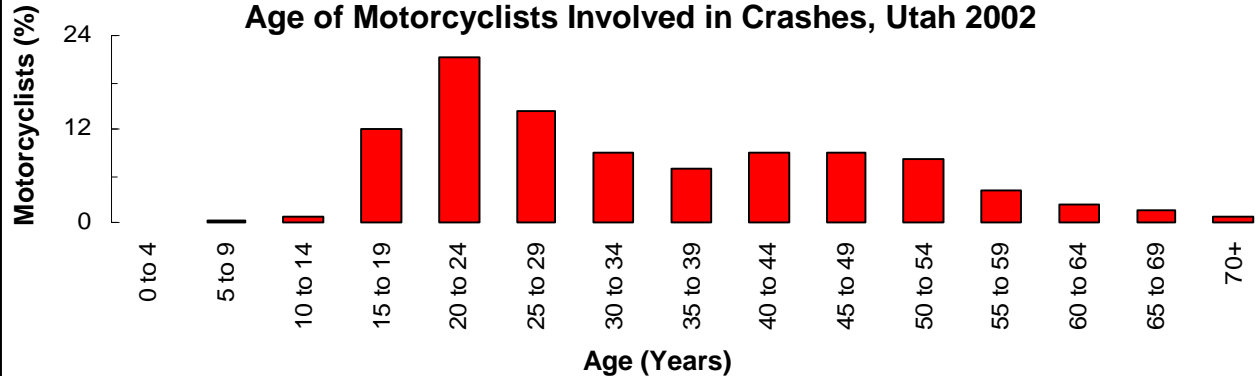
MOTORCYCLES



Did you know that in 2002. . .

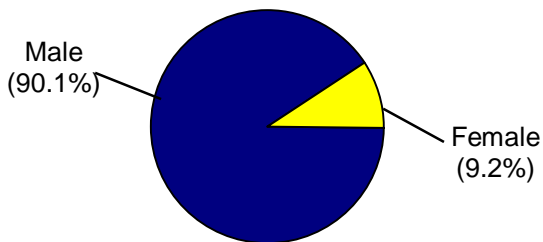
- There were 789 total motorcycle crashes in Utah, 689 motorcycle injury crashes, and 19 fatal motorcycle crashes.
- The number of total motorcycle crashes increased 4% from 2001, and the number of motorcycle injury crashes increased 6%.
- Nearly all of the motorcycle crashes resulted in an injury (89.7%) compared to 37.2% of all motor vehicle crashes.
- Fatalities were 9.5 times higher for motorcyclists than for other motor vehicle crash participants.

Age of Motorcyclists Involved in Crashes, Utah 2002



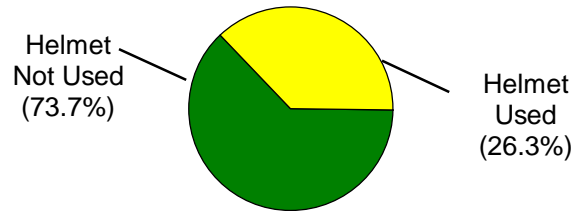
- Almost half (48.5%) of the motorcyclists involved in crashes were under the age of 30 years.
- Motorcyclists aged 20 to 24 years were involved in the highest percentage of crashes.
- Motorcycle crash fatalities occurred most often in the 40 to 49 year age group.

Gender of Motorcyclists Involved in Crashes, Utah 2002



- Most motorcyclists involved in crashes were male (90.1%).
- The high percentage of male motorcyclists involved in crashes does not necessarily indicate that male motorcyclists are at greater risk for a crash, but may reflect the higher proportion of motorcycle users who are male.

Helmet Use of Motorcyclists Killed in a Crash, Utah 2002



- The majority of the motorcyclists killed in a crash were not wearing a helmet (73.7%).
- Overall, only 37.4% of motorcycle drivers and passengers involved in crashes wore a helmet.
- Utah law states that anyone under the age of 18 years riding a motorcycle either as the driver or as a passenger must wear a helmet approved by the Department of Public Safety.

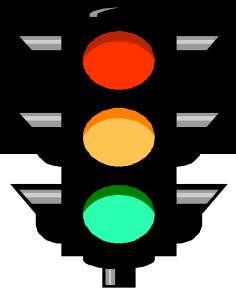
Leading Motorcycle Crash Violations, Utah 2002

1. Failure to Yield Right of Way (22.6%)
2. Other Non-Moving Violations (16.2%)
3. Improper Lookout (12.9%)
4. All Other Moving Violations (11.2%)
5. Driving under the influence (7.2%)

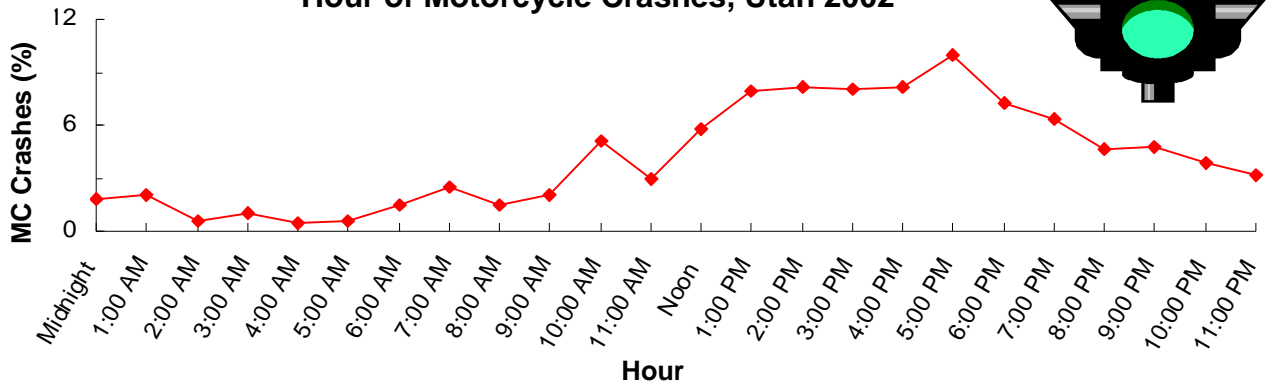


Over one-half (57.1%) of the motorcycle drivers involved in crashes received a citation.

MOTORCYCLES

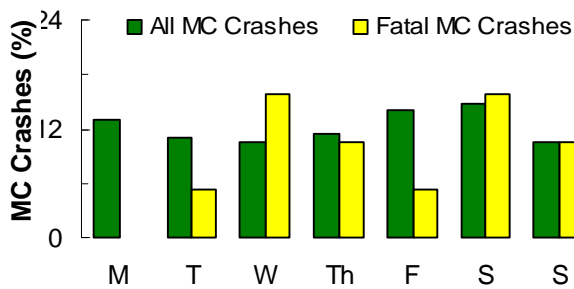


Hour of Motorcycle Crashes, Utah 2002



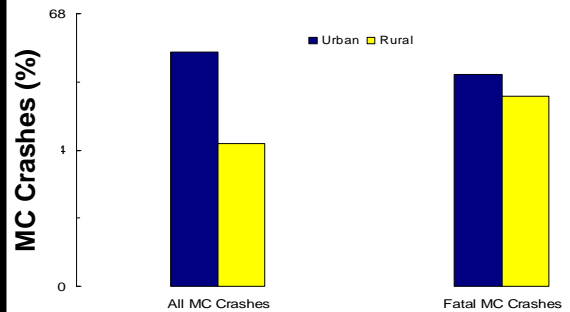
- The highest percentage of motorcycle crashes occurred between 1 pm and 6 pm.

Motorcycle Crashes by Day of Week, Utah 2002



- Over one third (42.1%) of all motorcycle crashes occurred on Friday, Saturday, and Monday.
- Fatal motorcycle crashes occurred most frequently on Wednesday and Saturday.
- Motorcycle crashes occurring on these days were almost 2 times more likely to be fatal than motorcycle crashes occurring on other days.

Urban/Rural Location of Motorcycle Crashes, Utah 2002



- The majority of all motorcycle crashes (58.5%) occurred in urban areas.
- The largest percentage of fatal motorcycle crashes (47.4%) occurred in both large urban and rural areas.
- Motorcycle crashes were almost 6 times more likely to result in a fatality than other crashes.



Leading Contributing Factors Involved in Motorcycle Crashes, Utah 2002

All Motorcycle Crashes

1. Improper Lookout (24.9%)
2. Failed to Yield the Right of Way (14.2%)
3. Following too closely (12.6%)
4. Speed Too Fast (9.1%)
5. Other Improper Driving (8.1%)
6. Hit and Run (4.2%)

Fatal Motorcycle Crashes

1. Following Too Closely (23.5%)
2. Other Improper Driving (17.6%)
3. Improper Lookout (11.8%)
3. Failed to Yield the Right of Way (11.8%)
3. Speed Too Fast (11.8%)
3. Non-Contact Vehicle Involved (11.8%)

- Improper Lookout (24.9%) is one-fourth of the contributing factors involved in all motorcycle crashes.
- Following Too Closely accounted for 23.5% of the contributing factors involved in fatal motorcycle crashes.
- The contributing factors "driving under the influence," "had been drinking," and "under the influence of drugs" accounted for 3.7% of total motorcycle crashes and 0% of the motorcycle fatal crashes.