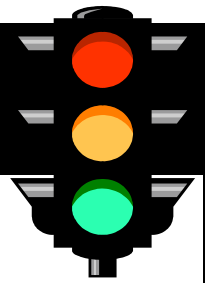


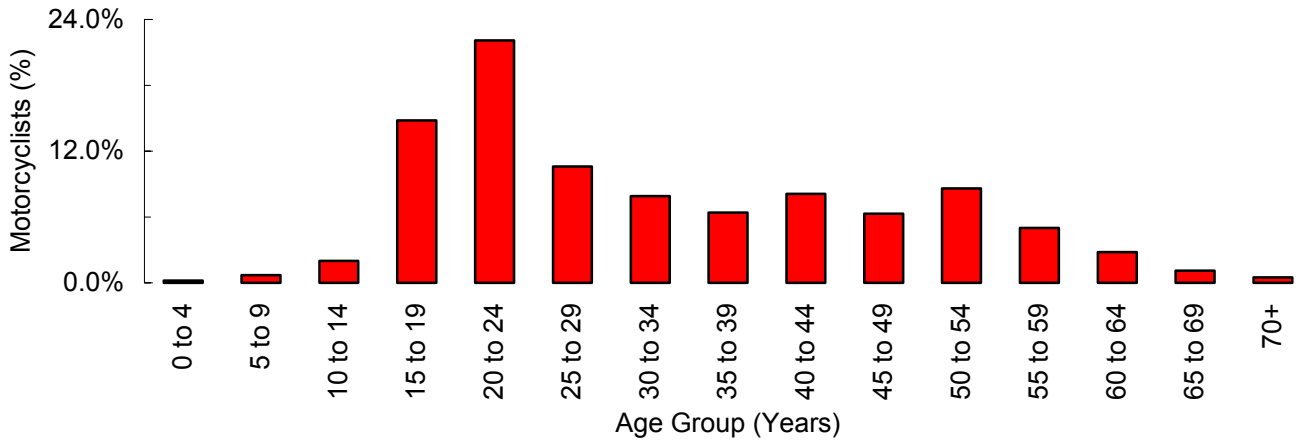
MOTORCYCLES



Did you know that in 2003. . .

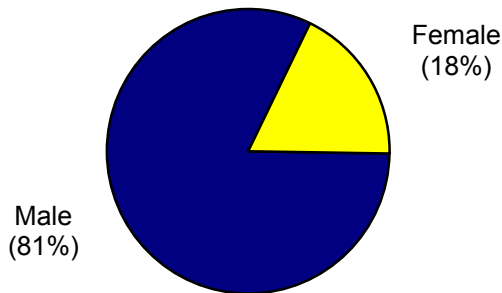
- There were 766 total motorcycle crashes in Utah, resulting in 730 injured persons and 22 fatalities.
- There was a 5.9% decrease from 2002 in the rate of total motorcycle crashes, and a 3.4% decrease from 2002 in the rate of motorcycle injury crashes.
- Nearly all of the motorcycle crashes resulted in an injury (86.2%) compared to 36.3% of all motor vehicle crashes.
- Fatalities were 12 times higher for motorcyclists than for other motor vehicle crash occupants.

Age of Motorcyclists (Driver and Passenger) Involved in Crashes, Utah 2003



- Over one-half (50.4%) of the motorcyclists involved in crashes were under the age of 30 years.
- Motorcyclists aged 20 to 24 years were involved in the highest percentage of crashes (22.1%).

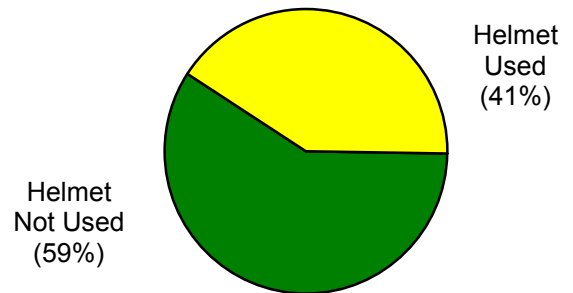
Gender of Motorcyclists Involved in Crashes, Utah 2003



NOTE: Gender was missing for 1% of motorcyclists.

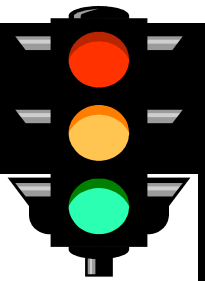
- Most motorcyclists involved in crashes were male (81%).
- The high percentage of male motorcyclists involved in crashes does not necessarily indicate that male motorcyclists are at greater risk for a crash, but may reflect the higher proportion of motorcycle users who are male.

Helmet Use of Motorcyclists Killed in a Crash, Utah 2003

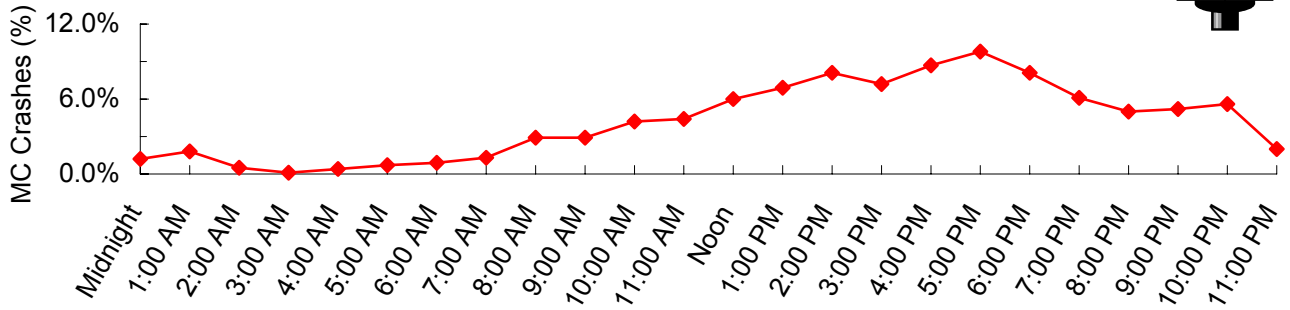


- The majority of the motorcyclists killed in a crash were not wearing a helmet (59%).
- Overall, only 35.4% of motorcycle drivers and passengers involved in crashes wore a helmet.
- Utah law states that anyone under the age of 18 years riding a motorcycle, either as the driver or as a passenger, must wear a helmet approved by the Department of Public Safety.

MOTORCYCLES

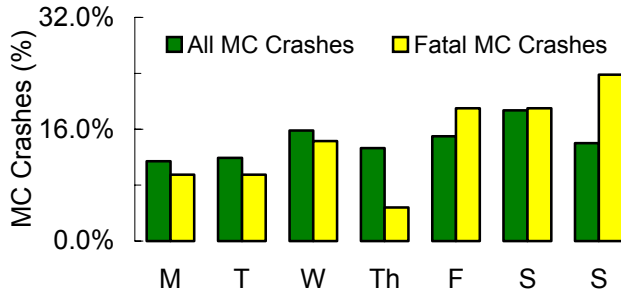


Time of Day Motorcycle Crashes Occurred, Utah 2003



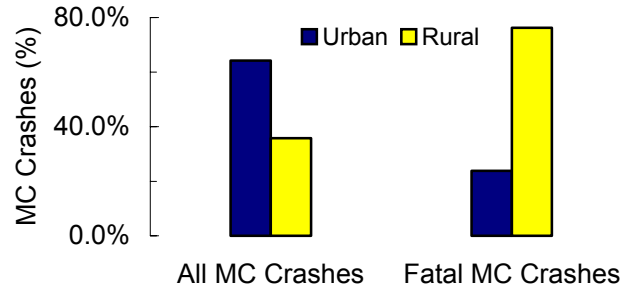
- The highest percentage of motorcycle crashes occurred between 2:00 pm and 6:00 pm.

Motorcycle Crashes by Day of Week, Utah 2003



- The highest percentage of all motorcycle crashes occurred on Saturday (18.7%).
- Fatal motorcycle crashes occurred most frequently on Sunday (23.8%).

Urban/Rural Location of Motorcycle Crashes, Utah 2003



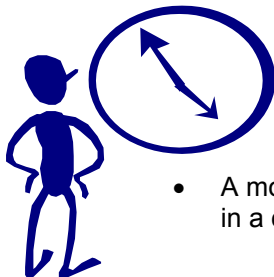
- The majority of all motorcycle crashes occurred in urban areas (64.2%).
- The largest percentage of fatal motorcycle crashes occurred in rural areas (76.2%).
- Motorcycle crashes in rural areas were 13 times more likely to result in a fatality than motorcycle crashes in urban areas.

Leading Motorcycle Crash Violations, Utah 2003

- Speeding (12.7%)
- Driving under the influence (9.6%)
- Following too close (7.6%)
- Reckless driving (7.1%)
- Improper lookout (5.6%)

Approximately one-quarter (25.3%) of the motorcycle drivers involved in crashes received a citation. However, no citations were given to motorcycle drivers involved in fatal crashes.

Motorcycle Crash Clock



- A motorcyclist was involved in a crash every 60 minutes.

Alcohol and Other Drug Involvement



- Of the 22 motorcycle drivers and motorcycle passengers killed in 2003, 1 motorcycle driver was impaired by alcohol or other drugs.