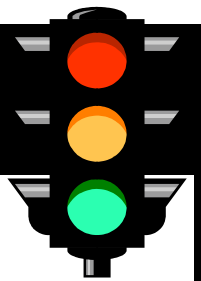


## PERSONS AND CRASHES

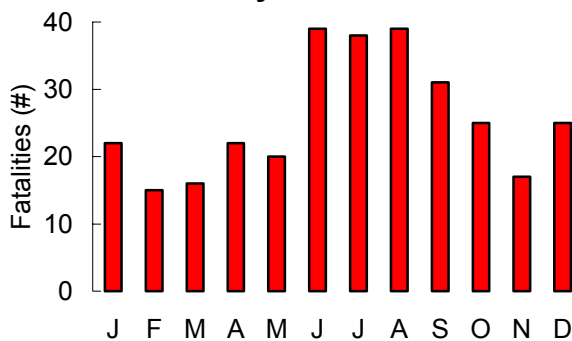


Motor vehicle crashes are the leading cause of death and disability for persons in the United States.

### Did you know that in 2003 . . .

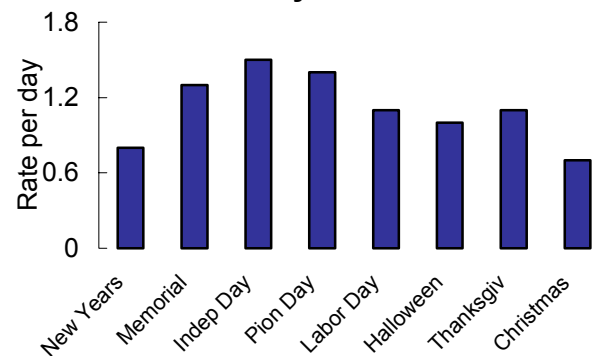
- 50,389 motor vehicle crashes occurred in Utah which resulted in 28,352 injured persons and 309 fatalities.
- Utah's total motor vehicle crash rate decreased 4% from 2002, the injury crash rate decreased 5%, and the fatal crash rate stayed the same.
- A motor vehicle crash occurred in Utah every 10 minutes, a person was injured in a crash every 19 minutes, and a person died in a crash every 28 hours.

### Fatalities by Month of the Year



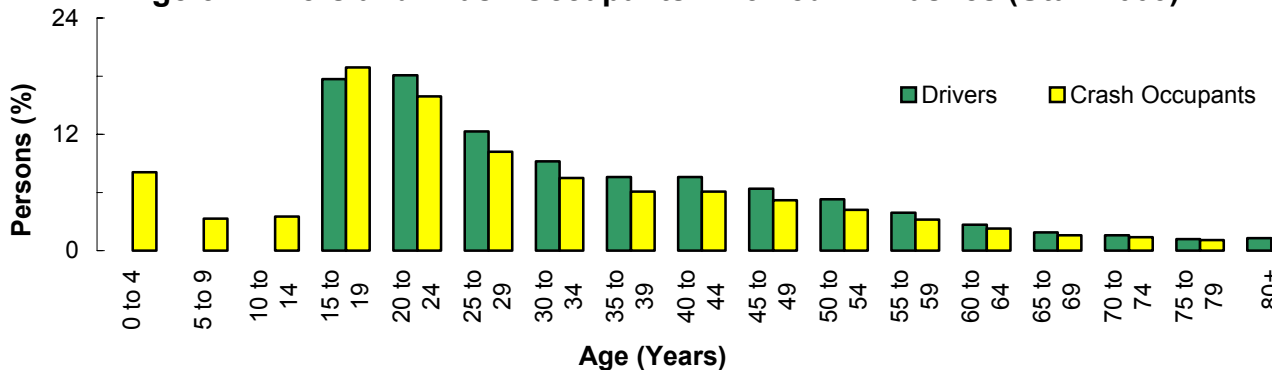
- Over one-third (38%) of the 2003 fatalities occurred during June, July and August.

### Holiday Fatalities



- In 2003, Labor Day had the highest rate of fatalities (1.8), while Thanksgiving had the lowest rate (0.4).

### Age of Drivers and Crash Occupants Involved in Crashes (Utah 2003)



- Drivers aged 20 to 24 years represented the largest percentage of drivers involved in crashes (18.1%).
- The largest proportion of crash occupants were aged 15 to 19 years (18.9%).

### Leading Collision Descriptions (Utah 2003)

#### All Crashes

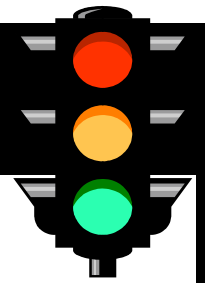
1. Rear End (30.0%)
2. Broadside (21.0%)
3. Side Swipe (6.2%)
4. Single Vehicle Rollover (5.8%)
5. Pedestrian/Bicyclist (2.4%)

#### Fatal Crashes

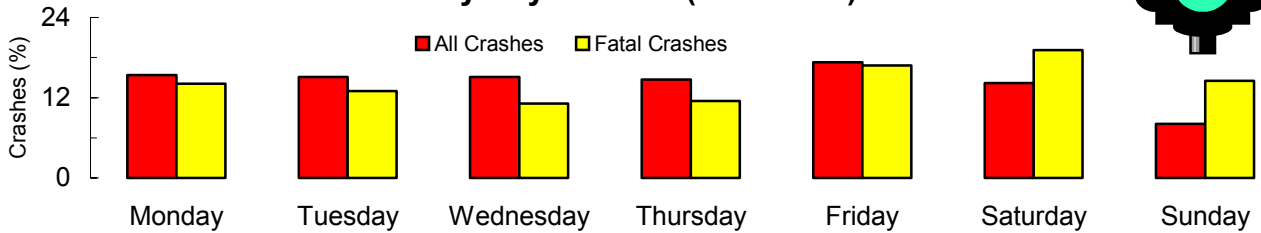
1. Single Vehicle Rollover (44.7%)
2. Head-On (14.5%)
3. Broadside (13.7%)
4. Pedestrian/Bicyclist (9.5%)
5. Side Swipe (7.3%)

Head-on collisions were 21 times more likely, and single vehicle rollovers were 14 times more likely to result in a fatality than other collisions.

## PERSONS AND CRASHES

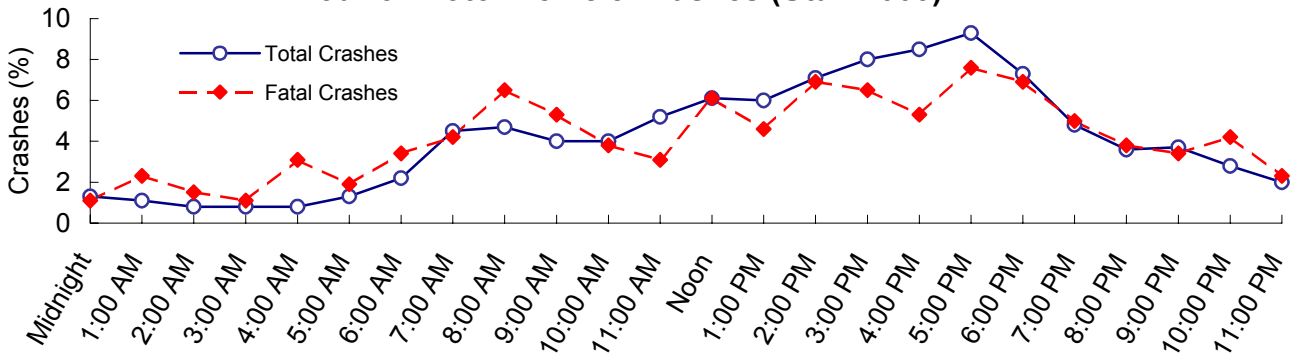


### Crashes by Day of Week (Utah 2003)



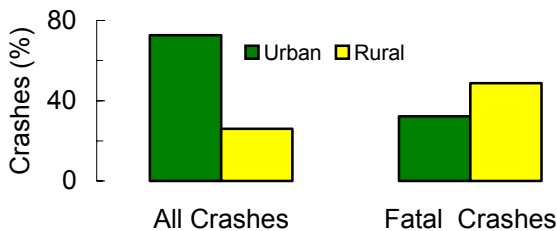
- The highest percentage of total crashes occurred on Friday (17.3%), while the highest percentage of fatal crashes occurred on Saturday (19.1%).
- Even though Sunday crashes represented 8.1% of total crashes, they accounted for 14.5% of fatal crashes. In fact, crashes occurring on Sunday were 1.9 times more likely to involve a fatality than crashes that occurred on other days of the week.

### Hour of Motor Vehicle Crashes (Utah 2003)



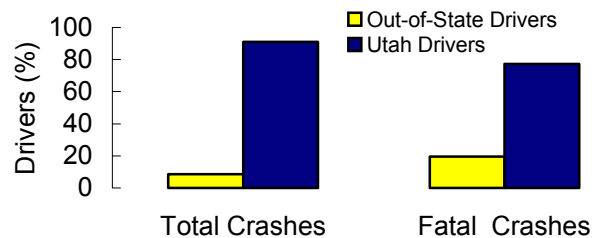
- Total crashes and fatal crashes followed a similar pattern where crashes were more likely to occur between 2:00 pm and 6:00 pm, with a peak at 5:00 pm (evening rush hour).

### Urban/Rural Location of Crashes



- While the majority of all crashes occurred in urban areas (73.7%), the majority of fatal crashes occurred in rural areas (66.8%).
- In fact, rural crashes were 6 times more likely to be fatal than urban crashes.

### Out-Of-State Drivers (Utah 2003)



- While out-of-state licensed drivers accounted for 8.6% of drivers involved in crashes, they represented 19.6% of drivers involved in fatal crashes.

### Leading Violations (Utah 2003)

#### All Crashes

1. Failure to Yield Right-of-Way (18.0%)
2. Improper Lookout (17.9%)
3. Following Too Close (16.2%)

#### Fatal Crashes

1. Vehicular Homicide (23.5%)
2. All Other Moving Violations (17.6%)
3. Driving Under the Influence (11.8%)

Officers at the scene cited 35.2% of drivers involved in a crash for a traffic violation. Drivers cited for driving under the influence were 3 times more likely to be involved in a fatal crash than drivers cited for other violations.