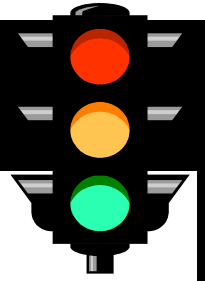


PERSONS AND CRASHES

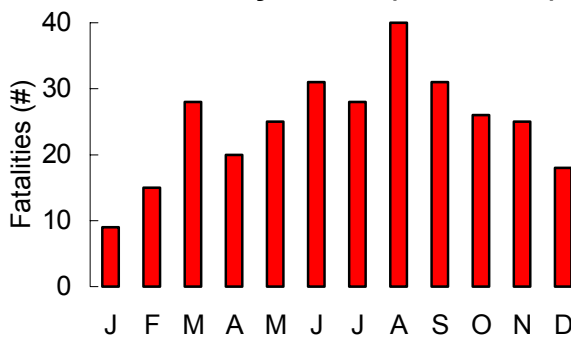


Motor vehicle crashes are the leading cause of death and disability for persons in the United States.

Did you know that in 2004 . . .

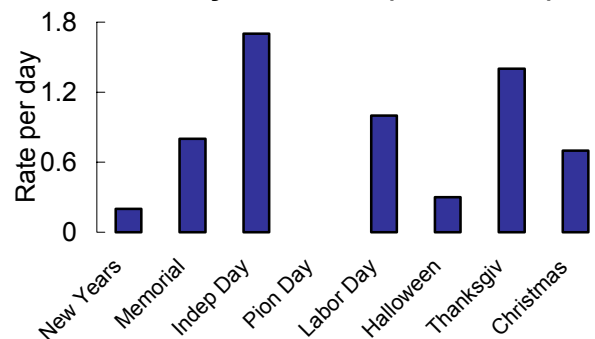
- 53,905 motor vehicle crashes occurred in Utah which resulted in 29,638 injured persons and 296 fatalities.
- Utah's total motor vehicle crash rate increased 4% from 2003, the injury crash rate increased 3%, and the fatal crash rate stayed the same.
- A motor vehicle crash occurred in Utah every 10 minutes, a person was injured in a crash every 18 minutes, and a person died in a crash every 30 hours.

Fatalities by Month (Utah 2004)



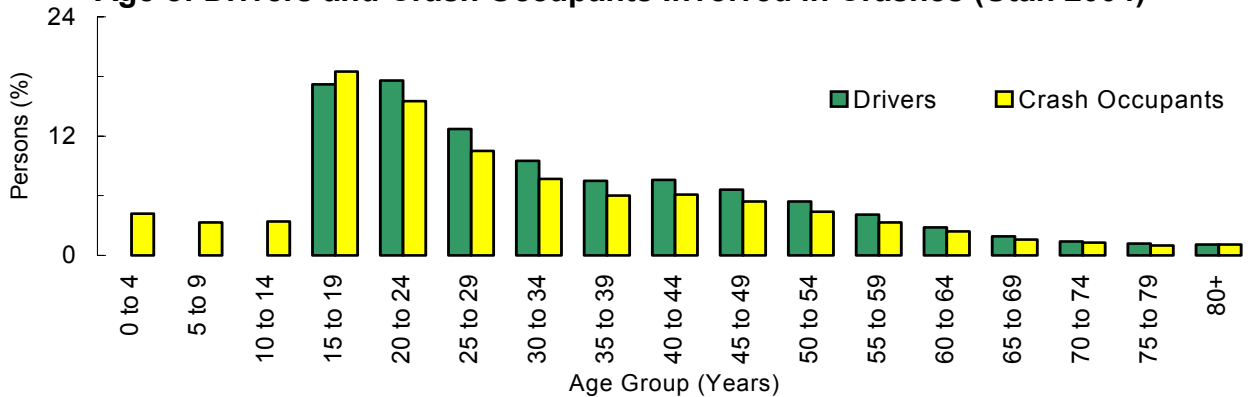
- The majority (44%) of 2004 fatalities occurred during June, July, August and September.

Holiday Fatalities (Utah 2004)



- In 2004, Independence Day had the highest rate of fatalities (1.7), while Pioneer Day had the lowest rate (0.0).

Age of Drivers and Crash Occupants Involved in Crashes (Utah 2004)



- Drivers aged 20 to 24 years represented the largest percentage of drivers involved in crashes (17.6%).
- The largest proportion of crash occupants were aged 15 to 19 years (18.5%).

Leading Collision Descriptions (Utah 2004)

All Crashes

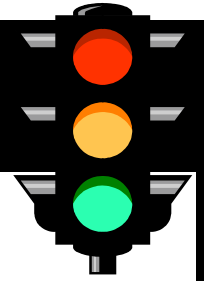
1. Rear End (30.2%)
2. Broadside (20.9%)
3. Side Swipe (6.5%)
4. Single Vehicle Rollover (6.0%)
5. Pedestrian/Bicyclist (2.4%)

Fatal Crashes

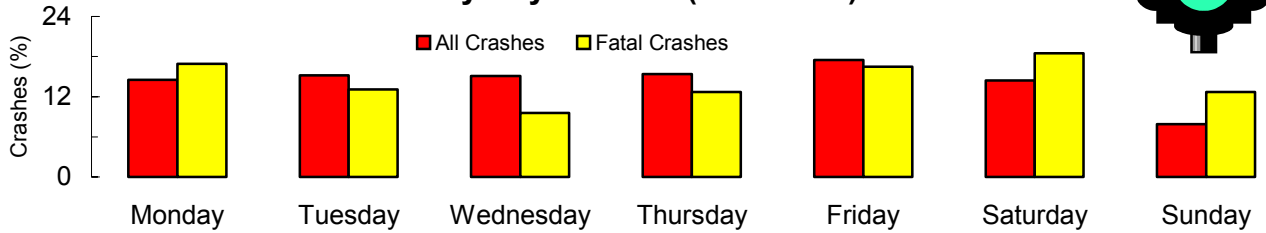
1. Single Vehicle Rollover (41.9%)
2. Head-On (14.2%)
3. Pedestrian/Bicyclist (10.8%)
4. Broadside (9.2%)
5. Side Swipe (6.9%)

Head-on collisions were 25 times more likely, and single vehicle rollovers were 12 times more likely to result in a fatality than other collisions.

PERSONS AND CRASHES

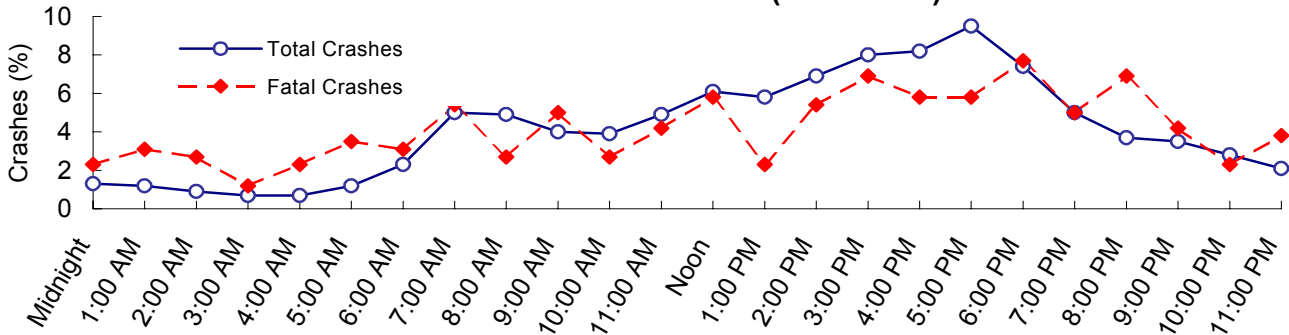


Crashes by Day of Week (Utah 2004)



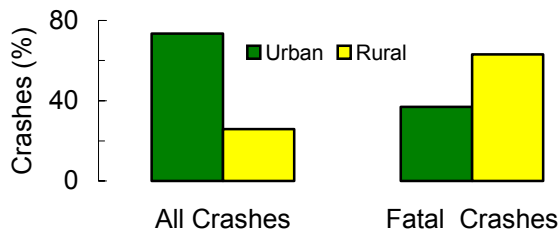
- The highest percentage of total crashes occurred on Friday (17.5%), while the highest percentage of fatal crashes occurred on Saturday (18.5%).
- Even though Sunday crashes represented 7.9% of total crashes, they accounted for 12.7% of fatal crashes. In fact, crashes occurring on Sunday were 1.7 times more likely to involve a fatality than crashes that occurred on other days of the week.

Hour of Motor Vehicle Crashes (Utah 2004)



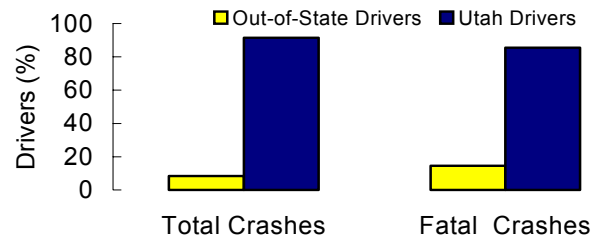
- Total crashes and fatal crashes were more likely to occur between 2:00 pm and 6:00 pm. However, total crashes peaked at 5:00 pm, and fatal crashes peaked at 6:00 pm.

Urban/Rural Location (Utah 2004)



- While the majority of all crashes occurred in urban areas (73.5%), the majority of fatal crashes occurred in rural areas (63.1%).
- In fact, rural crashes were 5 times more likely to be fatal than urban crashes.

Out-Of-State Drivers (Utah 2004)



- While out-of-state licensed drivers accounted for 8.3% of drivers involved in crashes, they represented 14.6% of drivers involved in fatal crashes.

Leading Violations (Utah 2004)

All Crashes

1. Following Too Close (17.5%)
2. Failure to Yield Right-of-Way (17.5%)
3. Improper Lookout (15.7%)

Fatal Crashes

1. Vehicle Homicide (23.3%)
2. Speeding (16.7%)
3. Driving Under the Influence (13.3%)

- Officers at the scene cited 34.4% of drivers involved in a crash for a traffic violation.
- Drivers cited for driving under the influence were 4 times more likely to be involved in a fatal crash than drivers cited for other violations.