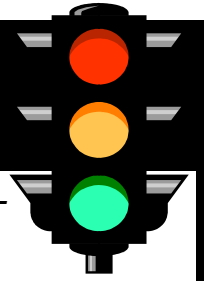


## OCCUPANT PROTECTION

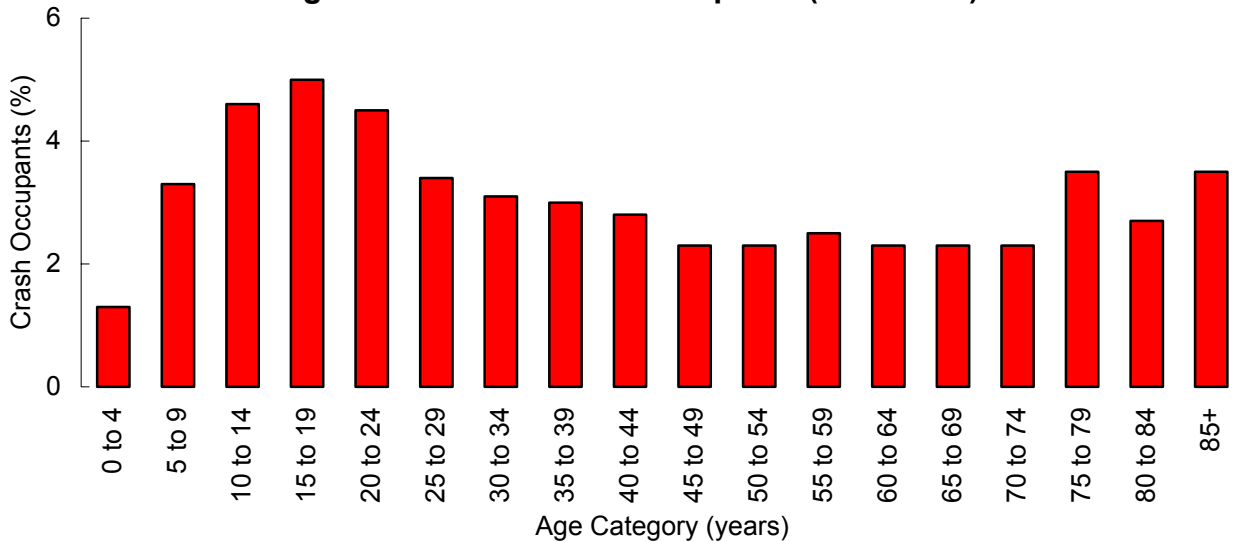


Failure to "buckle up" contributes to more fatalities than any other traffic-safety-related behavior.

### Did you know that in 2004 . . .

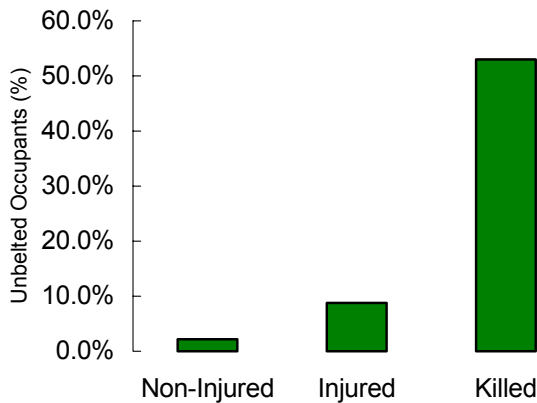
- Unbelted crash occupants were 31 times more likely to die in a crash than belted crash occupants.
- An unbelted crash occupant was killed in Utah every 2 days.

### Age of Unbelted Crash Occupants (Utah 2004)



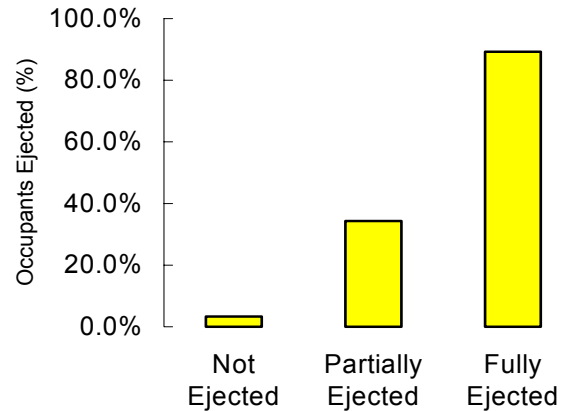
- The highest percentage of unbelted crash occupants were aged 15 to 19 years (5.0%)

### Injury Severity of Unbelted Occupants (Utah 2004)



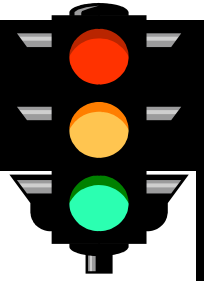
- The above graph shows that 53.0% of crash occupants killed in a crash were unbelted.
- The majority of persons who survived a crash reported wearing a seatbelt.

### Ejection and Seatbelt Use (Utah 2004)

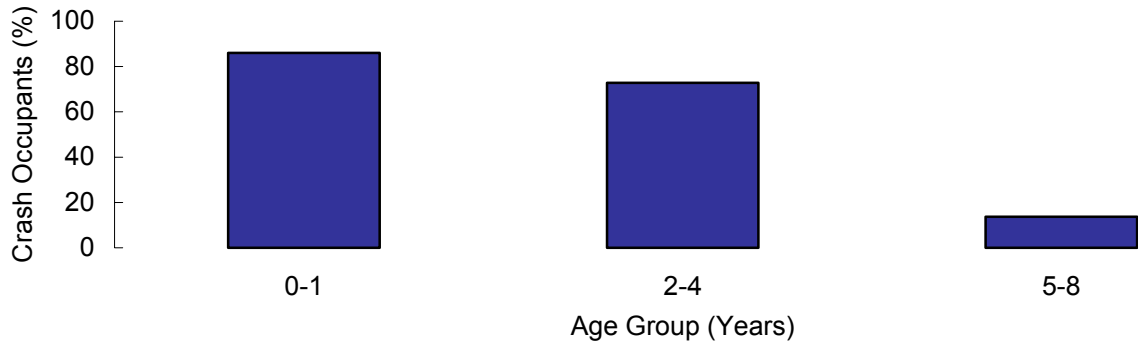


- The above graph shows that 89.2% of crash occupants fully ejected from a motor vehicle were unbelted. Only 3.3% of crash occupants not ejected from a motor vehicle were unbelted.

## OCCUPANT PROTECTION



**Percent of Children in Crashes Using Child Safety Seats  
(Aged 0 to 8 years)**



- While 86.0% of 0 to 1 year olds were reported as being in a child safety seat at the time of the crash, 72.8% of 2 to 4 year olds, and 13.7% of 5 to 8 year olds were reported as being in a child safety seat.
- The decrease in child safety seat use for children aged 2 to 8 years is concerning. The National Highway Traffic Safety Administration recommends that older children ride in belt-positioning booster seats until they are approximately 80 pounds and can use an adult-size lap and shoulder belt system. The percentages of child safety seat use in the above graph indicate that children are often moved to adult-sized seatbelts prematurely.

### *Child Safety Seat Recommendations:*

- Infants should be placed in a rear-facing safety seat until they are at least 20 pounds AND one year of age.
- NEVER place a rear-facing child safety seat in the front seat of a vehicle with a passenger side air bag.
- Children over one year of age weighing 20-40 pounds should ride in forward facing child safety seats.
- Older children (approximately 4-8 years of age) should ride in belt-positioning booster seats until they are approximately 80 pounds and can use an adult-size lap and shoulder belt system.
- Avoid using secondhand child safety seats especially if it does not have the original instruction booklet, if it has been used in a crash, it does not have the manufacturer's date and model number on it, or if it is more than six years old.
- If your car has lap/shoulder combination belts, it could be critical to use a locking clip to properly secure your safety seat to the car. Consult the vehicle owner's manual.
- The safest place for any child aged 12 and under is in the back seat of the vehicle.

### *Seatbelt Recommendations:*

- Always use both the lap and shoulder belt. When worn properly, the shoulder belt should fit across the collar bone and the lap belt should fit low over the hips.
- Never place the shoulder strap under your arm or behind your back.
- Use belt-positioning booster seats for children who have outgrown their toddler safety seat (at about 4 years of age and 40 pounds). Booster seats help position an adult-size seatbelt for a safer fit on children.

### *Safety Restraint Laws (Effective July 1, 2000):*

- Utah law requires all motor vehicle occupants to be wearing a seatbelt when traveling in a motor vehicle. This is a secondary law which means a person may be issued a citation and subject to a \$45 fine only when the police officer has stopped the vehicle for another reason.
- The law is primary for drivers and passengers under age 19 years.
  - ⇒ Children age 4 years and under must ride in an approved child safety seat; and
  - ⇒ Children aged 5 to 19 years must ride in an approved child safety seat or safety belt.
 This primary law means a person may be issued a citation and subject to a fine of not more than \$45 if a law enforcement officer notices children are not properly restrained.