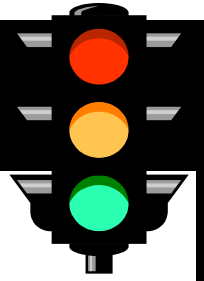


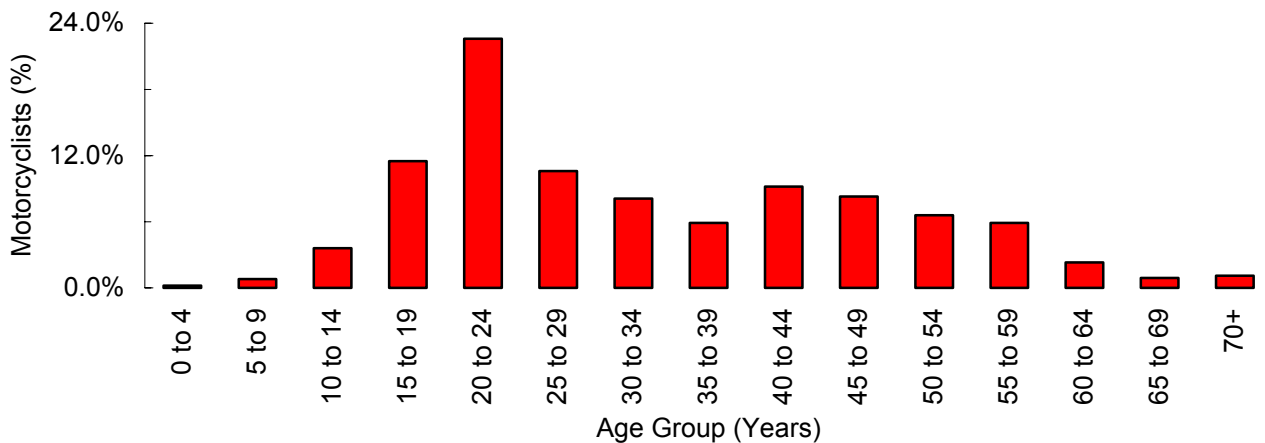
## MOTORCYCLES



### Did you know that in 2004. . .

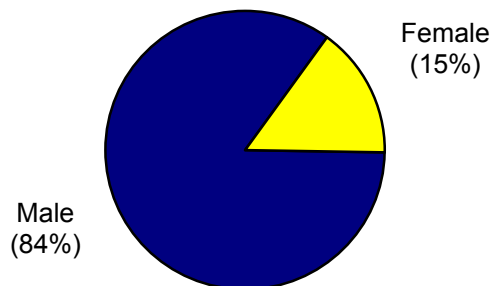
- There were 938 total motorcycle crashes in Utah, resulting in 877 injured motorcyclists and 31 motorcyclist fatalities.
- There was an 18.8% increase from 2003 in the rate of total motorcycle crashes, and a 17.9% increase from 2003 in the rate of motorcycle injury crashes.
- Nearly all of the motorcycle crashes resulted in a non-fatal injury (85.8%) compared to 36.0% of all motor vehicle crashes.
- Motorcyclists were 16 times more likely to be killed in a crash than other crash occupants.

### Age of Motorcyclists (Driver and Passenger) Involved in Crashes (Utah 2004)



- Approximately one-half (49.3%) of the motorcyclists involved in crashes were under the age of 30 years.
- Motorcyclists aged 20 to 24 years were involved in the highest percentage of crashes (22.6%).

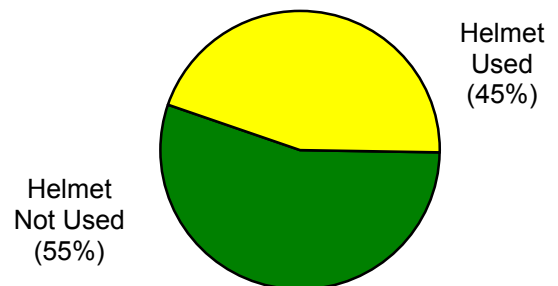
### Gender of Motorcyclists Involved in Crashes (Utah 2004)



NOTE: Gender was missing for 1% of motorcyclists.

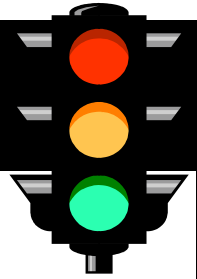
- Most motorcyclists involved in crashes were male (84%).
- The high percentage of male motorcyclists involved in crashes does not necessarily indicate that male motorcyclists are at greater risk for a crash, but may reflect the higher proportion of motorcycle users who are male.

### Helmet Use of Motorcyclists Killed in a Crash (Utah 2004)

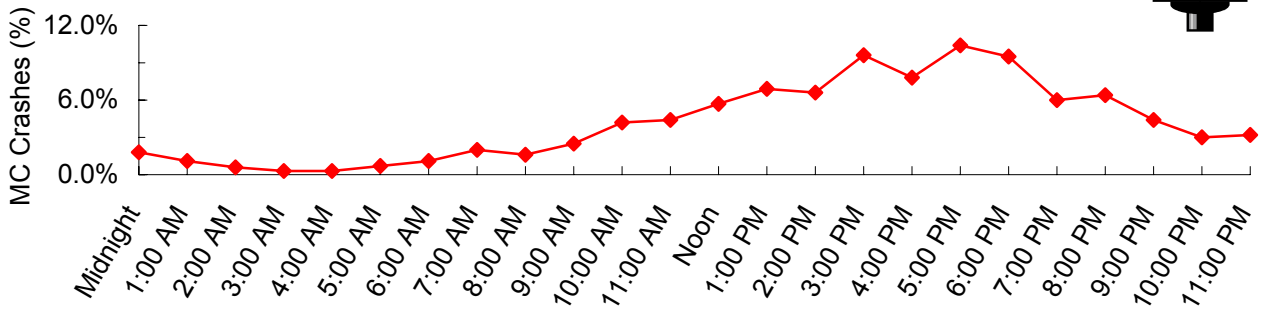


- The majority of the motorcyclists killed in a crash were not wearing a helmet (55%).
- Overall, only 37.2% of motorcycle drivers and passengers involved in crashes wore a helmet.
- Utah law states that anyone under the age of 18 years riding a motorcycle, either as the driver or as a passenger, must wear a helmet approved by the Department of Public Safety.

## MOTORCYCLES

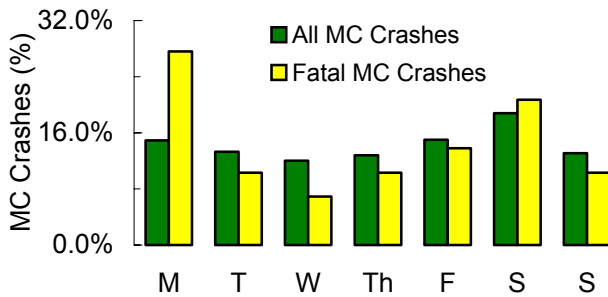


Time of Day Motorcycle Crashes Occurred (Utah 2004)



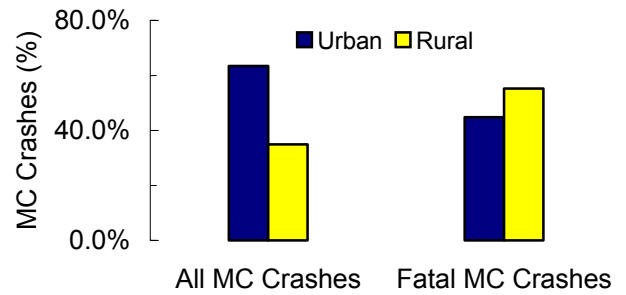
- The highest percentage of motorcycle crashes occurred between 1:00 pm and 6:00 pm.

Motorcycle Crashes by Day of Week (Utah 2004)



- The highest percentage of all motorcycle crashes occurred on Saturday (18.8%).
- Fatal motorcycle crashes occurred most frequently on Monday (27.6%).

Urban/Rural Location of Motorcycle Crashes (Utah 2004)



- The majority of all motorcycle crashes occurred in urban areas (63.7%).
- The largest percentage of fatal motorcycle crashes occurred in rural areas (55.2%).
- Motorcycle crashes in rural areas were twice as likely to result in a fatality than motorcycle crashes in urban areas.

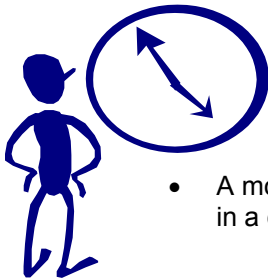
Leading Motorcycle Crash Violations\* (Utah 2004)

- Following Too Close (12.5%)
- Improper Lookout (9.3%)
- Driving Under the Influence (7.4%)
- Speeding (6.0%)
- Reckless Driving (4.6%)

Approximately one-quarter (22.6%) of the motorcycle drivers involved in crashes received a citation.

\*Does not include "other moving violations" and "other non-moving violations".

Motorcycle Crash Clock (Utah 2004)



- A motorcyclist was involved in a crash every 8 hours.

Alcohol and Other Drug Involvement



- Of the 30 motorcycle drivers involved in fatal crashes in 2004, 5 were impaired by alcohol or other drugs (16.7%).
- This compares to 4.5% of motorcycle drivers involved in fatal crashes in 2003 that were impaired.