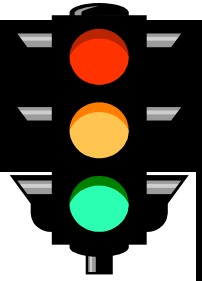


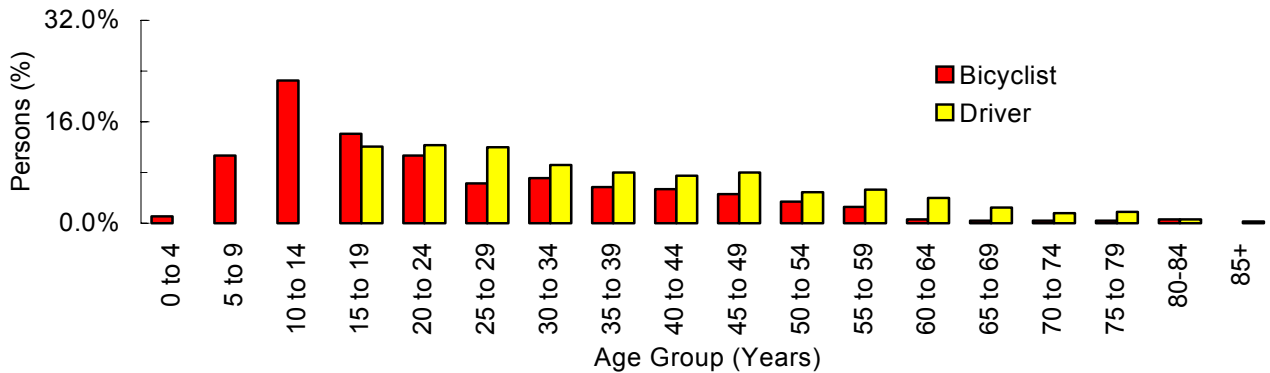
BICYCLISTS



Did you know that in 2004. . .

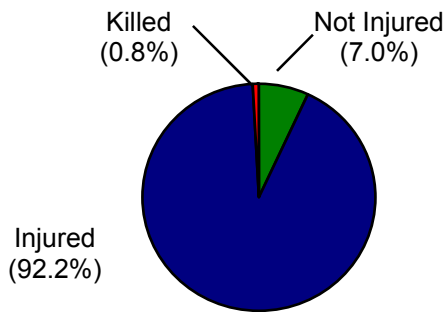
- 703 bicyclists were involved in motor vehicle crashes; 648 were injured, and 6 were killed.
- Bicyclists were 4 times more likely to be killed in a crash than other crash occupants.

Age of Persons Involved in Bicyclist-Motor Vehicle Crashes (Utah 2004)



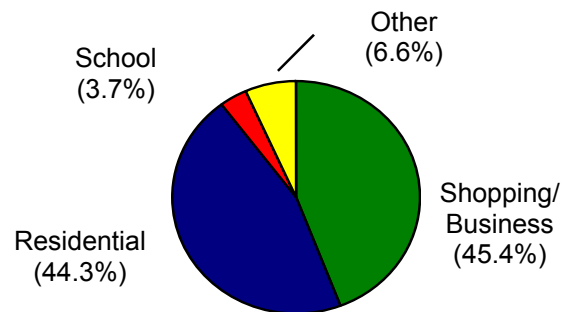
- The highest percentage of bicyclists involved in crashes were aged 10 to 14 years (22.5%).
- The highest percentage of drivers involved in bicyclist crashes were aged 20 to 24 years (12.3%).

Bicyclist Injury Severity (Utah 2004)



- Nearly all bicyclists (92.2%) involved in crashes sustained an injury compared to 21.0% of all motor vehicle crash occupants.

Location of Bicyclist-Motor Vehicle Crashes (Utah 2004)



- The majority of bicyclist-motor vehicle crashes occurred in shopping/business (45.4%) and residential (44.3%) areas.

Top 3 Contributing Factors Involved in Bicyclist-Motor Vehicle Crashes:

1. Improper Lookout (46.6%)
2. Failed to Yield Right-of-Way (34.0%)
3. Hit and Run (6.7%)

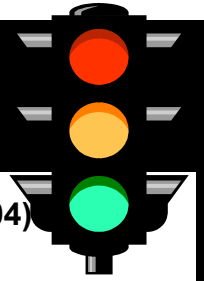
- In addition to the above, "driving under the influence," "had been drinking," and "under the influence of drugs" accounted for 0.9% of bicyclist-motor vehicle crashes.

Top 3 Violations of Drivers Involved in Bicyclist-Motor Vehicle Crashes:

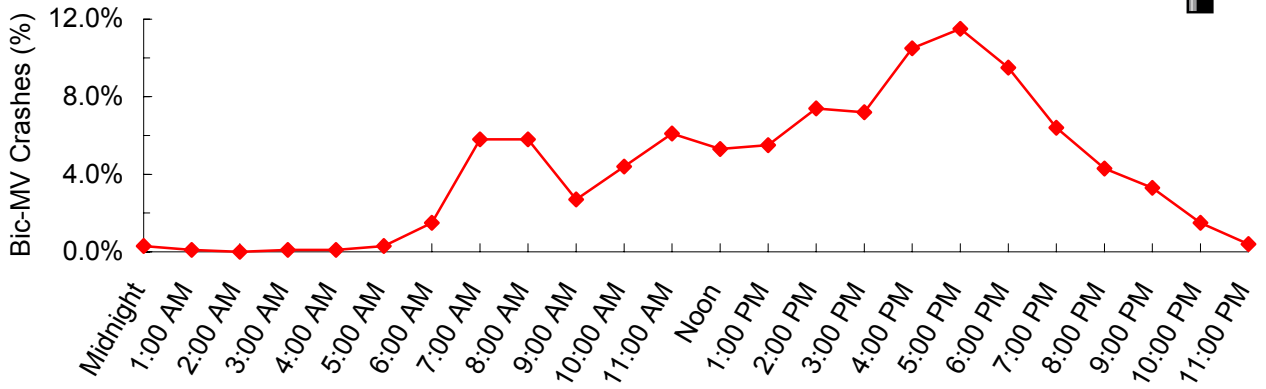
1. Failed to Yield Right-of-Way (42.7%)
2. Improper Lookout (24.1%)
3. Other Non-Moving Violations (14.1%)

- Over one-quarter (29.4%) of drivers involved in bicyclist-motor vehicle crashes received a citation.

BICYCLISTS

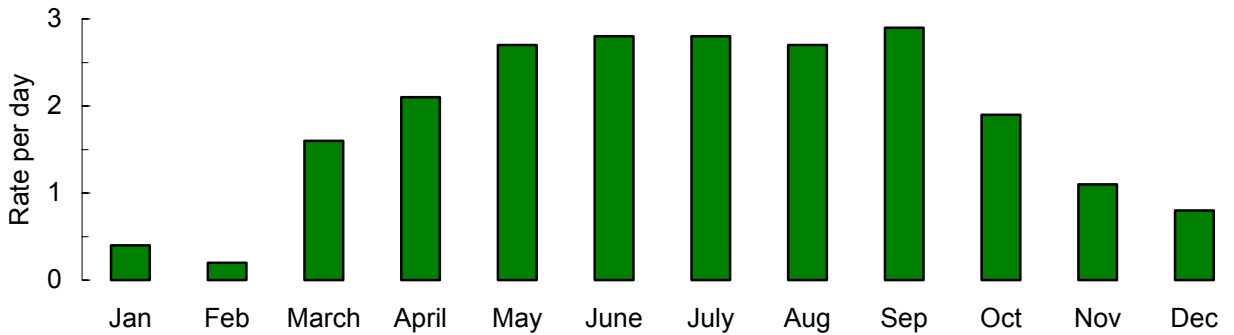


Time of Day Bicyclist-Motor Vehicle Crashes Occurred (Utah 2004)



- Bicyclist-motor vehicle crashes occurred most often between 3:00 pm to 7:00 pm. There was also a small peak between 7:00 am and 8:00 am.

Month of the Year Bicyclist-Motor Vehicle Crashes Occurred (Utah 2004)



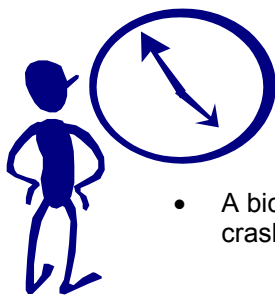
- September (2.9) had the highest rate per day of bicyclist-motor vehicle crashes.

Actions of Bicyclists Prior to Crashes (Utah 2004)

- Riding in Roadway with Traffic (21.9%)
- Riding in Roadway Against Traffic (17.4%)
- Crossing Intersection with Signal (15.6%)
- Riding on Sidewalk (11.9%)
- Crossing Intersection with No Signal (10.0%)

- “Crossing Intersection (with signal, no signal, against signal, diagonally)” comprised 33.6% of bicyclist actions prior to crashes.

Bicyclist Crash Clock (Utah 2004)



- A bicyclist was involved in a crash every 12 1/2 hours.

Alcohol and Other Drug Involvement



- Of the 6 bicyclists killed in 2004, none were impaired by alcohol or other drugs.
- Of the drivers involved in fatal bicyclist-motor vehicle crashes, none were cited for “driving under the influence.”