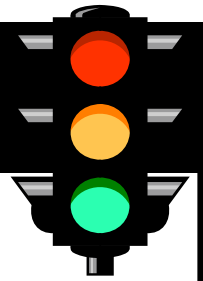


PERSONS AND CRASHES

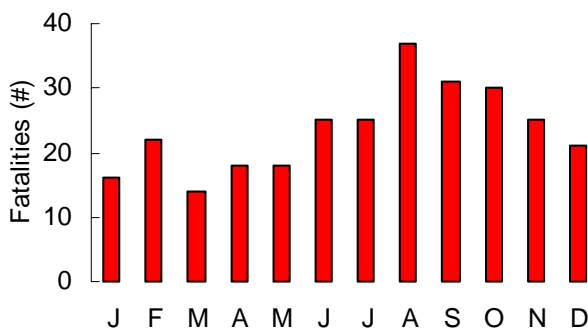


Motor vehicle crashes are the leading cause of death and disability for persons in the United States.

Did you know that in 2005 . . .

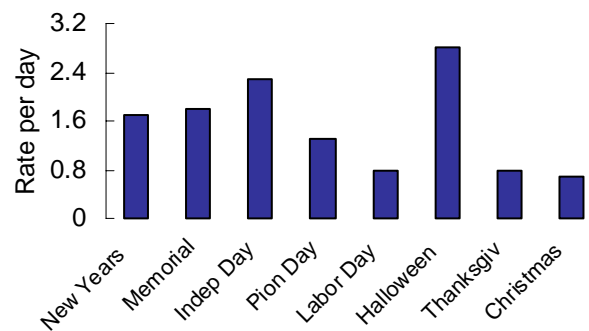
- 54,938 motor vehicle crashes occurred in Utah which resulted in 29,221 injured persons and 282 fatalities.
- Utah's injury crash rate decreased 1.4% from 2004, and the fatal crash rate decreased 11.3%.
- A motor vehicle crash occurred in Utah every 10 minutes, a person was injured in a crash every 18 minutes, and a person died in a crash every 31 hours.

Fatalities by Month (Utah 2005)



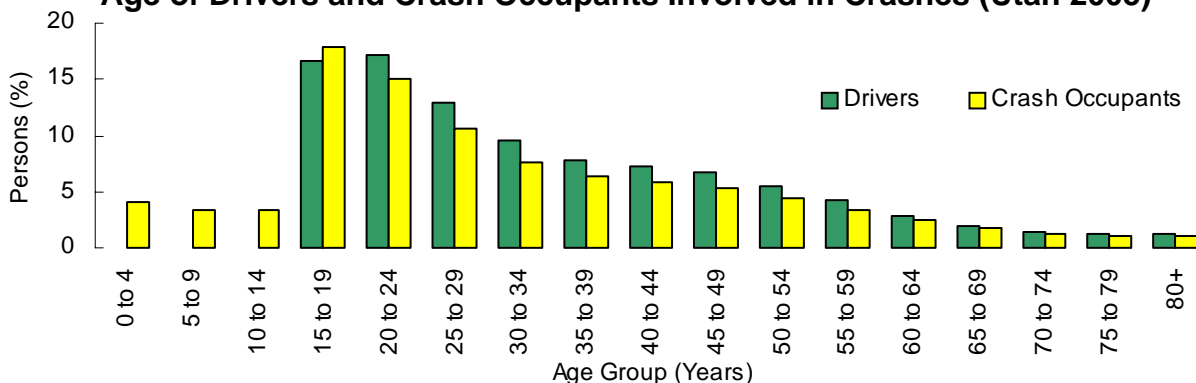
- The majority (35%) of 2005 fatalities occurred during August, September and October.

Holiday Fatalities (Utah 2005)



- In 2005, Halloween had the highest rate of fatalities (2.8), while Christmas had the lowest rate (0.8).

Age of Drivers and Crash Occupants Involved in Crashes (Utah 2005)



- Drivers aged 20 to 24 years represented the largest percentage of drivers involved in crashes (17.2%).
- The largest proportion of crash occupants were aged 15 to 19 years (17.8%).

Leading Collision Descriptions (Utah 2005)

All Crashes

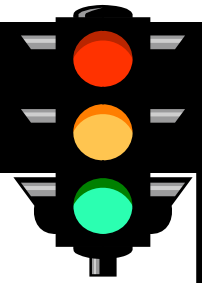
1. Rear End (30.2%)
2. Broadside (20.7%)
3. Side Swipe (6.7%)
4. Single Vehicle Rollover (5.5%)
5. Pedestrian/Bicyclist (2.3%)

Fatal Crashes

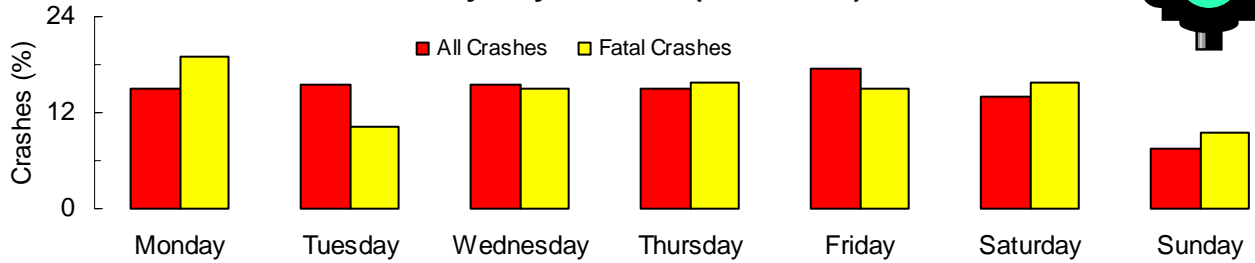
1. Single Vehicle Rollover (44.3%)
2. Broadside (17.9%)
3. Head-On (10.2%)
4. Pedestrian/Bicyclist (9.8%)
5. Rear End (7.2%)

Head-on collisions were 16 times more likely, and single vehicle rollovers were 14 times more likely to result in a fatality than other collisions.

PERSONS AND CRASHES

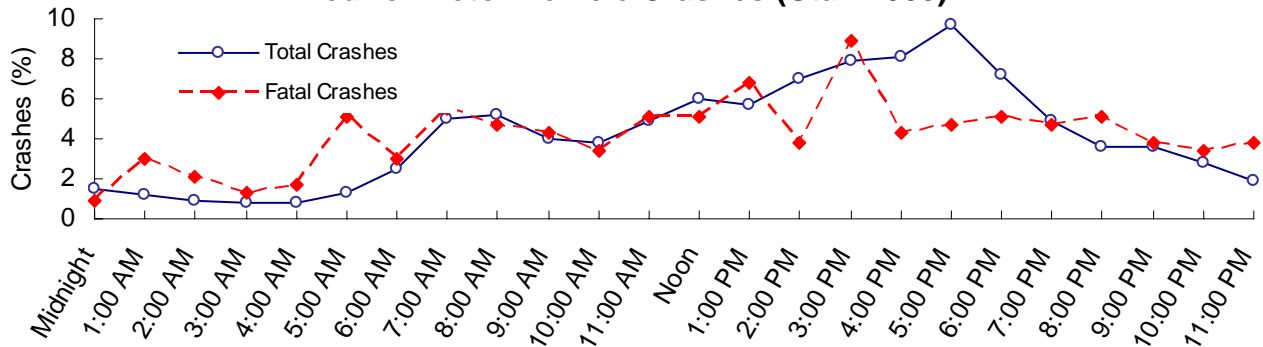


Crashes by Day of Week (Utah 2005)



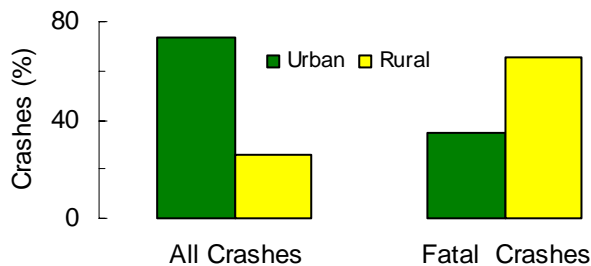
- The highest percentage of total crashes occurred on Friday (17.5%), while the highest percentage of fatal crashes occurred on Monday (19.1%).

Hour of Motor Vehicle Crashes (Utah 2005)



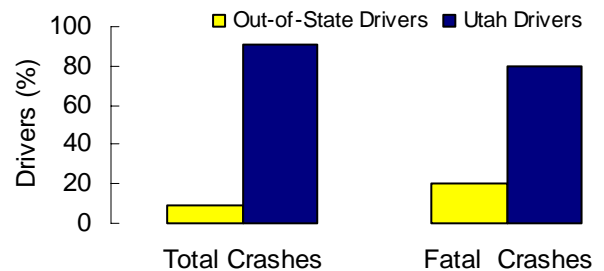
- Total crashes were more likely to occur between 2:00 pm and 6:00 pm, and peaked at 5:00 pm. Fatal crashes varied throughout the day, and peaked at 3:00 pm.

Urban/Rural Location (Utah 2005)



- While the majority of all crashes occurred in urban areas (73.0%), the majority of fatal crashes occurred in rural areas (65.5%).
- In fact, rural crashes were 5.4 times more likely to be fatal than urban crashes.

Out-Of-State Drivers (Utah 2005)



- While out-of-state licensed drivers accounted for 8.6% of drivers involved in crashes, they represented 19.9% of drivers involved in fatal crashes.

Leading Violations (Utah 2005)

All Crashes

- Following Too Close (18.2%)
- Failure to Yield Right-of-Way (17.7%)
- Improper Lookout (14.9%)

Fatal Crashes

- Vehicle Homicide (42.4%)
- Speeding (18.2%)
- Driving Under the Influence (12.1%)

- Officers at the scene cited 34.1% of drivers involved in a crash for a traffic violation.