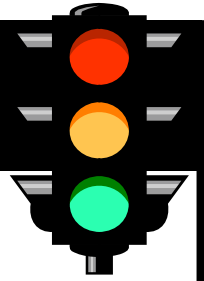


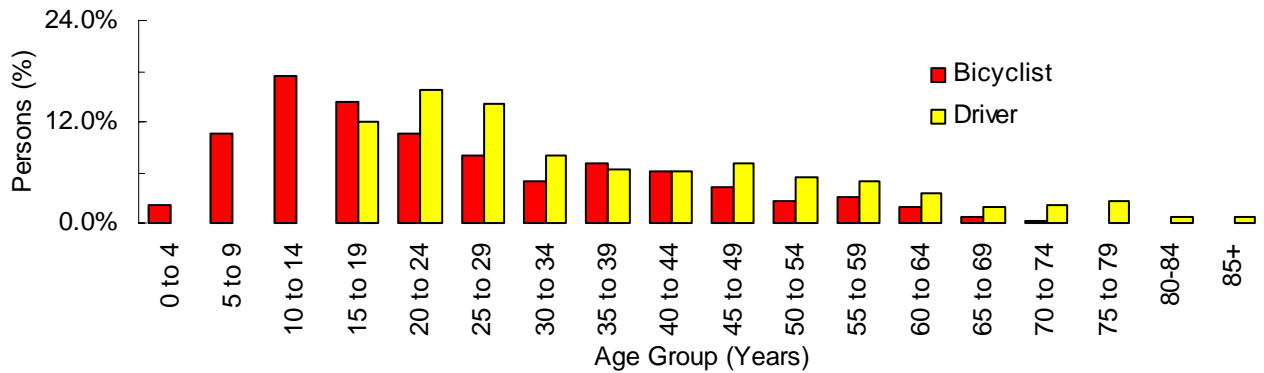
BICYCLISTS



Did you know that in 2005 . . .

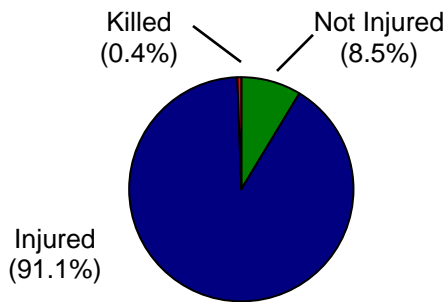
- 718 bicyclists were involved in motor vehicle crashes; 654 were injured, and 3 were killed.
- Bicyclists were 2 times more likely to be killed in a crash than other crash occupants.

Age of Persons Involved in Bicyclist-Motor Vehicle Crashes (Utah 2005)



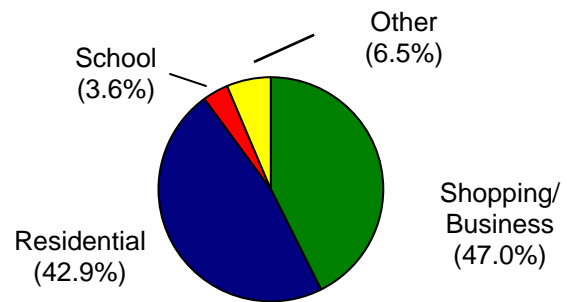
- The highest percentage of bicyclists involved in crashes were aged 10 to 14 years (17.5%).
- The highest percentage of drivers involved in bicyclist crashes were aged 20 to 24 years (15.7%).

Bicyclist Injury Severity (Utah 2005)



- Nearly all bicyclists (91.1%) involved in crashes sustained an injury compared to 20.2% of all motor vehicle crash occupants.

Location of Bicyclist-Motor Vehicle Crashes (Utah 2005)



- The majority of bicyclist-motor vehicle crashes occurred in shopping/business (47.0%) and residential (42.9%) areas.

Top 3 Contributing Factors Involved in Bicyclist-Motor Vehicle Crashes:

1. Improper Lookout (44.5%)
2. Failed to Yield Right-of-Way (29.6%)
3. Hit and Run (9.2%)

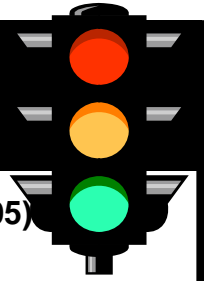
- In addition to the above, "driving under the influence," "had been drinking," and "under the influence of drugs" accounted for 1.1% of total bicyclist-motor vehicle crashes.

Top 3 Violations of Drivers Involved in Bicyclist-Motor Vehicle Crashes:

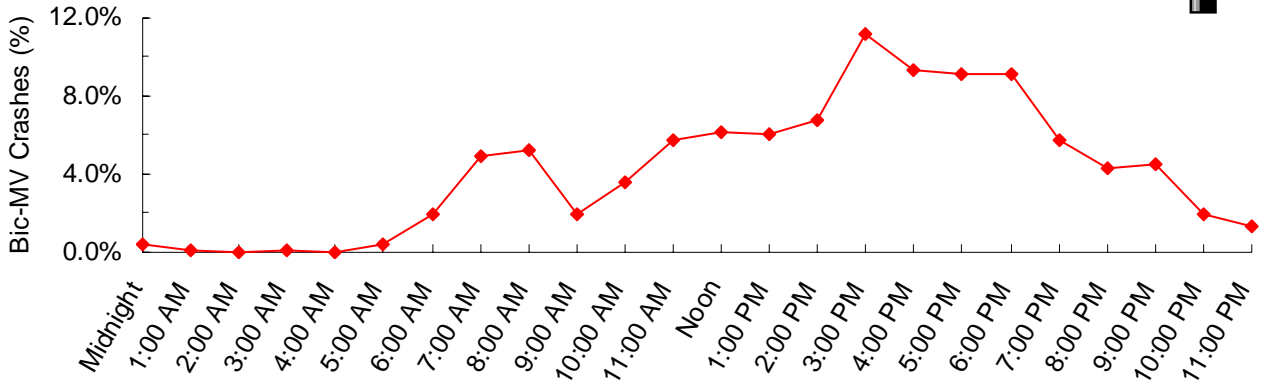
1. Failed to Yield Right-of-Way (42.9%)
2. Improper Lookout (23.2%)
3. Other Non-Moving Violations (12.5%)

- Nearly one-third (32.5%) of drivers involved in bicyclist-motor vehicle crashes received a citation.

BICYCLISTS

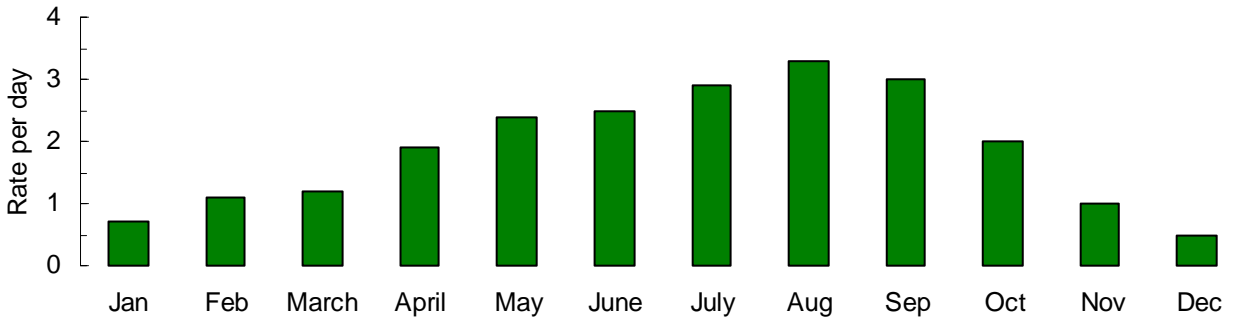


Time of Day Bicyclist-Motor Vehicle Crashes Occurred (Utah 2005)



- Bicyclist-motor vehicle crashes occurred most often between 2:00 pm to 6:00 pm. There was also a small peak during the 7:00 am and 8:00 am hours.

Month of the Year Bicyclist-Motor Vehicle Crashes Occurred (Utah 2005)



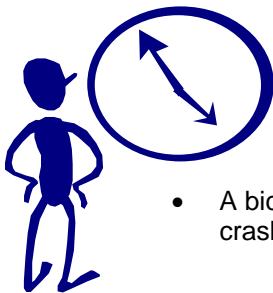
- August (3.3) had the highest rate per day of bicyclist-motor vehicle crashes.

Actions of Bicyclists Prior to Crashes (Utah 2005)

- Riding in Roadway with Traffic (25.2%)
- Riding in Roadway Against Traffic (17.1%)
- Crossing Intersection with Signal (12.1%)
- Riding on Sidewalk (11.7%)
- Crossing Intersection with No Signal (9.7%)

- “Crossing Intersection (with signal, no signal, against signal, diagonally)” comprised 28.7% of bicyclist actions prior to crashes.

Bicyclist Crash Clock (Utah 2005)



- A bicyclist was involved in a crash every 13 hours.

Alcohol and Other Drug Involvement



- Of the 3 bicyclists killed in 2005, none were impaired by alcohol or other drugs, and 1 bicyclist (33.3%) was killed by an impaired driver.