

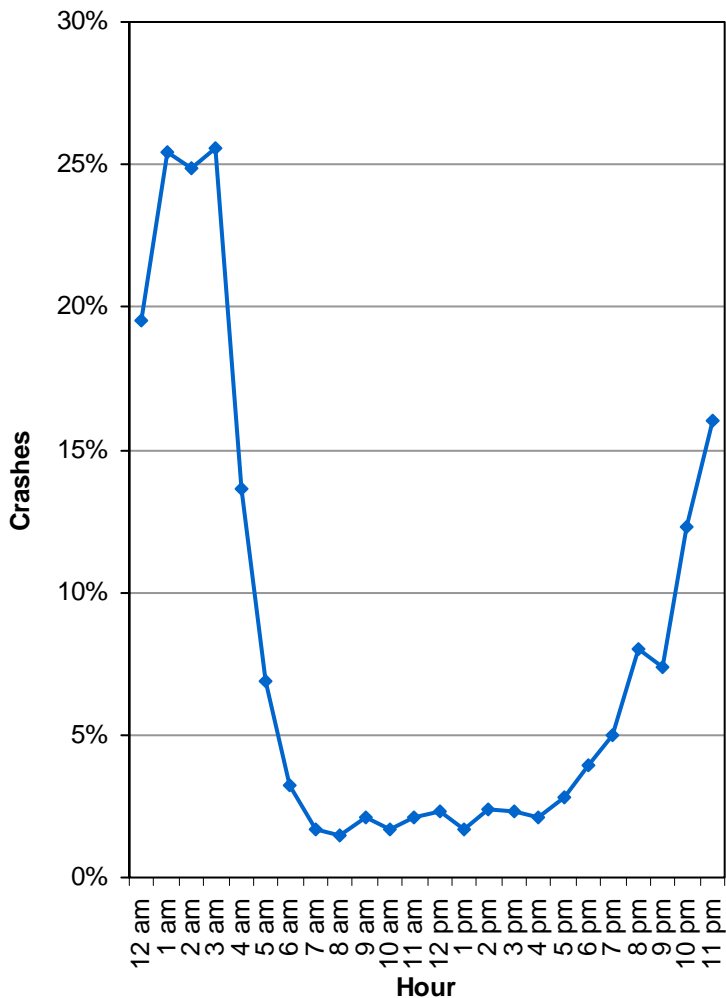
Did you know in 2007:

- 2,718 alcohol-impaired driver crashes occurred in Utah which resulted in 1,900 injured persons and 42 deaths.
- Alcohol-impaired driver crashes were 3.6 times more likely to be fatal than other crashes.
- The number of alcohol-impaired driver fatal crashes increased 16% in 2007 from 2006.

Alcohol-Impaired Drivers

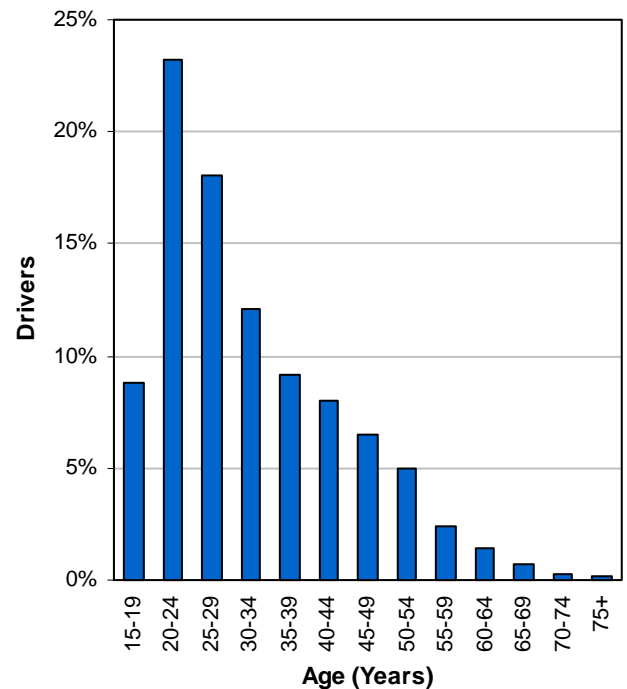


Percent of Total Crashes with an Alcohol-Impaired Driver by Hour (Utah 2007)



- While 4% of total crashes involved an alcohol-impaired driver, nearly one-fifth (18%) of crashes occurring during the hours of 10:00 p.m.-4:59 a.m. involved an alcohol-impaired driver.

Age of Alcohol-Impaired Drivers in Crashes (Utah 2007)



- Drivers aged 20 to 24 years had the most alcohol-impaired crashes.
- Of the impaired drivers, 341 (12%) were under the age of 21 years.



Previous DUI (Utah 2007)

- 16% of the alcohol-impaired drivers in fatal crashes were previously convicted of driving under the influence in the past three years.

Alcohol-Impaired Drivers



Alcohol-Impaired Drivers in Different Types of Fatal Crashes



Pedestrian-Motor Vehicle Crashes

Of the 32 pedestrians killed, two (6%) were killed by an impaired driver.



Bicyclist-Motor Vehicle Crashes

Of the six bicyclists killed, none were killed by an impaired driver.



Motorcycle Crashes

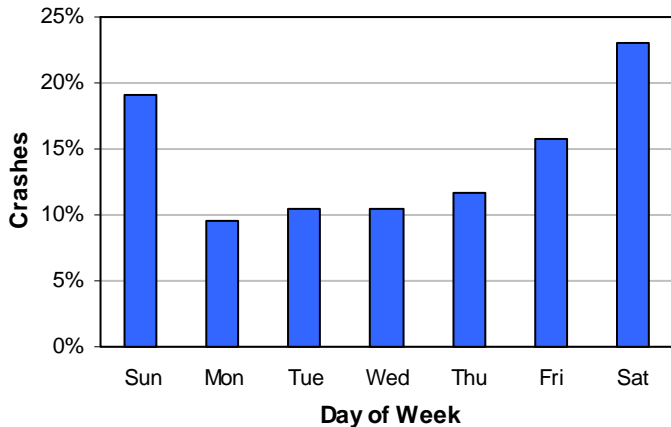
Of the 33 motorcyclists killed, four (12%) were killed by an impaired driver.



Teenage Driver Crashes

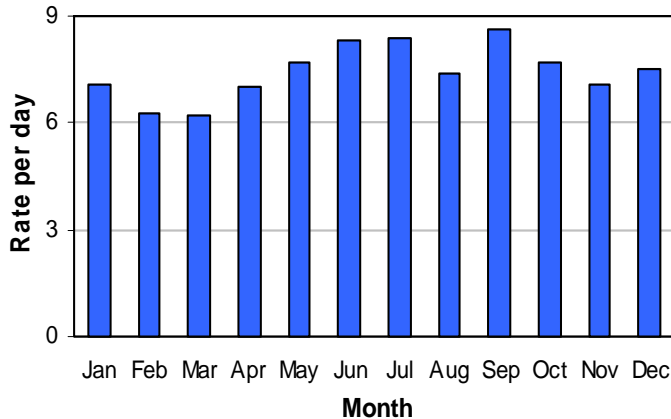
Of the 47 teenage drivers in fatal crashes, four (9%) were impaired by alcohol.

Alcohol-Impaired Driver Crashes by Day of the Week (Utah 2007)



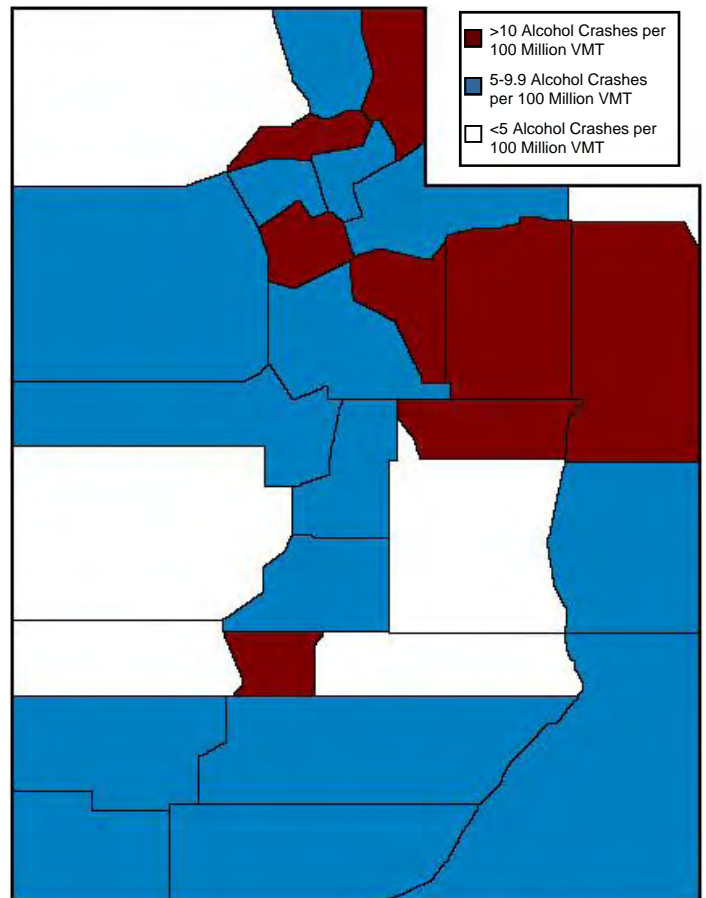
- The highest percentage of alcohol-impaired driver crashes occurred on Saturday (23%).

Alcohol-Impaired Driver Crashes by Month (Utah 2007)



- The highest rates per day of alcohol-impaired driver crashes occurred in September, July, and June.

Alcohol-Impaired Driver Crashes by County (Utah 2007)



- Uintah, Salt Lake, and Weber Counties had the highest rates of alcohol-impaired driver crashes per vehicle miles traveled (VMT).
- Wayne, Beaver, and Daggett Counties had the lowest rates of alcohol-impaired driver crashes per VMT.