

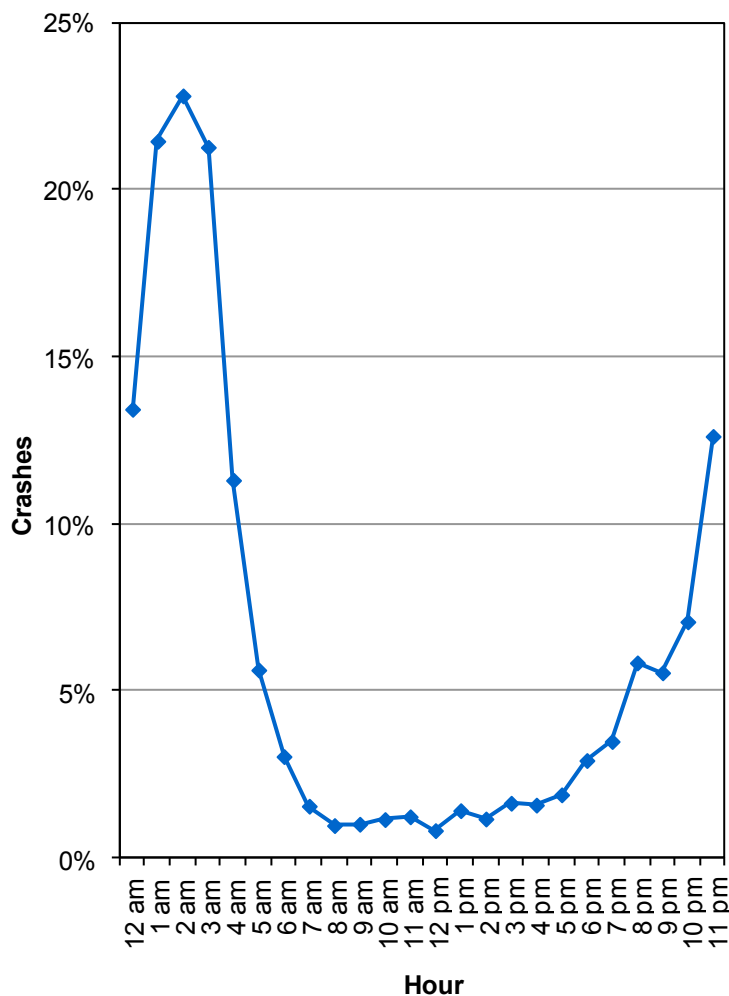
Did you know in 2013:

- 1,736 alcohol-impaired driver crashes occurred in Utah which resulted in 1,073 injured persons and 23 deaths.
- Alcohol-impaired driver crashes were 4.0 times more likely to be fatal than other crashes.
- The number of deaths involving an alcohol-impaired driver increased 15% in 2013 from 2012.

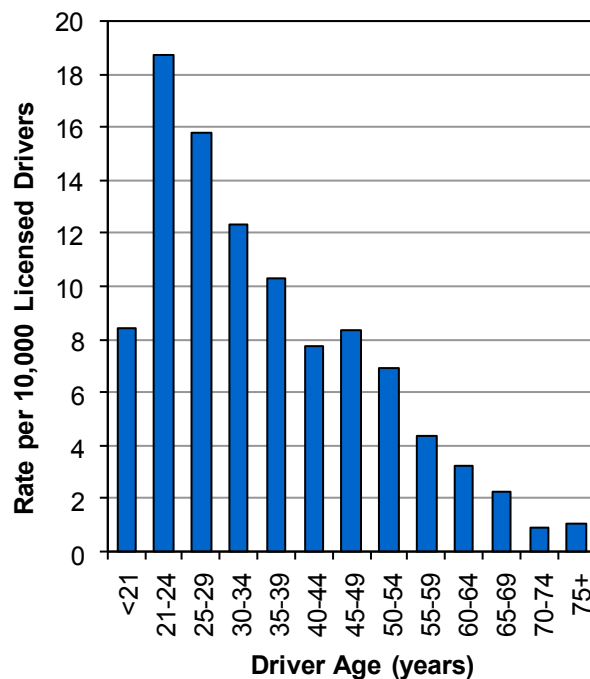
Alcohol-Impaired Drivers



Percent of Total Crashes with an Alcohol-Impaired Driver by Hour (Utah 2013)



Rate of Alcohol-Impaired Drivers in Crashes per Licensed Driver (Utah 2013)



- Drivers aged 21 to 24 years had the highest rates of alcohol-impaired crashes.
- Of the impaired drivers, 164 (9%) were under the age of 21 years.

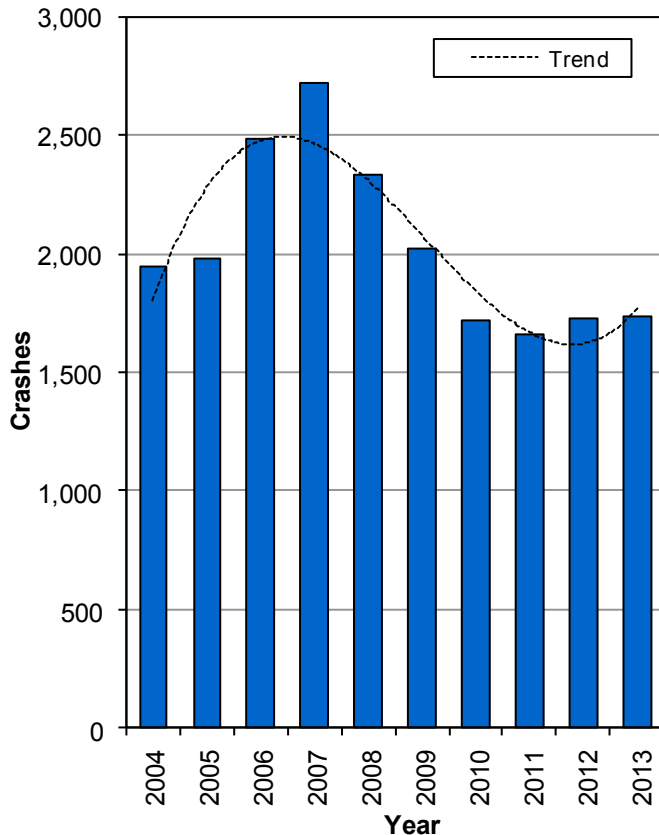
- While 3% of total crashes involved an alcohol-impaired driver, 16% of crashes occurring during the hours of 11:00 p.m.-4:59 a.m. involved an alcohol-impaired driver.



Previous DUI (Utah 2013)

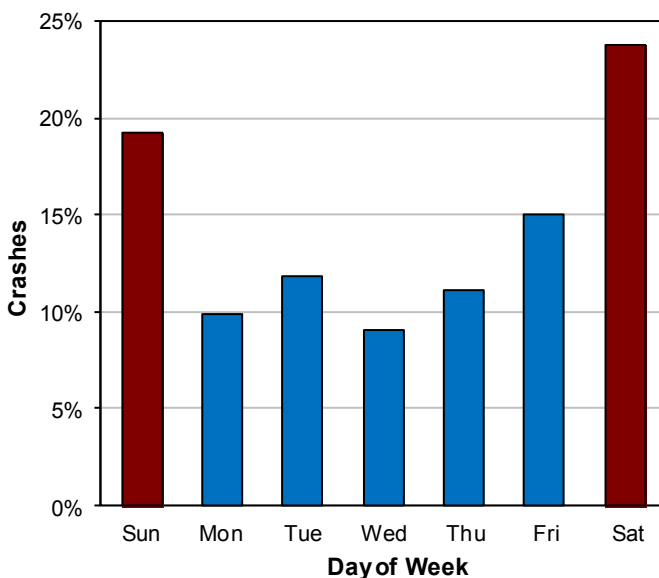
- 13% of the alcohol-impaired drivers in fatal crashes were previously convicted of driving under the influence in the past three years.

Alcohol-Impaired Driver Crashes (Utah 2004-2013)



- The number of alcohol-impaired driver crashes has remained relatively stable the past four years after previous decreases.

Alcohol-Impaired Driver Crashes by Day of the Week (Utah 2013)

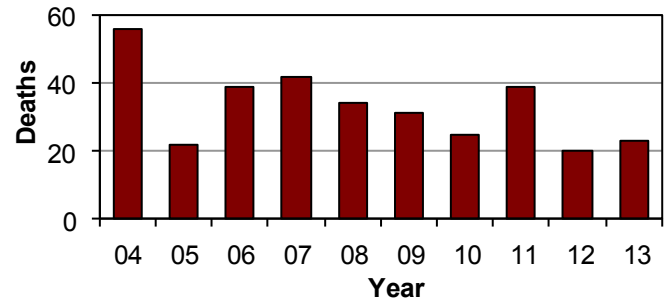


- The highest percentage of alcohol-impaired driver crashes occurred on weekends (43%).

Alcohol-Impaired Drivers

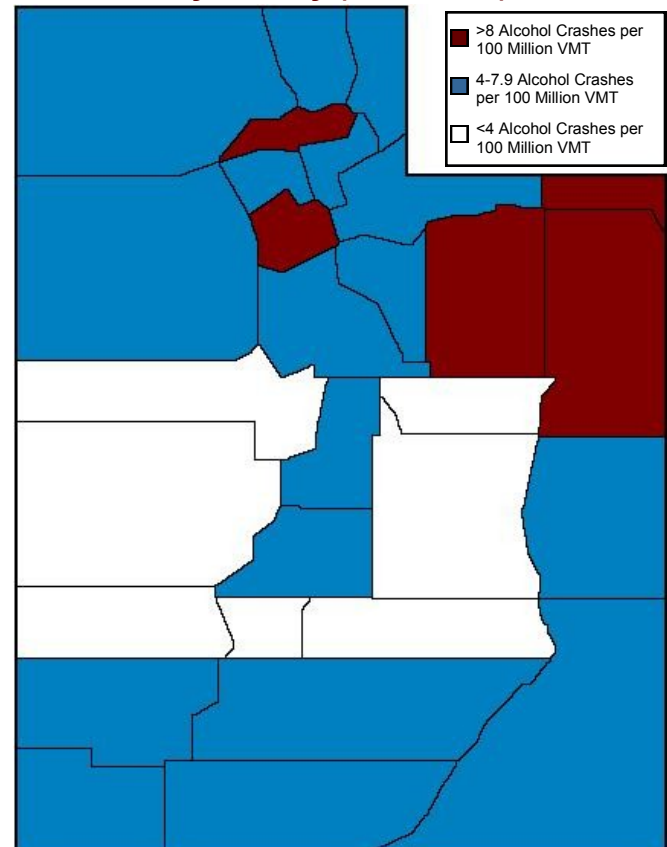


Deaths from Alcohol-Impaired Drivers (Utah 2004-2013)



- The 20 deaths in 2012 was the lowest amount in over 20 years.

Alcohol-Impaired Driver Crashes by County (Utah 2013)



- Daggett, Duchesne, and Uintah Counties had the highest rates of alcohol-impaired driver crashes per vehicle miles traveled (VMT).
- Wayne, Piute, and Juab Counties had the lowest rates of alcohol-impaired driver crashes per VMT.