

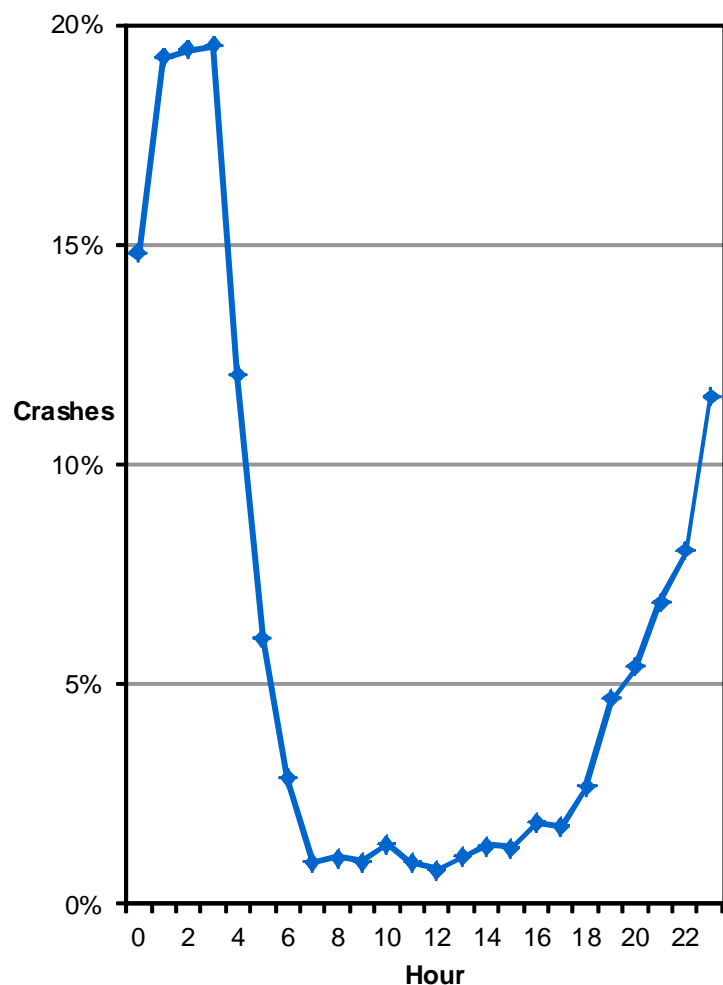
Did you know in 2016:

- 1,970 alcohol-related driver crashes occurred in Utah which resulted in 1,220 injured persons and 36 deaths.
- Alcohol-related driver crashes were 4.3 times more likely to be fatal than other crashes.
- 3.2% of crashes involved an alcohol-related driver.

Alcohol

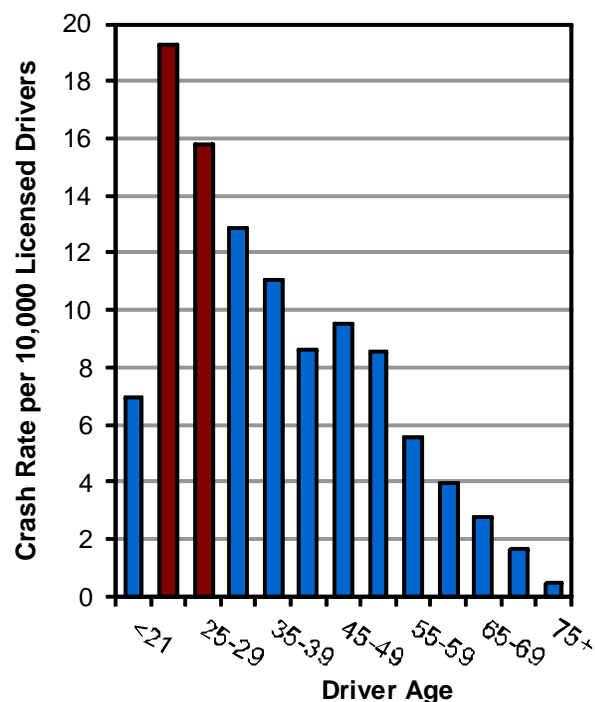


Percent of Total Crashes with an Alcohol-Related Driver by Hour (Utah 2016)



- While 3% of total crashes involved an alcohol-related driver, 15% of crashes occurring during the hours of 11:00 p.m.-4:59 a.m. involved an alcohol-related driver.

Rate of Alcohol-Related Drivers in Crashes per Licensed Driver (Utah 2016)



- Drivers aged 21 to 24 years had the highest rates of alcohol-related crashes.
- 157 (8%) of the drivers were under the age of 21 years.

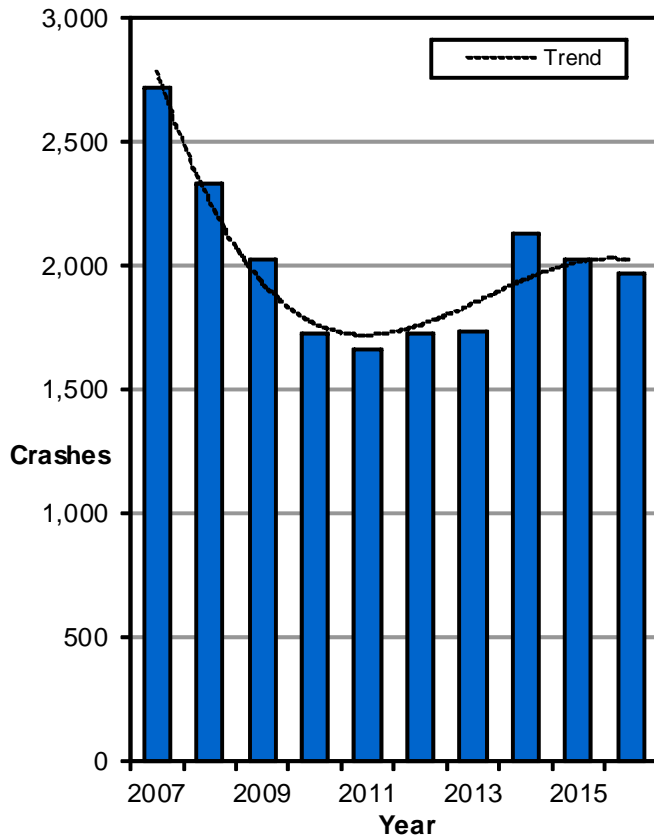


Previous DUI (Utah 2016)

- 9% of the drunk drivers in fatal crashes were previously convicted of driving under the influence in the past five years.

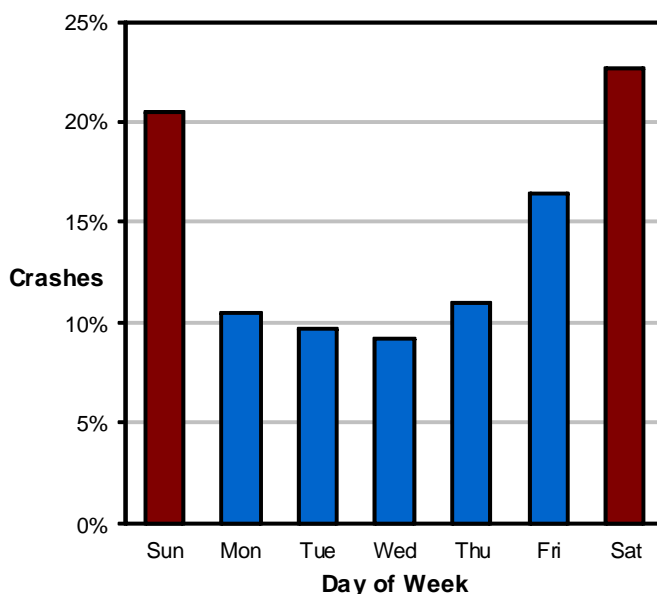


Alcohol-Related Driver Crashes (Utah 2007-2016)



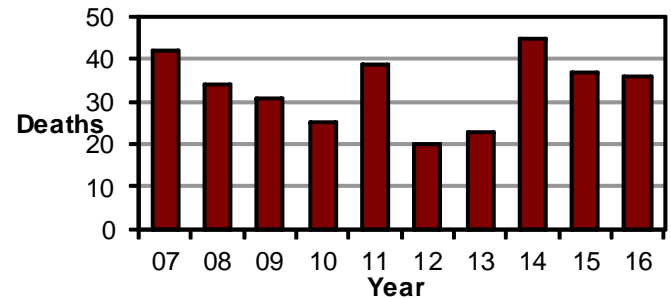
- The number of alcohol-related driver crashes decreased for the 2nd straight year.

Alcohol-Related Driver Crashes by Day of the Week (Utah 2016)



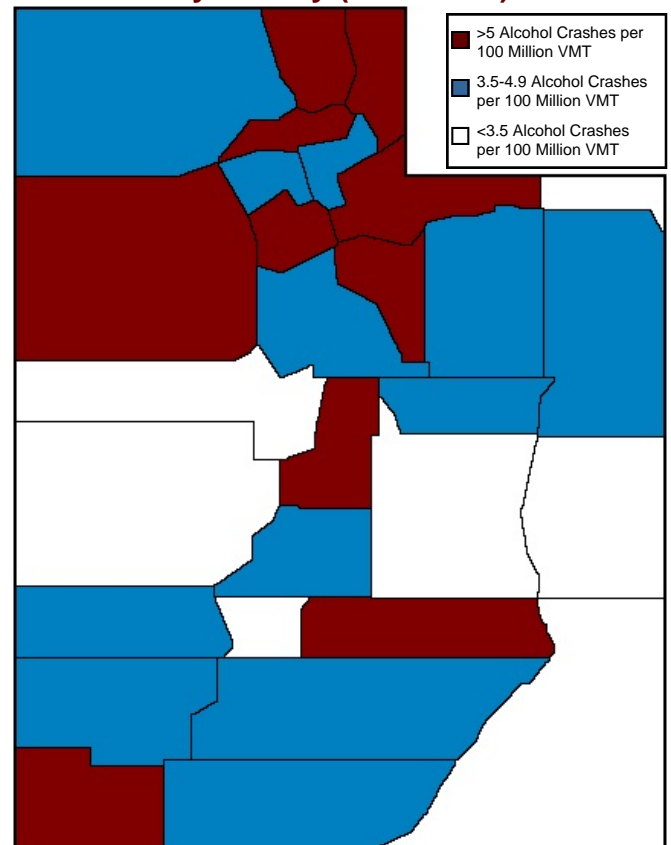
- The highest percentage of alcohol-related driver crashes occurred on weekends (43%).

Deaths from Drunk Drivers (Utah 2007-2016)



- The 45 deaths in 2014 was the highest amount since 56 deaths in 2004.

Alcohol-Related Driver Crashes by County (Utah 2016)



- Salt Lake, Weber, and Tooele Counties had the highest rates of alcohol-related driver crashes per vehicle miles traveled (VMT).
- Daggett, Grand, and Juab Counties had the lowest rates of alcohol-related driver crashes per VMT.