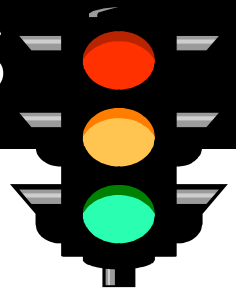


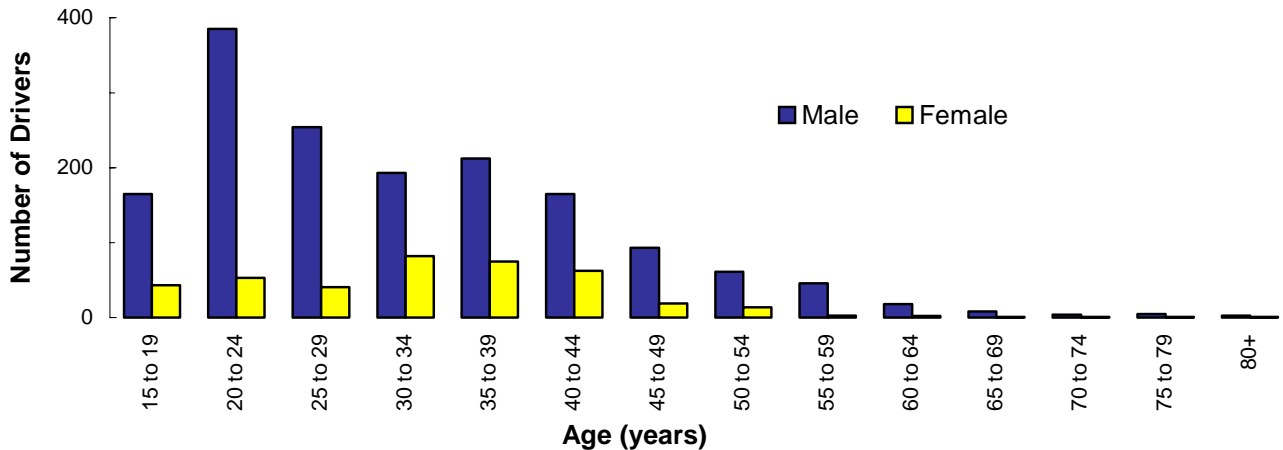
ALCOHOL and OTHER DRUGS



Did you know that in 1999. . .

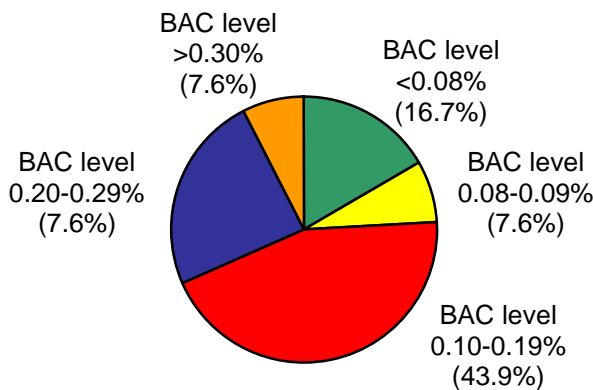
- ◆ There were 2,045 alcohol and other drug-related crashes in Utah that resulted in 1,851 injuries and 72 fatalities.
- ◆ Over half (58.8%) of alcohol and other drug-related crashes resulted in at least one injury compared to 37.6% of all motor vehicle crashes.
- ◆ Alcohol and other drug-related crashes were 6.7 times more likely to be fatal than non-alcohol/drug-related crashes.

Age and Gender of Drivers Involved in Alcohol and Other Drug-Related Crashes



- Male drivers were involved in the majority (80.4%) of alcohol and other drug-related crashes.
- Overall, male drivers between the ages of 20 to 24 years were involved in the largest number (385) of alcohol and other drug-related crashes.
- For female drivers, the age group of 30 to 34 years had the highest number (82) of alcohol and other drug-related crashes.
- Of the impaired drivers, 288 (17.7%) were under the age of 21 years.

Blood Alcohol Concentration (BAC) Levels of Drivers Involved in Fatal Alcohol-Related Crashes



- The majority (83.3%) of drivers involved in fatal alcohol-related crashes had blood alcohol concentration levels at or above the legal limit of 0.08%.

Driving Under the Influence

Driving under the influence (DUI) is driving (or in physical control of) a vehicle on a roadway in Utah with a blood alcohol content of 0.08% or more, or "unsafe" driving due to alcohol or other drugs in the body.

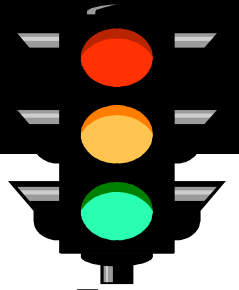
In 1999 there were 14,118 DUI arrests in Utah. The arrests occurred in the following counties:

1. Salt Lake (34.2%)
2. Utah (11.1%)
3. Weber (10.5%)
4. Davis (10.0%)
5. Washington (3.6%)
6. Summit (3.4%)
7. Tooele (3.1%)
8. Cache (2.9%)
9. Other Counties (21.1%)

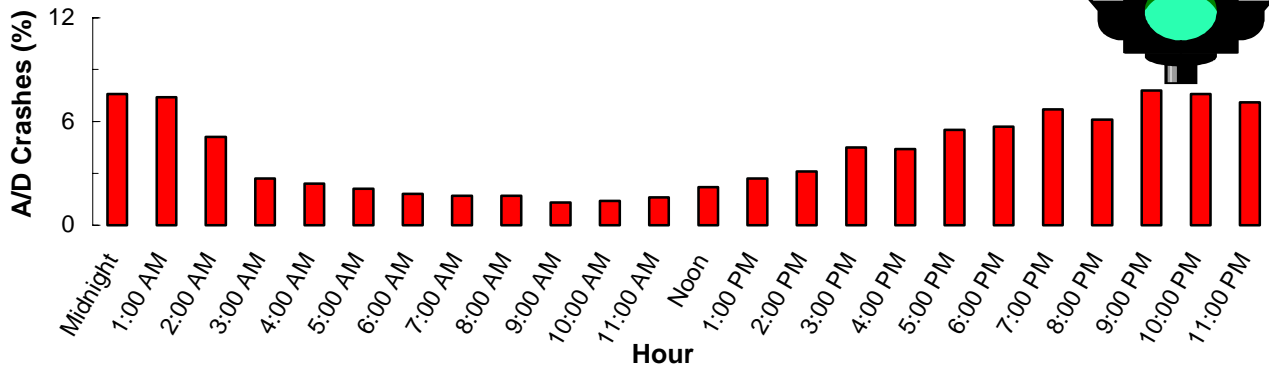
The ages of those arrested for DUI were:

Age	DUI Arrests	Age	DUI Arrests
15-20	1,272 (9.0%)	37-48	3,865 (27.4%)
21-24	2,516 (17.8%)	49+	1,377 (9.8%)
25-36	5,088 (36.0%)	Total	14,118 (100.0%)

ALCOHOL and OTHER DRUGS

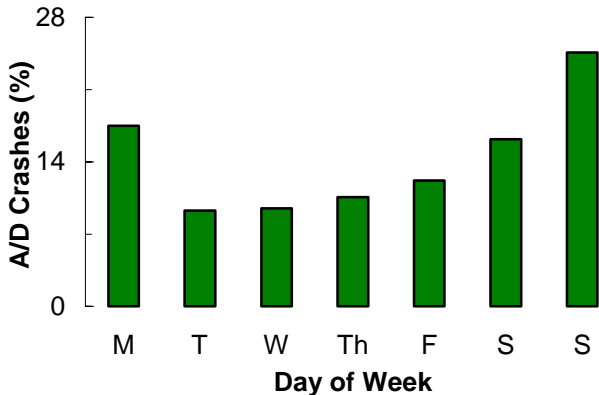


Time of Day Alcohol and Other Drug-Related Crashes Occurred



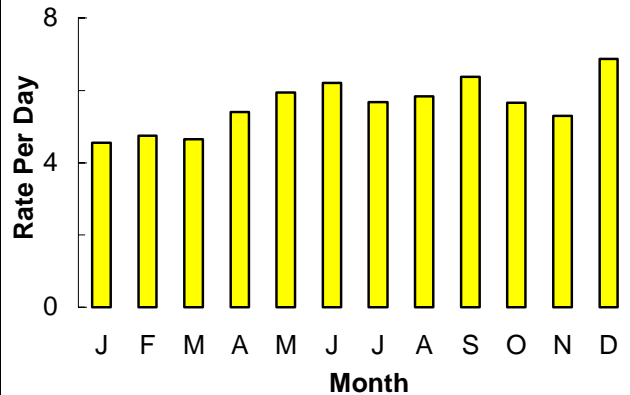
- Alcohol and other drug-related crashes peaked between 9:00 pm and 1:00 am. This is unlike most other types of motor vehicle crashes that tend to peak earlier in the evening (5:00 pm).

Day of the Week Alcohol and Other Drug-Related Crashes Occurred



- Over half (58.3%) of the total alcohol and other drug-related crashes occurred on Saturday, Sunday and Monday.
- For fatal alcohol and other drug-related crashes, more than half (56.1%) occurred on Sunday and Monday.

Month of the Year Alcohol and Other Drug-Related Crashes Occurred



- The highest rate of total alcohol and other drug-related crashes occurred in December.
- For fatal alcohol and other drug-related crashes, July had a rate that was at least 1.5 times higher than any other month of the year.

Alcohol and Other Drug Involvement in Different Types of Motor Vehicle Crashes



Pedestrian Crashes

Of the 38 pedestrian fatalities, 6 pedestrians and 2 drivers were impaired by alcohol and other drugs.



Bicyclist-Motor Vehicle Crashes

Of the 7 bicyclist fatalities, none were impaired by alcohol or other drugs. No impaired motor vehicle drivers were involved in fatal bicyclist-motor vehicle crashes.



Motorcycle Crashes

Of the 23 motorcyclist fatalities, 4 involved alcohol and other drug use by the motorcycle driver.