

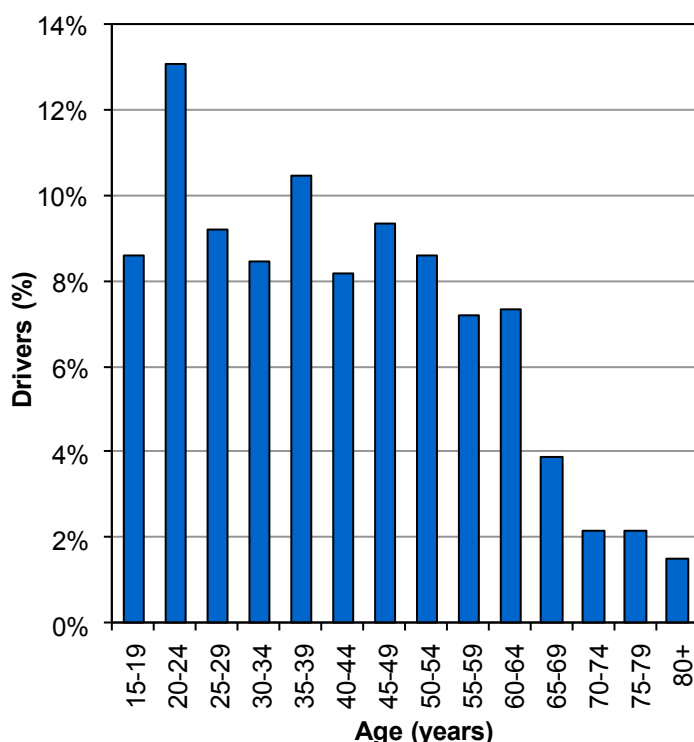
## Did you know in 2013:

- 777 bicyclists were hit by motor vehicles; 688 were injured and 6 were killed.
- Utah's bicyclist crash rate per population decreased 15% from 2012.

## Bicyclists

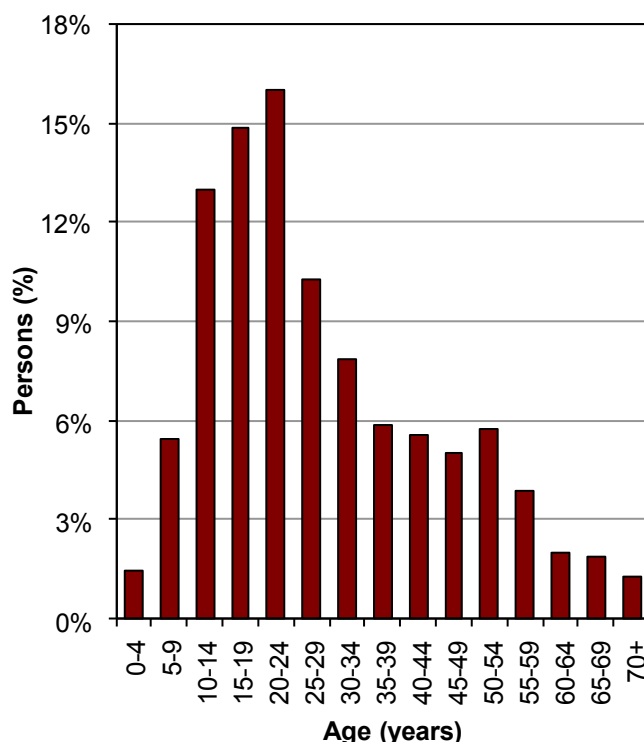


### Age of Drivers in Bicycle-Motor Vehicle Crashes (Utah 2013)



- One-half (50%) of drivers in bicycle-motor vehicle crashes were under 40 years.

### Age of Bicyclists in Bicycle-Motor Vehicle Crashes (Utah 2013)



- Nearly two-thirds (61%) of the bicyclists in crashes were under 30 years of age.

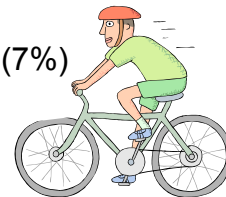
### Leading Contributing Factors of Drivers in Bicyclist Crashes (Utah 2013)

1. Fail to Yield Right of Way (39%)
2. Hit and Run (7%)
3. Driver Distraction (5%)
4. Improper Turn (4%)
5. Vision Obscured by Glare (4%)



### Leading Contributing Factors of Bicyclists in Crashes (Utah 2013)

1. Wrong Side of Road (14%)
  2. Improper Crossing (7%)
  3. Disregard Traffic Sign/Signal (7%)
- 48% of bicyclists had no contributing factor in the crash.

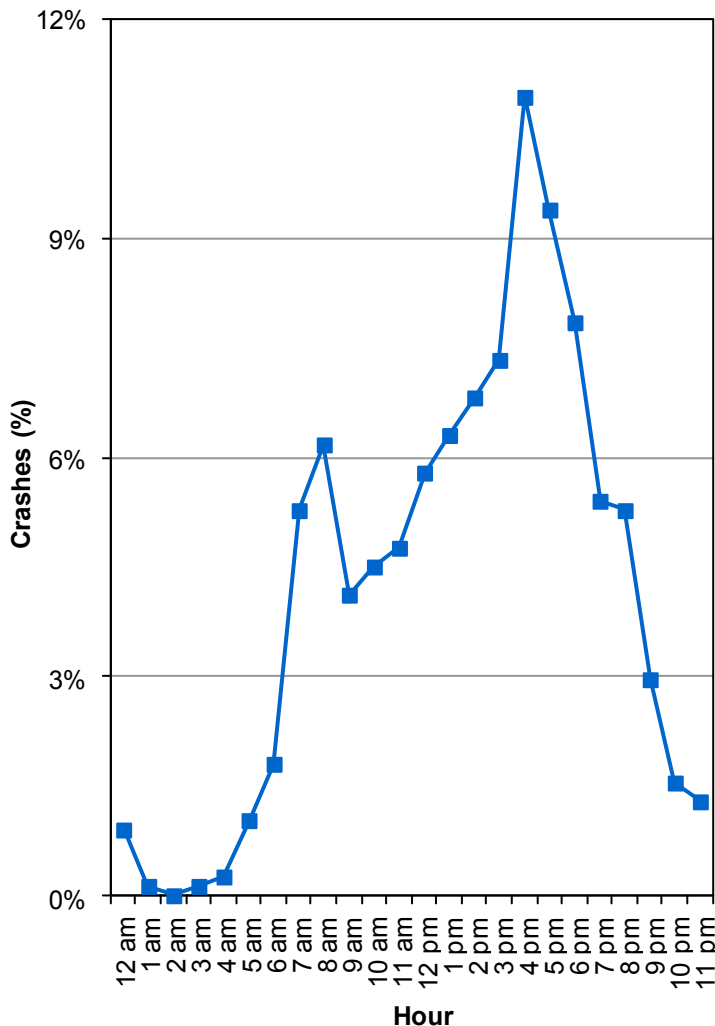


Over one-half (57%) of motor vehicles that hit bicyclists were turning. Drivers need to watch for bicycles before turning.

# Bicyclists

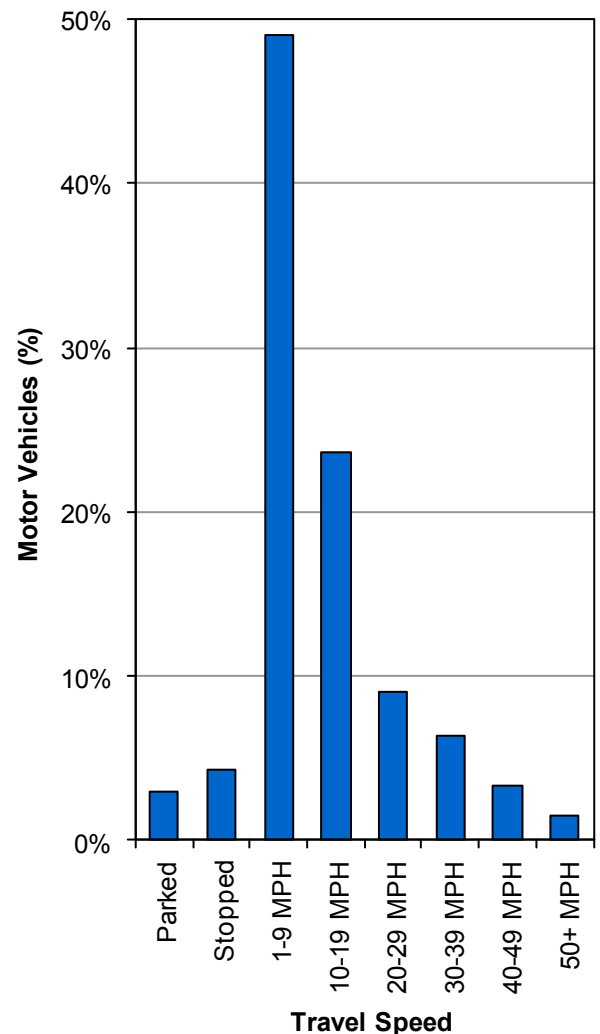


## Bicycle-Motor Vehicle Crashes by Hour (Utah 2013)



- Bicycle-motor vehicle crashes occurred most often between 3:00 p.m.-6:59 p.m.

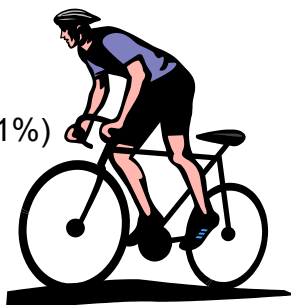
## Bicycle-Motor Vehicle Crashes by Motor Vehicle Travel Speed (Utah 2013)



- Nearly three-fourths (73%) of crashes with bicyclists occurred when the motor vehicle was traveling 1-19 MPH.

## Location of Bicyclists in Crashes (Utah 2013)

1. Marked Crosswalk (26%)
2. In Roadway (Not at Intersection) (21%)
3. Shoulder (18%)
4. Sidewalk (16%)
5. Unmarked Crosswalk (8%)



## Motor Vehicle Action Prior to Crash (Utah 2013)

1. Turning Right (40%)
2. Straight Ahead (33%)
3. Turning Left (16%)
4. Entering/Leaving Traffic (3%)
5. Stopped/Slowing (2%)