



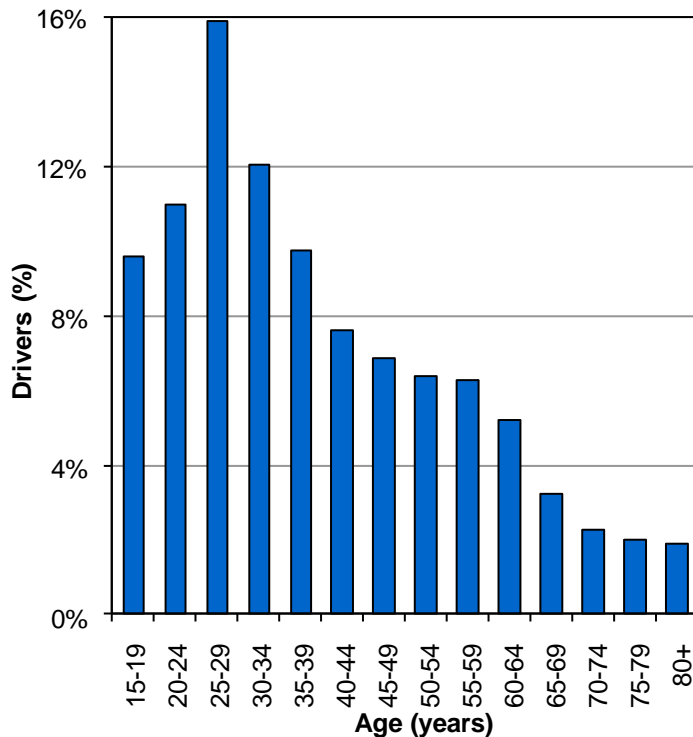
Did you know in 2009:

- 739 bicyclists were hit by motor vehicles; 651 were injured and 5 were killed.
- Utah's bicyclist crash rate per population decreased 9% from 2008.

Bicyclists



Age of Drivers in Bicycle-Motor Vehicle Crashes (Utah 2009)



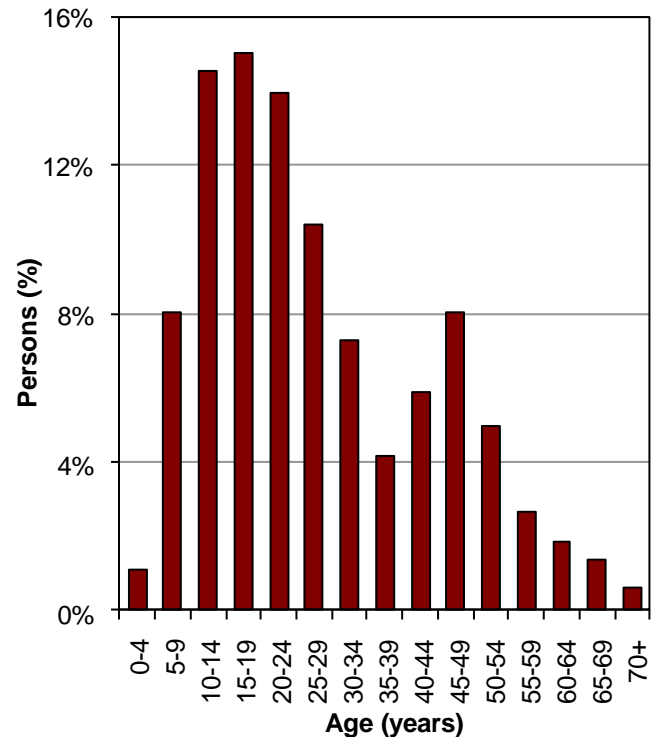
- Over half (58%) of drivers in bicycle-motor vehicle crashes were under 40 years.

Leading Contributing Factors of Drivers in Bicyclist Crashes (Utah 2009)

1. Fail to Yield Right of Way (39%)
2. Hit and Run (7%)
3. Driver Distraction (5%)
4. Improper Turn (4%)
5. Disregard Traffic Signal/Sign (3%)



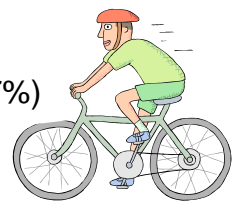
Age of Bicyclists in Bicycle-Motor Vehicle Crashes (Utah 2009)



- Over half (53%) of the bicyclists in crashes were under 25 years of age.

Leading Contributing Factors of Bicyclists in Crashes (Utah 2009)

1. Wrong Side of Road (13%)
 2. Improper Crossing (8%)
 3. Fail to Yield Right of Way (7%)
- 47% of bicyclists had no contributing factor in the crash.

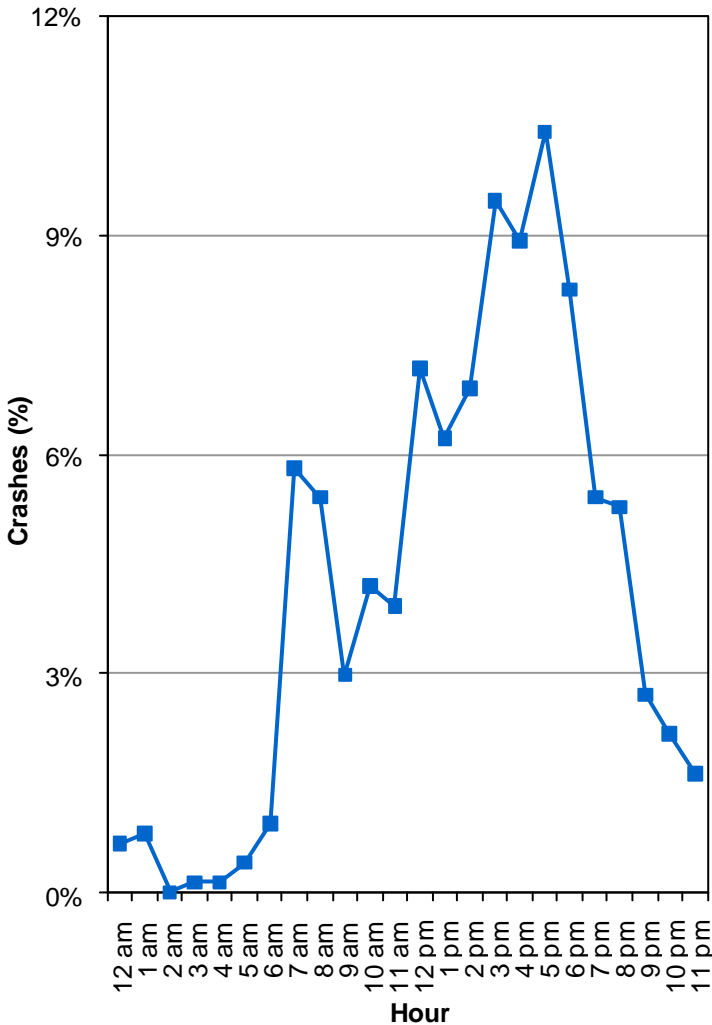


Bicyclists

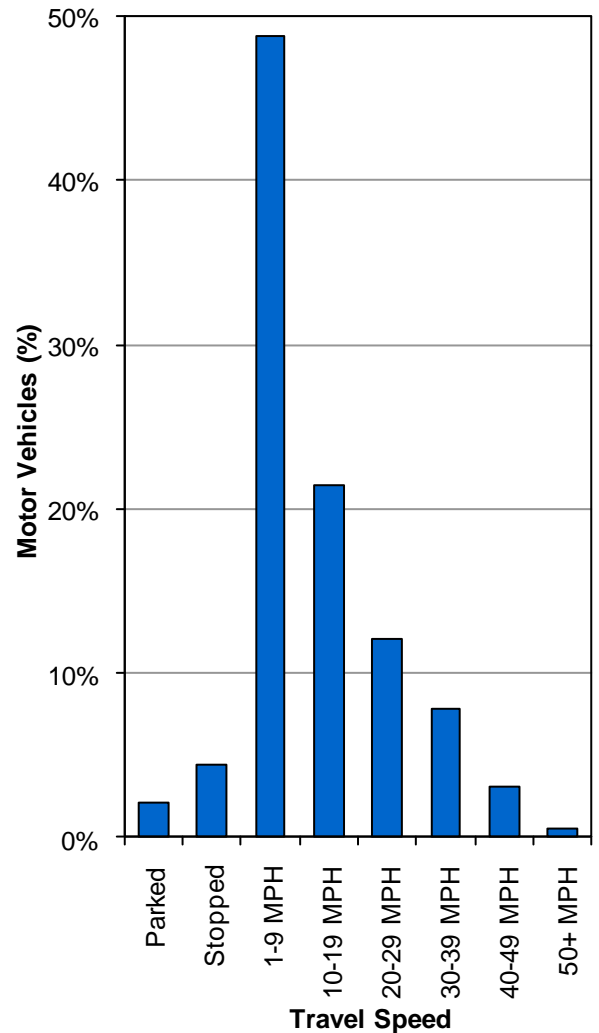


Over one-half (55%) of motor vehicles that hit bicyclists were turning. Drivers need to watch for bicycles before turning.

Bicycle-Motor Vehicle Crashes by Hour (Utah 2009)



Bicycle-Motor Vehicle Crashes by Motor Vehicle Travel Speed (Utah 2009)

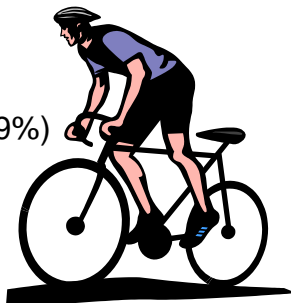


- Bicycle-motor vehicle crashes occurred most often between 3:00 p.m.-6:59 p.m.

- Over two-thirds (70%) of crashes with bicyclists occurred when the motor vehicle was traveling 1-19 MPH.

Location of Bicyclists in Crashes (Utah 2009)

1. Marked Crosswalk (30%)
2. In Roadway (Not at Intersection) (19%)
3. Shoulder (18%)
4. Sidewalk (13%)
5. Unmarked Crosswalk (10%)



Motor Vehicle Action Prior to Crash (Utah 2009)

1. Turning Right (37%)
2. Straight Ahead (36%)
3. Turning Left (17%)
4. Stopped/Slowing (3%)
5. Entering/Leaving Traffic (2%)