

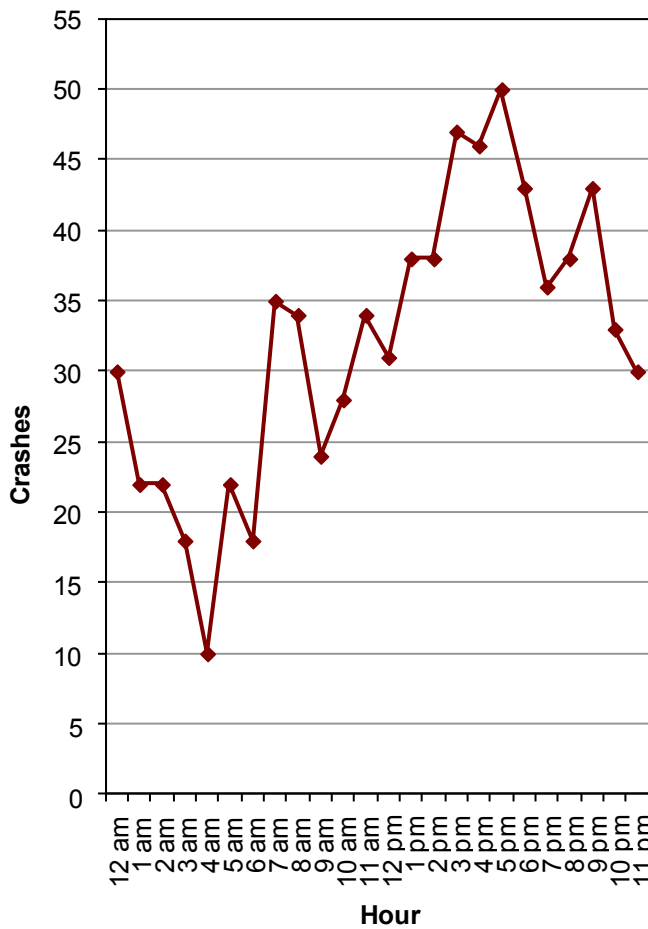
## Did you know in 2013:

- 770 drug-impaired driver crashes occurred in Utah which resulted in 532 injured persons and 53 deaths.
- Drug-impaired driver crashes were 2.8 times more likely to result in an injury or death than other crashes.
- The number of deaths involving a drug positive driver more than doubled the amount of deaths involving a drunk driver (53 deaths compared to 23).

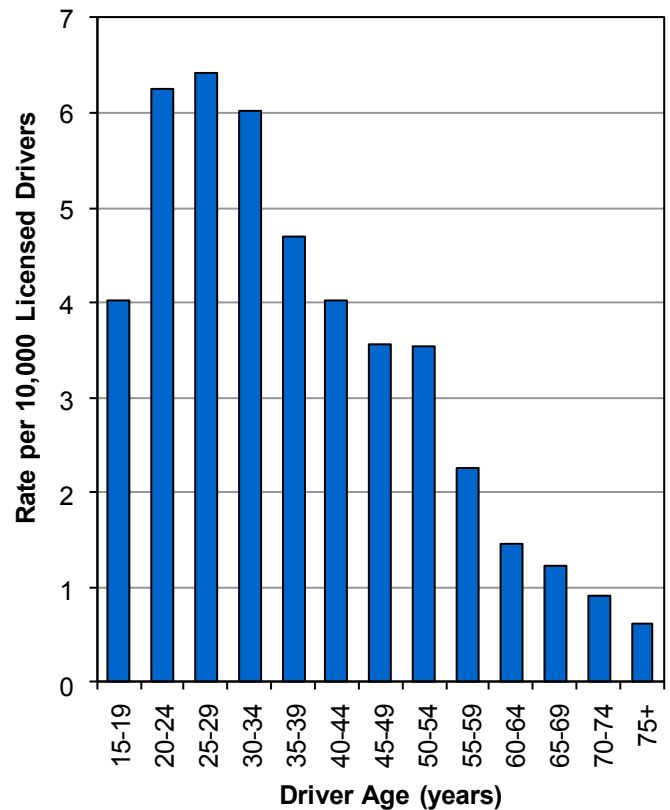
## Drug-Impaired Drivers



### Drug-Impaired Driver Crashes by Hour (Utah 2013)



### Rate of Drug-Impaired Drivers in Crashes per Licensed Driver (Utah 2013)



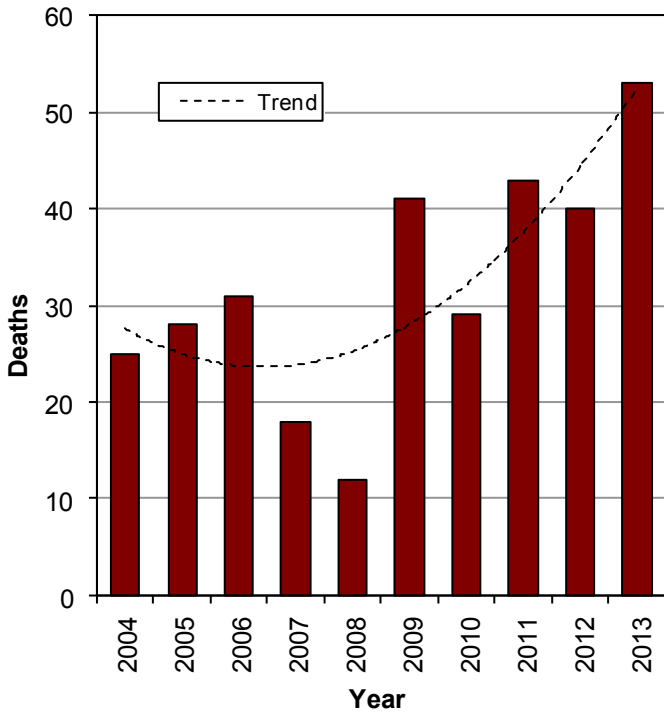
- Drug-impaired driver crashes were highest during the afternoon and evening hours (1:00 p.m.-9:59 p.m.).
- Fatal drug positive driver crashes were highest during the hours of 5 p.m. and 5 a.m.

- Drivers aged 20 to 34 years had the highest rates of drug-impaired crashes.
- Drivers aged 40 to 59 years had the highest rate of drug positive fatal crashes.

## Drug-Impaired Drivers

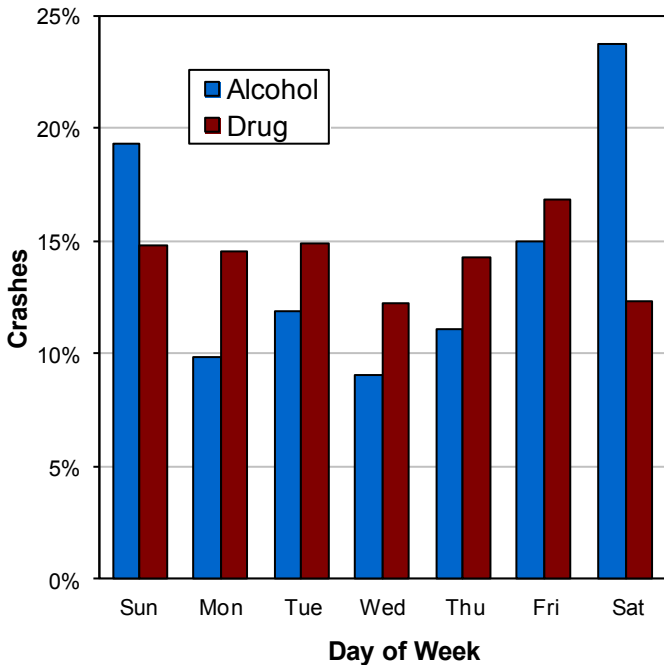


### Deaths Involving Drug Positive Drivers (Utah 2004-2013)



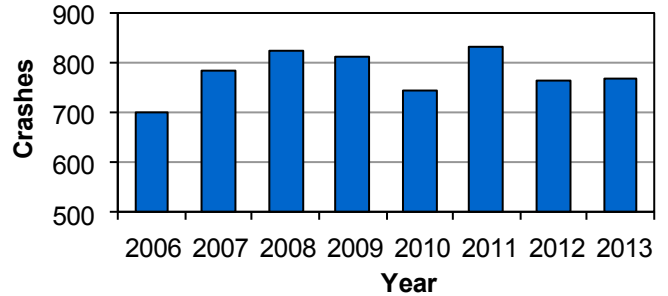
- Utah has averaged 41 deaths a year involving drug positive drivers over the last five years.

### Drug-Impaired vs. Alcohol-Impaired Driver Crashes by Day of the Week (Utah 2013)



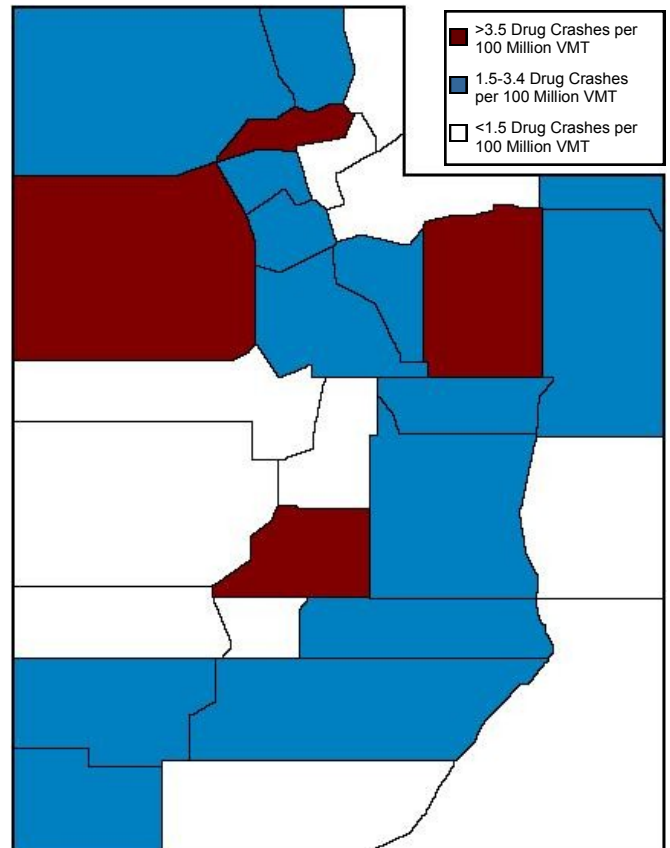
- While alcohol-impaired driver crashes occurred more on weekends, drug impaired driver crashes were spread throughout the week.

### Drug-Impaired Driver Crashes (Utah 2006-2013)



- The number of drug-impaired driver crashes in 2013 was nearly the same as the average for the past eight years (770 vs. average of 779).

### Drug-Impaired Driver Crashes by County (Utah 2013)



- Weber, Duchesne, Sevier, and Tooele Counties had the highest rates of drug-impaired driver crashes per vehicle mile traveled (VMT).