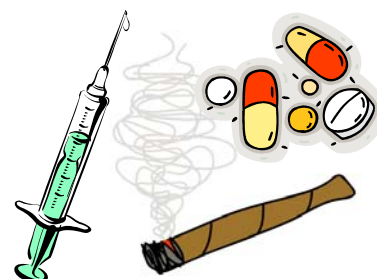


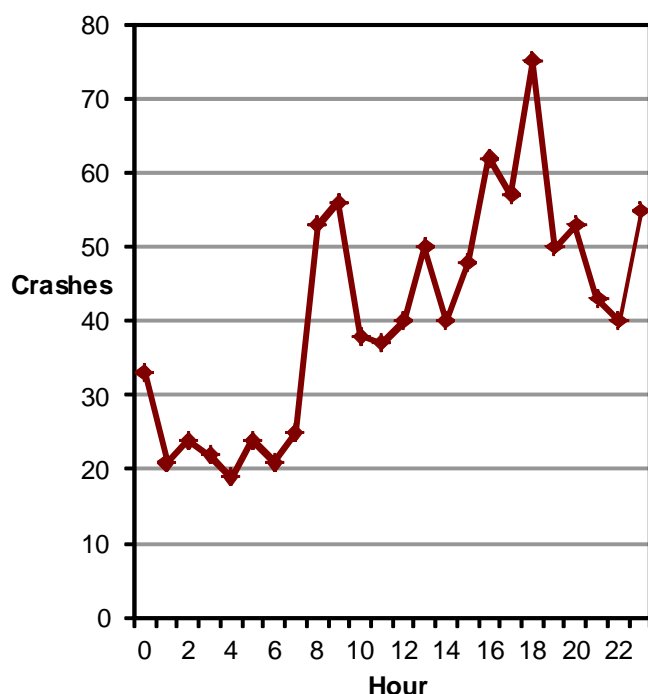
Did you know in 2015:

- 986 drug-related driver crashes occurred in Utah which resulted in 638 injured persons.
- There were 85 deaths involving a drug positive driver.*
- Drug-related driver crashes increased 12% in 2015 from 2014.

Drugs



Drug-Related Driver Crashes by Hour (Utah 2015)

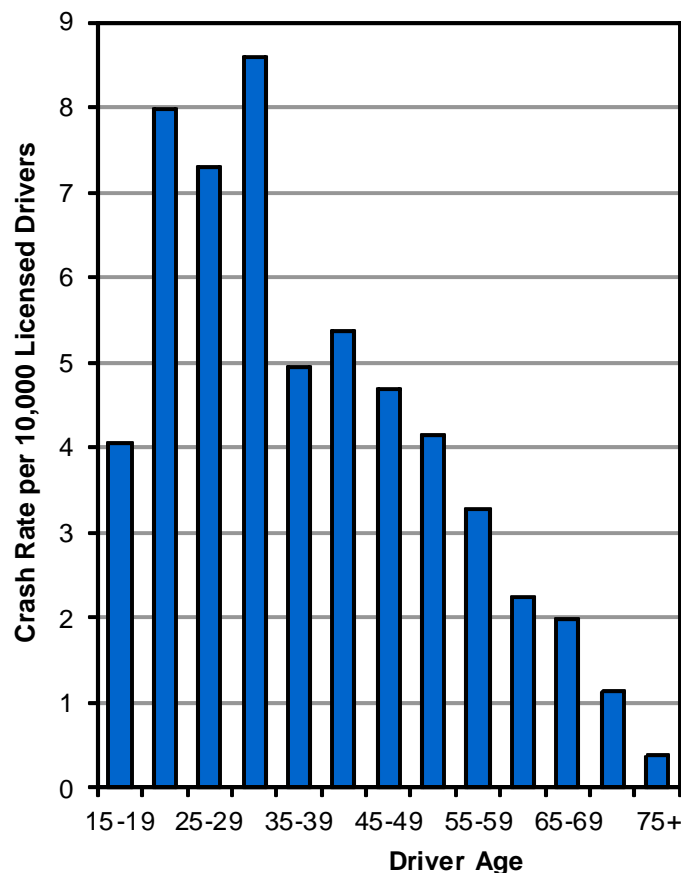


- Drug-related driver crashes were highest during the hours of 4 pm-6:59 pm and 9 am.

*Drug presence does not necessarily imply impairment. For many drug types, drug presence can be detected long after any impairment that might affect driving has passed. Also, whereas the impairment effects for various concentration levels of alcohol is well understood, little evidence is available to link concentrations of other drug types to driver performance.

Note: A non-fatal crash is considered drug-related when the driver was cited for driving under the influence of drugs, at least one driver had a positive drug test, or if the investigating officer suspected the driver used drugs. A drug-positive driver fatal crash is a crash resulting in one or more deaths involving at least one driver with a positive drug test.

Rate of Drug-Related Drivers in Crashes per Licensed Driver (Utah 2015)

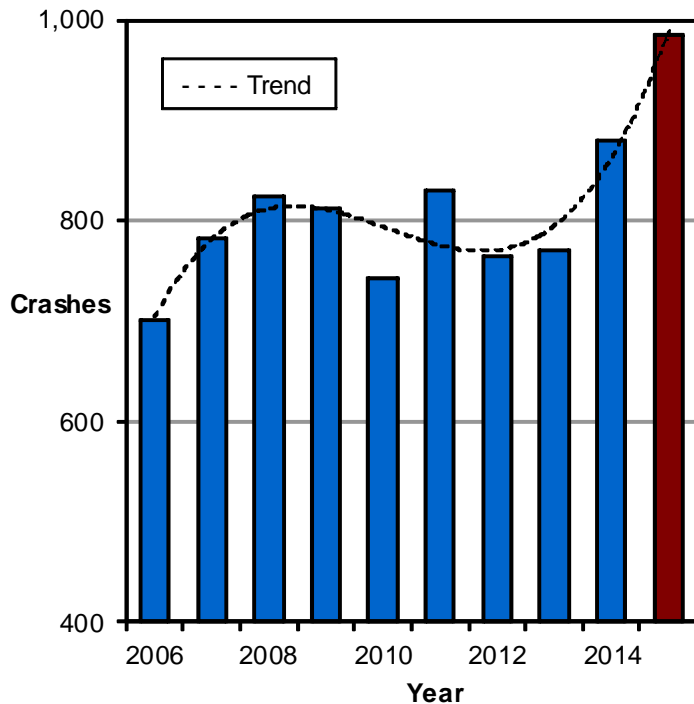


- Drivers aged 20 to 34 years had the highest rates of drug-related crashes.



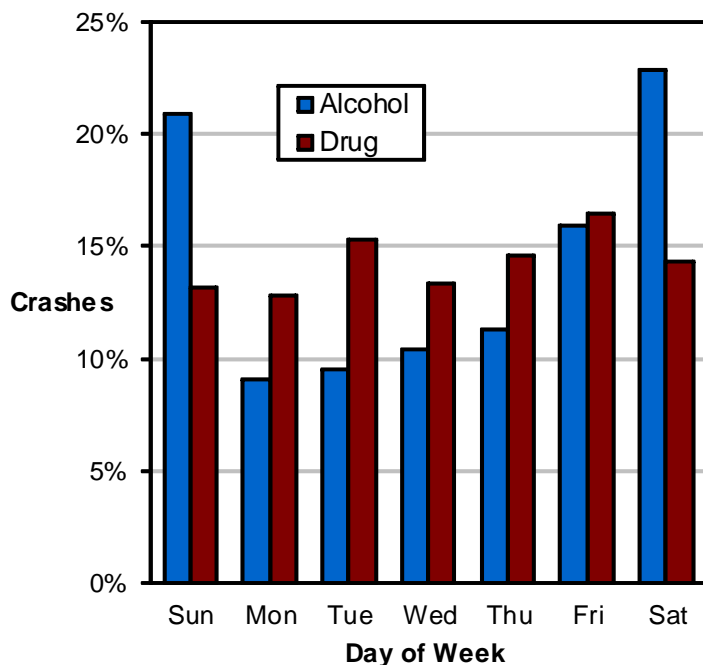
Drugs

Drug-Related Driver Crashes by Year (Utah 2006-2015)



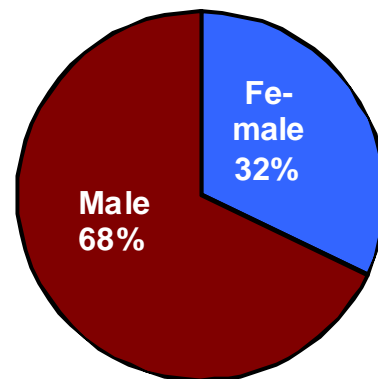
- The number of drug-related driver crashes in 2015 was the highest it has ever been.

Drug-Related vs. Alcohol-Related Driver Crashes by Day of the Week (Utah 2015)



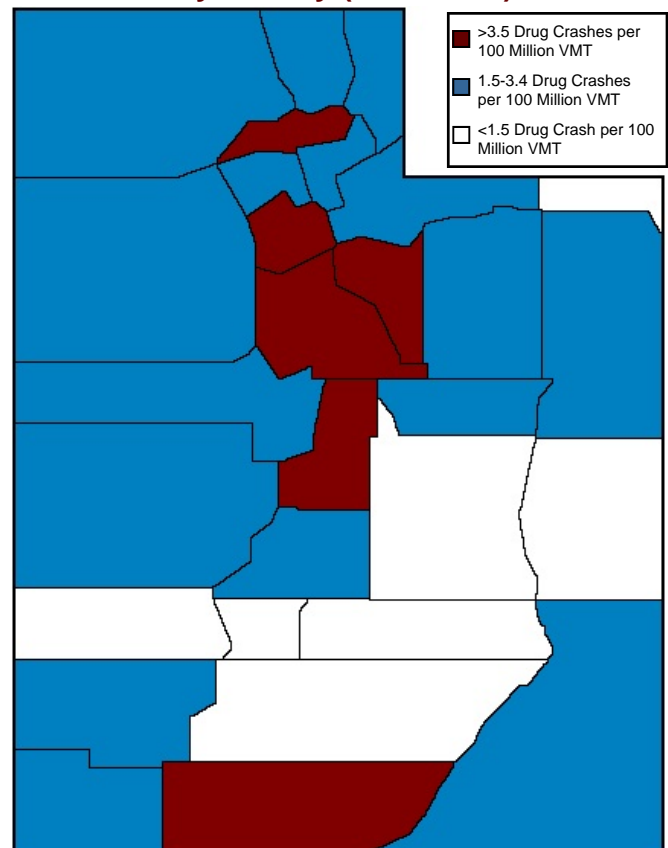
- While alcohol-related driver crashes occurred more on weekends, drug-related driver crashes were spread throughout the week.

Drug-Related Driver Crashes by Driver Gender (Utah 2015)



- There were twice as many male drivers in drug-related crashes than females.

Drug-Related Driver Crashes by County (Utah 2015)



- Weber, Wasatch, and Salt Lake Counties had the highest rates of drug-related driver crashes per vehicle mile traveled (VMT).