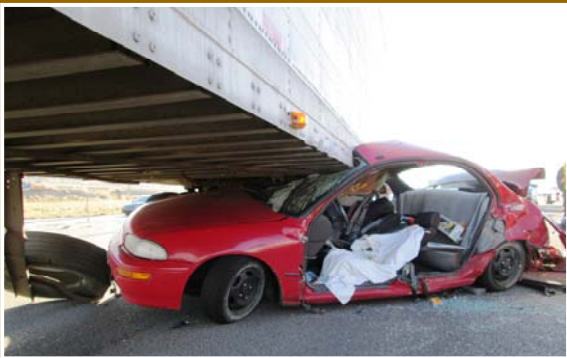


Utah Crash Summary 2015



State of Utah

Department of Public Safety

Utah Crash Summary 2015



Keith D. Squires, Commissioner
Utah Department of Public Safety

Kristy K. Rigby, Director
Highway Safety Office
Utah Department of Public Safety

Gary D. Mower, Traffic Records Program Manager
Highway Safety Office
Utah Department of Public Safety

Table of Contents

Introduction	3
Executive Summary	4
2015 Utah Crash Synopsis	5
2015 Utah Crash Facts	6
Fact Sheets.....	7
Trends.....	31
Section 1: Overview	45
Section 2: Occupant Protection	71
Section 3: Speed	85
Section 4: Alcohol	97
Section 5: Drugs	111
Section 6: Distraction.....	123
Section 7: Drowsy Drivers	131
Section 8: Teenage Drivers	141
Section 9: Older (Age 65+) Drivers.....	151
Section 10: Motorcycles.....	161
Section 11: Pedestrians.....	177
Section 12: Bicyclists	195
Appendix.....	213

Introduction

Purpose: The annual Utah Crash Summary, as specified by Utah Code under Section 41-6a-406, describes the trends and effects of traffic crashes in Utah. The statistics within the Utah Crash Summary describe factors that contribute to the occurrence of motor vehicle deaths, injuries, and crashes. This report is designed to heighten awareness about traffic safety issues and allows interested individuals to identify areas where safety programs may be focused in an effort to reduce traffic-related injuries and deaths.

Crash Data: This crash data comes from traffic crash reports completed by law enforcement officers throughout Utah who investigate crash scenes on public roadways. Information is collected when a crash involves injuries, deaths, or at least \$1,500 property damage.

Fatal Crashes: Additional detailed information is collected on fatal crashes and compiled into the Fatality Analysis Reporting System (FARS). FARS is a national data system collecting data on all fatal traffic crashes in the U.S. FARS was used for the data on fatal crashes.

Fact Sheets: Each section of the crash summary is accompanied by a fact sheet. The fact sheets provide an overview of the section highlighting key points.

Prepared By: The Utah Department of Public Safety, Highway Safety Office prepared this report. For more information, please contact: Gary Mower, Traffic Records Program Manager • Utah Department of Public Safety, Highway Safety Office • 5500 W Amelia Earhart Dr Suite 155 • Salt Lake City, Utah 84116 • (801) 366-6040 • gmower@utah.gov.

Available At: The Utah Crash Summary and fact sheets are available at the Utah Highway Safety Office website at highwaysafety.utah.gov.

Suggested Citation: Utah Department of Public Safety, Highway Safety Office. *Utah Crash Summary 2015*. Salt Lake City, UT: Utah Department of Public Safety, 2016.

Executive Summary

Significant progress has been made to reduce motor vehicle crashes in Utah, with a rapid decline in the injury and fatal crash rates over the last 40 years. If Utah had the same fatal crash rate in 2015 as 1975 there would have been 736 additional deaths in 2015. These reductions can be attributed to a variety of factors, including:

- Traffic safety programs that have increased public awareness of traffic safety issues;
- Aggressive media and enforcement programs targeting driver behavior;
- Legislation targeting restraint use, graduated driver licensing, and impaired driving;
- Improved safety of motor vehicles and engineering of roadways;
- Advancements in emergency response and treatment.

The personal and socioeconomic effect of motor vehicle crashes is a continuing concern in the State of Utah. In 2015, there were 60,012 reported traffic crashes on public roadways in Utah. These crashes involved 151,237 people, with 25,350 injured and 278 people killed.

Utah made progress in the following areas over the last few years:

- The Utah death rate per vehicle mile traveled has been below the U.S. rate since 2001;
- The percent of crashes involving a teen driver has a decreasing trend;
- The motorcyclist crash rate per registered motorcycle has shown a decreasing trend;
- The number of bicyclists in crashes in 2015 decreased for the third straight year.

As improvements are made and progress continues, traffic safety needs to remain a top priority. Some areas of concern in Utah include:

- Traffic deaths were the highest total in Utah since 2007;
- The number of injured persons in crashes increased for the fifth straight year;
- There were 5,976 more traffic crashes in 2015 compared to 2014;
- Speed remains the leading contributing factor in deaths;
- Pedestrian deaths in 2015 were the highest since 1987;
- Drowsy driving crashes were the highest since 2007;
- The number of deaths in 2015 involving a distracted-driver was the highest since 2007;
- The number of deaths to unrestrained occupants was the highest total since 2009;
- Deaths involving a drunk driver have shown an increasing trend;
- The percent of crashes involving an older driver has shown an increasing trend;
- The number of crashes involving a drug-related driver in 2015 was the highest on record.

The *Utah Crash Summary 2015* contains further details regarding Utah motor vehicle crashes.

Users of this Crash Summary are invited to help promote motor vehicle safety in Utah. The numbers represent lost lives, injured people, and lives changed. Utah has set a goal of zero deaths because the loss of even one life is too many. This is a goal we can all live with.

2015 Utah Crash Synopsis

All Crashes				
Category	2015	% of Total*	3 Year Avg (2012-2014)	% Change
Total Persons in Crashes	151,237		131,618	14.9%
Drivers	108,312	71.6%	93,421	15.9%
Follow ed Too Closely Crash	42,043	27.8%	35,116	19.7%
Passengers	41,199	27.2%	36,440	13.1%
Teenage Driver Crash	35,224	23.3%	29,892	17.8%
Failed to Yield Crash	31,475	20.8%	27,484	14.5%
Speed Crash	25,845	17.1%	22,871	13.0%
Injured Persons	25,350	16.8%	22,813	11.1%
Inclement Weather Crash	24,368	16.1%	23,248	4.8%
Older (Age 65+) Driver Crash	21,362	14.1%	18,216	17.3%
Distracted Driving Crash	16,451	10.9%	14,110	16.6%
Disregard Traffic Signal/Sign	10,190	6.7%	8,463	20.4%
Heavy Truck Crash	9,857	6.5%	7,834	25.8%
Animal-Related Crash	5,074	3.4%	4,427	14.6%
Alcohol-Related Driver Crash	4,303	2.8%	3,832	12.3%
Unrestrained Occupants	2,728	1.8%	2,989	-8.7%
Drow sy Driving Crash	2,194	1.5%	1,871	17.2%
Drug-Related Driver Crash	2,088	1.4%	1,531	36.4%
Motorcyclists	1,217	0.8%	1,283	-5.1%
Pedestrians	1,040	0.7%	943	10.3%
Bicyclists	686	0.5%	814	-15.8%
Deaths	278	0.2%	231	20.3%
Total Crashes	60,012		53,424	12.3%
Urban	50,253	83.7%	44,376	13.2%
Property Damage Only	42,089	70.1%	37,108	13.4%
Injury	17,665	29.4%	16,108	9.7%
Follow ed Too Closely	13,382	22.3%	11,248	19.0%
Teenage Driver	12,395	20.7%	10,568	17.3%
Failed to Yield	10,914	18.2%	9,502	14.9%
Speed	10,507	17.5%	9,482	10.8%
Inclement Weather	10,436	17.4%	10,248	1.8%
Rural	9,759	16.3%	9,048	7.9%
Older (Age 65+) Driver	7,813	13.0%	6,753	15.7%
Distracted Driving	5,850	9.7%	5,172	13.1%
Heavy Truck	3,803	6.3%	3,228	17.8%
Animal-Related	3,381	5.6%	2,939	15.0%
Disregard Traffic Signal/Sign	3,308	5.5%	2,777	19.1%
Alcohol-Related Driver	2,021	3.4%	1,864	8.4%
Drow sy Driving	1,178	2.0%	1,027	14.7%
Motorcycle	1,116	1.9%	1,159	-3.7%
Drug-Related Driver Crash	986	1.6%	805	22.5%
Pedestrian-Motor Vehicle	965	1.6%	872	10.7%
Bicycle-Motor Vehicle	670	1.1%	804	-16.7%
Fatal	258	0.4%	208	24.0%

Fatal Crashes				
Category	2015	% of Total*	3 Year Avg (2012-2014)	% Change
Deaths	278		231	20.3%
Drivers	171	61.5%	142	20.7%
Speed Crash	104	37.4%	96	8.3%
Unrestrained Occupants	87	31.3%	71	23.1%
Drug Positive Driver Crash	85	30.6%	47	80.9%
Older (Age 65+) Driver Crash	59	21.2%	43	37.2%
Passengers	53	19.1%	51	4.6%
Pedestrians	49	17.6%	33	50.0%
Heavy Truck Crash	42	15.1%	21	103.2%
Drunk Driver Crash	37	13.3%	29	26.1%
Motorcyclists	36	12.9%	36	0.0%
Inclement Weather Crash	34	12.2%	22	54.5%
Teenage Driver Crash	30	10.8%	29	2.3%
Failed to Yield Crash	30	10.8%	27	12.5%
Distracted Driving Crash	28	10.1%	20	42.4%
Red Light/Stop Sign Running	18	6.5%	16	12.5%
Drow sy Driving Crash	15	5.4%	12	28.6%
Follow ed Too Closely Crash	10	3.6%	10	3.4%
Bicyclists	5	1.8%	6	-16.7%
Animal-Related Crash	1	0.4%	2	-50.0%
Fatal Crashes	258		208	24.0%
Urban	160	62.0%	125	28.3%
Rural	98	38.0%	83	17.6%
Speed	95	36.8%	86	10.9%
Drug Positive Driver	75	29.1%	41	82.9%
Older (Age 65+) Driver	57	22.1%	39	47.4%
Pedestrian-Motor Vehicle	49	19.0%	32	53.1%
Motorcycle	36	14.0%	35	2.9%
Heavy Truck	35	13.6%	19	84.2%
Inclement Weather	33	12.8%	19	70.7%
Drunk Driver	31	12.0%	26	17.7%
Teenage Driver	27	10.5%	27	1.3%
Failed to Yield	27	10.5%	25	8.0%
Distracted Driving	27	10.5%	18	52.8%
Red Light/Stop Sign Running	18	7.0%	15	17.4%
Drow sy Driving	14	5.4%	10	35.5%
Follow ed Too Closely	8	3.1%	9	-14.3%
Bicycle-Motor Vehicle	5	1.9%	6	-11.8%
Animal-Related	1	0.4%	2	-40.0%

* NOTE: Groups overlap and do not total 100%.

2015 Utah Crash Facts

- In an average day in Utah, there were 164 motor vehicle crashes involving 415 people with 69 people injured and 0.8 person killed.
- First motor vehicle crash occurred January 1, 2015 at 12:23 a.m. and the last crash occurred December 31, 2015 at 11:44 p.m.
- First fatal motor vehicle crash occurred January 2, 2015 at 2:56 p.m. and the last fatal crash occurred December 30, 2015 at 5:27 p.m.
- Monday, December 14, 2015 had the most crashes with 639 crashes and Sunday, January 18, 2015 had the fewest crashes with 55.
- 107 lives were estimated to be saved at current seat belt use rates. (National Highway Traffic Safety Administration)
- It is estimated that 53 additional lives would have been saved if everyone had been wearing seat belts.
- A motor vehicle crash occurred every 8 minutes.
- A person was injured in a crash every 20 minutes.
- A teenage-driver crash occurred every 42 minutes.
- A speed-related crash occurred every 50 minutes.
- A driver age 65 years or older was in a crash every 67 minutes.
- A distracted driver crash occurred every 89 minutes.
- A heavy truck was in a crash every 2 hours.
- An animal-motor vehicle crash occurred every 2.5 hours.
- An alcohol-related driver crash occurred every 4 hours.
- A motorcyclist was in a crash every 7 hours.
- A drowsy driver crash occurred every 7 hours.
- A pedestrian was hit by a motor vehicle every 8 hours.
- A drug-related driver crash occurred every 8.5 hours.
- A bicyclist was hit by a motor vehicle every 12.5 hours.
- A person died in a crash every 31.5 hours.
- The youngest person in a motor vehicle crash was less than a week old and the oldest person was 99 years-old.
- The youngest person killed in a motor vehicle crash was 1 year-old and the oldest person killed was 93 years-old.
- The estimated statewide economic loss due to motor vehicle crashes in Utah was \$2.1 billion. (National Highway Traffic Safety Administration)
- Hospital and emergency department charges for the treatment of injuries in motor vehicle crashes were \$157 million. [Utah Department of Health (UDOH), 2014]
- 5.5% of licensed drivers were in a crash.
- 5.0% of Utah residents were in a crash.
- 5.0% of registered vehicles were in a crash.
- 1.6% of deaths in Utah involved a motor vehicle crash. (UDOH)
- 0.2% of people in a crash died.
- A person was in a crash every 194,000 miles driven in Utah.

