

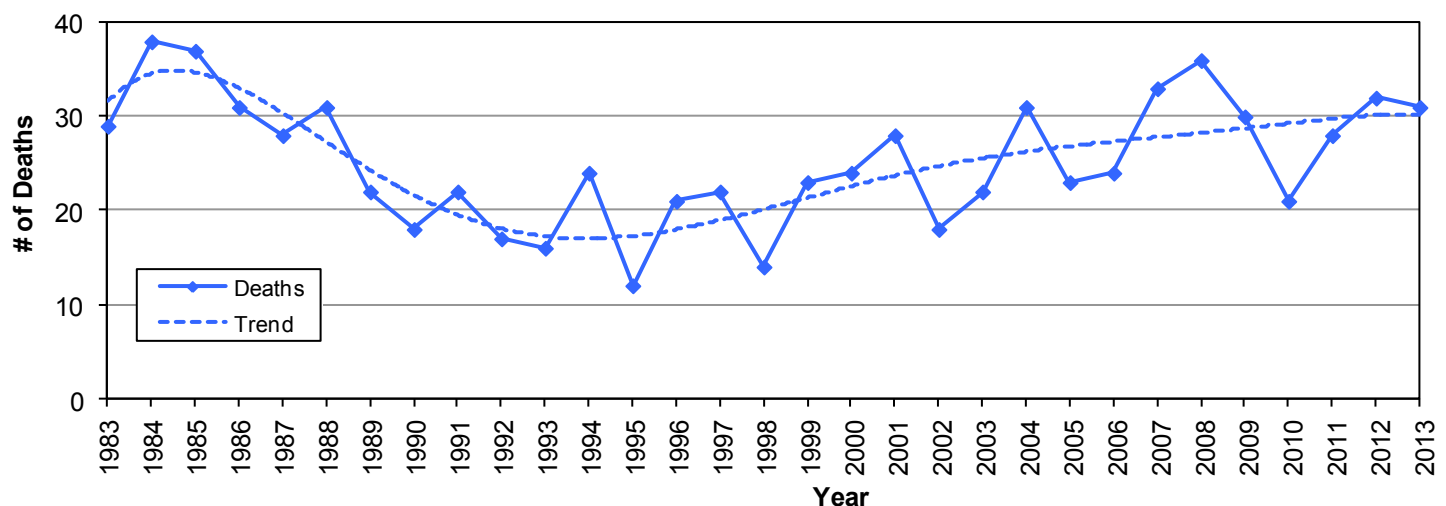
Did you know in 2013:

- There were 1,069 motorcycle crashes in Utah, resulting in 951 injured motorcyclists and 31 motorcyclist deaths.
- Motorcyclists accounted for 1% of persons in crashes and 14% of deaths.
- Motorcycle crashes were 9.1 times more likely to result in a death than other crashes.

Motorcycles

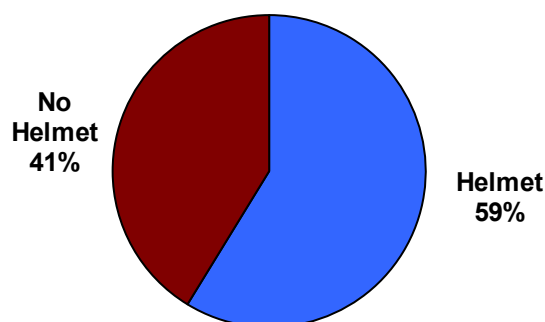


Motorcyclist Deaths (Utah 1983-2013)



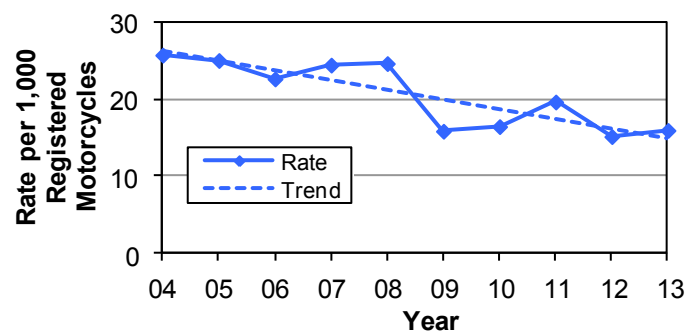
- Motorcyclist deaths have been on the rise since the 1990s.
- The 36 motorcyclist deaths in 2008 were the highest total since 1985.

Helmet Use of Motorcyclists in Crashes (Utah 2013)



- Only 59% of motorcyclists wore a helmet.
- Utah law requires anyone under the age of 18 years riding a motorcycle to wear a helmet.

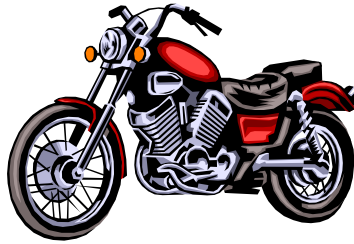
Motorcyclist Crash Rates per Registered Motorcycles (Utah 2004-2013)



- The rate of motorcyclists in crashes per registered motorcycles decreased 38% from 2004.

Leading Motorcyclist Contributing Factors in Crashes (Utah 2013)

1. Speed Too Fast (14%)
2. Followed Too Closely (9%)
3. Failed to Keep in Proper Lane (9%)
4. Swerved or Evasive Action (7%)
5. Ran Off Road (6%)



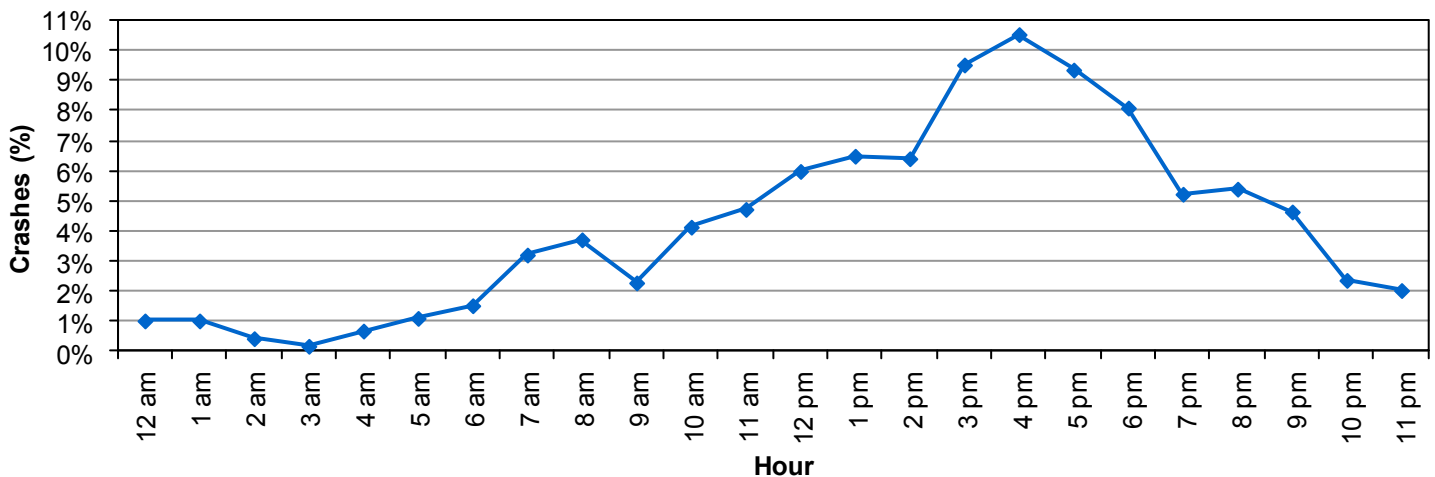
Motorcycles



Left Turns

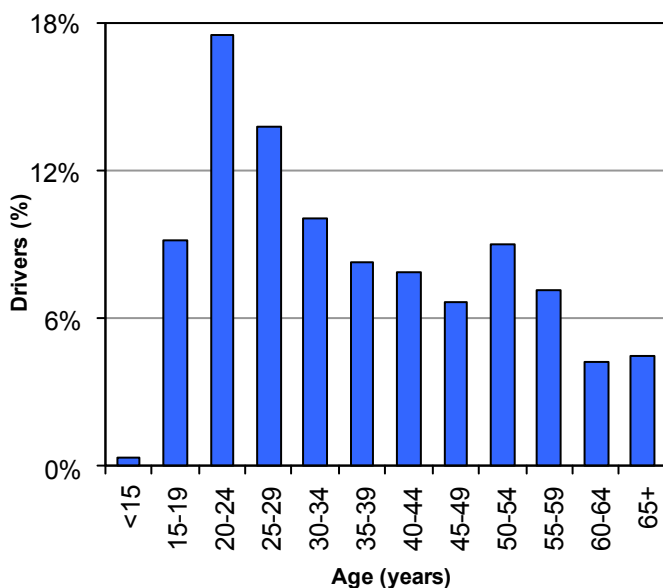
Nearly one-third (31%) of drivers who hit motorcycles were turning left. Drivers need to watch for motorcycles before turning.

Motorcyclists In Crashes by Hour of Day (Utah 2013)



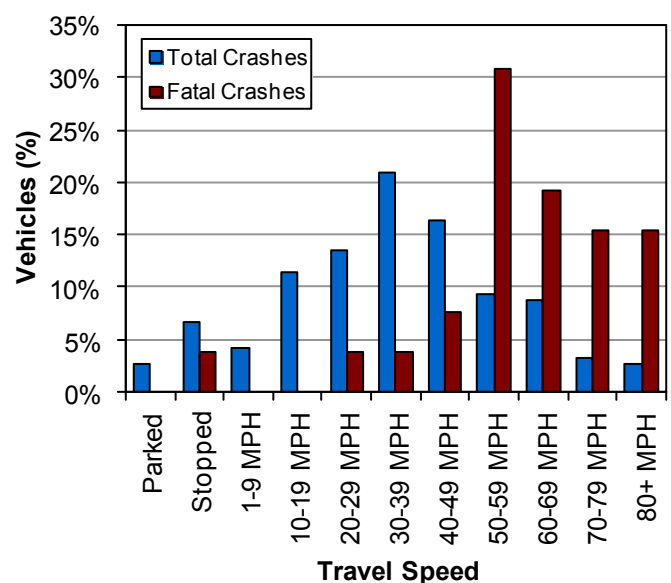
- Over one-half (56%) of motorcycle crashes occurred between 12:00 p.m. and 6:59 p.m.

Age of Motorcycle Drivers in All Crashes (Utah 2013)



- Over one-half (51%) of motorcycle drivers in crashes were under the age of 35 years.

Travel Speed of Motorcycles in Crashes (Utah 2013)



- Most (81%) of the motorcycles in fatal crashes were traveling 50 MPH or higher.