

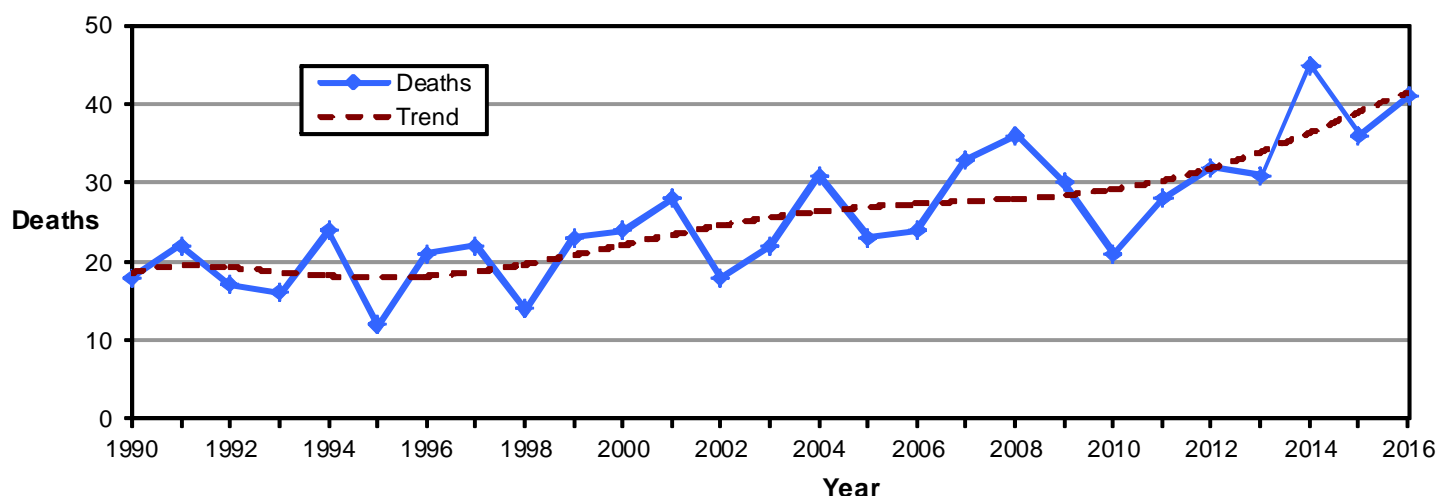
Did you know in 2016:

- There were 1,168 motorcycle crashes in Utah, resulting in 1,014 injured motorcyclists and 41 motorcyclist deaths.
- Motorcyclists accounted for 1% of persons in crashes and 15% of deaths.
- Motorcycle crashes were 9.9 times more likely to result in a death than other crashes.

Motorcycles

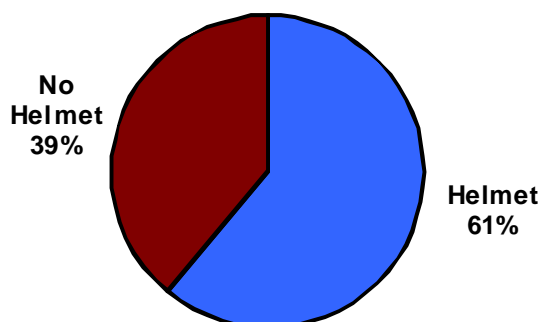


Motorcyclist Deaths (Utah 1990-2016)



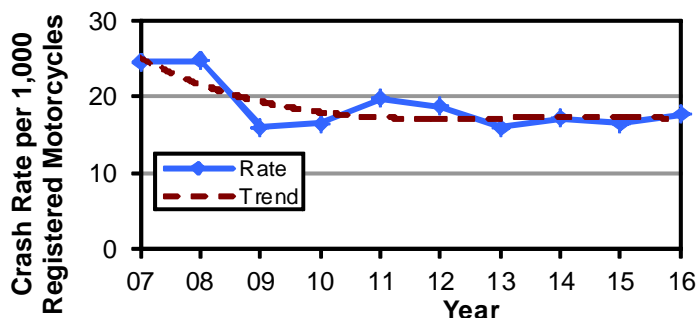
- Motorcyclist deaths have been on the rise since the 1990s.
- The 45 motorcyclist deaths in 2014 were the highest total on record in Utah.

Helmet Use of Motorcyclists in Crashes (Utah 2016)



- Only 61% of motorcyclists wore a helmet.
- Utah law requires anyone under the age of 18 years riding a motorcycle to wear a helmet.

Motorcyclist Crash Rates per Registered Motorcycles (Utah 2007-2016)

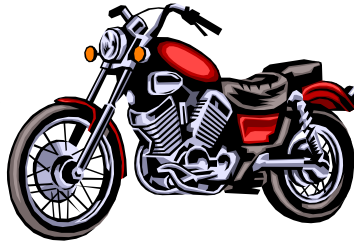


- The rate of motorcyclists in crashes per registered motorcycles decreased 28% from 2007.



Leading Motorcyclist Contributing Factors in Crashes (Utah 2016)

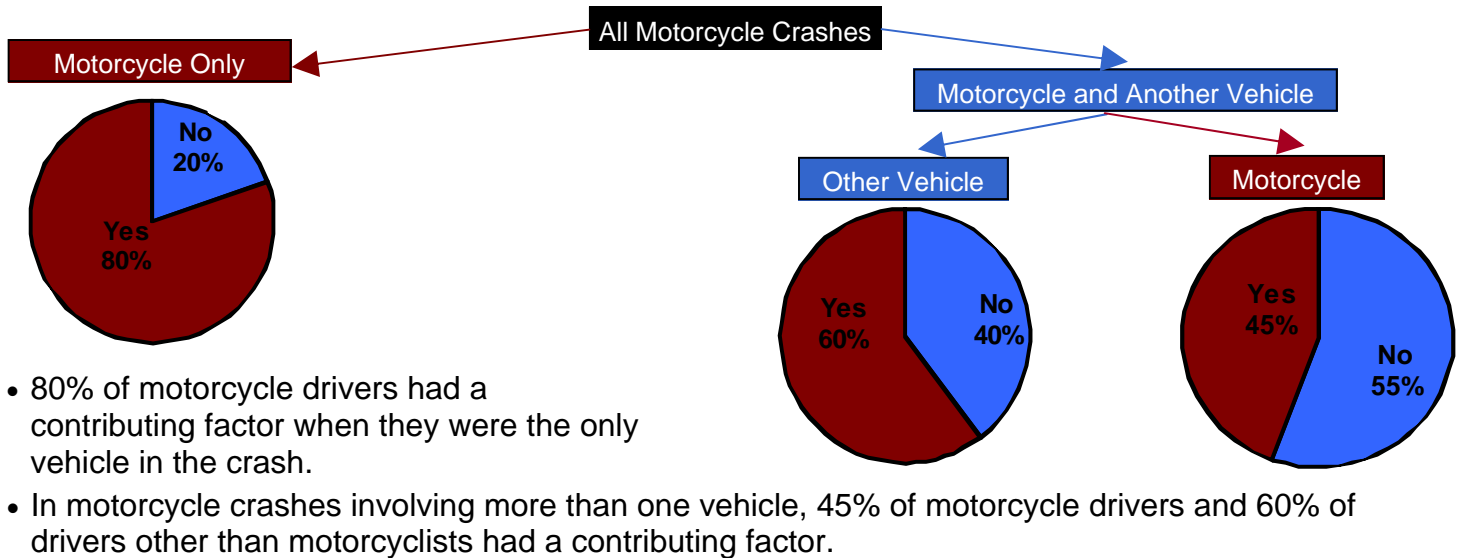
1. Speed Too Fast (11%)
2. Followed Too Closely (10%)
3. Failed to Keep in Proper Lane (7%)
4. Ran Off Road (6%)
5. Swerved or Evasive Action (5%)



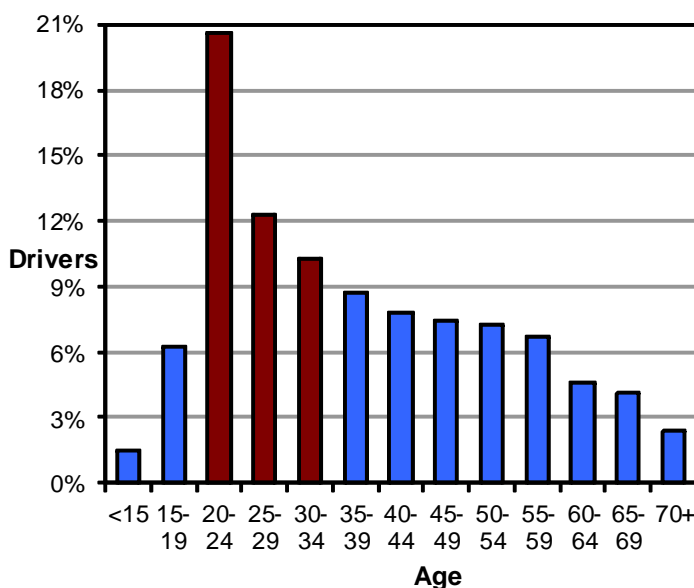
Left Turns

Nearly one-third (28%) of drivers who hit motorcycles were turning left. Drivers need to watch for motorcycles before turning.

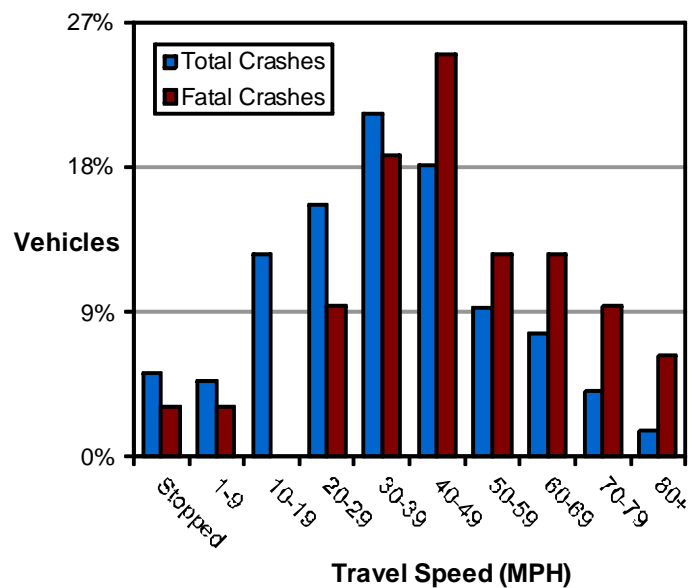
Contributing Factor Summary in Motorcycle Crashes (Utah 2016)



Age of Motorcycle Drivers in All Crashes (Utah 2016)



Travel Speed of Motorcycles in Crashes (Utah 2016)



- Over one-half (51%) of motorcycle drivers in crashes were under the age of 35 years.

- 40 MPH or higher is when the travel speed of motorcycles becomes increasingly deadly.