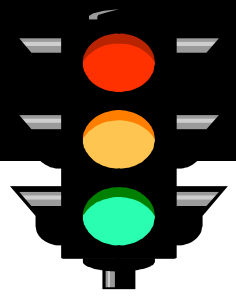
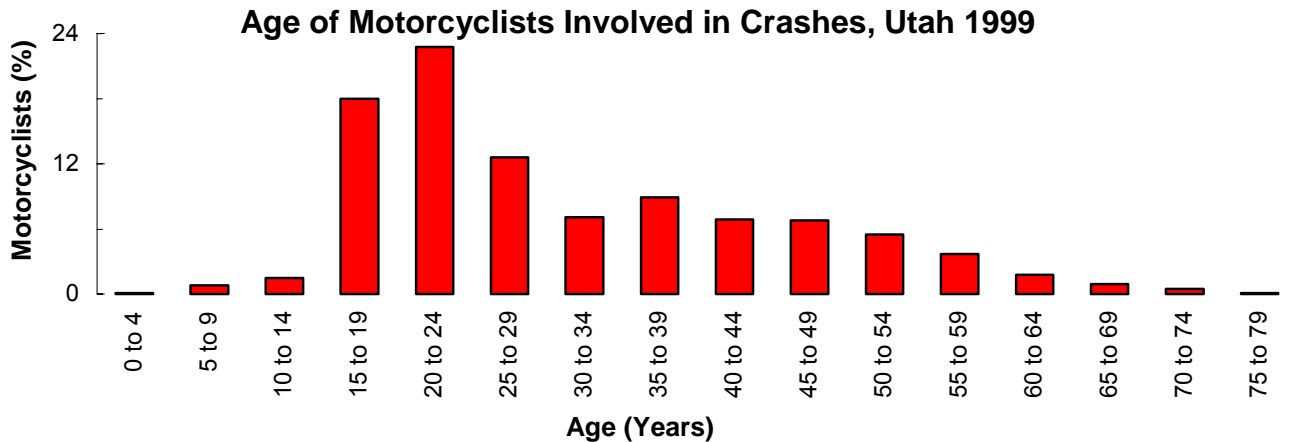


MOTORCYCLES



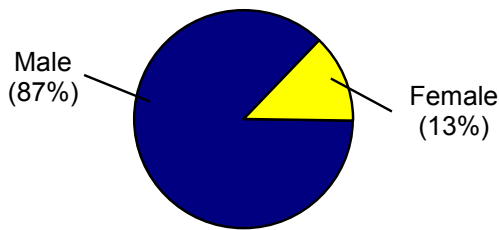
Did you know that in 1999. . .

- ◆ There were 678 total motorcycle crashes in Utah, 602 motorcycle injury crashes, and 24 fatal motorcycle crashes.
- ◆ The number of total motorcycle crashes increased 15.1% from 1998, and the number of motorcycle injury crashes increased 18.3%.
- ◆ Nearly all of the motorcycle crashes resulted in an injury (92.3%) compared to 37.6% of all motor vehicle crashes.
- ◆ Fatalities were 10 times higher for motorcyclists than for other motor vehicle crash participants.



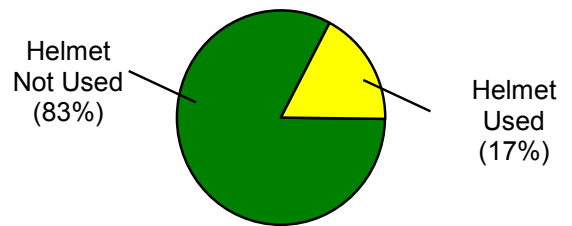
- Over one-half (55.8%) of the motorcyclists involved in crashes were under the age of 30 years.
- Motorcyclists aged 20 to 24 years were involved in the highest percentage of crashes.

Gender of Motorcyclists Involved in Crashes, Utah 1999



- Most motorcyclists involved in crashes were male (87%).
- The high percentage of male motorcyclists involved in crashes does not necessarily indicate that male motorcyclists are at greater risk for a crash, but may reflect the higher proportion of motorcycle users who are male.

Helmet Use of Motorcyclists Killed in a Crash, Utah 1999



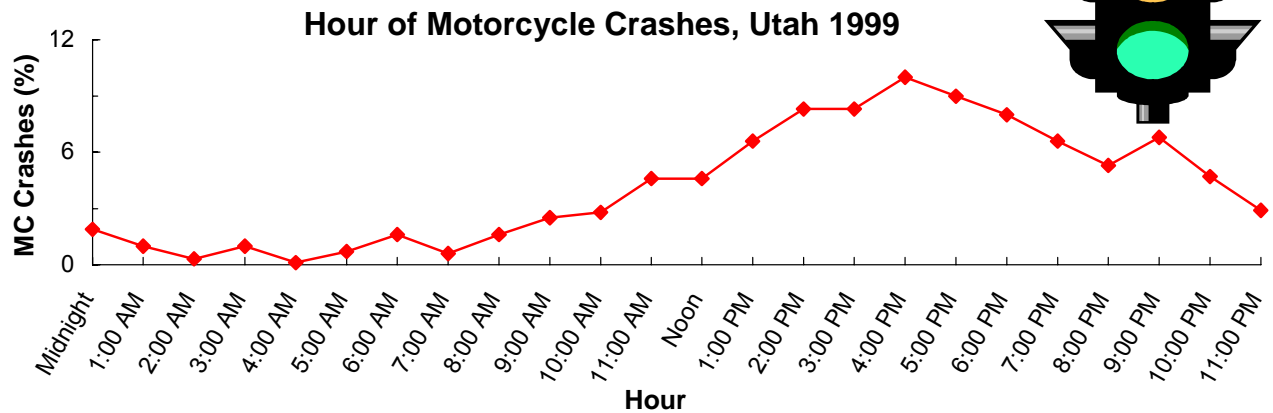
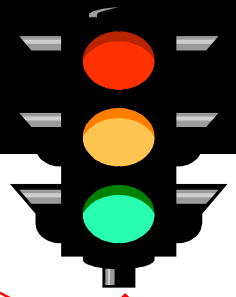
- The majority of the motorcyclists killed in a crash were not wearing a helmet (83%).
- Overall, only 29.6% of motorcyclists involved in crashes wore a helmet.
- Utah law states that anyone under the age of 18 years riding a motorcycle either as the driver or as a passenger must wear a helmet approved by the Department of Public Safety.

Leading Motorcycle Crash Violations, Utah 1999

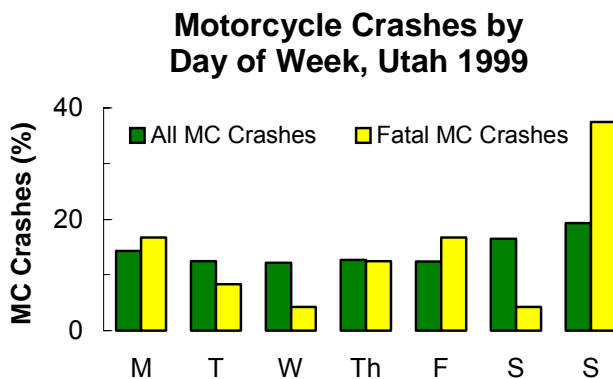
1. All other non-moving violations (25.1%)
2. Reckless driving (11.8%)
3. All other moving violations (11.4%)
4. Speeding (11.0%)
5. Improper lookout (10.2%)

Over one-third (37.0%) of the motorcycle drivers involved in crashes received a citation. In addition, driving under the influence represented 8.6% of the violations cited to motorcycle drivers involved in a crash.

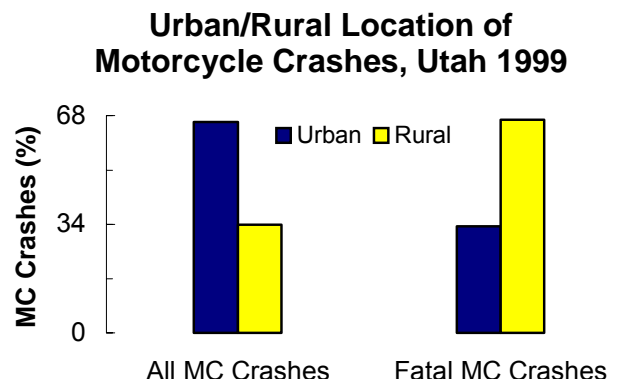
MOTORCYCLES



- The highest percentage of motorcycle crashes occurred between 4 pm and 5 pm.



- Over one-third (35.8%) of all motorcycle crashes occurred on Saturday and Sunday.
- Fatal motorcycle crashes occurred most frequently on Sunday (37.5%).
- Motorcycle crashes occurring on Sunday were 3 times more likely to be fatal than motorcycle crashes occurring on other days.



- The majority of all motorcycle crashes (66.1%) occurred in urban areas.
- The largest percentage of fatal motorcycle crashes (66.7%) occurred in rural areas.
- Motorcycle crashes in rural areas were 4 times more likely to result in a fatality than motorcycle crashes in other areas.

Leading Contributing Factors Involved in Motorcycle Crashes, Utah 1999

All Motorcycle Crashes

1. Speed too fast (28.0%)
2. Other improper driving (22.4%)
3. Improper lookout (13.9%)
4. Driving under the influence of alcohol and drugs, and had been drinking (6.2%)
5. Failed to yield the right of way (4.0%)
6. Following too closely (4.0%)

Fatal Motorcycle Crashes

1. Speed too fast (42.3%)
2. Other improper driving (26.9%)
3. Driving under the influence of alcohol and drugs, and had been drinking (7.7%)
4. Improper lookout (3.8%)
5. Fatigued (3.8%)
6. Drove left of center (3.8%)

- Speeding too fast accounted for approximately one-quarter (28.%) of the contributing factors involved in all motorcycle crashes.
- Speeding too fast accounted for almost one-half (42.3%) of the contributing factors involved in fatal motorcycle crashes.