

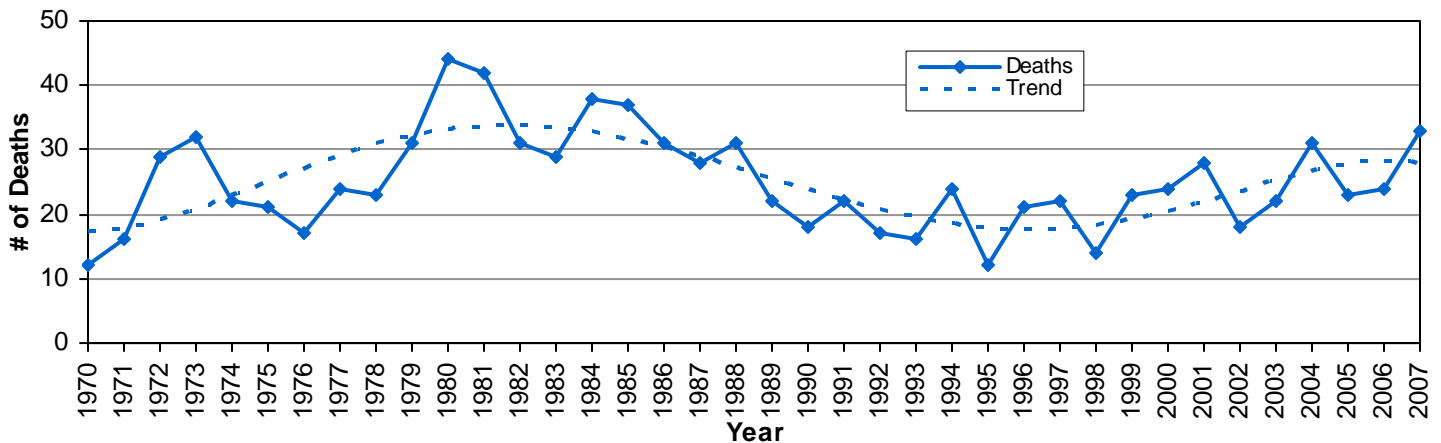
Motorcycles



Did you know in 2007:

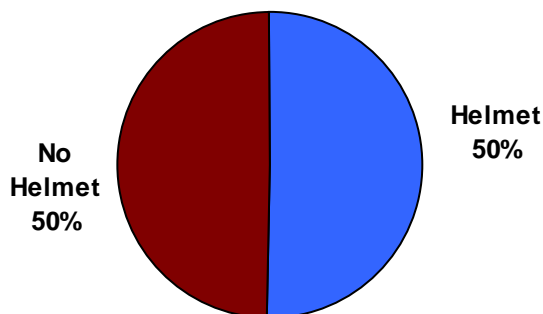
- There were 1,215 motorcycle crashes in Utah, resulting in 1,077 injured motorcyclists and 33 motorcyclist deaths.
- Motorcyclists accounted for 0.9% of persons in crashes and 11.0% of deaths.
- Compared to 2006, there was a 20% increase in the motorcyclist death rate per registered motorcycle.
- Motorcycle crashes were 7 times more likely to result in a death than other crashes.

Motorcyclist Deaths (Utah 1970-2007)



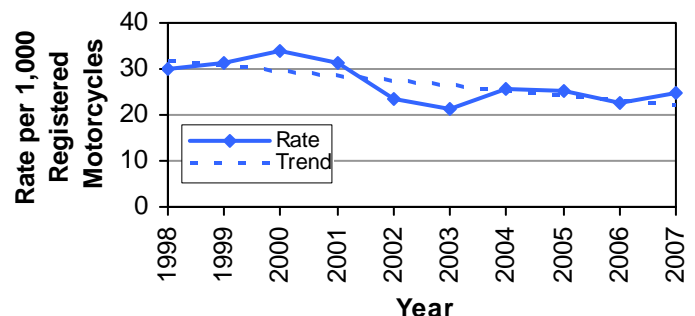
- Motorcyclist deaths are on the rise after seeing declining motorcyclist deaths in the 1990s.
- The 33 motorcyclist deaths in 2007 were the highest total since 1985.

Helmet Use of Motorcyclists in Crashes (Utah 2007)



- Only 50% of motorcyclists wore a helmet.
- Utah law requires anyone under the age of 18 years riding a motorcycle to wear a helmet.

Motorcyclist Crash Rates per Registered Motorcycles (Utah 1998-2007)



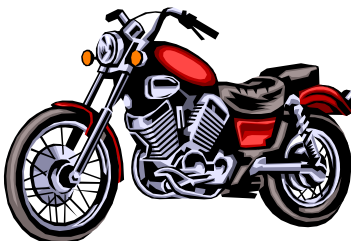
- The rate of motorcyclists in crashes per registered motorcycles increased in 2007 after two years of decreases.

**Leading Motorcyclist
Contributing Factors in Crashes
(Utah 2007)**

Motorcycles

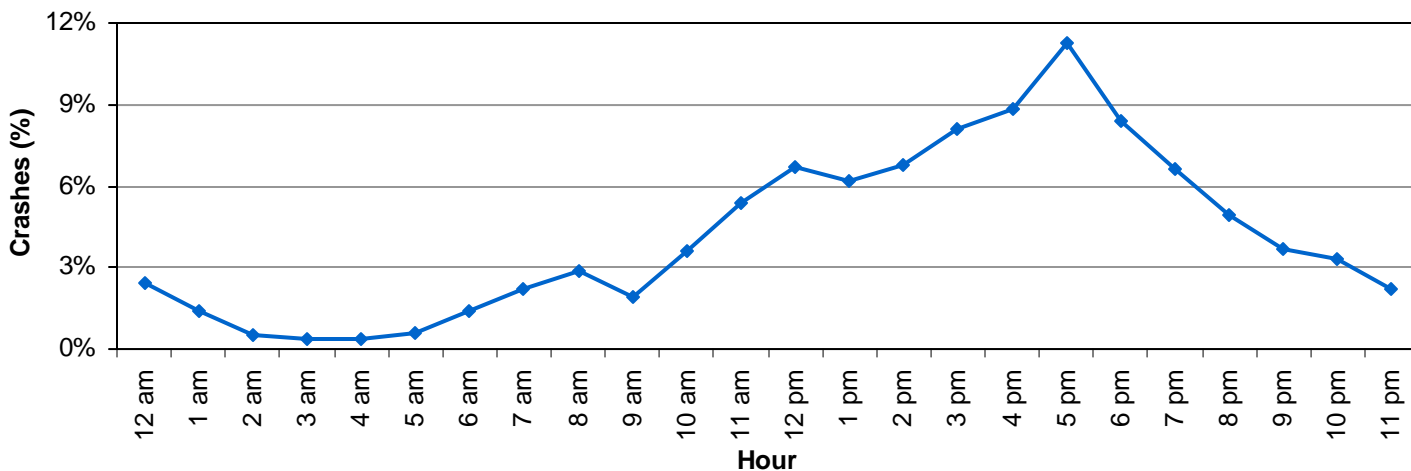


1. Speed Too Fast (13%)
2. Followed Too Closely (8%)
3. Swerved or Evasive Action (6%)
4. Failed to Keep in Proper Lane (5%)
5. Ran Off Road (5%)



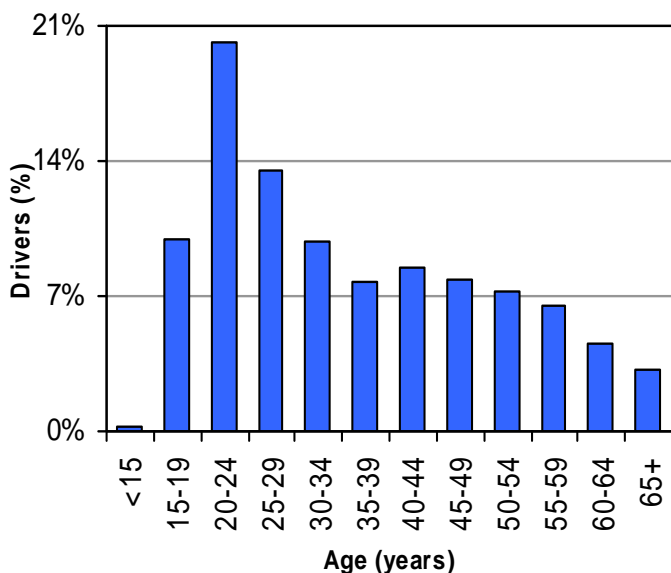
Left Turns
 Nearly one-third (29%) of drivers who hit motorcycles were turning left. Drivers need to watch for motorcycles before turning.

Motorcycle Crashes by Hour of Day (Utah 2007)

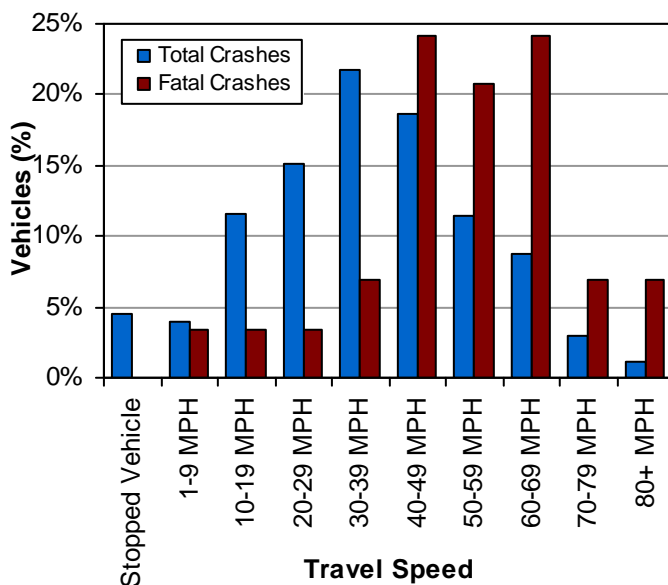


- Nearly two-thirds (63%) of total motorcycle crashes occurred between 12:00 p.m. and 7:59 p.m.

**Age of Motorcycle Drivers in All Crashes
(Utah 2007)**



**Travel Speed of Motorcycles in Crashes
(Utah 2007)**



- Over one-half (54%) of motorcycle drivers in crashes were under the age of 35 years.
- Most (83%) of the motorcycles in fatal crashes were traveling 40 MPH or higher.