

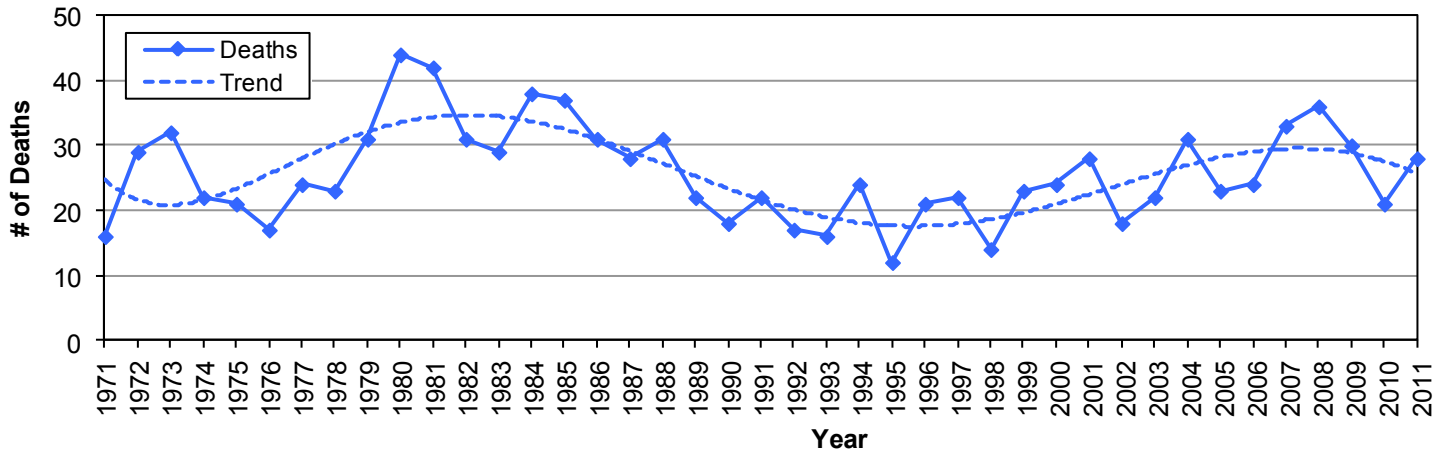
## Motorcycles



### Did you know in 2011:

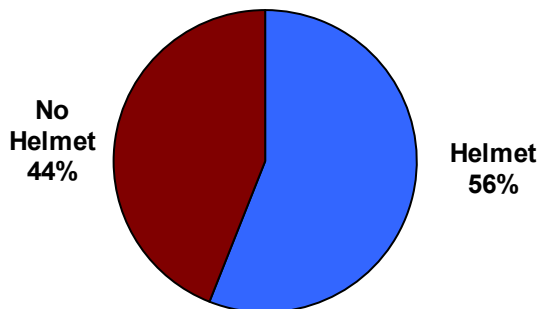
- There were 1,226 motorcycle crashes in Utah, resulting in 1,117 injured motorcyclists and 28 motorcyclist deaths.
- Motorcyclists accounted for 1% of persons in crashes and 12% of deaths.
- Compared to 2010, there was a 15% increase in the number of motorcyclists in crashes.
- Motorcycle crashes were 5.8 times more likely to result in a death than other crashes.

### Motorcyclist Deaths (Utah 1971-2011)



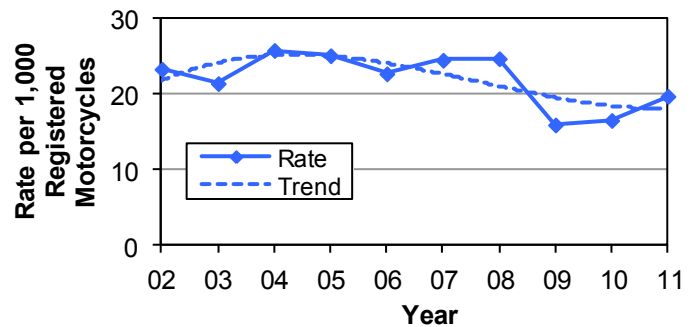
- Motorcyclist deaths increased in 2011 after declining the previous two years.
- The 36 motorcyclist deaths in 2008 were the highest total since 1985.

### Helmet Use of Motorcyclists in Crashes (Utah 2011)



- Only 56% of motorcyclists wore a helmet.
- Utah law requires anyone under the age of 18 years riding a motorcycle to wear a helmet.

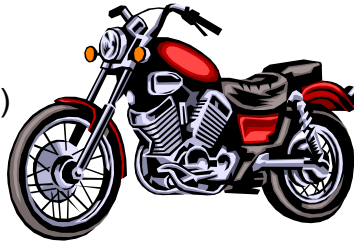
### Motorcyclist Crash Rates per Registered Motorcycles (Utah 2002-2011)



- The rate of motorcyclists in crashes per registered motorcycles increased 19% from 2010.

**Leading Motorcyclist  
Contributing Factors in Crashes  
(Utah 2011)**

1. Speed Too Fast (13%)
2. Followed Too Closely (11%)
3. Failed to Keep in Proper Lane (10%)
4. Swerved or Evasive Action (8%)
5. Ran Off Road (6%)



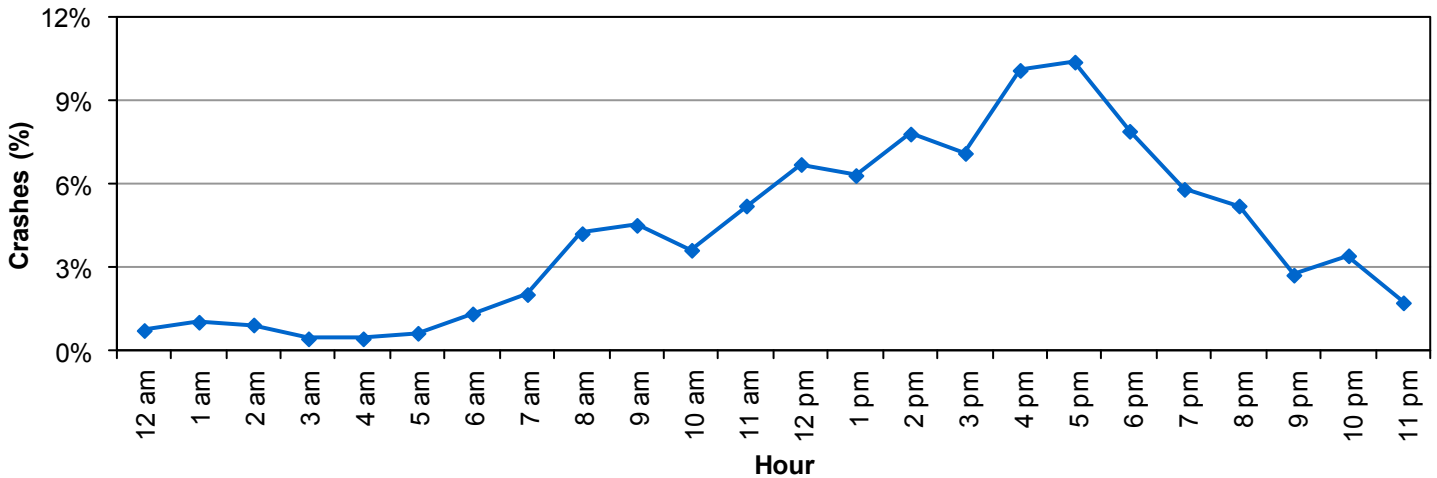
# Motorcycles



**Left Turns**

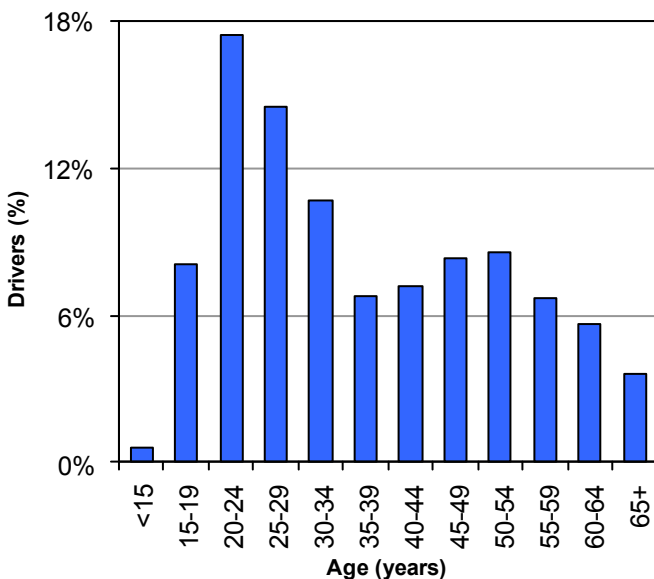
Over one-fourth (27%) of drivers who hit motorcycles were turning left. Drivers need to watch for motorcycles before turning.

**Motorcyclists In Crashes by Hour of Day (Utah 2011)**



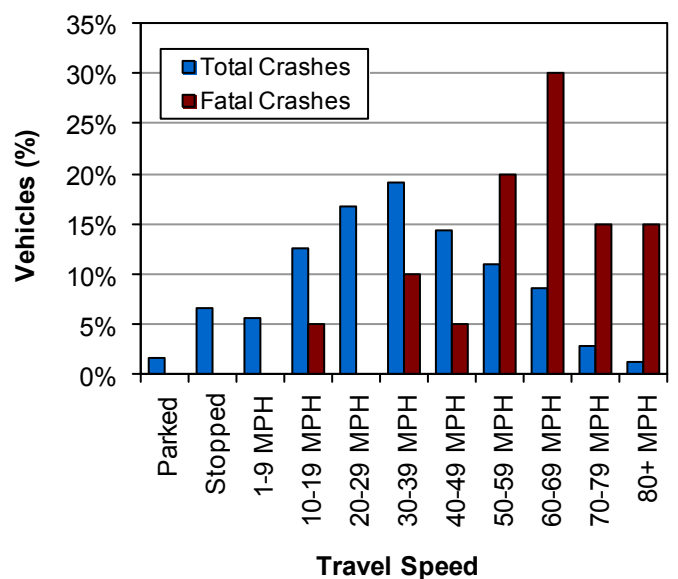
- Over one-half (56%) of motorcycle crashes occurred between 12:00 p.m. and 6:59 p.m.

**Age of Motorcycle Drivers in All Crashes  
(Utah 2011)**



- Over one-half (51%) of motorcycle drivers in crashes were under the age of 35 years.

**Travel Speed of Motorcycles in Crashes  
(Utah 2011)**



- Most (80%) of the motorcycles in fatal crashes were traveling 50 MPH or higher.