

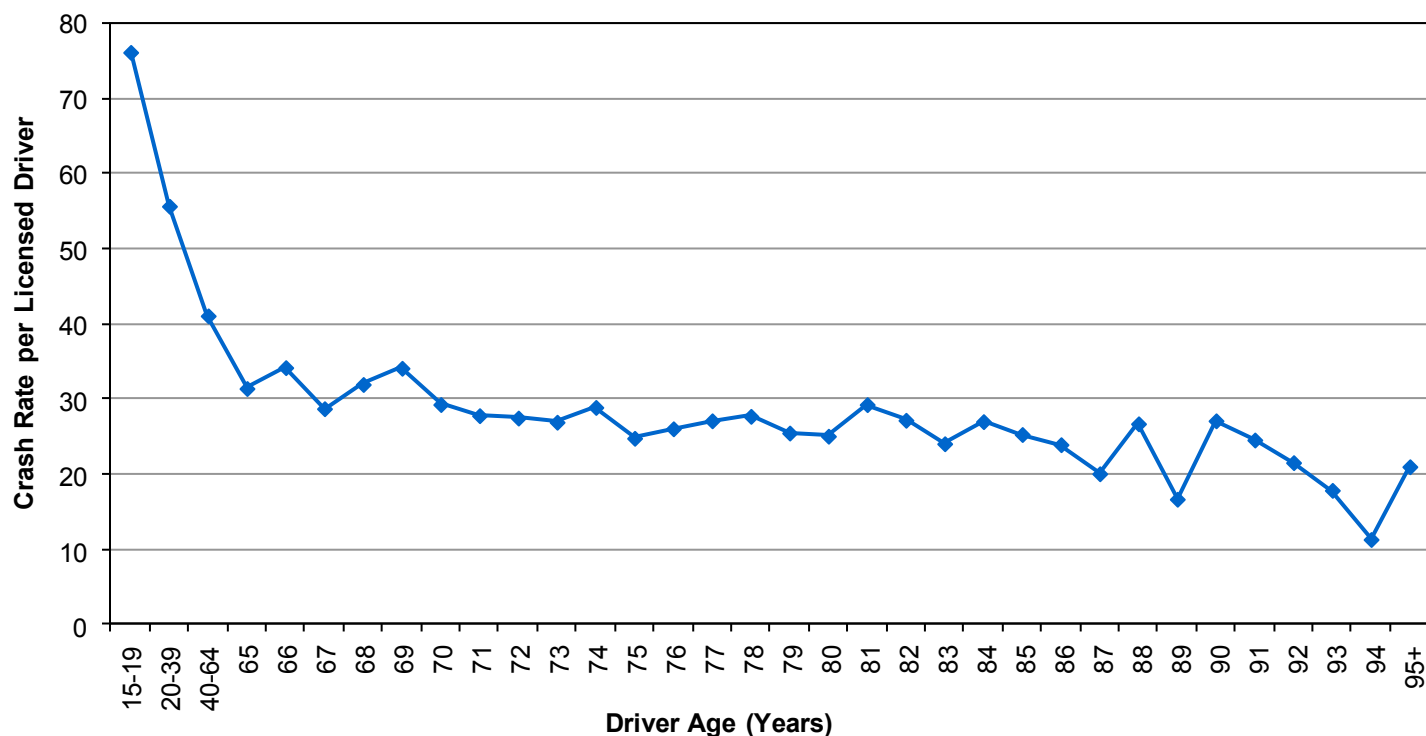
Did you know in 2013:

- Older drivers had the lowest crash rate per licensed driver.
- Older drivers were in 6,855 motor vehicle crashes which resulted in 3,271 injured persons and 54 deaths.
- Although older drivers have the lowest crash rates of any drivers, the percent of crashes involving an older driver has been increasing for over a decade.
- Seniors represented 7% of people in a crash and 21% of the deaths.

Older Drivers (Age 65+)



Crash Rates per Licensed Driver by Age (Utah 2013)



- The older the driver the less likely they were in a crash per licensed driver.

Leading Contributing Factors of Older Driver Crashes Compared to All Drivers (Utah 2013)

All Drivers in Crashes

1. Followed Too Closely (21%)
2. Failed to Yield Right of Way (18%)
3. Speed Too Fast (17%)
4. Failed to Keep in Proper Lane (13%)
5. Driver Distraction (9%)

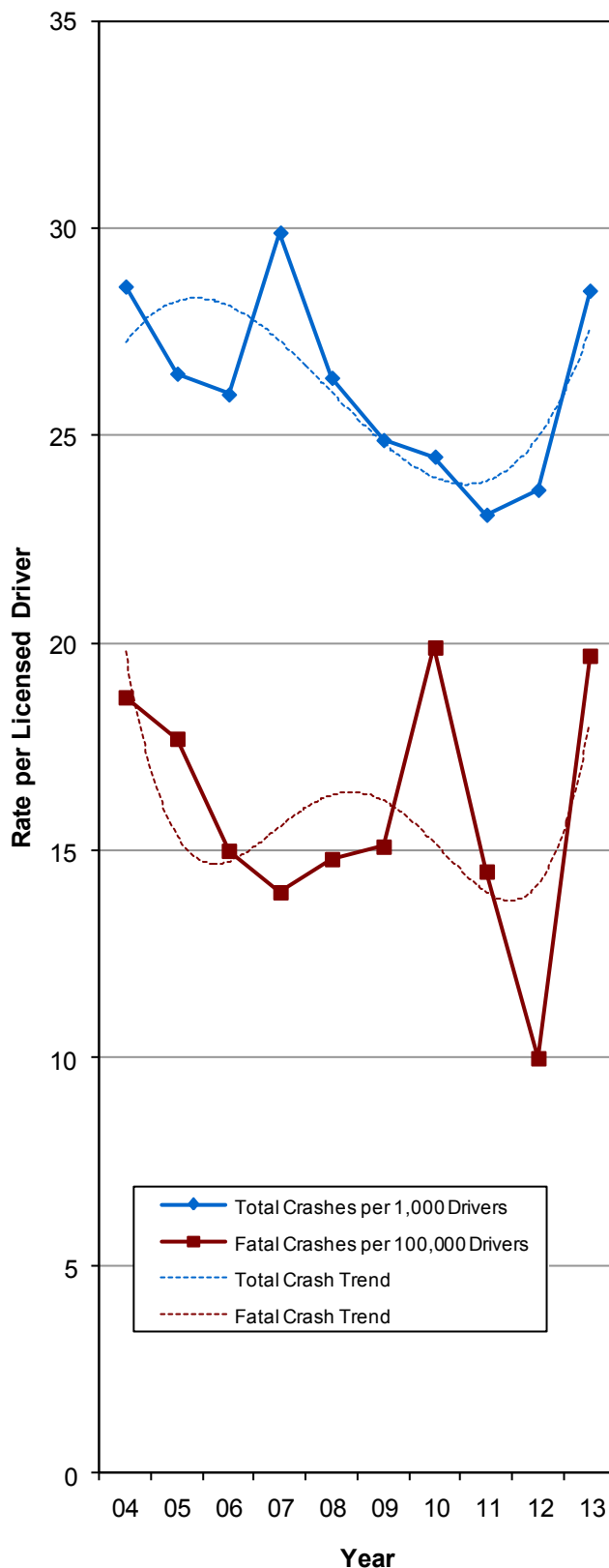
Older Driver Crashes

1. Failed to Yield Right of Way (17%)
2. Followed Too Closely (9%)
3. Failed to Keep in Proper Lane (7%)
4. Disregard Traffic Signal/Sign (5%)
5. Improper Turn (5%)

- Older drivers were less likely to have a contributing factor than other drivers in a crash.

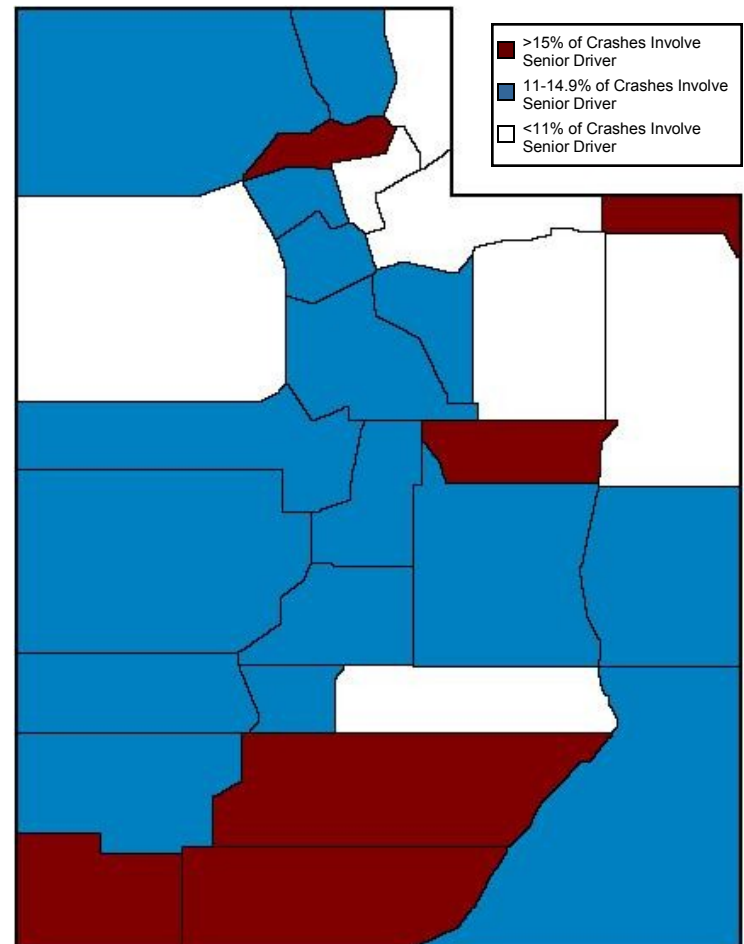
Older Driver Crash Trend (Utah 2004-2013)

Older Drivers (Age 65+)



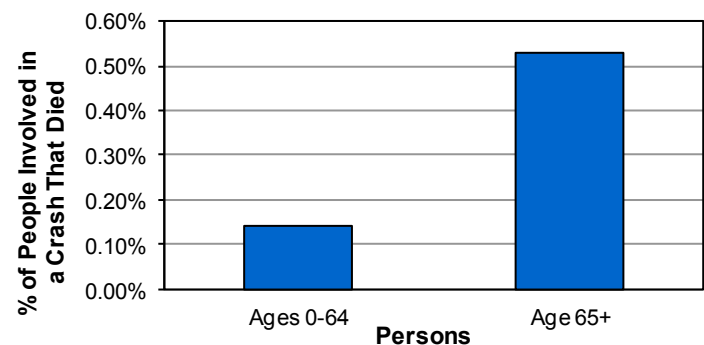
- The older driver crash rate per licensed driver increased 20% in 2013 from 2012.

Older Driver Crashes by County (Utah 2013)



- Daggett, Washington, and Kane counties had the highest percent of crashes that involved an older driver.

Injury Severity by Age (Utah 2013)



- People age 65+ were 3.7 times more likely to be killed in a crash than younger people.