

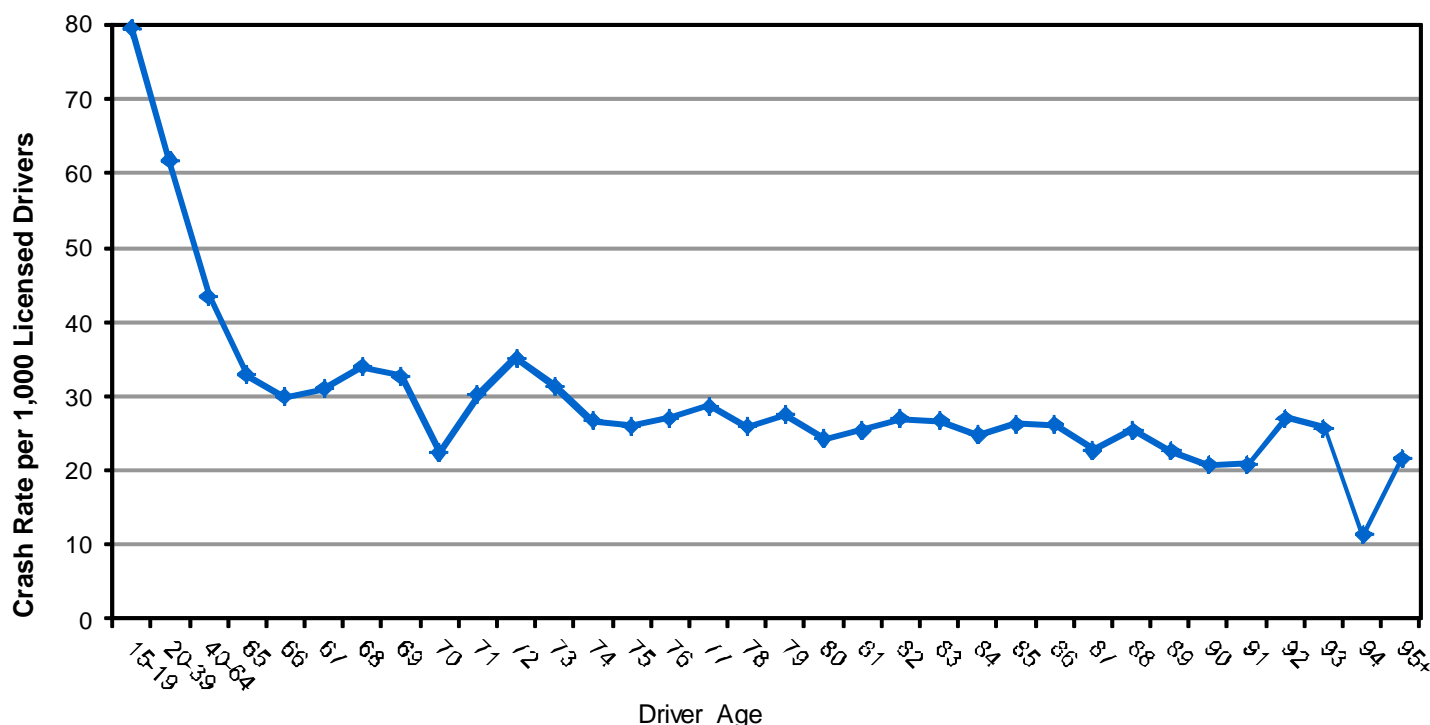
### Did you know in 2016:

- Older drivers had the lowest crash rate per licensed driver.
- Older drivers were in 8,180 motor vehicle crashes which resulted in 4,083 injured persons and 50 deaths.
- Although older drivers have the lowest crash rates of any drivers, the percent of crashes involving an older driver has been increasing for over a decade.
- Seniors represented 7% of people in a crash and 18% of the deaths.

## Older Drivers (Age 65+)



### Crash Rates per Licensed Driver by Age (Utah 2016)



- The older the driver the less likely they were in a crash per licensed driver.

### Leading Contributing Factors of Older Driver Crashes Compared to All Drivers (Utah 2016)

#### All Drivers in Crashes

1. Followed Too Closely (24%)
2. Failed to Yield Right of Way (20%)
3. Speed Too Fast (15%)
4. Failed to Keep in Proper Lane (13%)
5. Driver Distraction (9%)

#### Older Driver Crashes

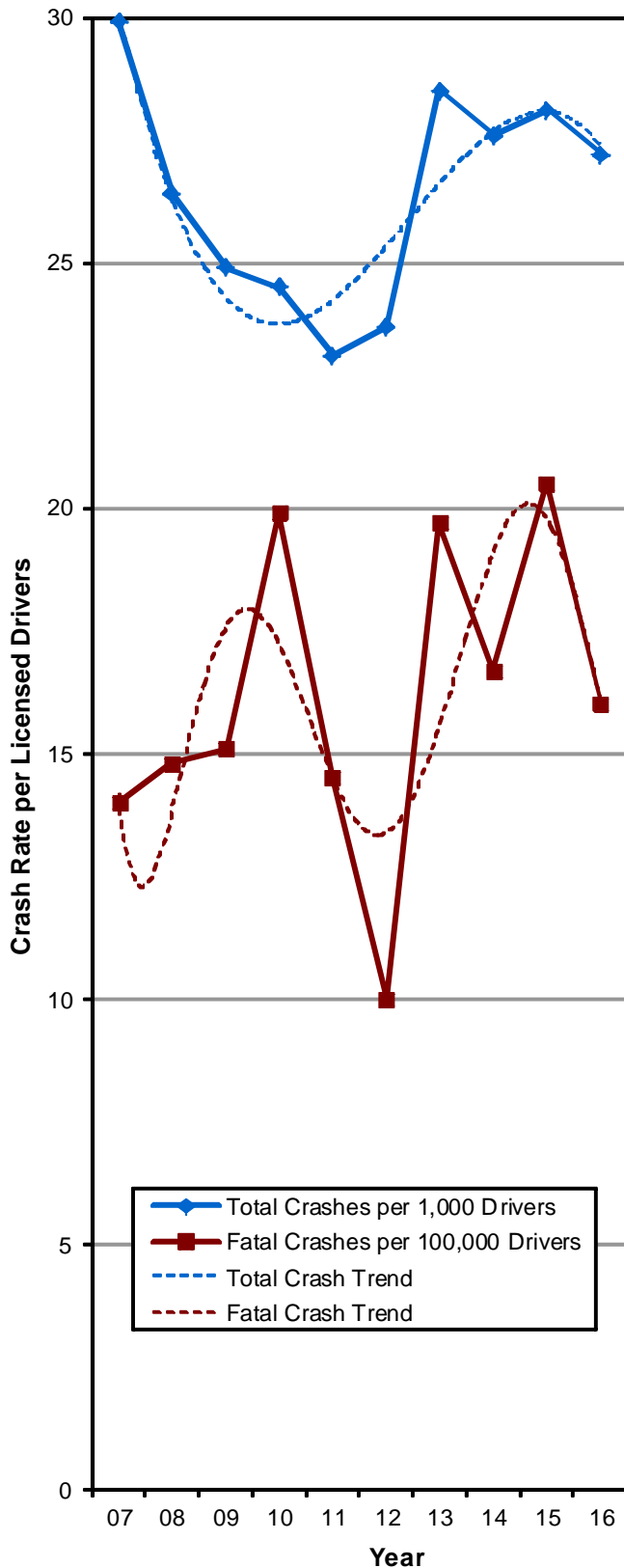
1. Failed to Yield Right of Way (18%)
2. Followed Too Closely (9%)
3. Failed to Keep in Proper Lane (6%)
4. Disregard Traffic Signal/Sign (5%)
5. Improper Turn (5%)

- The contributing factors for older drivers were different than other drivers in a crash.

## Older Drivers (Age 65+)

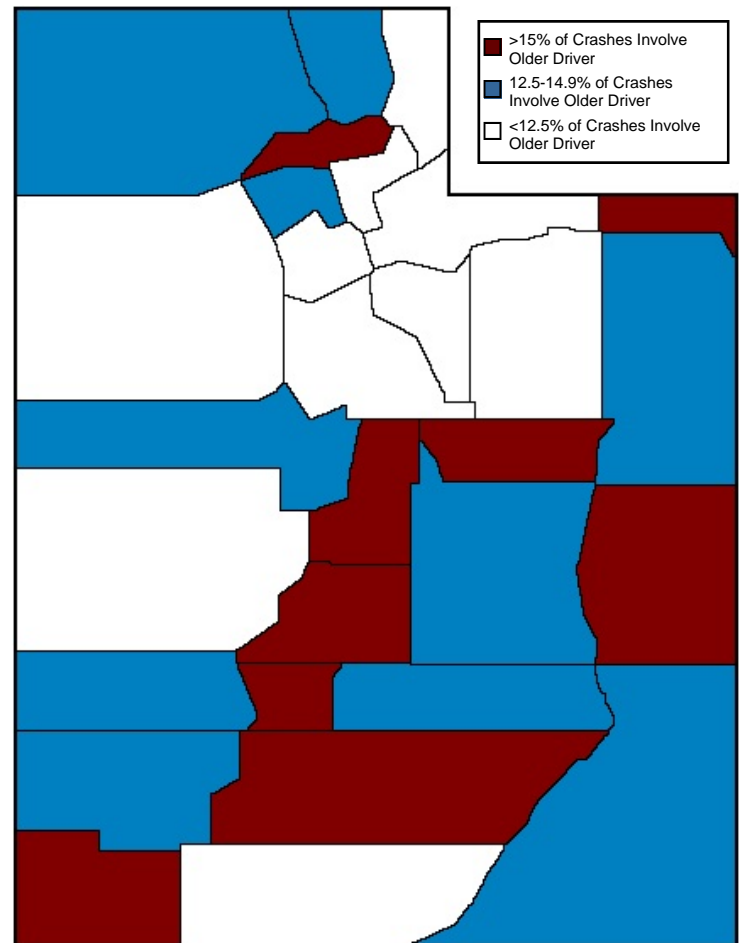


## Older Driver Crash Trend (Utah 2007-2016)



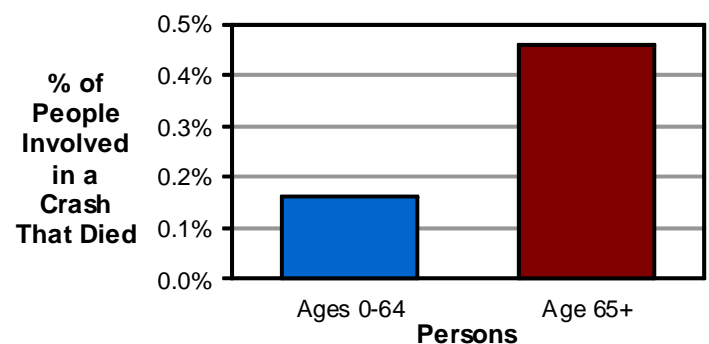
- The older driver crash rate per licensed driver has shown an increasing trend the last few years.

## Older Driver Crashes by County (Utah 2016)



- Piute, Washington, Daggett, and Grand counties had the highest percent of crashes that involved an older driver.

### Injury Severity by Age (Utah 2016)



- People age 65+ were 2.8 times more likely to be killed in a crash than younger people.