

Motor vehicle crashes are the leading cause of death for ages 2 through 34 in the United States.

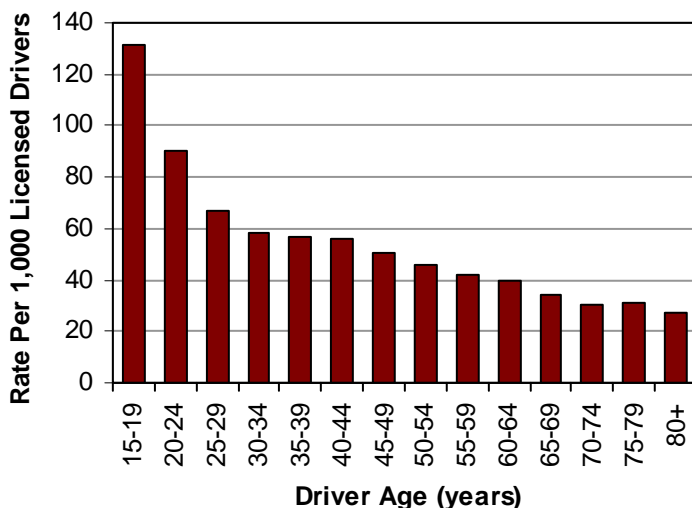
Overview



Did you know in 2007:

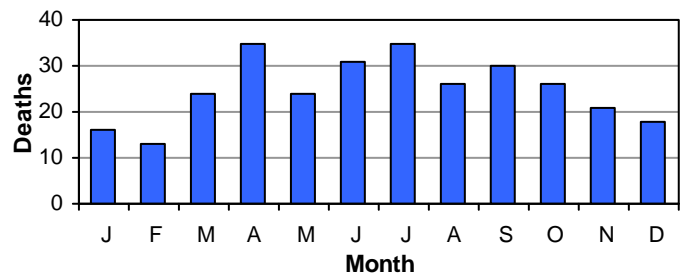
- 61,245 motor vehicle crashes occurred in Utah which resulted in 27,420 injured persons and 299 deaths.
- 2007 had the highest number of crashes ever on public roadways in Utah.
- A motor vehicle crash occurred in Utah every 8 minutes, a person was injured in a crash every 19 minutes, and a person died in a crash every 29 hours.

Crash Rates per Licensed Drivers by Age (Utah 2007)



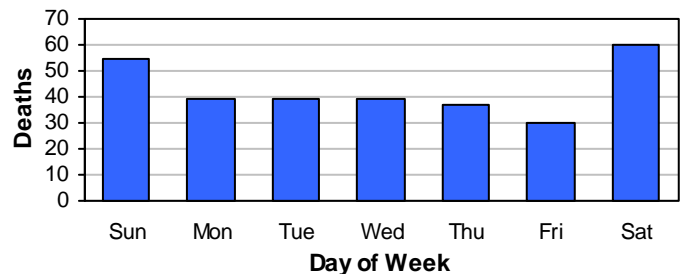
- Drivers aged 15-19 years had the highest crash rates per licensed driver.
- Older drivers had the lowest crash rates per licensed driver.

Deaths by Month (Utah 2007)



- April and July had the most deaths.

Deaths by Day of Week (Utah 2007)



- Saturday and Sunday had the most deaths.

Leading Contributing Factors (Utah 2007)

All Crashes

1. Followed Too Closely (23%)
2. Failed to Yield Right of Way (19%)
3. Speed Too Fast (14%)
4. Driver Distraction (10%)
5. Failed to Keep in Proper Lane (9%)

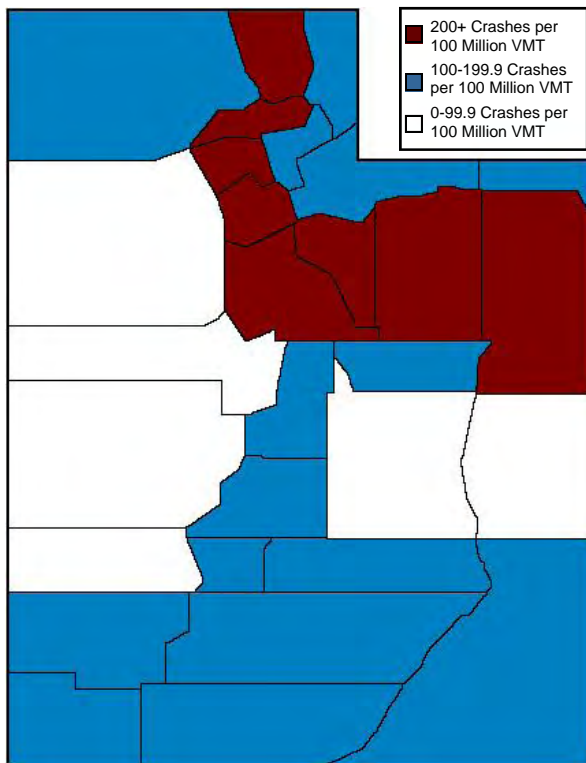
Fatal Crashes

1. Speed Too Fast (35%)
2. Reckless/Aggressive Driving (34%)
3. Driving Under the Influence (22%)
4. Asleep/Fatigue (14%)
5. Failed to Yield Right of Way (12%)

Overview

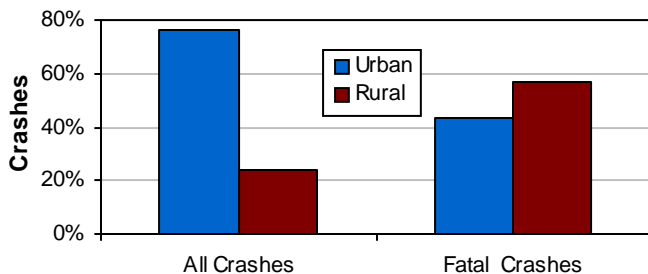


County Crash Rates by Miles Traveled (Utah 2007)



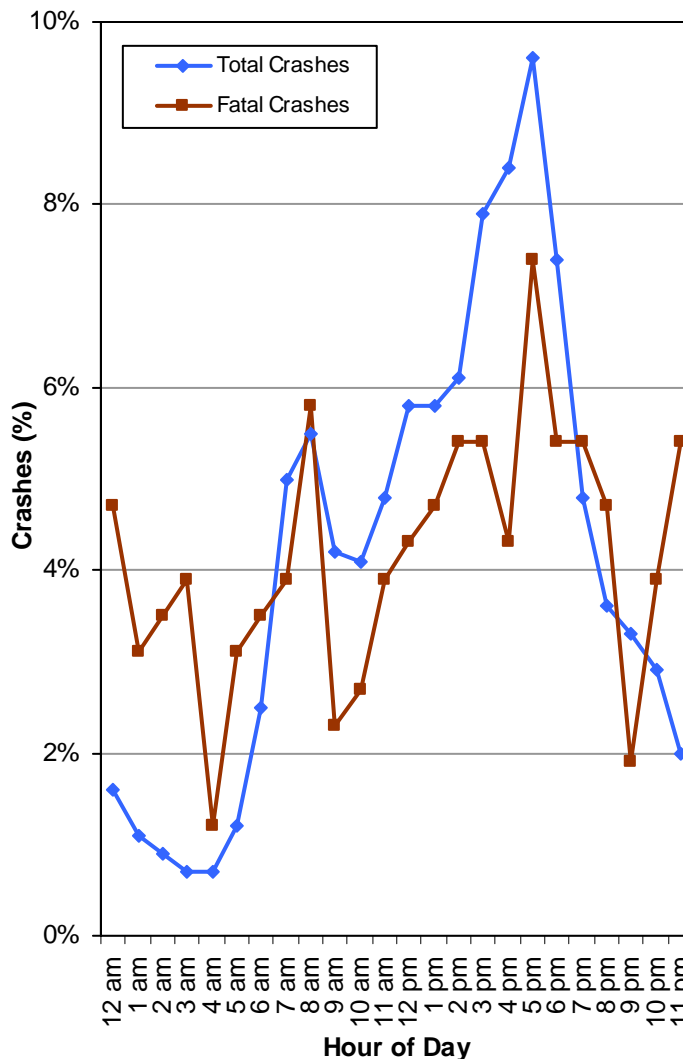
- Salt Lake, Weber, Utah, Uintah, and Wasatch Counties had the highest crash rates per miles traveled.

Urban/Rural Location (Utah 2007)



- While the majority of all crashes occurred in urban areas (76%), the majority of fatal crashes occurred in rural areas (57%).
- Rural crashes were 4.3 times more likely to be fatal than urban crashes.

Motor Vehicle Crashes by Hour of Day (Utah 2007)



- Total crashes were more likely to occur between 3:00 p.m. and 6:59 p.m.
- Fatal crashes were highest during the hours of 8:00 a.m., 2:00-7:59 p.m, and 11 p.m.

Leading Crash Descriptions (Utah 2007)

All Crashes

1. Rear End (32%)
2. Broadside (24%)
3. Collision With Fixed Object (14%)
4. Sideswipe (10%)
5. Parked Vehicle (5%)

Fatal Crashes

1. Overturn/Rollover (27%)
2. Collision With Fixed Object (17%)
3. Pedestrian/Bicyclist (14%)
4. Broadside (14%)
4. Head On (14%)

Vehicle rollovers were 12 times more likely to result in a death than other crashes.