

Motor vehicle crashes are the leading cause of death for ages 2 through 34 in the United States.

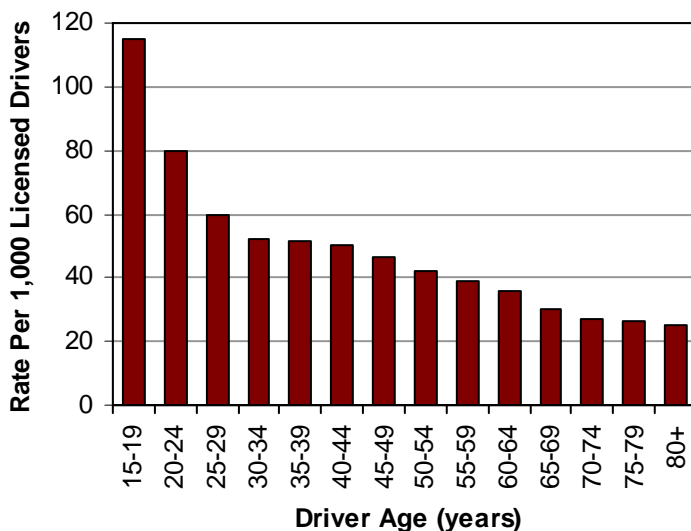
Overview



Did you know in 2008:

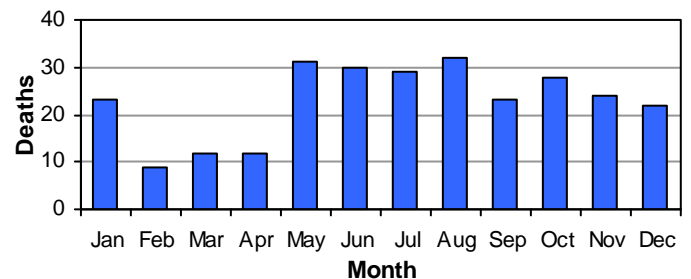
- 56,367 motor vehicle crashes occurred in Utah which resulted in 24,673 injured persons and 276 deaths.
- The 276 deaths in 2008 were the lowest in Utah since 1992.
- A motor vehicle crash occurred in Utah every 9 minutes, a person was injured in a crash every 21 minutes, and a person died in a crash every 31 hours.

Crash Rates per Licensed Drivers by Age (Utah 2008)



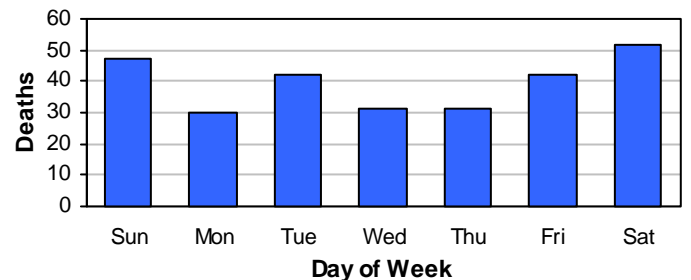
- Drivers aged 15-19 years had the highest crash rates per licensed driver.
- Older drivers had the lowest crash rates per licensed driver.

Deaths by Month (Utah 2008)



- August and May had the most deaths.

Deaths by Day of Week (Utah 2008)



- Saturday and Sunday had the most deaths.

Leading Contributing Factors (Utah 2008)

All Crashes

1. Followed Too Closely (22%)
2. Failed to Yield Right of Way (18%)
3. Speed Too Fast (18%)
4. Failed to Keep in Proper Lane (11%)
5. Vision Obscured by Weather Condition (10%)

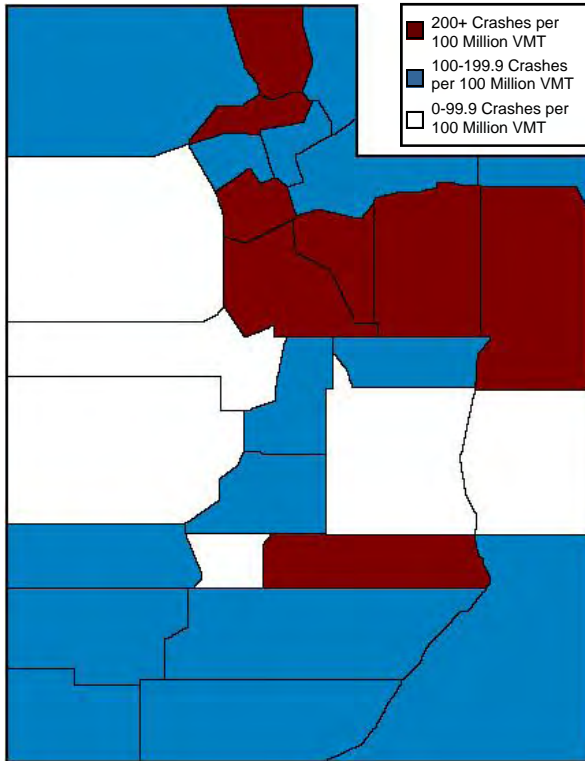
Fatal Crashes

1. Speed Too Fast (36%)
2. Ran Off Road (33%)
3. Failed to Keep in Proper Lane (31%)
4. Driving Under the Influence (24%)
5. Overcorrected (19%)

Overview

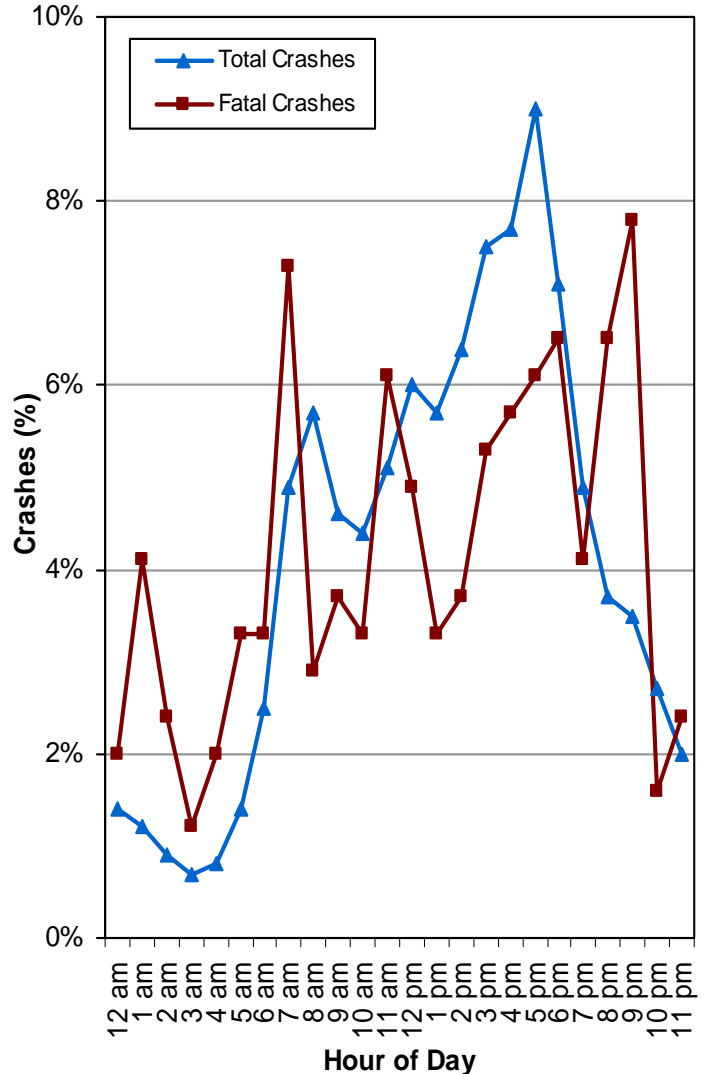


County Crash Rates by Miles Traveled (Utah 2008)

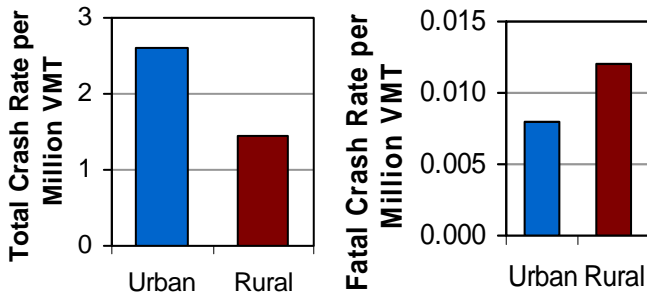


- Salt Lake, Weber, Wayne, Duchesne, and Utah Counties had the highest crash rates per miles traveled.

Motor Vehicle Crashes by Hour of Day (Utah 2008)



Urban/Rural Location (Utah 2008)



- Urban areas had a higher rate of total crashes per vehicle mile traveled while rural areas had a higher fatal crash rate.
- Rural crashes were 2.8 times more likely to be fatal than urban crashes.

- Total crashes were more likely to occur between 3:00 p.m. and 6:59 p.m.
- Fatal crashes were highest during the hours of 9:00 p.m. and 7:00 a.m.

Leading Crash Descriptions (Utah 2008)

All Crashes

1. Rear End (30%)
2. Broadside (24%)
3. Collision With Fixed Object (12%)
4. Sideswipe (9%)
5. Parked Vehicle (5%)

Fatal Crashes

1. Collision With Fixed Object (23%)
2. Overturn/Rollover (20%)
3. Broadside (19%)
4. Pedestrian/Bicyclist (15%)
5. Head On & Sideswipe (8% each)

Vehicle rollovers were 12 times more likely to result in a death than other crashes.