

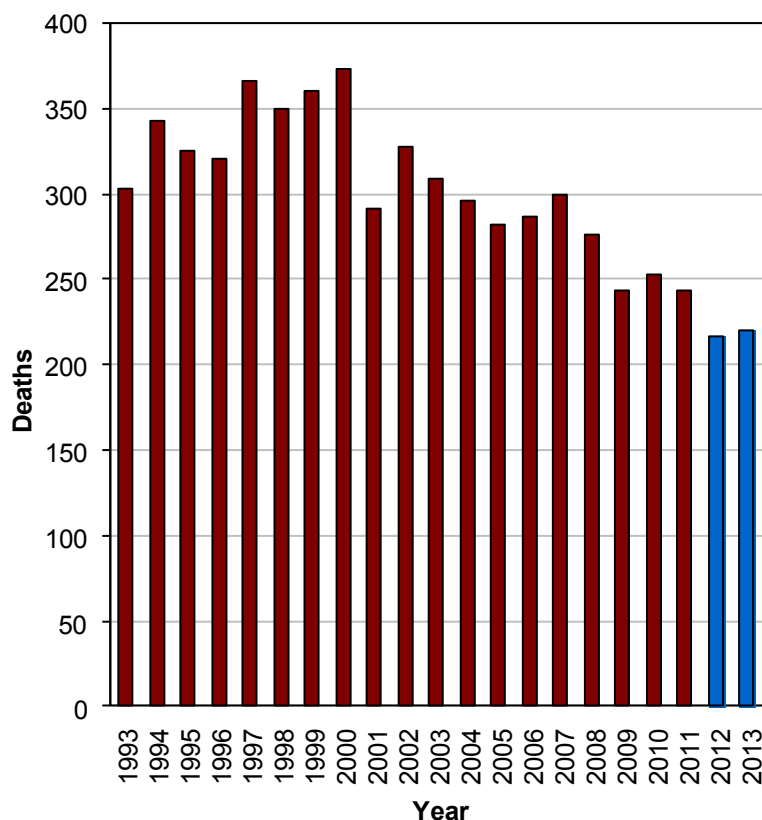
## Did you know in 2013:

- 55,637 motor vehicle crashes occurred in Utah which resulted in 22,740 injured persons and 220 deaths.
- The Utah death rate per mile traveled was lower than the U.S. rate.
- A motor vehicle crash occurred in Utah every 9 minutes, a person was injured in a crash every 23 minutes, and a person died in a crash every 39.5 hours.

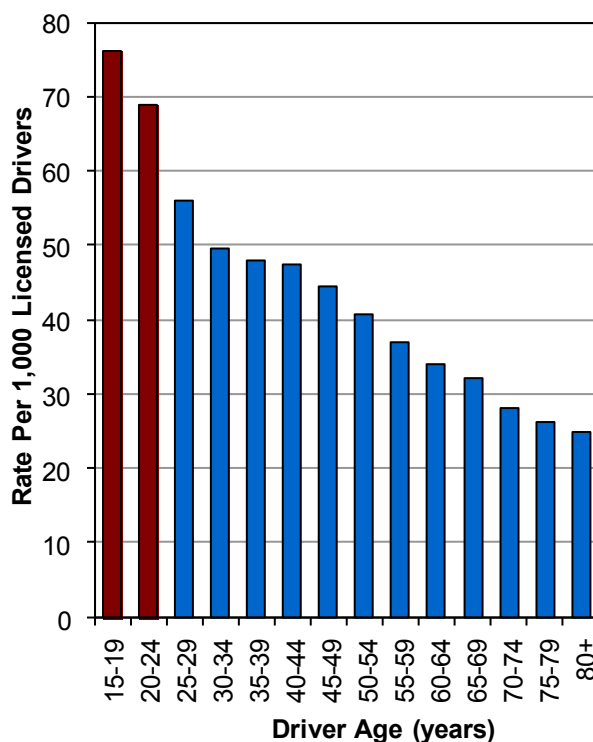
## Overview



### Deaths by Year (Utah 1993-2013)



### Crash Rates per Licensed Drivers by Age (Utah 2013)



- 2013 had the 2nd lowest deaths in Utah since 1959.

- Drivers aged 15-24 years had the highest crash rates per licensed driver.

## Crash Summary (Utah 2013)

### Leading Causes of All Crashes

1. Followed Too Closely (21%)
2. Failed to Yield (18%)
3. Speed (17%)
4. Failed to Keep in Proper Lane (13%)
5. Distracted Driving (9%)

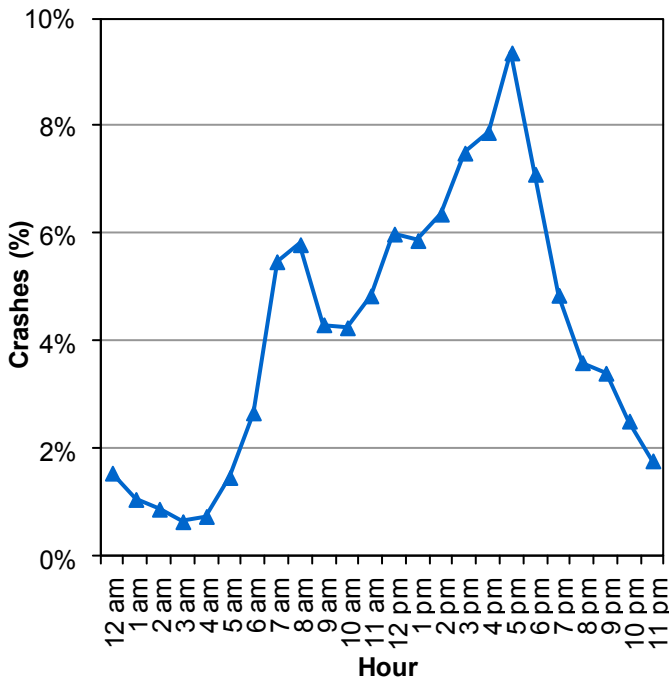
### Leading Causes of Death

1. Speed (40%)
2. Failed to Keep in Proper Lane (35%)
3. Unrestrained Occupants (28%)
4. Drunk Driving (10%)
4. Failed to Yield (10%)

## Overview



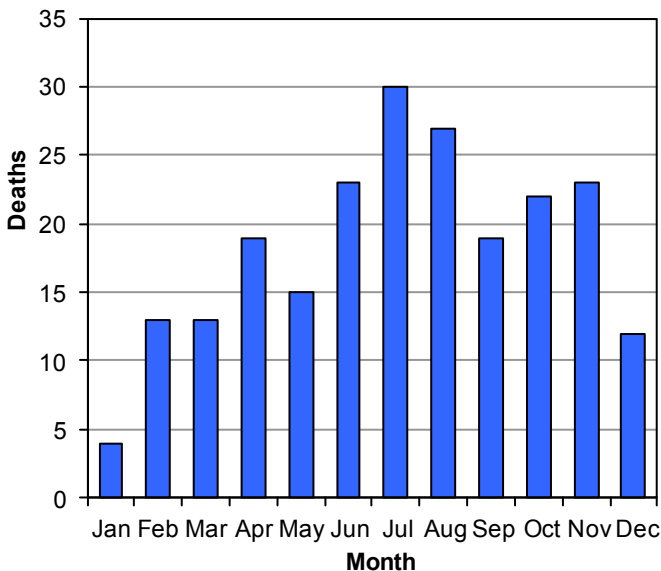
### Motor Vehicle Crashes by Hour (Utah 2013)



- Crashes were highest between 2:00 p.m. and 6:59 p.m.

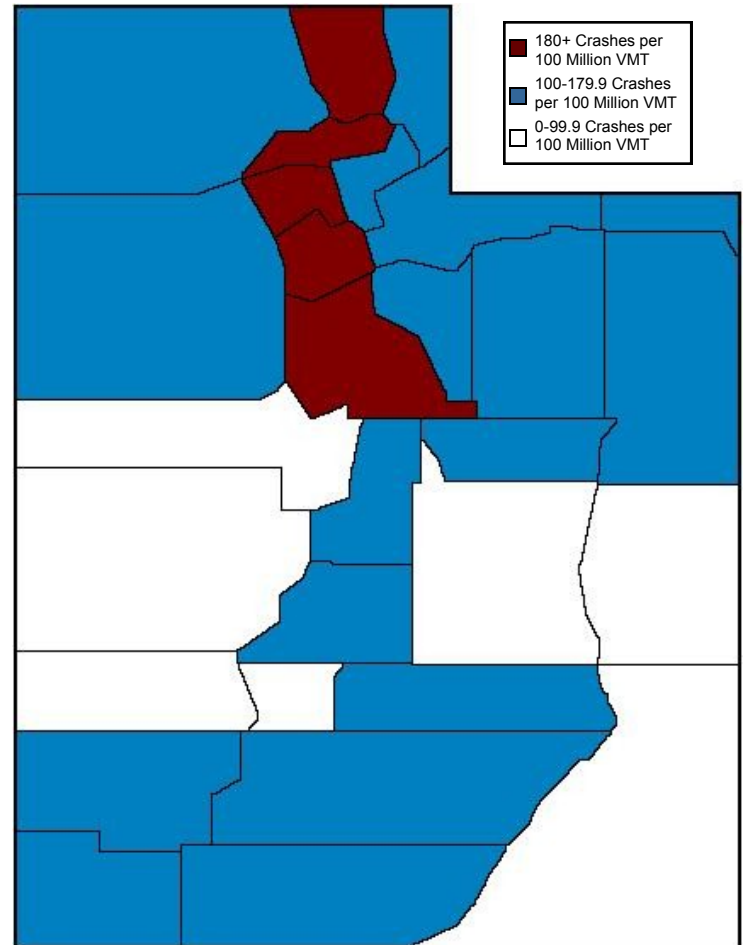
**Vehicle rollovers were the most deadly event, being 10 times more likely to result in a death than other crashes.**

### Deaths by Month (Utah 2013)



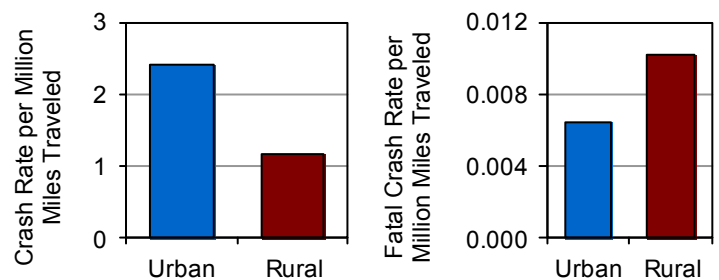
- July had the most deaths.

### County Crash Rates by Miles Traveled (Utah 2013)



- Salt Lake, Weber, and Cache Counties had the highest crash rates per miles traveled.

### Urban/Rural Location (Utah 2013)



- Urban areas had a higher rate of total crashes per vehicle mile traveled while rural areas had a higher fatal crash rate.
- Rural crashes were 3.3 times more likely to be fatal than urban crashes.