

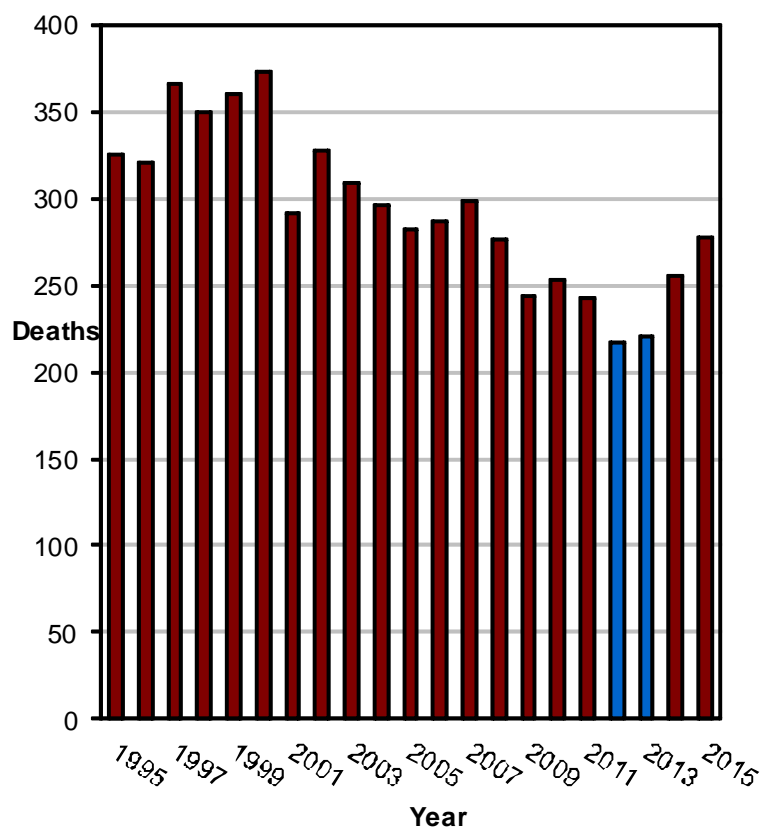
Did you know in 2015:

- 60,012 motor vehicle crashes occurred in Utah which resulted in 25,350 injured persons and 278 deaths.
- The Utah death rate per mile traveled was lower than the U.S. rate.
- A motor vehicle crash occurred in Utah every 8 minutes, a person was injured in a crash every 20 minutes, and a person died in a crash every 31 hours.

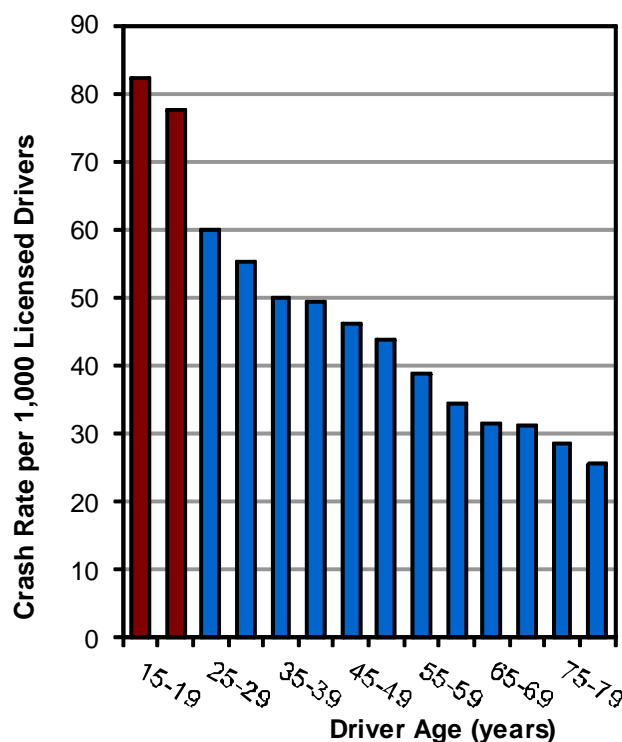
Overview



Deaths by Year (Utah 1995-2015)



Crash Rates per Licensed Drivers by Age (Utah 2015)



- 2012 (217) had the lowest deaths in Utah since 1959 (205).

- Drivers aged 15-24 years had the highest crash rates per licensed driver.

Crash Summary (Utah 2015)

Leading Causes of All Crashes

1. Followed Too Closely (22%)
2. Failed to Yield (18%)
3. Speed (18%)
4. Failed to Keep in Proper Lane (12%)
5. Distracted Driving (10%)

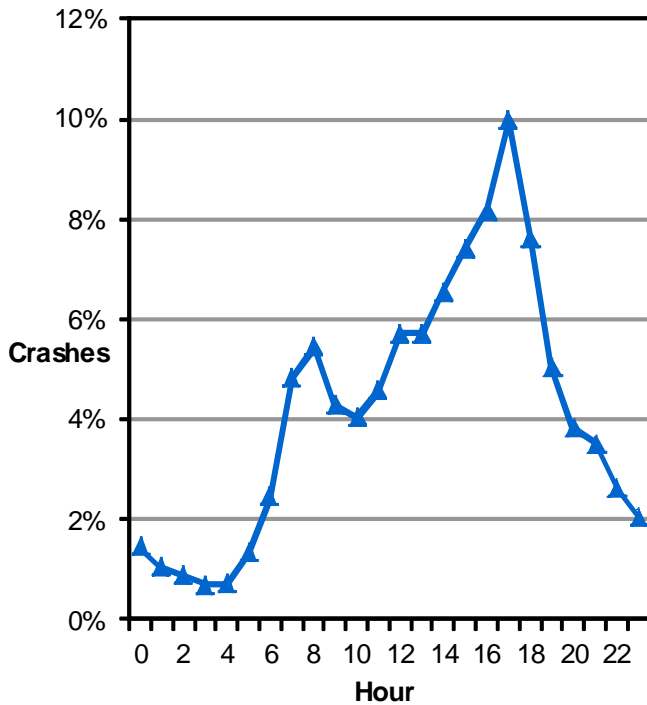
Leading Causes of Death

1. Speed (37%)
2. Unrestrained Occupants (31%)
3. Drunk Driving (13%)
4. Failed to Yield (11%)
5. Failed to Keep in Proper Lane (11%)

Overview



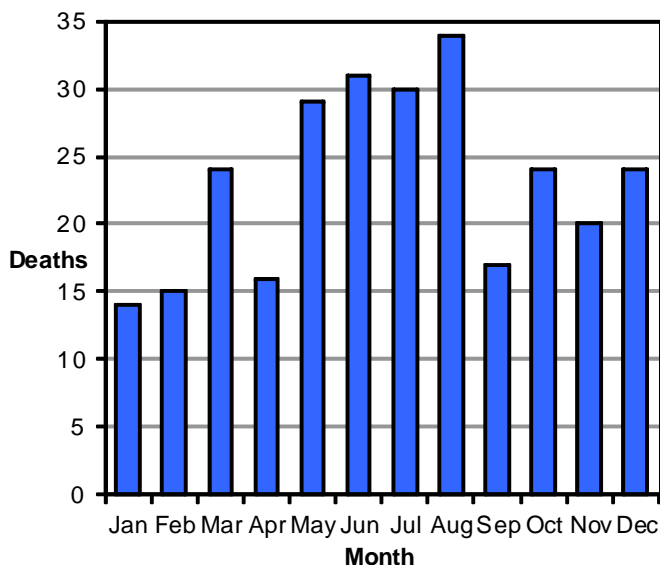
Motor Vehicle Crashes by Hour (Utah 2015)



- Crashes were highest between 3:00 p.m. and 6:59 p.m.

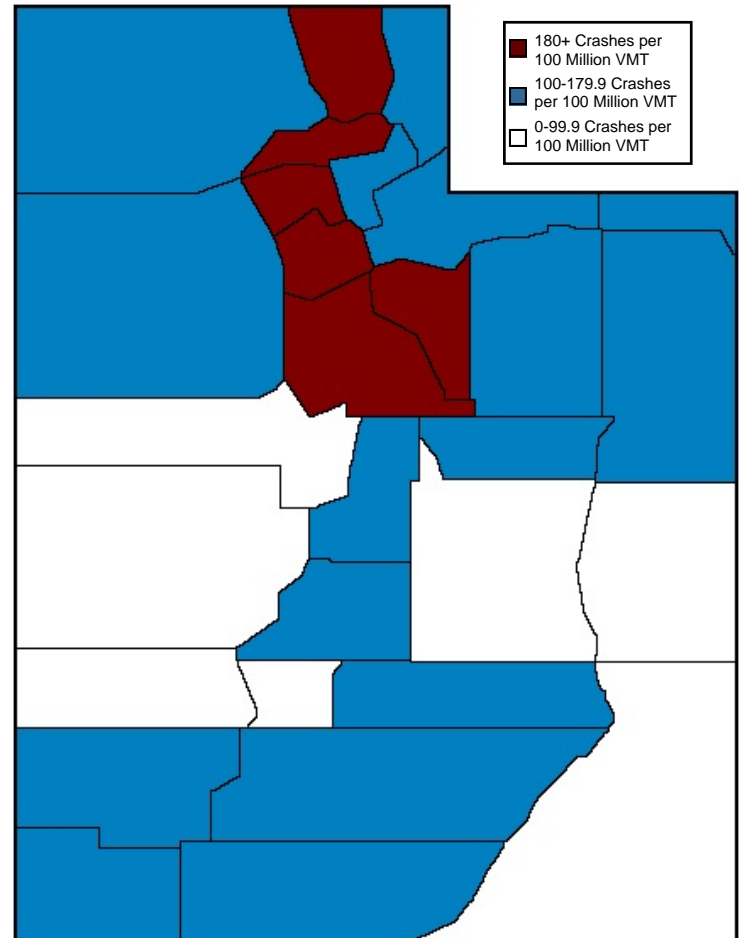
Traffic deaths in 2015 were the highest since 2007. Pedestrian deaths in 2015 were the highest since 1987.

Deaths by Month (Utah 2015)



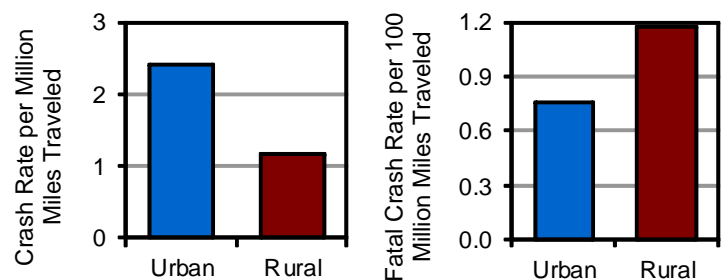
- August had the most deaths.

County Crash Rates by Miles Traveled (Utah 2015)



- Salt Lake, Weber, and Cache Counties had the highest crash rates per miles traveled.

Urban/Rural Location (Utah 2015)



- Urban areas had a higher rate of total crashes per vehicle mile traveled while rural areas had a higher fatal crash rate.
- Rural crashes were 3.2 times more likely to be fatal than urban crashes.