

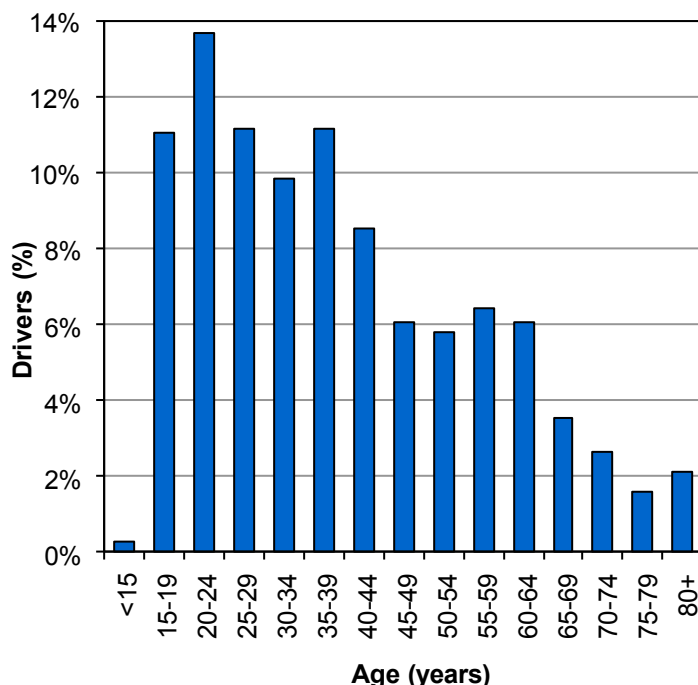
Did you know in 2013:

- 903 pedestrians were struck by motor vehicles; 783 were injured and 30 were killed.
- Pedestrians accounted for 1% of persons in crashes and 14% of deaths.
- Pedestrian crashes were 12.1 times more likely to result in a death than other crashes.

Pedestrians

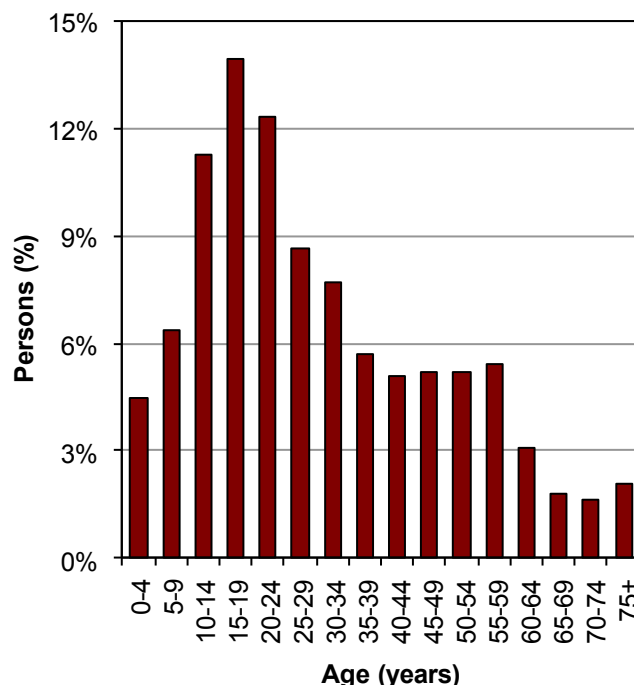


Age of Drivers in Pedestrian-Motor Vehicle Crashes (Utah 2013)



- Over one-half (57%) of drivers in pedestrian-motor vehicle crashes were under 40 years.

Age of Pedestrians in Pedestrian-Motor Vehicle Crashes (Utah 2013)



- One-half (49%) of the pedestrians in crashes were under 25 years of age.

Leading Contributing Factors of Drivers in Pedestrian Crashes (Utah 2013)

1. Failed to Yield Right of Way (29%)
2. Hit and Run (13%)
3. Driver Distraction (8%)
4. Improper Backing (4%)
5. Speed Too Fast (4%)



Leading Contributing Factors of Pedestrians in Crashes (Utah 2013)

1. Improper Crossing (13%)
 2. Darting (9%)
 3. In Roadway Improperly (7%)
- 54% of pedestrians had no contributing factor in the crash.

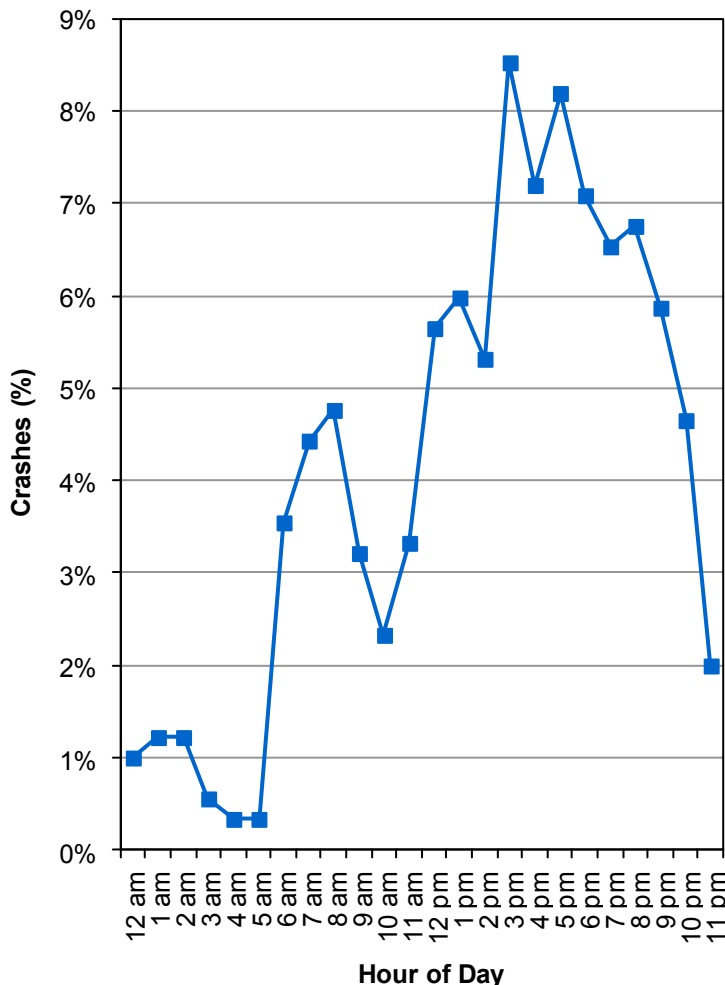


Pedestrians



Nearly one-third (28%) of drivers who hit pedestrians were turning. Drivers need to watch for pedestrians before turning.

Pedestrian-Motor Vehicle Crashes by Hour (Utah 2013)

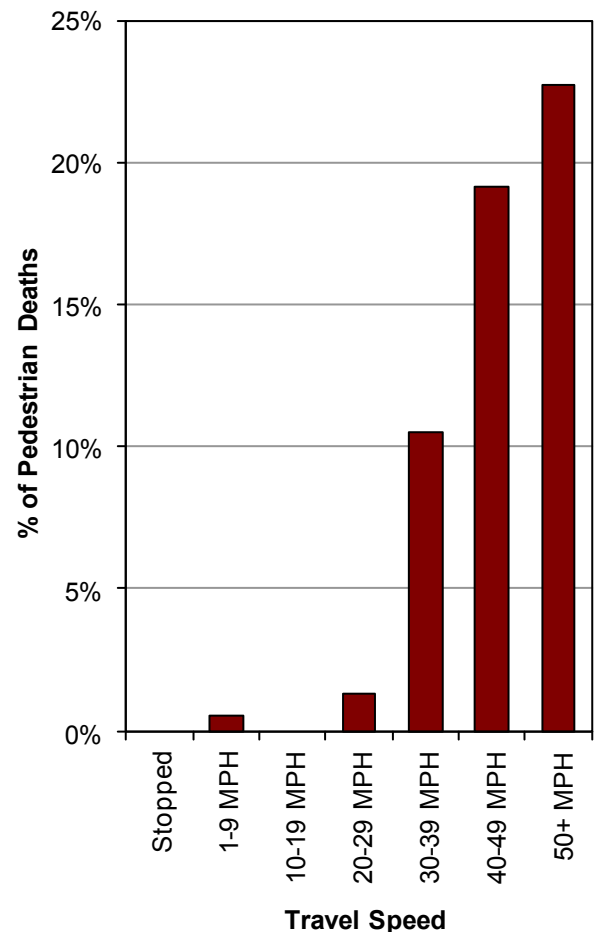


- Pedestrian-motor vehicle crashes occurred most often between 3:00 p.m.-8:59 p.m.

Location of Pedestrians in Crashes (Utah 2013)

1. Marked Crosswalk (40%)
2. In Roadway Not at Intersection/Crosswalk (28%)
3. Shoulder (8%)
4. Unmarked Crosswalk (6%)
5. Sidewalk (5%)

Percent of Pedestrian Deaths by Vehicle Travel Speed (Utah 2013)



- The higher the speed of the vehicle the more likely the pedestrian was injured or killed in a crash.
- Pedestrians hit by a vehicle traveling 40 MPH or higher were 14.5 times more likely to die.

Motor Vehicle Action Prior to Crash (Utah 2013)

1. Straight Ahead (49%)
2. Turning Right (15%)
3. Turning Left (12%)
4. Backing (8%)
5. Parking (6%)

