

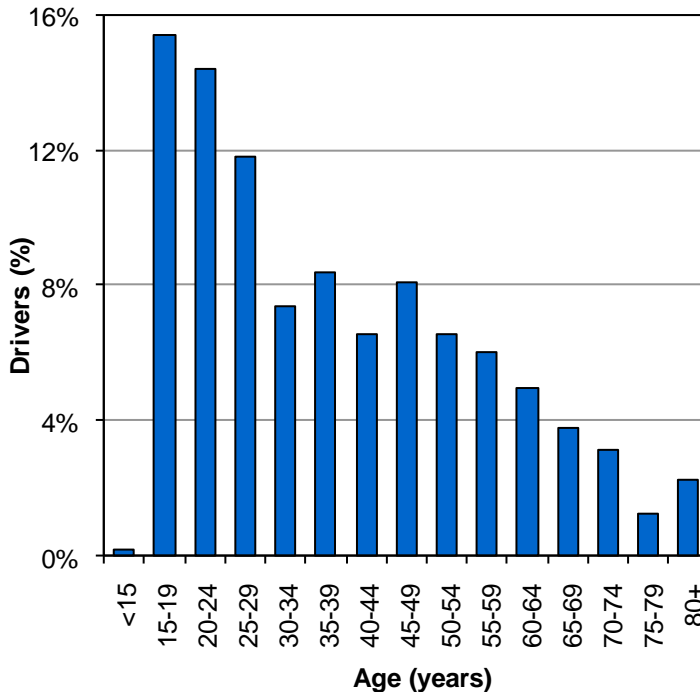
Did you know in 2009:

- 698 pedestrians were struck by motor vehicles; 613 were injured and 20 were killed.
- Pedestrians accounted for 1% of persons in crashes and 8% of deaths.
- Pedestrian crashes were 8 times more likely to result in a death than other crashes.

Pedestrians

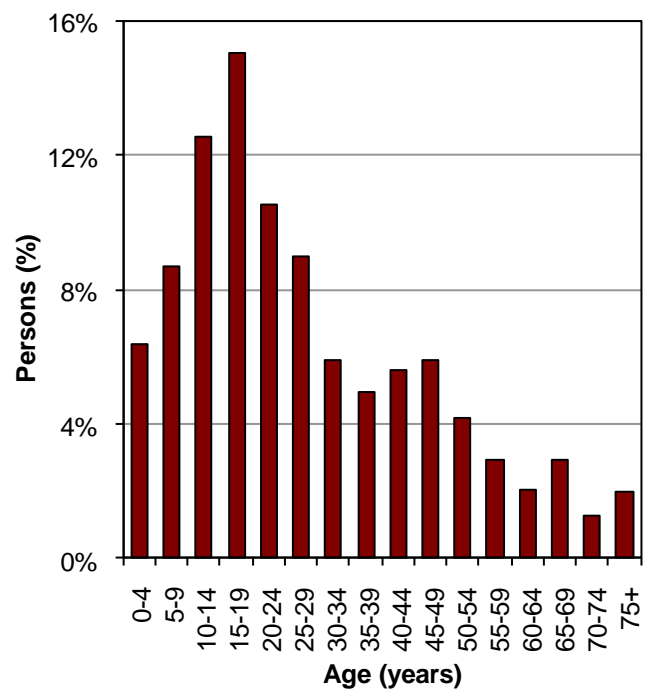


Age of Drivers in Pedestrian-Motor Vehicle Crashes (Utah 2009)



- Nearly half (42%) of drivers in pedestrian-motor vehicle crashes were under 30 years.

Age of Pedestrians in Pedestrian-Motor Vehicle Crashes (Utah 2009)



- Over half (53%) of the pedestrians in crashes were under 25 years of age.

Leading Contributing Factors of Drivers in Pedestrian Crashes (Utah 2009)

1. Failed to Yield Right of Way (32%)
2. Hit and Run (10%)
3. Driver Distraction (7%)
4. Vision Obscured by Weather (5%)
5. Speed Too Fast (4%)



Leading Contributing Factors of Pedestrians in Crashes (Utah 2009)

1. Improper Crossing (19%)
 2. Inattentive (7%)
 3. Darting (7%)
- 47% of pedestrians had no contributing factor in the crash.

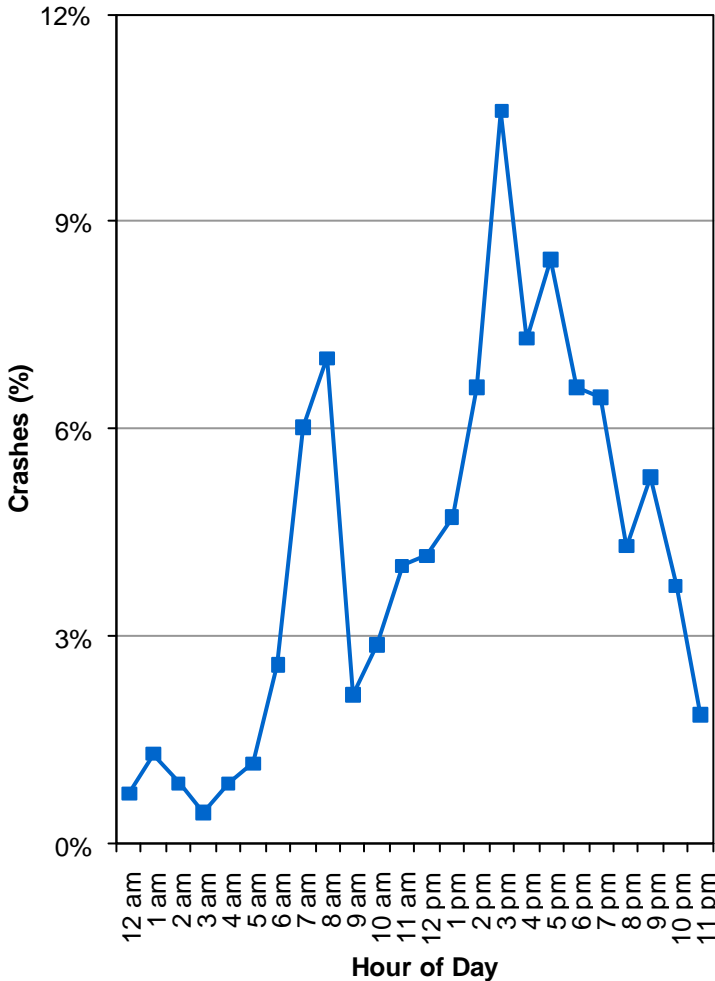


Pedestrians



Nearly one-third (32%) of drivers who hit pedestrians were turning. Drivers need to watch for pedestrians before turning.

Pedestrian-Motor Vehicle Crashes by Hour (Utah 2009)

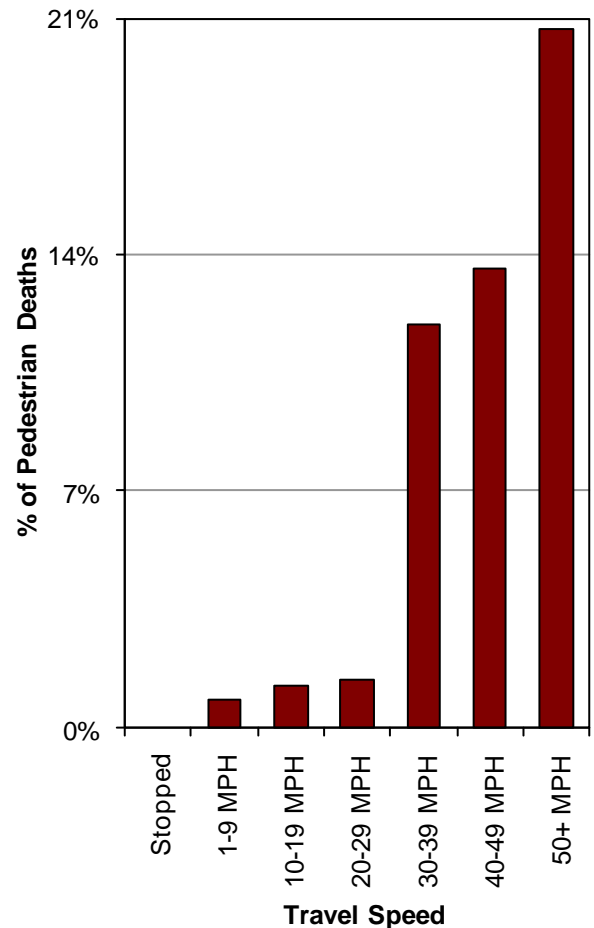


- Pedestrian-motor vehicle crashes occurred most often between 3:00 p.m.-5:59 p.m.

Location of Pedestrians in Crashes (Utah 2009)

1. Marked Crosswalk (39%)
2. In Roadway Not at Intersection/Crosswalk (29%)
3. Shoulder (10%)
4. Unmarked Crosswalk (8%)
5. Sidewalk (5%)

Percent of Pedestrian Deaths by Vehicle Travel Speed (Utah 2009)



- The higher the speed of the vehicle the more likely the pedestrian was injured or killed in a crash.
- Pedestrians hit by a vehicle traveling 30 MPH or higher were 10 times more likely to die.

Motor Vehicle Action Prior to Crash (Utah 2009)

1. Straight Ahead (53%)
2. Turning Right (19%)
3. Turning Left (13%)
4. Parked/Parking (5%)
5. Backing (4%)

