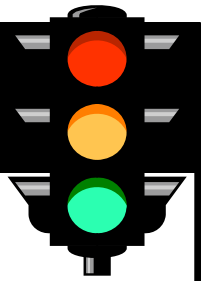


PERSONS AND CRASHES

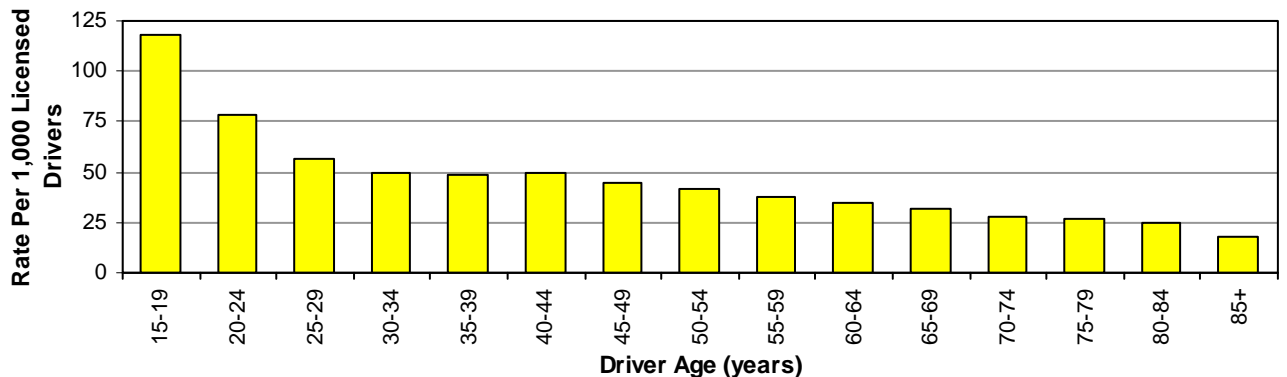


Motor vehicle crashes are the leading cause of death for ages 2 through 34 in the United States.

Did you know in 2006:

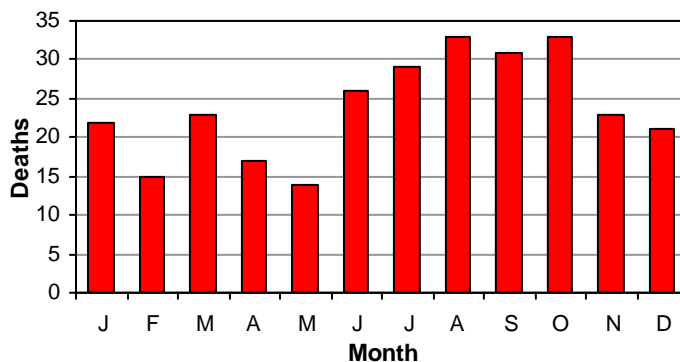
- 56,187 motor vehicle crashes occurred in Utah which resulted in 27,257 injured persons and 287 deaths.
- Utah's crash rate decreased 1.8% from 2005 while the fatal crash rate increased 1.1%.
- A motor vehicle crash occurred in Utah every 9 minutes, a person was injured in a crash every 19 minutes, and a person died in a crash every 30 hours.

Crash Rates per Licensed Drivers by Age (Utah 2006)



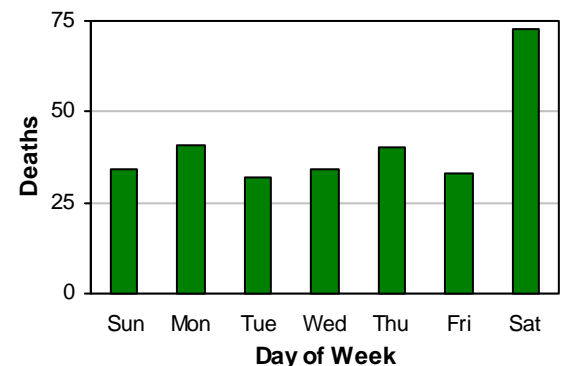
- Drivers aged 15-19 years had the highest crash rates per licensed driver.
- Older drivers had the lowest crash rates per licensed driver.

Deaths by Month (Utah 2006)



- Nearly one-half (43%) of deaths occurred July through October.

Deaths by Day of Week (Utah 2006)



- One-fourth of deaths occurred on Saturday.

Leading Contributing Factors (Utah 2006)

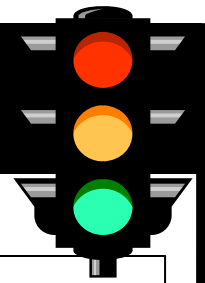
All Crashes

1. Followed Too Closely (13%)
2. Failed to Yield Right of Way (13%)
3. Speed Too Fast (10%)
4. Driver Distraction (8%)
5. Vision Obscured by Weather Condition (5%)

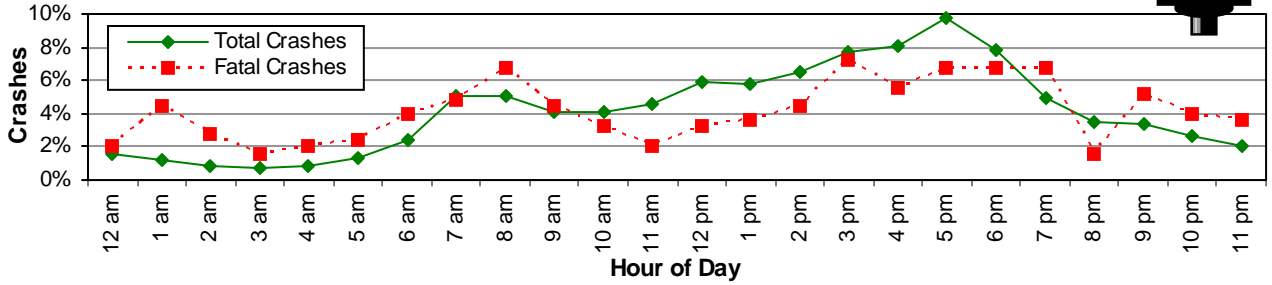
Fatal Crashes

1. Reckless/Aggressive Driving (32%)
2. Speed Too Fast (20%)
3. Failed to Yield Right of Way (10%)
4. Wrong Side/Wrong Way (7%)
5. Driving Under the Influence (4%)

PERSONS AND CRASHES

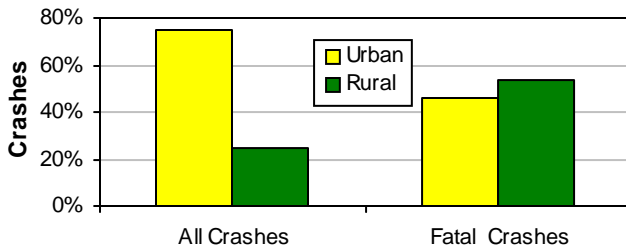


Motor Vehicle Crashes by Hour of Day (Utah 2006)



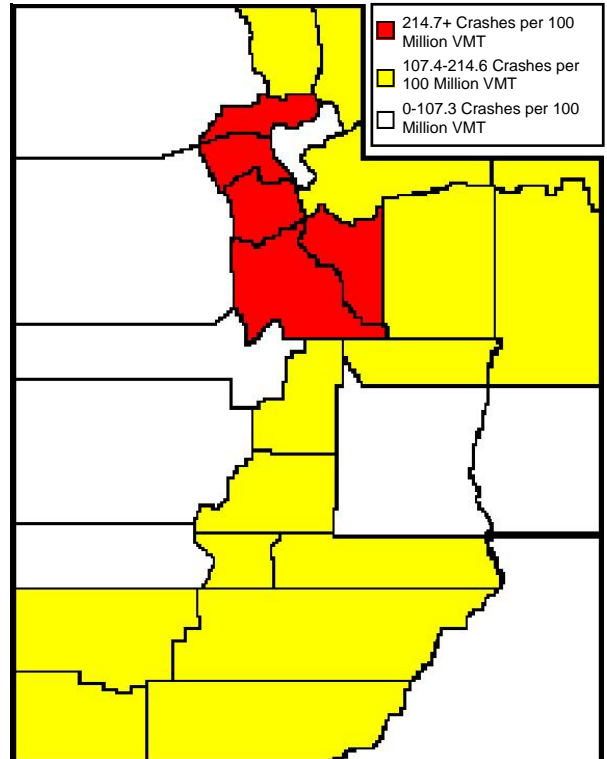
- Total crashes were more likely to occur between 2:00 p.m. and 6:00 p.m., with a peak at 5:00 p.m.
- Fatal crashes were highest during the hours of 8:00 a.m. and 3:00 p.m. to 7:00 p.m.

Urban/Rural Location (Utah 2006)



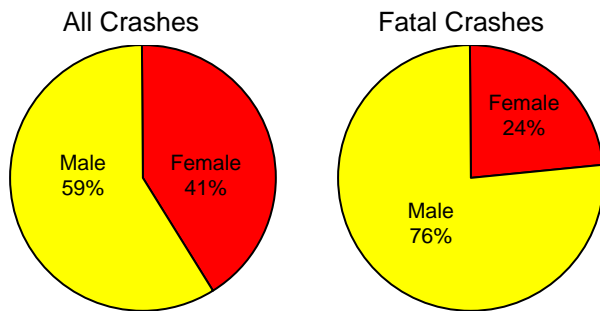
- While the majority of all crashes occurred in urban areas (75%), the majority of fatal crashes occurred in rural areas (54%).
- Rural crashes were 3.5 times more likely to be fatal than urban crashes.

County Crash Rates by Miles Traveled (Utah 2006)



- Weber, Salt Lake, Davis, Wasatch, and Utah Counties had the highest crash rates per miles traveled.

Driver Gender (Utah 2006)



- Males represented 59% of all drivers in crashes and 76% of drivers in fatal crashes.

Leading Crash Descriptions (Utah 2006)

All Crashes

1. Rear End (27%)
2. Broadside (21%)
3. Sideswipe (10%)
4. Head On (7%)
5. Parked Vehicle (5%)

Fatal Crashes

1. Single Vehicle Rollover (27%)
2. Broadside (16%)
3. Pedestrian/Bicyclist (16%)
4. Head On (13%)
5. Sideswipe (5%)

Vehicle rollovers were 11 times more likely to result in a death than other crashes.