

Alcohol-Impaired Drivers



2

Section 3: Alcohol-Impaired Drivers

0

<u>Trends</u>	
Deaths and Fatal Crashes 2002-2011.....	62
Deaths Involving Alcohol-Impaired Drivers.....	62
Crashes 2002-2011.....	63
<u>Counties</u>	
Impaired Driving Crashes by County.....	64
<u>Drivers</u>	
Impaired Driver Age.....	65
Impaired Driver Gender.....	66
Impaired Driver BAC in Fatal Crashes.....	66
Previous DUI Convictions of Impaired Drivers.....	66
Drug-Impaired Drivers.....	66
<u>Crash Conditions</u>	
Crash Severity.....	67
Month.....	67
Day of Week.....	68
Hour.....	68

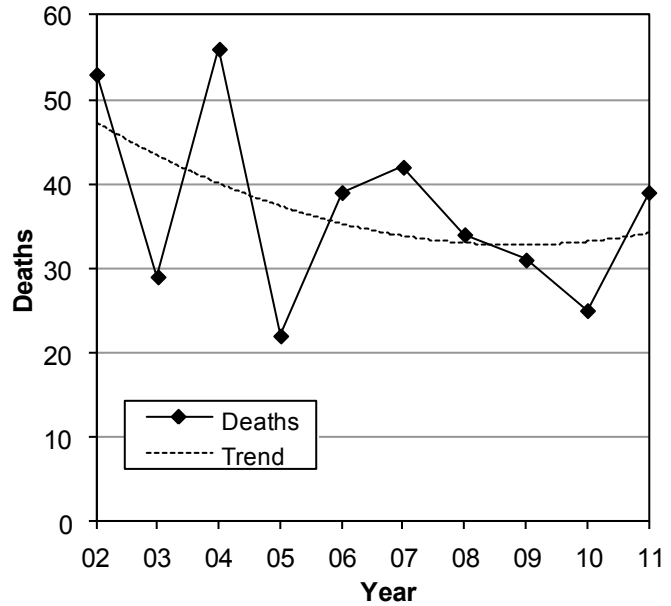
1

1

Trends

Fatal Crashes Involving Alcohol-Impaired Drivers (Utah 2002-2011)

Alcohol-Impaired Driver Crashes						
Year	Deaths			Fatal Crashes		
	All	Alcohol		All	Alcohol	
	#	#	%	#	#	%
2002	328	53	16.2%	274	47	17.2%
2003	309	29	9.4%	262	24	9.2%
2004	296	56	18.9%	260	50	19.2%
2005	282	22	7.8%	235	21	8.9%
2006	287	39	13.6%	249	32	12.9%
2007	299	42	14.0%	260	37	14.2%
2008	276	34	12.3%	244	32	13.1%
2009	244	31	12.7%	217	28	12.9%
2010	253	25	9.9%	218	24	11.0%
2011	243	39	16.0%	224	33	14.7%
Total	2,817	370	13.1%	2,443	328	13.4%



- Over the past 10 years, the percentage of deaths and fatal crashes involving alcohol-impaired drivers has fluctuated around 13% of all deaths and fatal crashes.
- On average, 37 people die a year in Utah from alcohol-impaired driver crashes.

Deaths Involving Alcohol-Impaired Drivers (Utah 2002-2011)

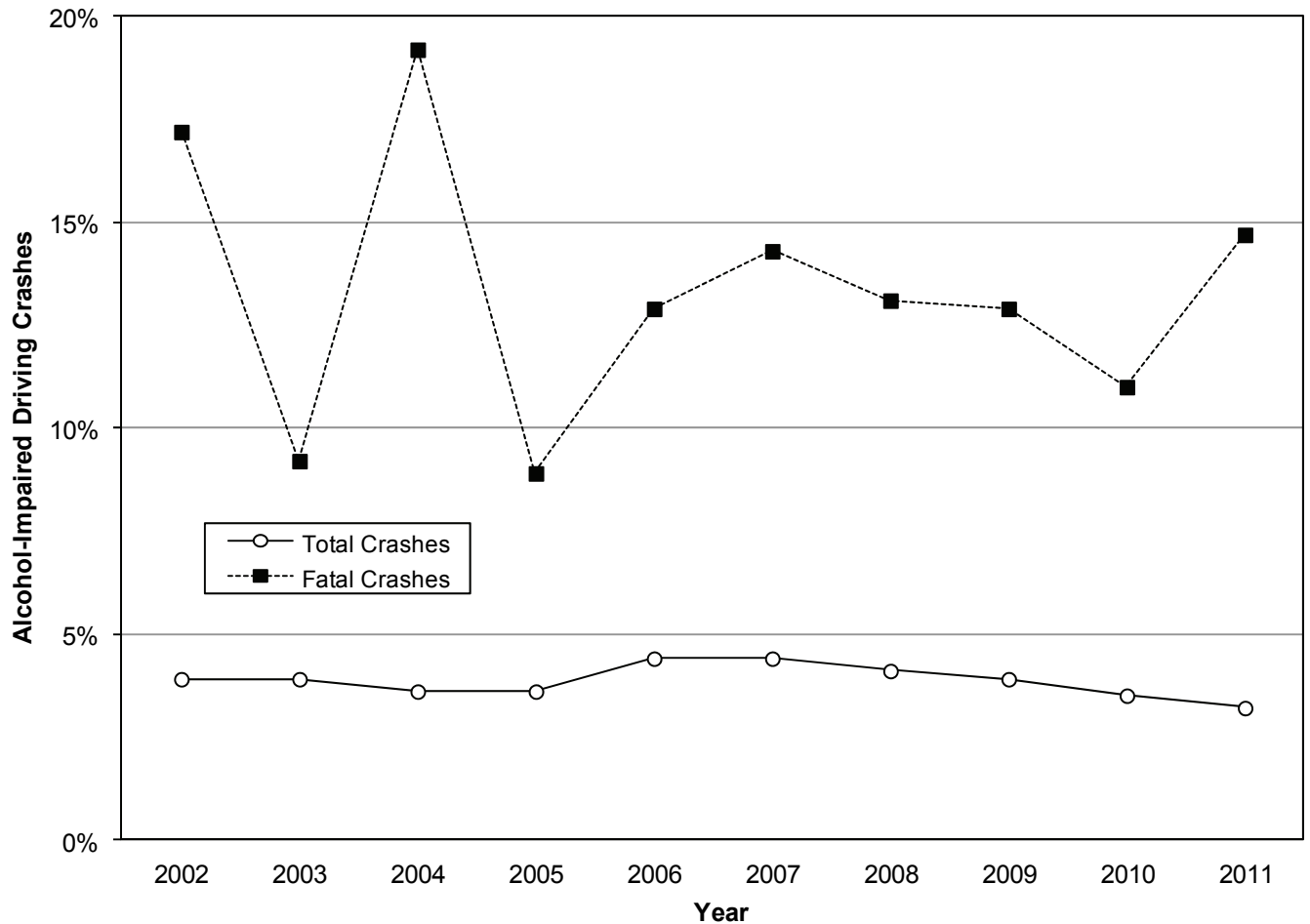
Deaths Involving Alcohol-Impaired Drivers by Person Type of Fatality														
Year	Drunk Driver		Passenger of Drunk Driver		Driver of Another Vehicle		Passenger of Another Vehicle		Pedestrian		Bicyclist		Total	
	#	%	#	%	#	%	#	%	#	%	#	%	#	%
2002	26	49.1%	14	26.4%	5	9.4%	7	13.2%	1	1.9%	0	0.0%	53	100.0%
2003	16	55.2%	7	24.1%	2	6.9%	1	3.4%	3	10.3%	0	0.0%	29	100.0%
2004	32	57.1%	12	21.4%	8	14.3%	3	5.4%	1	1.8%	0	0.0%	56	100.0%
2005	13	59.1%	6	27.3%	1	4.5%	0	0.0%	1	4.5%	1	4.5%	22	100.0%
2006	22	56.4%	7	17.9%	3	7.7%	6	15.4%	1	2.6%	0	0.0%	39	100.0%
2007	24	57.1%	9	21.4%	3	7.1%	4	9.5%	2	4.8%	0	0.0%	42	100.0%
2008	24	70.6%	8	23.5%	1	2.9%	1	2.9%	0	0.0%	0	0.0%	34	100.0%
2009	20	64.5%	6	19.4%	3	9.7%	1	3.2%	1	3.2%	0	0.0%	31	100.0%
2010	19	76.0%	3	12.0%	1	4.0%	0	0.0%	2	8.0%	0	0.0%	25	100.0%
2011	26	66.7%	7	17.9%	4	10.3%	1	2.6%	1	2.6%	0	0.0%	39	100.0%
Total	222	60.0%	79	21.4%	31	8.4%	24	6.5%	13	3.5%	1	0.3%	370	100.0%

- Of the 39 alcohol-impaired driver crash deaths in 2011, 26 (67%) were to the drunk driver, 7 (18%) deaths were to passengers of the drunk driver, 5 (13%) deaths were to occupants of another vehicle in the crash, and 1 (3%) death was a pedestrian.
- Over the past 10 years, 60% of deaths involving alcohol-impaired drivers were to the drunk driver.

Trends

Alcohol-Impaired Driver Crashes (Utah 2002-2011)

Alcohol-Impaired Driver Crashes												
Year	Property Damage Only			Injury			Fatal			Total		
	All	Alcohol		All	Alcohol		All	Alcohol		All	Alcohol	
	#	#	%	#	#	%	#	#	%	#	#	%
2002	33,542	924	2.8%	19,552	1,117	5.7%	274	47	17.2%	53,368	2,088	3.9%
2003	31,842	904	2.8%	18,285	1,024	5.6%	262	24	9.2%	50,389	1,952	3.9%
2004	34,222	878	2.6%	19,423	1,020	5.3%	260	50	19.2%	53,905	1,948	3.6%
2005	35,158	898	2.6%	19,545	1,058	5.4%	235	21	8.9%	54,938	1,977	3.6%
2006	37,674	1,261	3.3%	18,264	1,195	6.5%	249	32	12.9%	56,187	2,488	4.4%
2007	42,368	1,441	3.4%	18,619	1,240	6.7%	258	37	14.3%	61,245	2,718	4.4%
2008	38,997	1,217	3.1%	17,125	1,081	6.3%	245	32	13.1%	56,367	2,330	4.1%
2009	35,398	1,108	3.1%	15,752	883	5.6%	217	28	12.9%	51,367	2,019	3.9%
2010	34,155	897	2.6%	14,995	802	5.3%	218	24	11.0%	49,368	1,723	3.5%
2011	36,418	910	2.5%	15,645	719	4.6%	224	33	14.7%	52,287	1,662	3.2%
Total	359,774	10,438	2.9%	177,205	10,139	5.7%	2,442	328	13.4%	539,421	20,905	3.9%



- Over the past 10 years, 3.9% of total crashes involved alcohol-impaired drivers compared with 13.4% of fatal crashes.
- Over the past 10 years, alcohol-impaired driver crashes were 3.9 times more likely to be fatal than crashes not involving an alcohol-impaired driver.

Counties

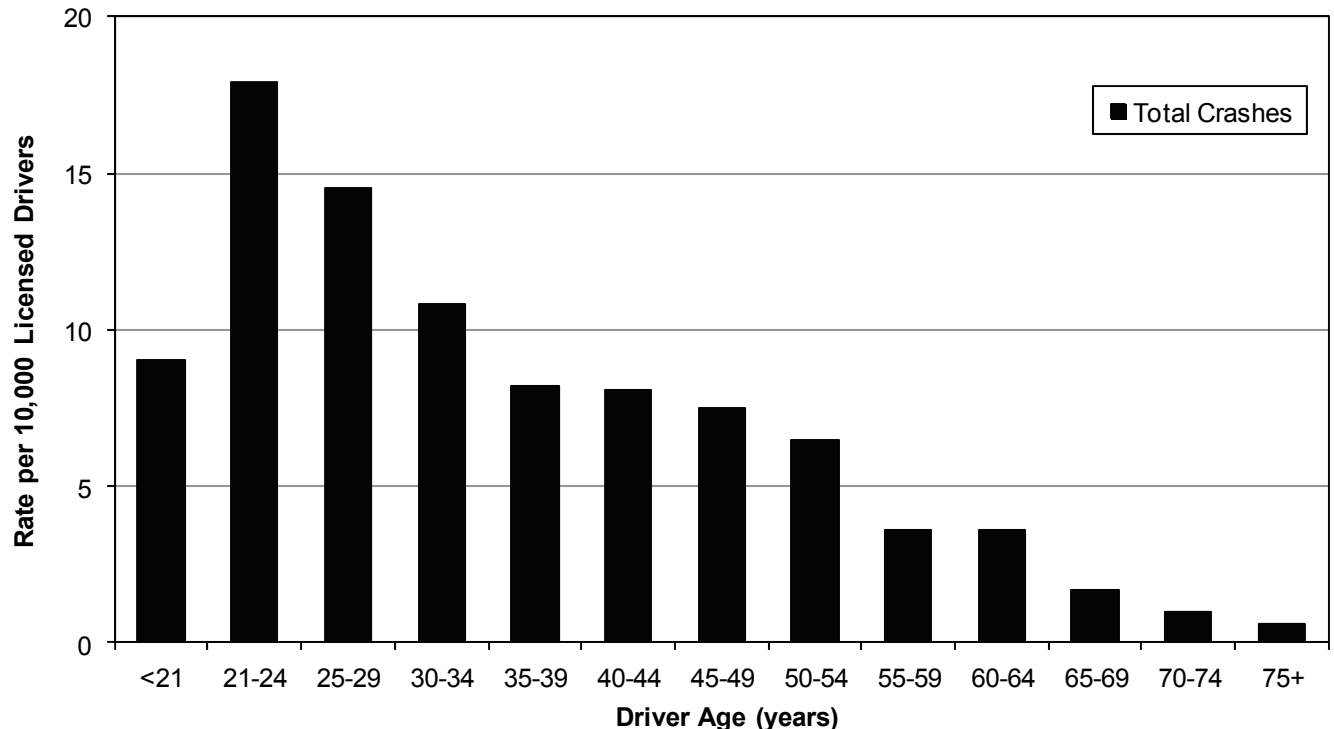
Alcohol-Impaired Driver Crashes by County (Utah 2011)

Alcohol-Impaired Driver Crashes								
County	PDO Crashes		Injury Crashes		Fatal Crashes		Total	
	#	Rate per 100 Million VMT	#	Rate per 100 Million VMT	#	Rate per 100 Million VMT	#	Rate per 100 Million VMT
Daggett	2	6.3	3	9.4	0	0.00	5	15.7
Duchesne	7	2.9	15	6.3	3	1.26	25	10.5
Salt Lake	466	5.3	312	3.6	8	0.09	786	9.0
Rich	1	2.2	3	6.5	0	0.00	4	8.7
Weber	68	4.2	65	4.1	1	0.06	134	8.4
Garfield	2	1.9	5	4.7	1	0.93	8	7.4
Uintah	12	3.0	16	4.1	1	0.25	29	7.4
Summit	29	4.0	23	3.2	1	0.14	53	7.3
Piute	0	0.0	1	3.6	1	3.56	2	7.1
Morgan	4	3.1	3	2.3	2	1.56	9	7.0
Wasatch	15	4.6	6	1.8	1	0.31	22	6.7
Tooele	22	2.7	30	3.7	0	0.00	52	6.4
Carbon	7	2.3	9	3.0	3	1.00	19	6.3
Cache	31	3.6	14	1.6	2	0.23	47	5.5
Washington	39	2.9	36	2.6	0	0.00	75	5.5
Sanpete	5	2.5	5	2.5	0	0.00	10	5.1
Utah	99	2.6	74	2.0	1	0.03	174	4.6
Wayne	0	0.0	2	4.3	0	0.00	2	4.3
Grand	5	1.6	7	2.2	1	0.31	13	4.1
Davis	53	2.1	42	1.7	2	0.08	97	3.9
Kane	0	0.0	5	3.6	0	0.00	5	3.6
San Juan	6	2.1	2	0.7	1	0.35	9	3.1
Box Elder	14	1.6	13	1.5	0	0.00	27	3.1
Iron	9	1.3	8	1.2	2	0.29	19	2.8
Beaver	3	1.2	3	1.2	0	0.00	6	2.4
Emery	2	0.6	4	1.3	1	0.32	7	2.2
Millard	4	0.9	6	1.3	0	0.00	10	2.2
Sevier	4	1.3	3	0.9	0	0.00	7	2.2
Juab	1	0.3	4	1.0	1	0.26	6	1.5
Statewide	910	3.5	719	2.7	33	0.13	1,662	6.3

- Daggett (15.7), Duchesne (10.5), Salt Lake (9.0), and Rich (8.7) counties had the highest rates of alcohol-impaired driver total crashes per 100 million vehicle miles traveled.
- Juab (1.5), Sevier (2.2), Millard (2.2), and Emery (2.2) counties had the lowest rates of alcohol-impaired driver total crashes per 100 million vehicle miles traveled.

Age of Alcohol-Impaired Drivers in Crashes (Utah 2011)

Alcohol-Impaired Drivers												
Age	PDO Crashes			Injury Crashes			Fatal Crashes			Total		
	#	%	Rate per 10,000 Drivers	#	%	Rate per 10,000 Drivers	#	%	Rate per 10,000 Drivers	#	%	Rate per 10,000 Drivers
<21	110	12.0%	5.6	64	8.8%	3.2	4	12.1%	0.20	178	10.6%	9.0
21-24	167	18.2%	10.2	121	16.7%	7.4	6	18.2%	0.37	294	17.5%	17.9
25-29	175	19.0%	8.2	128	17.7%	6.0	7	21.2%	0.33	310	18.5%	14.5
30-34	131	14.3%	6.0	101	14.0%	4.6	5	15.2%	0.23	237	14.1%	10.8
35-39	73	7.9%	4.0	76	10.5%	4.1	3	9.1%	0.16	152	9.1%	8.2
40-44	68	7.4%	4.1	65	9.0%	3.9	0	0.0%	0.00	133	7.9%	8.1
45-49	59	6.4%	3.9	52	7.2%	3.4	4	12.1%	0.26	115	6.9%	7.5
50-54	53	5.8%	3.4	47	6.5%	3.0	2	6.1%	0.13	102	6.1%	6.5
55-59	23	2.5%	1.6	28	3.9%	2.0	0	0.0%	0.00	51	3.0%	3.6
60-64	26	2.8%	2.3	14	1.9%	1.2	1	3.0%	0.09	41	2.4%	3.6
65-69	7	0.8%	0.8	6	0.8%	0.7	1	3.0%	0.12	14	0.8%	1.7
70-74	4	0.4%	0.7	2	0.3%	0.3	0	0.0%	0.00	6	0.4%	1.0
75+	2	0.2%	0.2	5	0.7%	0.4	0	0.0%	0.00	7	0.4%	0.6
Unknown	21	2.3%	n/a	15	2.1%	n/a	0	0.0%	n/a	36	2.1%	n/a
Total	919	100.0%	4.7	724	100.0%	3.7	33	100.0%	0.17	1,676	100.0%	8.5



- Drivers aged 21-24 years had the highest rate of total alcohol-impaired driver crashes (17.9).
- Drivers aged 21-24 (0.37) and 25-29 (0.33) years had the highest rate of alcohol-impaired driver fatal crashes.
- 178 (10.6%) of the impaired drivers in total crashes were under the age of 21 years.
- Four of the 33 (12.1%) impaired drivers in fatal crashes were under the age of 21 years.
- There is a rapid decline of impaired drivers as age increases with less than 10% of impaired drivers over the age of 55 years (7.1%).

Drivers

Gender of Alcohol-Impaired Drivers in Crashes (Utah 2011)

Alcohol-Impaired Drivers								
Gender	PDO Crashes		Injury Crashes		Fatal Crashes		Total	
	#	%	#	%	#	%	#	%
Male	625	68.0%	524	72.4%	29	87.9%	1,178	70.3%
Female	275	29.9%	193	26.7%	4	12.1%	472	28.2%
Unknown	19	2.1%	7	1.0%	0	0.0%	26	1.6%
Total	919	100.0%	724	100.0%	33	100.0%	1,676	100.0%

- Male drivers were much more likely to be an alcohol-impaired driver in a crash. Male drivers represented 70.3% of the impaired drivers in total crashes and 87.9% of impaired drivers in fatal crashes.

Drivers in Fatal Crashes by Blood Alcohol Concentration (Utah 2011)

All Drivers in Fatal Crashes		
BAC	Drivers	
	#	%
.00	120	35.3%
.01 - .07	6	1.8%
.08 - .15	13	3.8%
.16 - .23	15	4.4%
.24 - .31	5	1.5%
.32+	0	0.0%
Not Tested/Unknown	181	53.2%
Total	340	100.0%

- Of the 159 drivers in fatal crashes who were tested for alcohol, 120 (75.5%) had a blood alcohol concentration (BAC) of 0.00, 6 (3.8%) had a BAC of 0.01-0.07, and 33 (20.8%) were over the legal limit of 0.08.
- 20 out of the 33 (60.6%) drivers in fatal crashes who tested over the legal limit for alcohol had BAC levels at or above twice the legal limit of 0.08.

Previous Driving Under the Influence Convictions of Alcohol-Impaired Drivers in Fatal Crashes (Utah 2011)

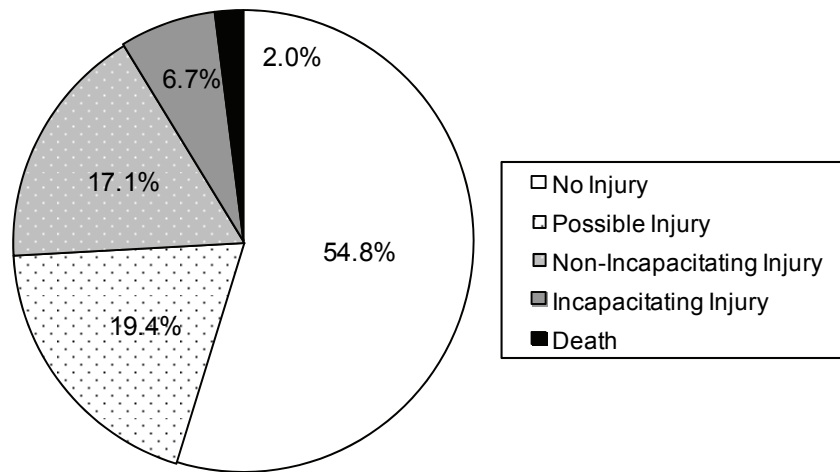
- Of the 33 alcohol-impaired drivers in fatal crashes, five drivers (15.2%) had been previously convicted of driving under the influence in the past three years.

Drug-Impaired Drivers in Crashes (Utah 2011)

- There were an additional 605 drivers impaired by drugs only, 306 (50.6%) in property damage only crashes, 269 (44.5%) in injury crashes, and 30 (5.0%) in fatal crashes.
- Cannabinoids (marijuana), stimulants (methamphetamine, cocaine), depressants (diazepam), and narcotics (oxycodone) were the most common drugs for drug-impaired drivers in fatal crashes.
- Note: Drug presence does not necessarily imply impairment. For many drug types, drug presence can be detected long after any impairment that might affect driving has passed. Also, whereas the impairment effects for various concentration levels of alcohol is well understood, little evidence is available to link concentrations of other drug types to driver performance. For these reasons, no further analysis of drug-impaired drivers is included.

Crash Conditions

Alcohol-Impaired Driver Crash Severity (Utah 2011)



- Alcohol-impaired driver crashes were more likely to have a death or injury than other crashes.
- A higher percentage of alcohol-impaired driver crashes (43.3%) resulted in an injury compared to all motor vehicle crashes that resulted in an injury (29.9%).
- In addition, a higher percentage of alcohol-impaired driver crashes were fatal (2.0%) compared to all motor vehicle crashes (0.4%).

Alcohol-Impaired Driver Crashes by Month (Utah 2011)

Alcohol-Impaired Driver Crashes								
Month	PDO Crashes		Injury Crashes		Fatal Crashes		Total	
	#	Rate per Day	#	Rate per Day	#	Rate per Day	#	Rate per Day
January	78	2.5	52	1.7	1	0.03	131	4.2
February	64	2.3	53	1.9	1	0.04	118	4.2
March	88	2.8	64	2.1	4	0.13	156	5.0
April	78	2.6	56	1.9	3	0.10	137	4.6
May	73	2.4	63	2.0	2	0.06	138	4.5
June	79	2.6	61	2.0	4	0.13	144	4.8
July	82	2.6	77	2.5	3	0.10	162	5.2
August	74	2.4	68	2.2	4	0.13	146	4.7
September	54	1.8	60	2.0	5	0.17	119	4.0
October	76	2.5	74	2.4	4	0.13	154	5.0
November	76	2.5	48	1.6	0	0.00	124	4.1
December	88	2.8	43	1.4	2	0.06	133	4.3
Total	910	2.5	719	2.0	33	0.09	1,662	4.6

- Overall, the highest rates per day of alcohol-impaired driver crashes were in July (5.2), March (5.0), and October (5.0) with the lowest rate per day in September (4.0).
- The highest rate per day of fatal alcohol-impaired driver crashes occurred in September.

Crash Conditions

Alcohol-Impaired Driver Crashes by Day of Week (Utah 2011)

Alcohol-Impaired Driver Crashes								
Day of Week	PDO Crashes		Injury Crashes		Fatal Crashes		Total	
	#	%	#	%	#	%	#	%
Sunday	180	19.8%	139	19.3%	7	21.2%	326	19.6%
Monday	89	9.8%	71	9.9%	1	3.0%	161	9.7%
Tuesday	87	9.6%	68	9.5%	3	9.1%	158	9.5%
Wednesday	90	9.9%	71	9.9%	3	9.1%	164	9.9%
Thursday	94	10.3%	102	14.2%	8	24.2%	204	12.3%
Friday	145	15.9%	101	14.0%	5	15.2%	251	15.1%
Saturday	225	24.7%	167	23.2%	6	18.2%	398	23.9%
Total	910	100.0%	719	100.0%	33	100.0%	1,662	100.0%

- The highest percentage of alcohol-impaired driver total crashes occurred on Saturday and Sunday.
- The highest percentage of alcohol-impaired driver fatal crashes occurred on Thursday and Sunday.

Alcohol-Impaired Driver Crashes by Hour (Utah 2011)

Alcohol-Impaired Driver Crashes								
Hour	PDO Crashes		Injury Crashes		Fatal Crashes		Total	
	#	%	#	%	#	%	#	%
Midnight	65	7.1%	46	6.4%	3	9.1%	114	6.9%
1 a.m.	81	8.9%	52	7.2%	3	9.1%	136	8.2%
2 a.m.	68	7.5%	46	6.4%	2	6.1%	116	7.0%
3 a.m.	47	5.2%	28	3.9%	2	6.1%	77	4.6%
4 a.m.	36	4.0%	18	2.5%	0	0.0%	54	3.2%
5 a.m.	19	2.1%	18	2.5%	1	3.0%	38	2.3%
6 a.m.	19	2.1%	8	1.1%	1	3.0%	28	1.7%
7 a.m.	17	1.9%	8	1.1%	0	0.0%	25	1.5%
8 a.m.	16	1.8%	17	2.4%	0	0.0%	33	2.0%
9 a.m.	17	1.9%	19	2.6%	1	3.0%	37	2.2%
10 a.m.	10	1.1%	8	1.1%	1	3.0%	19	1.1%
11 a.m.	7	0.8%	15	2.1%	0	0.0%	22	1.3%
Noon	20	2.2%	13	1.8%	0	0.0%	33	2.0%
1 p.m.	20	2.2%	17	2.4%	0	0.0%	37	2.2%
2 p.m.	28	3.1%	24	3.3%	0	0.0%	52	3.1%
3 p.m.	25	2.7%	29	4.0%	1	3.0%	55	3.3%
4 p.m.	34	3.7%	27	3.8%	3	9.1%	64	3.9%
5 p.m.	50	5.5%	41	5.7%	2	6.1%	93	5.6%
6 p.m.	51	5.6%	53	7.4%	1	3.0%	105	6.3%
7 p.m.	47	5.2%	40	5.6%	3	9.1%	90	5.4%
8 p.m.	48	5.3%	40	5.6%	2	6.1%	90	5.4%
9 p.m.	62	6.8%	55	7.6%	3	9.1%	120	7.2%
10 p.m.	57	6.3%	55	7.6%	2	6.1%	114	6.9%
11 p.m.	66	7.3%	42	5.8%	2	6.1%	110	6.6%
Total	910	100.0%	719	100.0%	33	100.0%	1,662	100.0%

- Alcohol-impaired driver total crashes peaked in the evening and early morning hours (5:00 p.m. to 2:59 a.m.).
- Fatal alcohol-impaired driver crashes varied by hour.

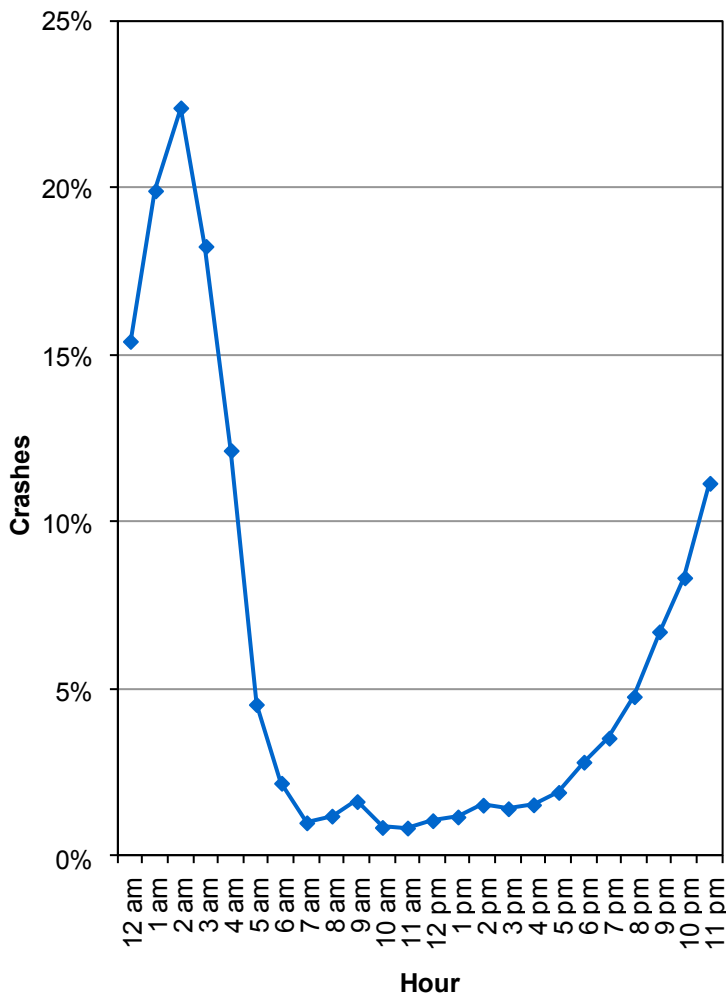
Did you know in 2011:

- 1,662 alcohol-impaired driver crashes occurred in Utah which resulted in 1,019 injured persons and 39 deaths.
- Alcohol-impaired driver crashes were 5.4 times more likely to be fatal than other crashes.
- The number of deaths involving an alcohol-impaired driver increased 56% in 2011 from 2010.

Alcohol-Impaired Drivers

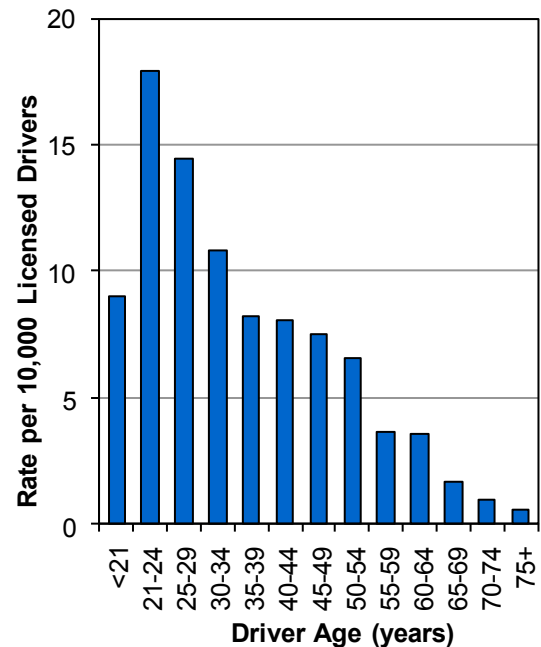


Percent of Total Crashes with an Alcohol-Impaired Driver by Hour (Utah 2011)



- While 3% of total crashes involved an alcohol-impaired driver, 16% of crashes occurring during the hours of 11:00 p.m.-4:59 a.m. involved an alcohol-impaired driver.

Rate of Alcohol-Impaired Drivers in Crashes per Licensed Driver (Utah 2011)



- Drivers aged 21 to 24 years had the highest rates of alcohol-impaired crashes.
- Of the impaired drivers, 178 (11%) were under the age of 21 years.



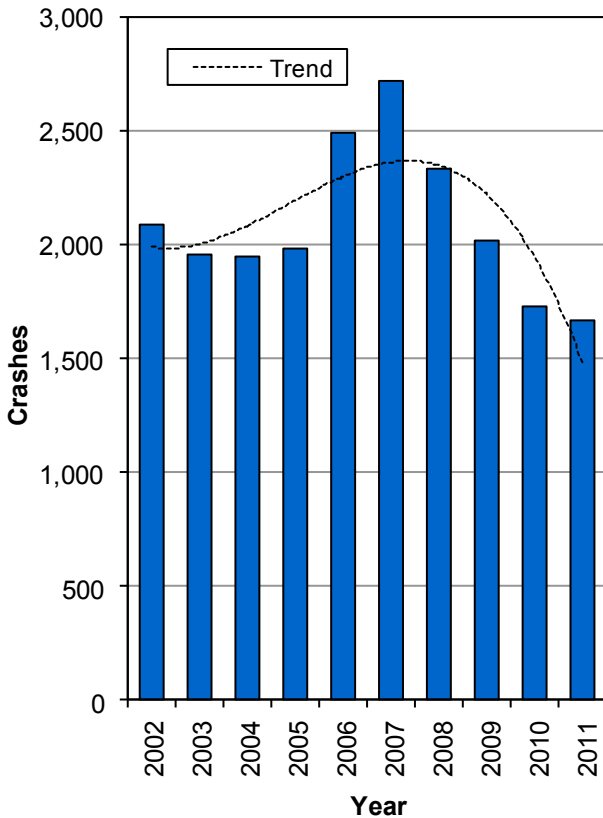
Previous DUI (Utah 2011)

- 15% of the alcohol-impaired drivers in fatal crashes were previously convicted of driving under the influence in the past three years.

Alcohol-Impaired Drivers

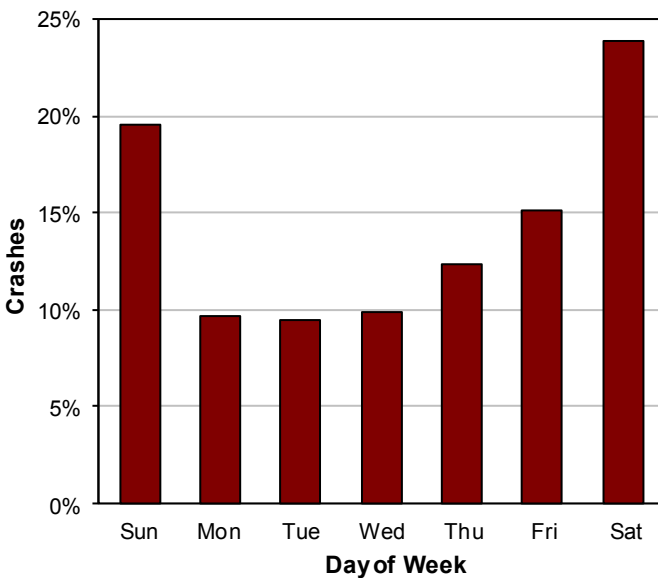


Alcohol-Impaired Driver Crashes (Utah 2002-2011)



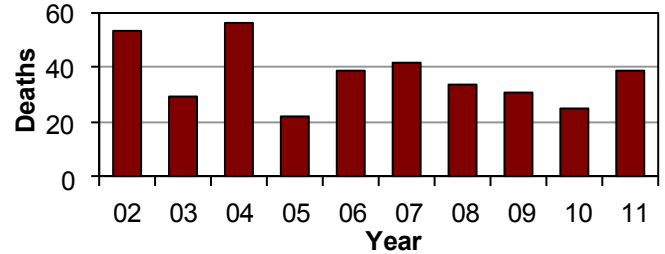
- The number of alcohol-impaired driver crashes has shown a decreasing trend over the last four years.

Alcohol-Impaired Driver Crashes by Day of the Week (Utah 2011)



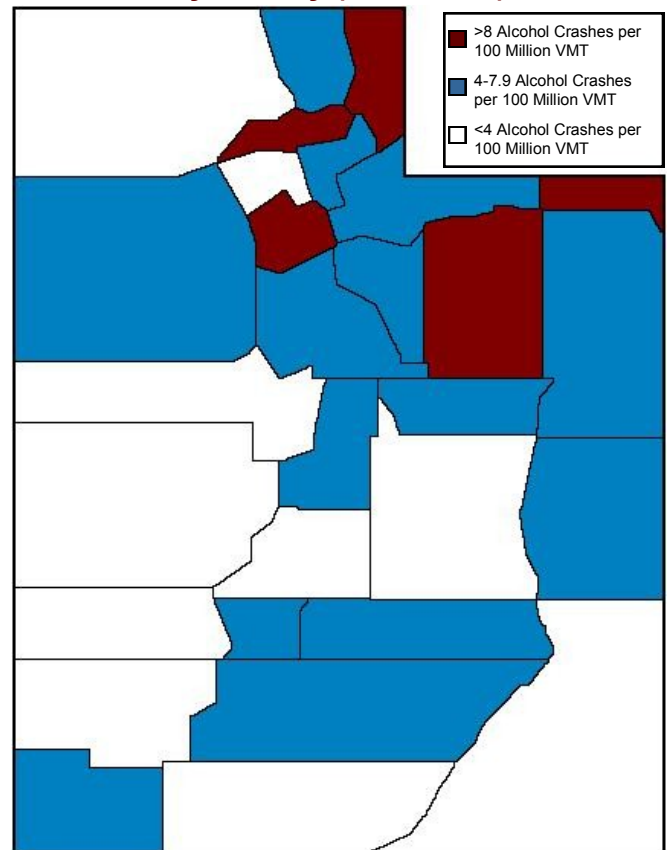
- The highest percentage of alcohol-impaired driver crashes occurred on weekends (44%).

Deaths from Alcohol-Impaired Drivers (Utah 2002-2011)



- The 39 deaths from alcohol-impaired drivers in 2011 was the highest amount since 2007.

Alcohol-Impaired Driver Crashes by County (Utah 2011)



- Daggett, Duchesne, and Salt Lake Counties had the highest rates of alcohol-impaired driver crashes per vehicle miles traveled (VMT).
- Juab, Sevier, and Millard Counties had the lowest rates of alcohol-impaired driver crashes per VMT.