

Alcohol-Impaired Drivers



2

Section 3: Alcohol-Impaired Drivers

0

Trends

Deaths and Fatal Crashes 2003-2012.....	60
Deaths Involving Alcohol-Impaired Drivers.....	60
Crashes 2003-2012.....	61

Crash Conditions

Impaired Driving Crashes by County.....	62
Crash Severity.....	63
Month.....	63
Day of Week.....	64
Hour.....	64

Drivers

Impaired Driver Age.....	65
Impaired Driver Gender.....	66
Impaired Driver BAC in Fatal Crashes.....	66
Previous DUI Convictions of Impaired Drivers.....	66
Drug-Impaired Drivers.....	66

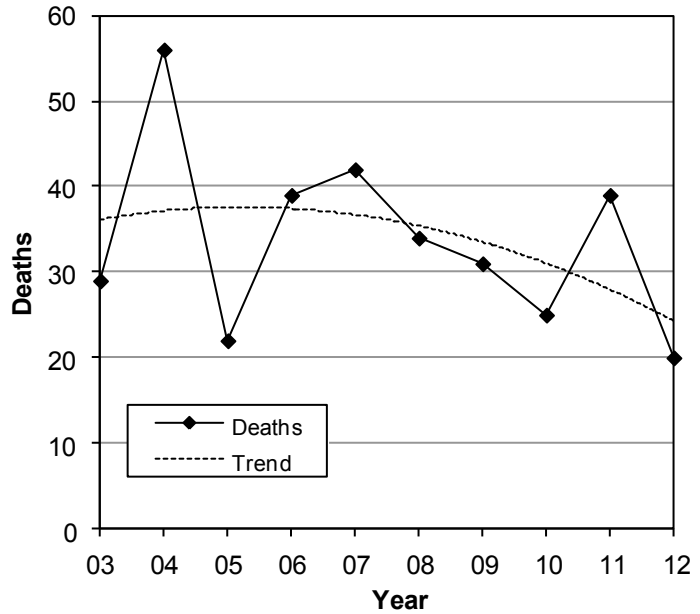
1

2

Trends

Fatal Crashes Involving Alcohol-Impaired Drivers (Utah 2003-2012)

Alcohol-Impaired Driver Crashes						
Year	Deaths			Fatal Crashes		
	All	Alcohol	%	All	Alcohol	%
	#	#	%	#	#	%
2003	309	29	9.4%	262	24	9.2%
2004	296	56	18.9%	260	50	19.2%
2005	282	22	7.8%	235	21	8.9%
2006	287	39	13.6%	249	32	12.9%
2007	299	42	14.0%	260	37	14.2%
2008	276	34	12.3%	244	32	13.1%
2009	244	31	12.7%	217	28	12.9%
2010	253	25	9.9%	218	24	11.0%
2011	243	39	16.0%	224	33	14.7%
2012	217	20	9.2%	200	19	9.5%
Total	2,706	337	12.5%	2,369	300	12.7%



- Over the past 10 years, the percentage of deaths and fatal crashes involving alcohol-impaired drivers has fluctuated around 13% of all deaths and fatal crashes.
- On average, 34 people die a year in Utah from alcohol-impaired driver crashes.

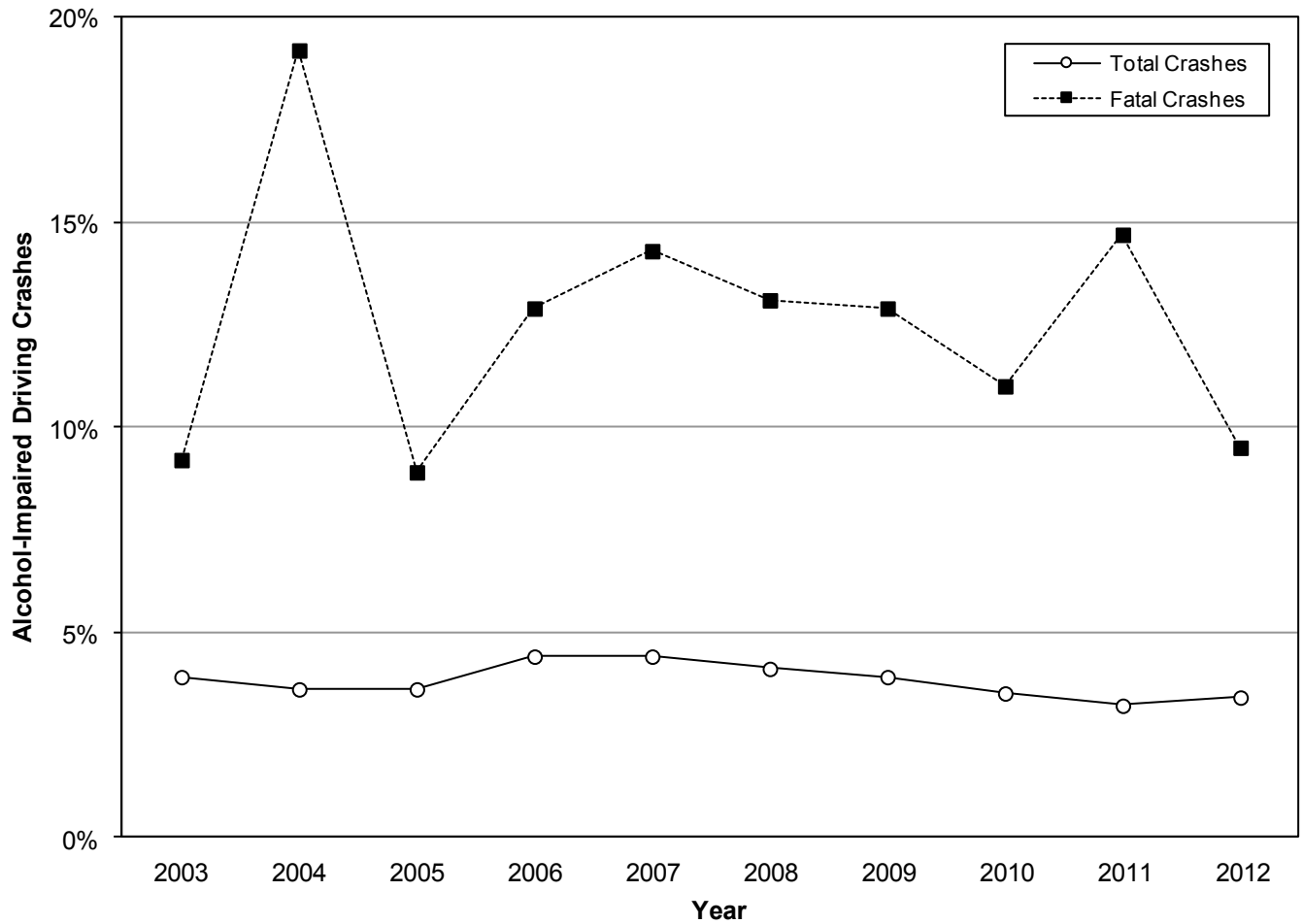
Deaths Involving Alcohol-Impaired Drivers (Utah 2003-2012)

Deaths Involving Alcohol-Impaired Drivers by Person Type of Fatality														
Year	Drunk Driver		Passenger of Drunk Driver		Driver of Another Vehicle		Passenger of Another Vehicle		Pedestrian		Bicyclist		Total	
	#	%	#	%	#	%	#	%	#	%	#	%	#	%
2003	16	55.2%	7	24.1%	2	6.9%	1	3.4%	3	10.3%	0	0.0%	29	100.0%
2004	32	57.1%	12	21.4%	8	14.3%	3	5.4%	1	1.8%	0	0.0%	56	100.0%
2005	13	59.1%	6	27.3%	1	4.5%	0	0.0%	1	4.5%	1	4.5%	22	100.0%
2006	22	56.4%	7	17.9%	3	7.7%	6	15.4%	1	2.6%	0	0.0%	39	100.0%
2007	24	57.1%	9	21.4%	3	7.1%	4	9.5%	2	4.8%	0	0.0%	42	100.0%
2008	24	70.6%	8	23.5%	1	2.9%	1	2.9%	0	0.0%	0	0.0%	34	100.0%
2009	20	64.5%	6	19.4%	3	9.7%	1	3.2%	1	3.2%	0	0.0%	31	100.0%
2010	19	76.0%	3	12.0%	1	4.0%	0	0.0%	2	8.0%	0	0.0%	25	100.0%
2011	26	66.7%	7	17.9%	4	10.3%	1	2.6%	1	2.6%	0	0.0%	39	100.0%
2012	11	55.0%	3	15.0%	3	15.0%	3	15.0%	0	0.0%	0	0.0%	20	100.0%
Total	207	61.4%	68	20.2%	29	8.6%	20	5.9%	12	3.6%	1	0.3%	337	100.0%

- Of the 20 alcohol-impaired driver crash deaths in 2012, 11 (55%) were to the drunk driver, 3 (15%) deaths were to passengers of the drunk driver, and 6 (30%) deaths were to occupants of another vehicle in the crash.
- Over the past 10 years, 61% of deaths involving alcohol-impaired drivers were to the drunk driver, 20% of deaths were to passengers of the drunk driver, 15% of deaths were to occupants of another vehicle in the crash, and 4% were to non-motorists.

Alcohol-Impaired Driver Crashes (Utah 2003-2012)

Alcohol-Impaired Driver Crashes												
Year	Property Damage Only			Injury			Fatal			Total		
	All	Alcohol		All	Alcohol		All	Alcohol		All	Alcohol	
	#	#	%	#	#	%	#	#	%	#	#	%
2003	31,842	904	2.8%	18,285	1,024	5.6%	262	24	9.2%	50,389	1,952	3.9%
2004	34,222	878	2.6%	19,423	1,020	5.3%	260	50	19.2%	53,905	1,948	3.6%
2005	35,158	898	2.6%	19,545	1,058	5.4%	235	21	8.9%	54,938	1,977	3.6%
2006	37,674	1,261	3.3%	18,264	1,195	6.5%	249	32	12.9%	56,187	2,488	4.4%
2007	42,368	1,441	3.4%	18,619	1,240	6.7%	258	37	14.3%	61,245	2,718	4.4%
2008	38,997	1,217	3.1%	17,125	1,081	6.3%	245	32	13.1%	56,367	2,330	4.1%
2009	35,398	1,108	3.1%	15,752	883	5.6%	217	28	12.9%	51,367	2,019	3.9%
2010	34,155	897	2.6%	14,995	802	5.3%	218	24	11.0%	49,368	1,723	3.5%
2011	36,418	910	2.5%	15,645	719	4.6%	224	33	14.7%	52,287	1,662	3.2%
2012	34,635	970	2.8%	15,765	738	4.7%	200	19	9.5%	50,600	1,727	3.4%
Total	360,867	10,484	2.9%	173,418	9,760	5.6%	2,368	300	12.7%	536,653	20,544	3.8%



- Over the past 10 years, 3.8% of total crashes involved alcohol-impaired drivers compared with 12.7% of fatal crashes.
- Over the past 10 years, alcohol-impaired driver crashes were 3.7 times more likely to be fatal than crashes not involving an alcohol-impaired driver.

Crash Conditions

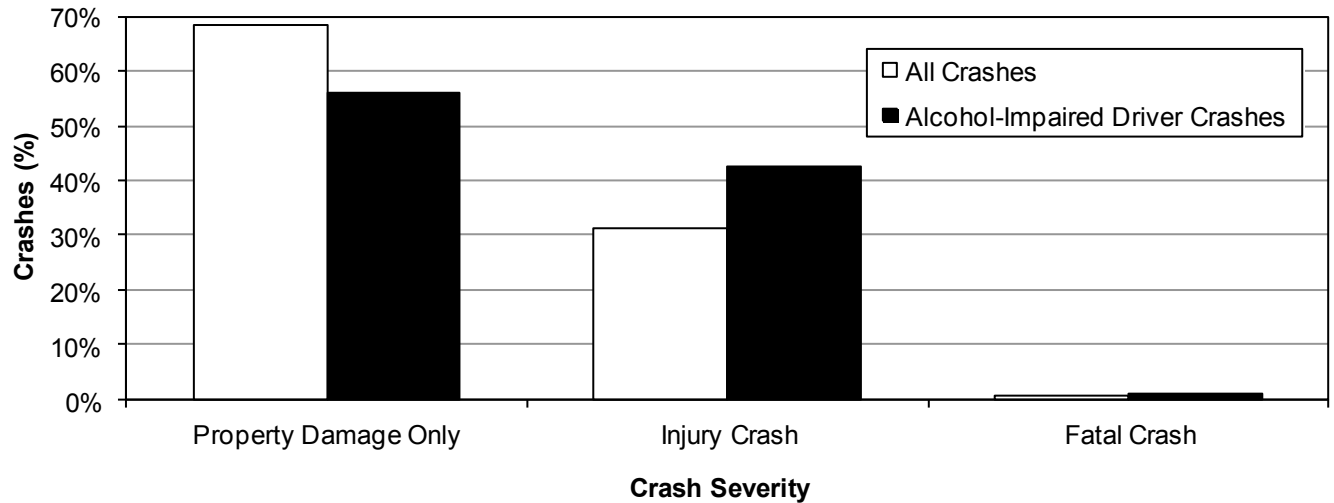
Alcohol-Impaired Driver Crashes by County (Utah 2012)

County	PDO Crashes		Injury Crashes		Fatal Crashes		Total	
	#	Rate per 100 Million VMT	#	Rate per 100 Million VMT	#	Rate per 100 Million VMT	#	Rate per 100 Million VMT
Uintah	24	5.8	24	5.8	1	0.24	49	11.8
Duchesne	15	5.4	16	5.8	0	0.00	31	11.2
Salt Lake	503	5.7	288	3.3	5	0.06	796	9.1
Wasatch	10	3.0	19	5.7	0	0.00	29	8.7
Tooele	34	4.1	32	3.9	3	0.36	69	8.4
Rich	3	6.1	1	2.0	0	0.00	4	8.1
Weber	74	4.6	48	3.0	0	0.00	122	7.6
Summit	29	4.0	22	3.0	3	0.41	54	7.4
Washington	25	1.8	49	3.6	1	0.07	75	5.4
Sanpete	7	3.4	4	1.9	0	0.00	11	5.3
Cache	20	2.3	24	2.7	0	0.00	44	5.0
Carbon	6	2.0	9	2.9	0	0.00	15	4.9
Sevier	6	1.9	9	2.8	0	0.00	15	4.7
Grand	8	2.5	6	1.9	1	0.31	15	4.7
Davis	64	2.5	53	2.1	0	0.00	117	4.6
Millard	8	1.8	11	2.4	2	0.44	21	4.6
Beaver	4	1.6	6	2.4	1	0.40	11	4.4
Wayne	1	2.1	1	2.1	0	0.00	2	4.2
Kane	5	2.9	2	1.2	0	0.00	7	4.1
Box Elder	14	1.6	20	2.3	0	0.00	34	3.9
Morgan	4	3.0	1	0.8	0	0.00	5	3.8
Utah	85	2.2	58	1.5	1	0.03	144	3.8
Piute	0	0.0	1	3.5	0	0.00	1	3.5
Daggett	0	0.0	1	3.3	0	0.00	1	3.3
San Juan	2	0.7	7	2.3	1	0.33	10	3.3
Iron	7	1.0	14	2.0	0	0.00	21	3.0
Emery	5	1.3	6	1.6	0	0.00	11	2.9
Garfield	1	0.9	2	1.8	0	0.00	3	2.7
Juab	6	1.6	4	1.0	0	0.00	10	2.6
Statewide	970	3.6	738	2.8	19	0.07	1,727	6.5

- Uintah (11.8), Duchesne (11.2), Salt Lake (9.1), and Wasatch (8.7) counties had the highest rates of alcohol-impaired driver total crashes per 100 million vehicle miles traveled.
- Juab (2.6), Garfield (2.7), Emery (2.9), and Iron (3.0) counties had the lowest rates of alcohol-impaired driver total crashes per 100 million vehicle miles traveled.

Crash Conditions

Alcohol-Impaired Driver Crash Severity (Utah 2012)



- Alcohol-impaired driver crashes were more likely to have a death or injury than other crashes.
- A higher percentage of alcohol-impaired driver crashes (42.7%) resulted in an injury compared to all motor vehicle crashes that resulted in an injury (31.2%).
- In addition, a higher percentage of alcohol-impaired driver crashes were fatal (1.1%) compared to all motor vehicle crashes (0.4%).

Alcohol-Impaired Driver Crashes by Month (Utah 2012)

Alcohol-Impaired Driver Crashes								
Month	PDO Crashes		Injury Crashes		Fatal Crashes		Total	
	#	Rate per Day	#	Rate per Day	#	Rate per Day	#	Rate per Day
January	78	2.5	50	1.6	0	0.00	128	4.1
February	84	2.9	49	1.7	1	0.03	134	4.6
March	62	2.0	61	2.0	2	0.06	125	4.0
April	77	2.6	50	1.7	2	0.07	129	4.3
May	74	2.4	61	2.0	1	0.03	136	4.4
June	96	3.2	66	2.2	2	0.07	164	5.5
July	75	2.4	65	2.1	1	0.03	141	4.5
August	86	2.8	76	2.5	2	0.06	164	5.3
September	78	2.6	71	2.4	1	0.03	150	5.0
October	83	2.7	63	2.0	3	0.10	149	4.8
November	82	2.7	73	2.4	1	0.03	156	5.2
December	95	3.1	53	1.7	3	0.10	151	4.9
Total	970	2.7	738	2.0	19	0.05	1,727	4.7

- Overall, the highest rates per day of alcohol-impaired driver crashes were in June (5.5), August (5.3), and November (5.2) with the lowest rate per day in March (4.0).
- The highest rate per day of fatal alcohol-impaired driver crashes occurred in October and December.

Crash Conditions

Alcohol-Impaired Driver Crashes by Day of Week (Utah 2011)

Alcohol-Impaired Driver Crashes								
Day of Week	PDO Crashes		Injury Crashes		Fatal Crashes		Total	
	#	%	#	%	#	%	#	%
Sunday	205	21.1%	181	24.5%	4	21.1%	390	22.6%
Monday	94	9.7%	66	8.9%	0	0.0%	160	9.3%
Tuesday	91	9.4%	56	7.6%	1	5.3%	148	8.6%
Wednesday	92	9.5%	74	10.0%	2	10.5%	168	9.7%
Thursday	106	10.9%	75	10.2%	0	0.0%	181	10.5%
Friday	154	15.9%	129	17.5%	3	15.8%	286	16.6%
Saturday	228	23.5%	157	21.3%	9	47.4%	394	22.8%
Total	970	100.0%	738	100.0%	19	100.0%	1,727	100.0%

- The highest percentage of alcohol-impaired driver total crashes occurred on Saturday and Sunday.
- The highest percentage of alcohol-impaired driver fatal crashes occurred on Saturday and Sunday.

Alcohol-Impaired Driver Crashes by Hour (Utah 2011)

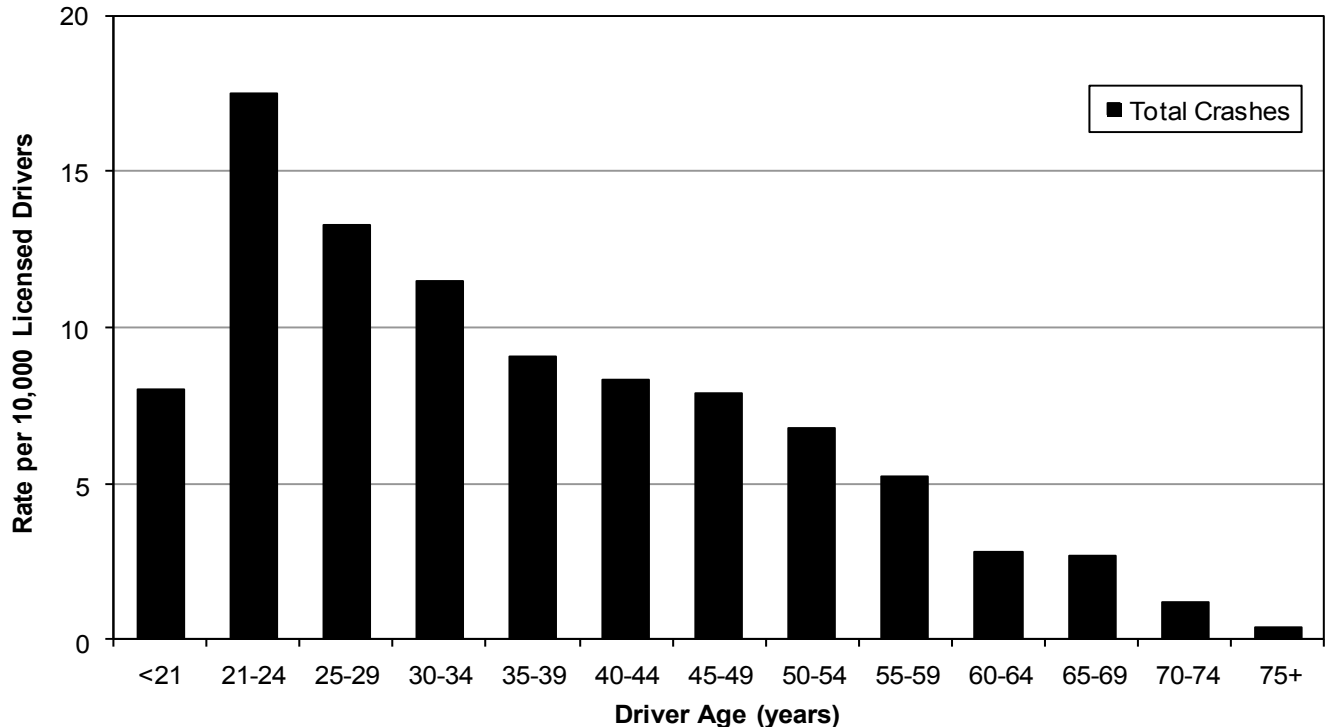
Alcohol-Impaired Driver Crashes								
Hour	PDO Crashes		Injury Crashes		Fatal Crashes		Total	
	#	%	#	%	#	%	#	%
Midnight	86	8.9%	37	5.0%	2	10.5%	125	7.2%
1 a.m.	62	6.4%	47	6.4%	1	5.3%	110	6.4%
2 a.m.	60	6.2%	50	6.8%	0	0.0%	110	6.4%
3 a.m.	52	5.4%	35	4.7%	1	5.3%	88	5.1%
4 a.m.	44	4.5%	29	3.9%	0	0.0%	73	4.2%
5 a.m.	27	2.8%	18	2.4%	1	5.3%	46	2.7%
6 a.m.	16	1.6%	13	1.8%	0	0.0%	29	1.7%
7 a.m.	20	2.1%	11	1.5%	1	5.3%	32	1.9%
8 a.m.	15	1.5%	13	1.8%	0	0.0%	28	1.6%
9 a.m.	14	1.4%	13	1.8%	0	0.0%	27	1.6%
10 a.m.	14	1.4%	14	1.9%	0	0.0%	28	1.6%
11 a.m.	14	1.4%	15	2.0%	0	0.0%	29	1.7%
Noon	22	2.3%	22	3.0%	0	0.0%	44	2.5%
1 p.m.	22	2.3%	16	2.2%	0	0.0%	38	2.2%
2 p.m.	20	2.1%	22	3.0%	1	5.3%	43	2.5%
3 p.m.	30	3.1%	25	3.4%	1	5.3%	56	3.2%
4 p.m.	25	2.6%	32	4.3%	1	5.3%	58	3.4%
5 p.m.	49	5.1%	39	5.3%	2	10.5%	90	5.2%
6 p.m.	62	6.4%	46	6.2%	0	0.0%	108	6.3%
7 p.m.	59	6.1%	50	6.8%	1	5.3%	110	6.4%
8 p.m.	64	6.6%	51	6.9%	2	10.5%	117	6.8%
9 p.m.	50	5.2%	40	5.4%	0	0.0%	90	5.2%
10 p.m.	79	8.1%	53	7.2%	2	10.5%	134	7.8%
11 p.m.	64	6.6%	47	6.4%	3	15.8%	114	6.6%
Total	970	100.0%	738	100.0%	19	100.0%	1,727	100.0%

- Alcohol-impaired driver total crashes peaked in the evening and early morning hours (5:00 p.m. to 3:59 a.m.).
- Fatal alcohol-impaired driver crashes varied by hour.

Drivers

Age of Alcohol-Impaired Drivers in Crashes (Utah 2012)

Age	Alcohol-Impaired Drivers											
	PDO Crashes			Injury Crashes			Fatal Crashes			Total		
	#	%	Rate per 10,000 Drivers	#	%	Rate per 10,000 Drivers	#	%	Rate per 10,000 Drivers	#	%	Rate per 10,000 Drivers
<21	107	11.0%	4.7	74	10.0%	3.3	0	0.0%	0.00	181	10.4%	8.0
21-24	174	17.8%	10.3	119	16.0%	7.0	2	10.5%	0.12	295	17.0%	17.5
25-29	158	16.2%	7.3	127	17.1%	5.9	4	21.1%	0.18	289	16.6%	13.3
30-34	137	14.0%	6.2	116	15.6%	5.2	2	10.5%	0.09	255	14.7%	11.5
35-39	102	10.5%	5.5	63	8.5%	3.4	4	21.1%	0.22	169	9.7%	9.1
40-44	73	7.5%	4.4	64	8.6%	3.9	1	5.3%	0.06	138	7.9%	8.3
45-49	57	5.8%	3.7	63	8.5%	4.1	1	5.3%	0.07	121	7.0%	7.9
50-54	58	5.9%	3.7	47	6.3%	3.0	2	10.5%	0.13	107	6.2%	6.8
55-59	43	4.4%	3.0	30	4.0%	2.1	1	5.3%	0.07	74	4.3%	5.2
60-64	19	1.9%	1.6	11	1.5%	1.0	2	10.5%	0.17	32	1.8%	2.8
65-69	15	1.5%	1.8	8	1.1%	0.9	0	0.0%	0.00	23	1.3%	2.7
70-74	1	0.1%	0.2	6	0.8%	1.0	0	0.0%	0.00	7	0.4%	1.2
75+	1	0.1%	0.1	3	0.4%	0.3	0	0.0%	0.00	4	0.2%	0.4
Unknown	31	3.2%	n/a	12	1.6%	n/a	0	0.0%	n/a	43	2.5%	n/a
Total	976	100.0%	4.9	743	100.0%	3.7	19	100.0%	0.09	1,738	100.0%	8.6



- Drivers aged 21-24 years had the highest rate of total alcohol-impaired driver crashes (17.5).
- Drivers aged 35-39 (0.22) and 25-29 (0.18) years had the highest rate of alcohol-impaired driver fatal crashes.
- 181 (10.4%) of the impaired drivers in total crashes were under the age of 21 years.
- Zero of the 19 (0.0%) impaired drivers in fatal crashes were under the age of 21 years.
- There is a rapid decline of impaired drivers as age increases with less than 10% of impaired drivers over the age of 55 years (7.1%).

Drivers

Gender of Alcohol-Impaired Drivers in Crashes (Utah 2012)

Alcohol-Impaired Drivers								
Gender	PDO Crashes		Injury Crashes		Fatal Crashes		Total	
	#	%	#	%	#	%	#	%
Male	677	69.4%	564	75.9%	15	78.9%	1,256	72.3%
Female	277	28.4%	172	23.1%	4	21.1%	453	26.1%
Unknown	22	2.3%	7	0.9%	0	0.0%	29	1.7%
Total	976	100.0%	743	100.0%	19	100.0%	1,738	100.0%

- Male drivers were much more likely to be an alcohol-impaired driver in a crash. Male drivers represented 72.3% of the impaired drivers in total crashes and 78.9% of impaired drivers in fatal crashes.

Drivers in Fatal Crashes by Blood Alcohol Concentration (Utah 2012)

All Drivers in Fatal Crashes		
BAC	Drivers	
	#	%
.00	133	45.1%
.01 - .07	7	2.4%
.08 - .15	4	1.4%
.16 - .23	9	3.1%
.24 - .31	5	1.7%
.32+	1	0.3%
Not Tested/Unknown	136	46.1%
Total	295	100.0%

- Of the 159 drivers in fatal crashes who were tested for alcohol, 133 (83.6%) had a blood alcohol concentration (BAC) of 0.00, 7 (4.4%) had a BAC of 0.01-0.07, and 19 (11.9%) were over the legal limit of 0.08.
- 14 out of the 19 (78.9%) drivers in fatal crashes who tested over the legal limit for alcohol had BAC levels at or above twice the legal limit of 0.08.

Previous Driving Under the Influence Convictions of Alcohol-Impaired Drivers in Fatal Crashes (Utah 2012)

- Of the 19 alcohol-impaired drivers in fatal crashes, five drivers (26.3%) had been previously convicted of driving under the influence in the past three years.

Drug-Impaired Drivers in Crashes (Utah 2012)

- There were an additional 551 drivers impaired by drugs only, 248 (45.0%) in property damage only crashes, 270 (49.0%) in injury crashes, and 33 (6.0%) in fatal crashes.
- Stimulants (methamphetamine, amphetamine), cannabinoids (marijuana), and depressants (diazepam, nordiazepam) were the most common drugs for drug-impaired drivers in fatal crashes.
- Note: Drug presence does not necessarily imply impairment. For many drug types, drug presence can be detected long after any impairment that might affect driving has passed. Also, whereas the impairment effects for various concentration levels of alcohol is well understood, little evidence is available to link concentrations of other drug types to driver performance. For these reasons, no further analysis of drug-impaired drivers is included.

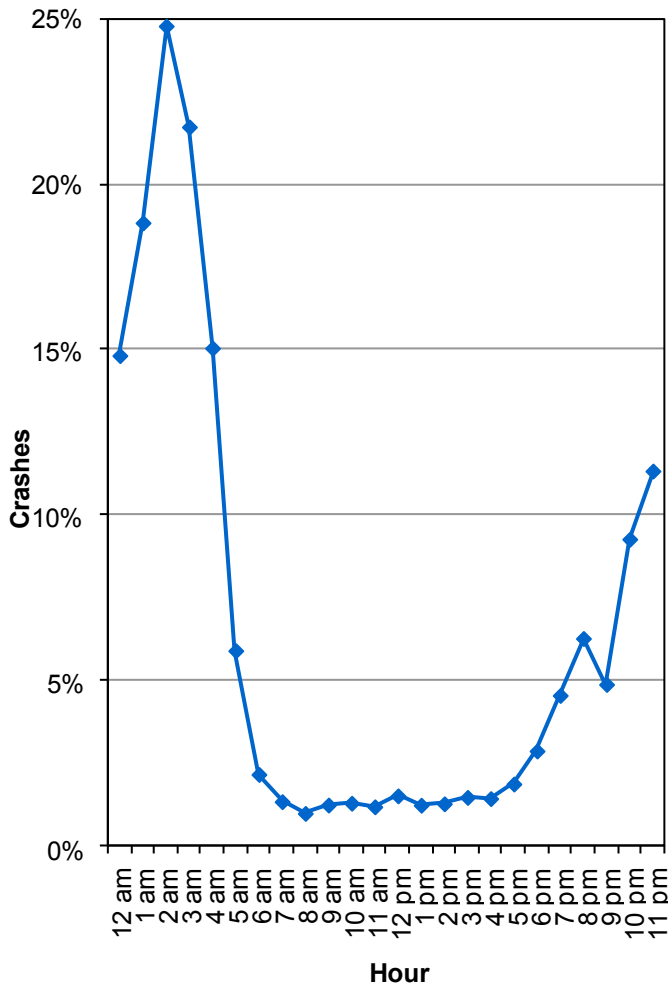
Did you know in 2012:

- 1,727 alcohol-impaired driver crashes occurred in Utah which resulted in 1,043 injured persons and 20 deaths.
- Alcohol-impaired driver crashes were 3.0 times more likely to be fatal than other crashes.
- The number of deaths involving an alcohol-impaired driver decreased 49% in 2012 from 2011.

Alcohol-Impaired Drivers

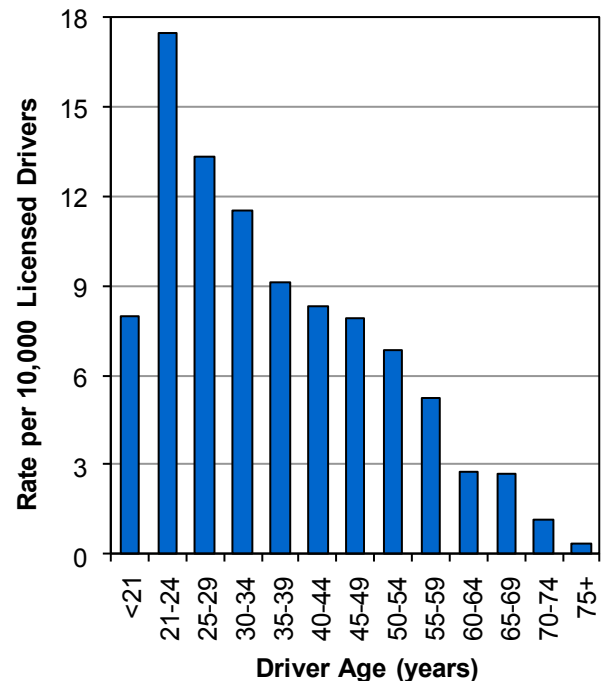


Percent of Total Crashes with an Alcohol-Impaired Driver by Hour (Utah 2012)



- While 3% of total crashes involved an alcohol-impaired driver, 16% of crashes occurring during the hours of 11:00 p.m.-4:59 a.m. involved an alcohol-impaired driver.

Rate of Alcohol-Impaired Drivers in Crashes per Licensed Driver (Utah 2012)



- Drivers aged 21 to 24 years had the highest rates of alcohol-impaired crashes.
- Of the impaired drivers, 181 (10%) were under the age of 21 years.



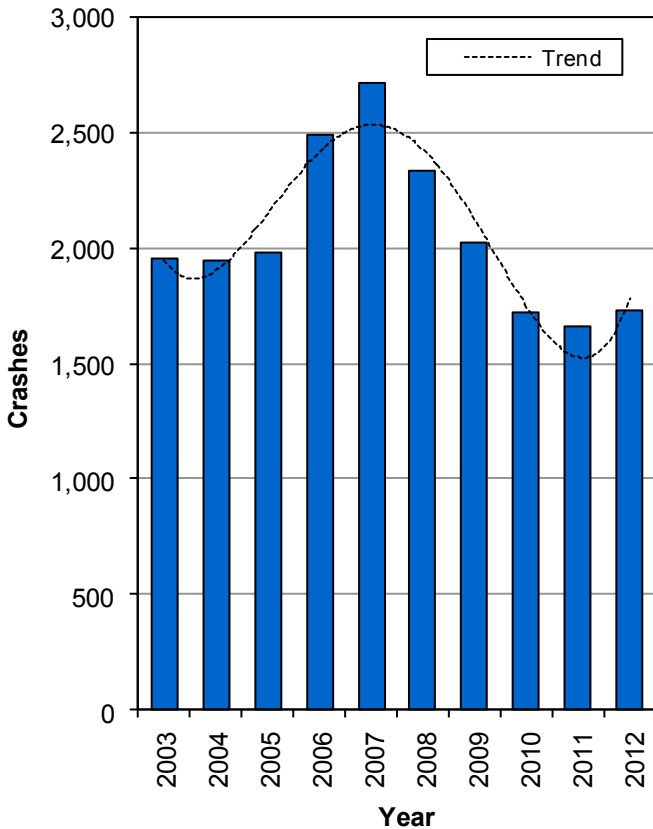
Previous DUI (Utah 2012)

- 26% of the alcohol-impaired drivers in fatal crashes were previously convicted of driving under the influence in the past three years.

Alcohol-Impaired Drivers

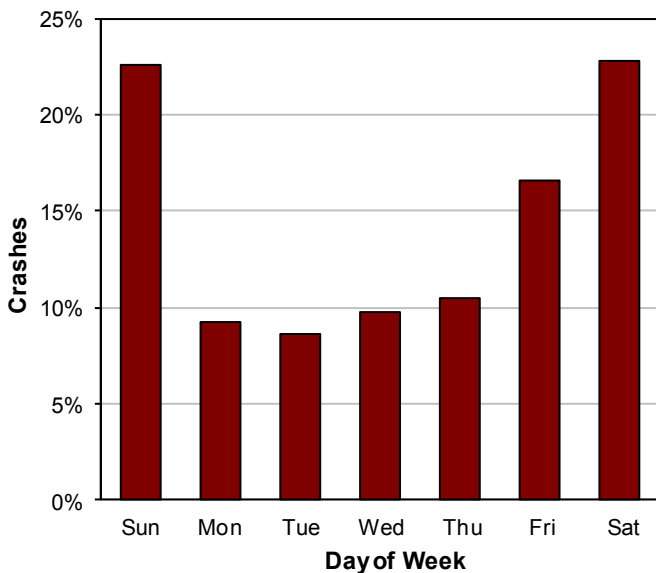


Alcohol-Impaired Driver Crashes (Utah 2003-2012)



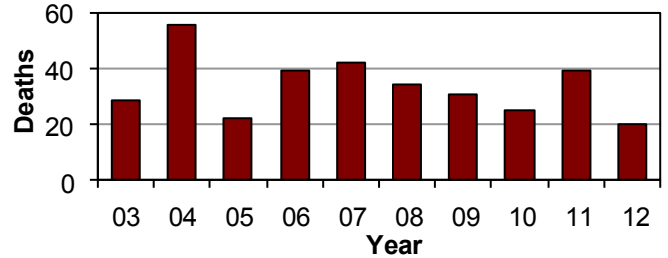
- After decreasing the previous four years, the number of alcohol-impaired driver crashes increased in 2012.

Alcohol-Impaired Driver Crashes by Day of the Week (Utah 2012)



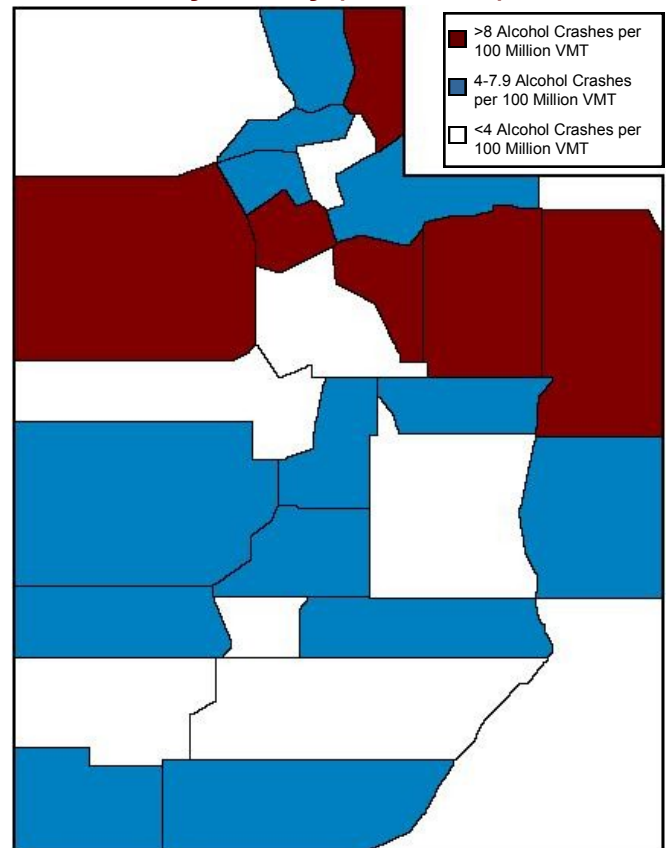
- The highest percentage of alcohol-impaired driver crashes occurred on weekends (45%).

Deaths from Alcohol-Impaired Drivers (Utah 2003-2012)



- The 20 deaths in 2012 was the lowest amount in over 20 years.

Alcohol-Impaired Driver Crashes by County (Utah 2012)



- Uintah, Duchesne, and Salt Lake Counties had the highest rates of alcohol-impaired driver crashes per vehicle miles traveled (VMT).
- Juab, Garfield, and Emery Counties had the lowest rates of alcohol-impaired driver crashes per VMT.