

# Alcohol



## Section 4: Alcohol

2

### Trends

Deaths and Fatal Crashes 2006-2015.....	2
Deaths Involving Drunk Drivers 2006-2015 .....	2
Crashes 2006-2015 .....	3
Crash Rates 2006-2015.....	4
Drunk Drivers in Fataals by Age 2006-2015 .....	4
Fatal Crashes by County 2006-2015 .....	5
Fatal Crashes by Month 2006-2015 .....	6
Fatal Crashes by Day of Week 2006-2015 .....	6
Fatal Crashes by Hour 2006-2015.....	7



### Crash Conditions

County .....	8
Crash Severity .....	9
Month.....	9
Day of Week .....	10
Hour.....	10
% of Crashes Alcohol-Related by Hour .....	11
Persons Involved .....	11
Crashes by Day of Week and Hour .....	12
Previous DUI Convictions of Drunk Drivers .....	12
Driver Age.....	13
Driver Gender .....	14
Vehicle Type.....	14
Driver BAC in Fatal Crashes.....	14

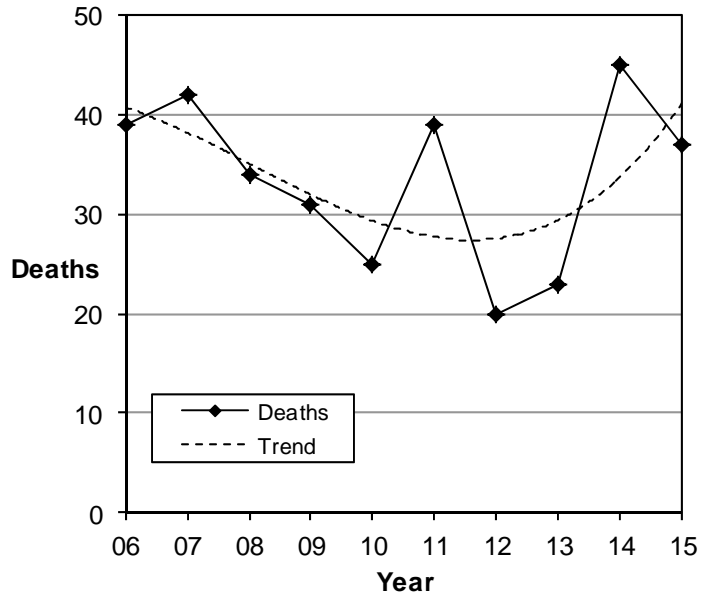
1

5

## Trends

### Fatal Crashes Involving Drunk Drivers (Utah 2006-2015)

Drunk Driver Crashes						
Year	Deaths			Fatal Crashes		
	All	Alcohol		All	Alcohol	
	#	#	%	#	#	%
2006	287	39	13.6%	249	32	12.9%
2007	299	42	14.0%	260	37	14.2%
2008	276	34	12.3%	244	32	13.1%
2009	244	31	12.7%	217	28	12.9%
2010	253	25	9.9%	218	24	11.0%
2011	243	39	16.0%	224	33	14.7%
2012	217	20	9.2%	200	19	9.5%
2013	220	23	10.5%	202	23	11.4%
2014	256	45	17.6%	222	37	16.7%
2015	278	37	13.3%	258	31	12.0%
<b>Total</b>	<b>2,573</b>	<b>335</b>	<b>13.0%</b>	<b>2,294</b>	<b>296</b>	<b>12.9%</b>



- Over the past 10 years, the percentage of deaths and fatal crashes involving drunk drivers has fluctuated around 13% of all deaths and fatal crashes.
- The 45 deaths involving drunk drivers in 2014 was the highest since 2004.
- On average, 34 people die a year in Utah from drunk driver crashes.

### Deaths Involving Drunk Drivers (Utah 2006-2015)

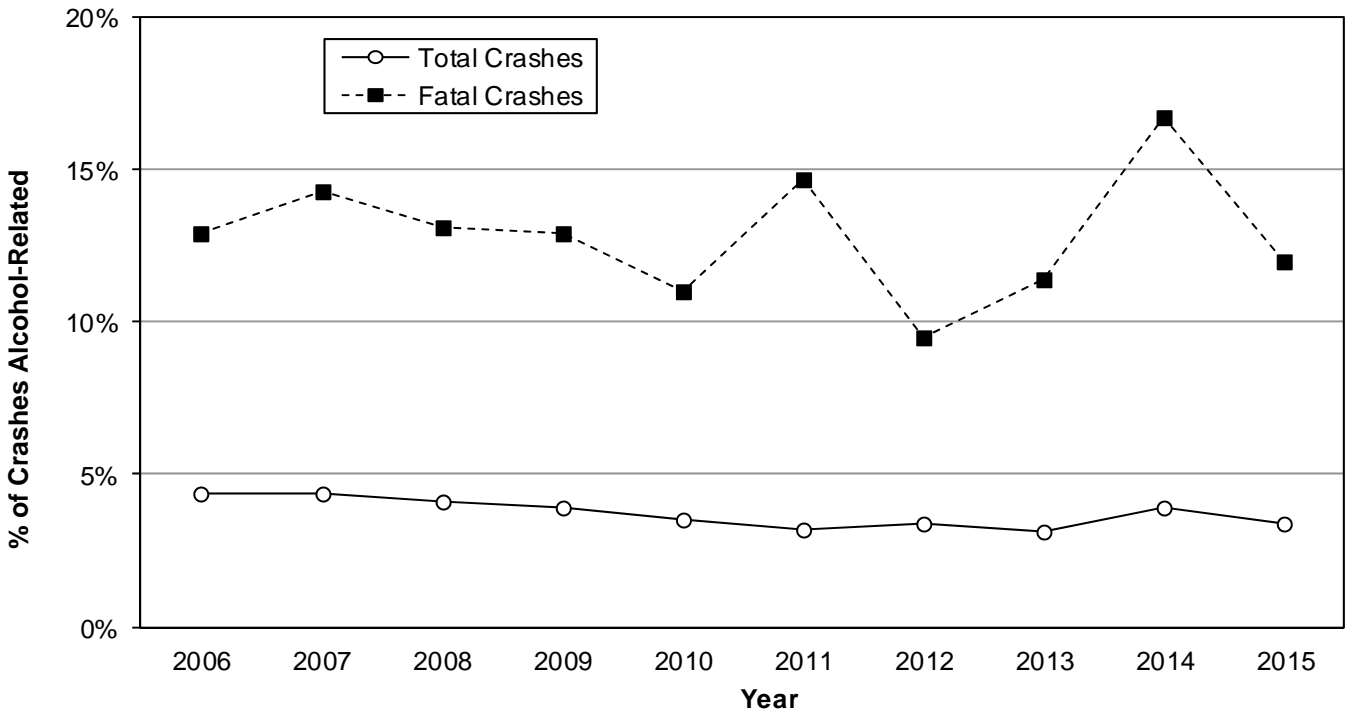
Deaths Involving Drunk Drivers by Person Type of Fatality														
Year	Drunk Driver		Passenger of Drunk Driver		Driver of Another Vehicle		Passenger of Another Vehicle		Pedestrian		Bicyclist		Total	
	#	%	#	%	#	%	#	%	#	%	#	%	#	%
2006	22	56.4%	7	17.9%	3	7.7%	6	15.4%	1	2.6%	0	0.0%	39	100.0%
2007	24	57.1%	9	21.4%	3	7.1%	4	9.5%	2	4.8%	0	0.0%	42	100.0%
2008	24	70.6%	8	23.5%	1	2.9%	1	2.9%	0	0.0%	0	0.0%	34	100.0%
2009	20	64.5%	6	19.4%	3	9.7%	1	3.2%	1	3.2%	0	0.0%	31	100.0%
2010	19	76.0%	3	12.0%	1	4.0%	0	0.0%	2	8.0%	0	0.0%	25	100.0%
2011	26	66.7%	7	17.9%	4	10.3%	1	2.6%	1	2.6%	0	0.0%	39	100.0%
2012	11	55.0%	3	15.0%	3	15.0%	3	15.0%	0	0.0%	0	0.0%	20	100.0%
2013	17	73.9%	4	17.4%	1	4.3%	0	0.0%	1	4.3%	0	0.0%	23	100.0%
2014	22	48.9%	8	17.8%	4	8.9%	5	11.1%	5	11.1%	1	2.2%	45	100.0%
2015	25	67.6%	6	16.2%	3	8.1%	1	2.7%	1	2.7%	1	2.7%	37	100.0%
<b>Total</b>	<b>210</b>	<b>62.7%</b>	<b>61</b>	<b>18.2%</b>	<b>26</b>	<b>7.8%</b>	<b>22</b>	<b>6.6%</b>	<b>14</b>	<b>4.2%</b>	<b>2</b>	<b>0.6%</b>	<b>335</b>	<b>100.0%</b>

- Of the 37 drunk driver crash deaths in 2015, 25 (68%) were to the drunk driver, 6 (16%) deaths were to passengers of the drunk driver, 4 (11%) were occupants of other vehicles, and 2 (5%) were non-motorists.
- Over the past 10 years, 63% of deaths involving drunk drivers were to the drunk driver, 18% of deaths were to passengers of the drunk driver, 14% of deaths were to occupants of another vehicle in the crash, and 5% were to non-motorists.

# Trends

## Alcohol-Related Driver Crashes (Utah 2006-2015)

Year	Property Damage Only			Injury			Fatal			Total		
	All	Alcohol		All	Alcohol		All	Alcohol		All	Alcohol	
	#	#	%	#	#	%	#	#	%	#	#	%
2006	37,674	1,261	3.3%	18,264	1,195	6.5%	249	32	12.9%	<b>56,187</b>	<b>2,488</b>	<b>4.4%</b>
2007	42,368	1,441	3.4%	18,619	1,240	6.7%	258	37	14.3%	<b>61,245</b>	<b>2,718</b>	<b>4.4%</b>
2008	38,997	1,217	3.1%	17,125	1,081	6.3%	245	32	13.1%	<b>56,367</b>	<b>2,330</b>	<b>4.1%</b>
2009	35,398	1,108	3.1%	15,752	883	5.6%	217	28	12.9%	<b>51,367</b>	<b>2,019</b>	<b>3.9%</b>
2010	34,155	897	2.6%	14,995	802	5.3%	218	24	11.0%	<b>49,368</b>	<b>1,723</b>	<b>3.5%</b>
2011	36,418	910	2.5%	15,645	719	4.6%	224	33	14.7%	<b>52,287</b>	<b>1,662</b>	<b>3.2%</b>
2012	34,635	970	2.8%	15,765	738	4.7%	200	19	9.5%	<b>50,600</b>	<b>1,727</b>	<b>3.4%</b>
2013	39,301	953	2.4%	16,134	760	4.7%	202	23	11.4%	<b>55,637</b>	<b>1,736</b>	<b>3.1%</b>
2014	37,388	1,155	3.1%	16,426	938	5.7%	222	37	16.7%	<b>54,036</b>	<b>2,130</b>	<b>3.9%</b>
2015	42,089	1,160	2.8%	17,665	830	4.7%	258	31	12.0%	<b>60,012</b>	<b>2,021</b>	<b>3.4%</b>
<b>Total</b>	<b>378,423</b>	<b>11,072</b>	<b>2.9%</b>	<b>166,390</b>	<b>9,186</b>	<b>5.5%</b>	<b>2,293</b>	<b>296</b>	<b>12.9%</b>	<b>547,106</b>	<b>20,554</b>	<b>3.8%</b>



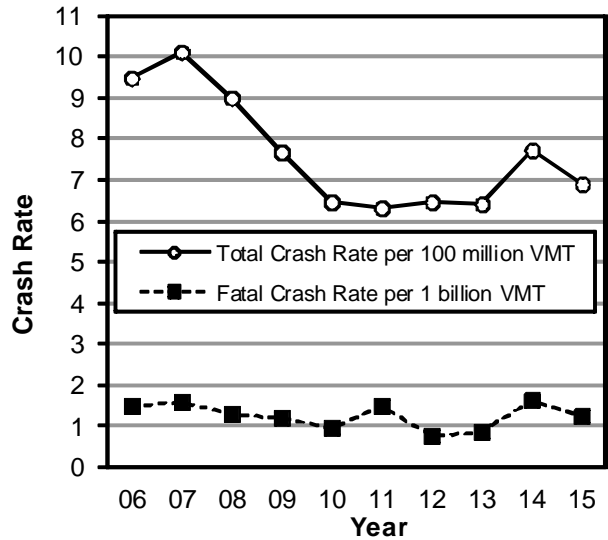
- Over the past 10 years, 3.8% of total crashes involved alcohol-related drivers compared with 12.9% of fatal crashes.
- Over the past 10 years, alcohol-related driver crashes were 3.8 times more likely to be fatal than crashes not involving an alcohol-related driver.

Note: A non-fatal crash is considered alcohol-related when the driver was cited for driving under the influence, at least one driver had a blood alcohol concentration of .08 grams per deciliter or above, or if the investigating officer suspected the driver used alcohol. An alcohol-impaired driver fatal crash is a crash resulting in one or more deaths involving at least one driver with a blood alcohol concentration of .08 grams per deciliter or above.

# Trends

## Alcohol-Related Driver Crash Rates (Utah 2006-2015)

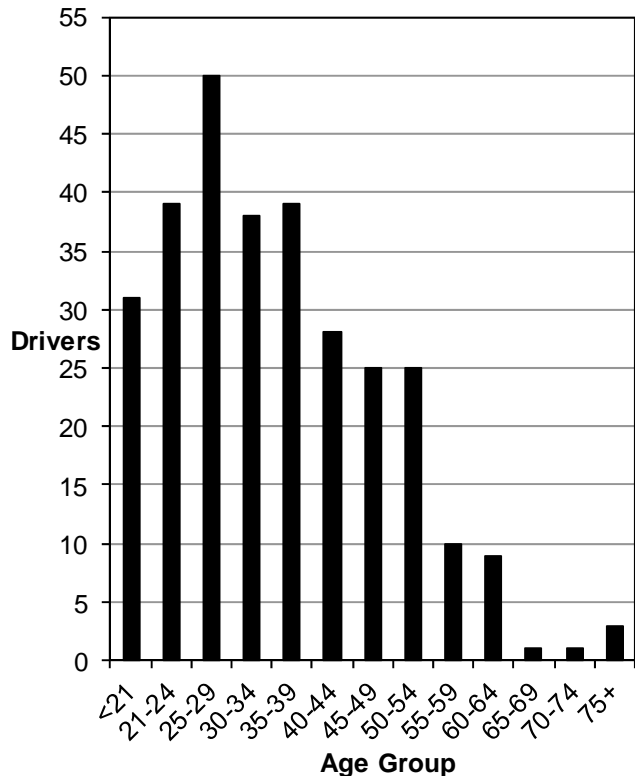
Alcohol-Related Driver Crashes				
Year	Alcohol Crashes		Alcohol Deaths	
	#	Rate per 100 million vehicle miles traveled	#	Rate per 100 million vehicle miles traveled
2006	2,488	9.51	39	0.149
2007	2,718	10.13	42	0.157
2008	2,330	9.00	34	0.131
2009	2,019	7.70	31	0.118
2010	1,723	6.47	25	0.094
2011	1,662	6.30	39	0.148
2012	1,727	6.48	20	0.075
2013	1,736	6.43	23	0.085
2014	2,130	7.72	45	0.163
2015	2,021	6.88	37	0.126
<b>Total</b>	<b>20,554</b>	<b>7.65</b>	<b>335</b>	<b>0.125</b>



- Over the past 10 years, the year 2007 had the highest rate (10.13) of alcohol crashes per 100 million vehicle miles traveled while the year 2011 had the lowest rate (6.30).
- Over the past 10 years, the year 2014 had the highest rate (0.163) of deaths involving a drunk driver per 100 million vehicle miles traveled while the year 2012 had the lowest rate (0.075).

## Drunk Drivers in Fatal Crashes by Age (Utah 2006-2015)

Drunk Drivers in Fatal Crashes												
Age	Year										Total	
	06	07	08	09	10	11	12	13	14	15	#	%
<21	6	7	2	2	3	4	0	2	2	3	31	10.4%
21-24	5	5	4	3	3	6	2	1	5	5	39	13.0%
25-29	9	4	5	2	5	7	4	3	7	4	50	16.7%
30-34	3	2	6	3	5	5	2	4	2	6	38	12.7%
35-39	2	7	6	3	1	3	4	1	8	4	39	13.0%
40-44	2	3	3	6	3	0	1	4	4	2	28	9.4%
45-49	3	4	1	6	2	4	1	2	1	1	25	8.4%
50-54	1	3	3	1	2	2	2	1	5	5	25	8.4%
55-59	1	2	0	1	1	0	1	2	1	1	10	3.3%
60-64	0	0	1	1	0	1	2	2	2	0	9	3.0%
65-69	0	0	0	0	0	1	0	0	0	0	1	0.3%
70-74	0	0	1	0	0	0	0	0	0	0	1	0.3%
75+	1	0	1	0	0	0	0	1	0	0	3	1.0%
<b>Unk</b>	0	0	0	0	0	0	0	0	0	0	<b>0</b>	<b>0.0%</b>
<b>Total</b>	<b>33</b>	<b>37</b>	<b>33</b>	<b>28</b>	<b>25</b>	<b>33</b>	<b>19</b>	<b>23</b>	<b>37</b>	<b>31</b>	<b>299</b>	<b>100.0%</b>



- Over the past 10 years, drivers aged 21-39 years had the highest number of drunk drivers in fatal crashes.
- Over the past 10 years, drivers aged 55+ years had the lowest number of drunk drivers in fatal crashes.

## Trends

### Fatal Crashes Involving Drunk Drivers by County (Utah 2006-2015)

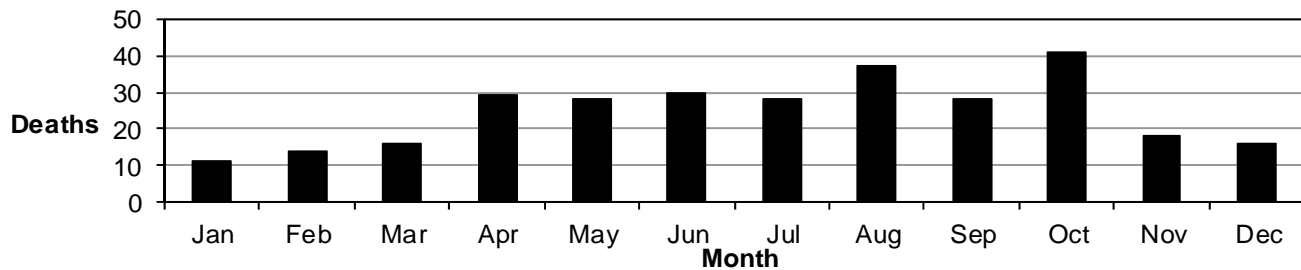
Fatal Crashes Involving Drunk Drivers												
County	Year										Total	
	2006	2007	2008	2009	2010	2011	2012	2013	2014	2015	#	%
Salt Lake	10	8	6	5	3	8	5	3	17	10	75	25.3%
Utah	0	4	5	0	2	1	1	3	2	3	21	7.1%
Davis	3	1	2	1	3	2	0	2	2	1	17	5.7%
Summit	1	1	4	2	1	1	3	0	0	3	16	5.4%
Weber	3	4	0	3	1	1	0	1	1	2	16	5.4%
Tooele	2	3	3	1	1	0	3	1	1	0	15	5.1%
Washington	3	0	5	1	0	0	1	2	1	1	14	4.7%
Uintah	2	1	1	0	2	1	1	0	4	1	13	4.4%
Duchesne	0	0	0	2	2	3	0	3	2	0	12	4.1%
San Juan	1	2	2	1	1	1	1	0	1	2	12	4.1%
Grand	0	0	0	3	2	1	1	1	0	2	10	3.4%
Box Elder	2	2	0	1	1	0	0	0	1	1	8	2.7%
Cache	1	0	0	1	0	2	0	2	2	0	8	2.7%
Carbon	0	2	0	0	0	3	0	1	1	1	8	2.7%
Iron	1	2	0	0	1	2	0	1	0	0	7	2.4%
Juab	0	3	0	0	2	1	0	1	0	0	7	2.4%
Millard	0	0	0	2	0	0	2	1	1	1	7	2.4%
Emery	0	1	1	1	1	1	0	0	0	1	6	2.0%
Morgan	0	0	2	0	0	2	0	0	0	0	4	1.4%
Wasatch	0	0	0	1	1	1	0	0	0	1	4	1.4%
Kane	1	0	1	1	0	0	0	0	0	0	3	1.0%
Piute	1	1	0	0	0	1	0	0	0	0	3	1.0%
Rich	1	0	0	1	0	0	0	0	1	0	3	1.0%
Beaver	0	0	0	1	0	0	1	0	0	0	2	0.7%
Garfield	0	0	0	0	0	1	0	1	0	0	2	0.7%
Sanpete	0	2	0	0	0	0	0	0	0	0	2	0.7%
Wayne	0	0	0	0	0	0	0	0	0	1	1	0.3%
Daggett	0	0	0	0	0	0	0	0	0	0	0	0.0%
Sevier	0	0	0	0	0	0	0	0	0	0	0	0.0%
<b>Total</b>	<b>32</b>	<b>37</b>	<b>32</b>	<b>28</b>	<b>24</b>	<b>33</b>	<b>19</b>	<b>23</b>	<b>37</b>	<b>31</b>	<b>296</b>	<b>100.0%</b>

- Over the past 10 years, Salt Lake County accounted for over one-fourth (25.3%) of the fatal crashes involving drunk drivers.
- Salt Lake, Utah, Davis, Summit, and Weber counties had the highest number of fatal crashes involving drunk drivers over the past 10 years.
- Daggett and Sevier counties had no fatal crashes involving drunk drivers over the past 10 years.

## Trends

### Fatal Crashes Involving Drunk Drivers by Month (Utah 2006-2015)

Fatal Crashes Involving Drunk Drivers												
Month	Year										Total	
	2006	2007	2008	2009	2010	2011	2012	2013	2014	2015	#	%
January	3	1	1	0	1	1	0	0	3	1	11	3.7%
February	4	1	3	0	0	1	1	2	0	2	14	4.7%
March	1	2	3	0	2	4	2	1	0	1	16	5.4%
April	1	4	2	3	2	3	2	4	4	4	29	9.8%
May	1	3	1	7	0	2	1	1	6	6	28	9.5%
June	3	4	3	3	3	4	2	2	2	4	30	10.1%
July	1	5	3	2	2	3	1	4	5	2	28	9.5%
August	4	3	5	5	5	4	2	2	3	4	37	12.5%
September	3	6	2	2	1	5	1	2	4	2	28	9.5%
October	7	5	2	4	5	4	3	3	5	3	41	13.9%
November	2	3	4	0	2	0	1	2	2	2	18	6.1%
December	2	0	3	2	1	2	3	0	3	0	16	5.4%
<b>Total</b>	<b>32</b>	<b>37</b>	<b>32</b>	<b>28</b>	<b>24</b>	<b>33</b>	<b>19</b>	<b>23</b>	<b>37</b>	<b>31</b>	<b>296</b>	<b>100.0%</b>



- Over the past 10 years, October, August, and June were the months with the highest number of fatal crashes involving a drunk driver.
- Over the past 10 years, January and February had the lowest number of fatal crashes involving a drunk driver.

### Fatal Crashes Involving Drunk Drivers by Day of Week (Utah 2006-2015)

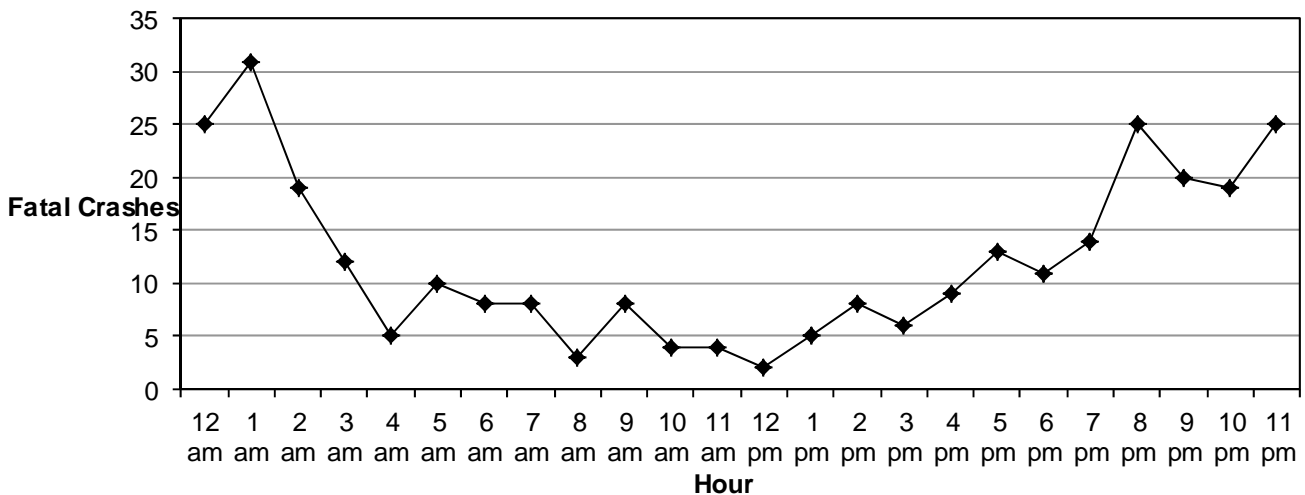
Fatal Crashes Involving Drunk Drivers												
Day of Week	Year										Total	
	2006	2007	2008	2009	2010	2011	2012	2013	2014	2015	#	%
Sunday	7	8	4	5	2	7	4	5	2	8	52	17.6%
Monday	1	2	2	6	6	1	0	2	4	0	24	8.1%
Tuesday	3	2	2	1	2	3	1	4	3	2	23	7.8%
Wednesday	3	4	3	4	2	3	2	3	2	4	30	10.1%
Thursday	4	3	7	3	3	8	0	3	7	4	42	14.2%
Friday	4	4	5	3	2	5	3	3	5	2	36	12.2%
Saturday	10	14	9	6	7	6	9	3	14	11	89	30.1%
<b>Total</b>	<b>32</b>	<b>37</b>	<b>32</b>	<b>28</b>	<b>24</b>	<b>33</b>	<b>19</b>	<b>23</b>	<b>37</b>	<b>31</b>	<b>296</b>	<b>100.0%</b>

- Over the past 10 years, Saturday and Sunday had the highest number of fatal crashes involving a drunk driver.
- Over the past 10 years, Tuesday and Monday had the lowest number of fatal crashes involving a drunk driver.

# Trends

## Fatal Crashes Involving Drunk Drivers by Hour (Utah 2006-2015)

Hour	Year										Total	
	2006	2007	2008	2009	2010	2011	2012	2013	2014	2015	#	%
Midnight	2	5	2	6	1	3	2	0	2	2	25	8.5%
1 a.m.	8	4	3	3	1	3	1	3	4	1	31	10.5%
2 a.m.	4	1	4	0	1	2	0	2	2	3	19	6.5%
3 a.m.	1	3	0	1	1	2	1	0	1	2	12	4.1%
4 a.m.	0	0	0	1	1	0	0	0	2	1	5	1.7%
5 a.m.	0	2	1	0	0	1	1	1	1	3	10	3.4%
6 a.m.	2	0	1	0	2	1	0	0	1	1	8	2.7%
7 a.m.	1	0	2	0	1	0	1	2	0	1	8	2.7%
8 a.m.	0	0	0	2	0	0	0	1	0	0	3	1.0%
9 a.m.	2	0	0	1	2	1	0	0	1	1	8	2.7%
10 a.m.	0	0	1	2	0	1	0	0	0	0	4	1.4%
11 a.m.	0	2	1	0	0	0	0	1	0	0	4	1.4%
Noon	0	0	2	0	0	0	0	0	0	0	2	0.7%
1 p.m.	0	0	0	2	0	0	0	1	2	0	5	1.7%
2 p.m.	1	1	0	0	2	0	1	1	2	0	8	2.7%
3 p.m.	0	1	1	1	1	1	1	0	0	0	6	2.0%
4 p.m.	0	0	0	1	0	3	1	0	1	3	9	3.1%
5 p.m.	2	0	0	1	1	2	2	1	1	3	13	4.4%
6 p.m.	0	1	0	1	0	1	0	1	4	3	11	3.7%
7 p.m.	1	2	2	0	2	3	1	1	2	0	14	4.8%
8 p.m.	1	4	3	4	2	2	2	3	4	0	25	8.5%
9 p.m.	3	4	4	1	1	3	0	1	2	1	20	6.8%
10 p.m.	1	3	2	1	1	2	2	3	2	2	19	6.5%
11 p.m.	3	3	2	0	4	2	3	1	3	4	25	8.5%
<b>Total</b>	<b>32</b>	<b>36</b>	<b>31</b>	<b>28</b>	<b>24</b>	<b>33</b>	<b>19</b>	<b>23</b>	<b>37</b>	<b>31</b>	<b>294</b>	<b>100.0%</b>



- Over the past 10 years, nighttime (8:00 p.m. –2:59 a.m.) had the highest number of fatal crashes involving a drunk driver.
- Over the past 10 years, mid-day (4:00 a.m.—4:59 p.m.) had the lowest number of fatal crashes involving a drunk driver.

## Crash Conditions

### Alcohol-Related Driver Crashes by County (Utah 2015)

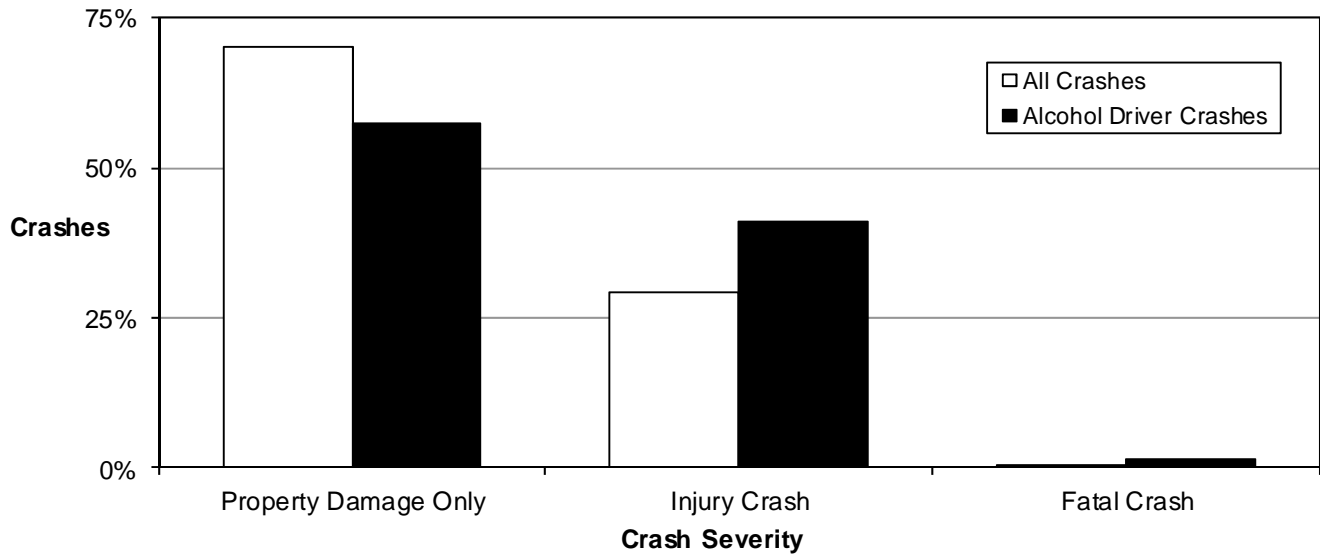
Alcohol-Related Driver Crashes								
County	PDO Crashes		Injury Crashes		Fatal Crashes		Total	
	#	Rate per 100 Million VMT	#	Rate per 100 Million VMT	#	Rate per 100 Million VMT	#	Rate per 100 Million VMT
Salt Lake	598	6.3	378	4.0	10	0.11	986	10.4
Wayne	2	3.8	2	3.8	1	1.91	5	9.6
Weber	88	5.0	62	3.6	2	0.11	152	8.7
Garfield	3	2.4	6	4.9	0	0.00	9	7.3
Uintah	15	3.4	13	3.0	1	0.23	29	6.6
Piute	1	3.2	1	3.2	0	0.00	2	6.5
Sanpete	4	1.7	10	4.2	0	0.00	14	5.9
Summit	27	3.3	16	2.0	3	0.37	46	5.6
Morgan	5	3.5	3	2.1	0	0.00	8	5.6
Wasatch	9	2.3	12	3.0	1	0.25	22	5.6
Cache	25	2.6	28	2.9	0	0.00	53	5.6
Utah	140	3.2	96	2.2	3	0.07	239	5.4
Tooele	24	2.8	22	2.5	0	0.00	46	5.3
Grand	7	1.8	11	2.9	2	0.53	20	5.3
Davis	90	3.2	53	1.9	1	0.04	144	5.1
Washington	38	2.4	40	2.6	1	0.06	79	5.0
Duchesne	11	3.4	5	1.5	0	0.00	16	4.9
Carbon	9	2.6	5	1.4	1	0.29	15	4.3
Sevier	5	1.4	10	2.9	0	0.00	15	4.3
Iron	16	2.0	17	2.1	0	0.00	33	4.2
San Juan	3	0.9	6	1.9	2	0.62	11	3.4
Emery	4	1.0	8	2.1	1	0.26	13	3.4
Kane	3	2.0	2	1.3	0	0.00	5	3.3
Daggett	0	0.0	1	3.0	0	0.00	1	3.0
Box Elder	15	1.5	13	1.3	1	0.10	29	3.0
Millard	8	1.5	6	1.1	1	0.19	15	2.8
Beaver	6	2.1	2	0.7	0	0.00	8	2.8
Rich	1	1.9	0	0.0	0	0.00	1	1.9
Juab	3	0.7	2	0.5	0	0.00	5	1.2
Statewide	1,160	3.9	830	2.8	31	0.11	2,021	6.9

- Salt Lake (10.4), Wayne (9.6), and Weber (8.7) counties had the highest rates of alcohol-related driver total crashes per 100 million vehicle miles traveled.
- Rich (1.9), Daggett (3.0), and Piute (6.5) counties had the lowest rates of alcohol-related driver total crashes per 100 million vehicle miles traveled.
- Salt Lake County had nearly one-half (48.8%) of the fatal drunk driver crashes.



## Crash Conditions

### Alcohol-Related Driver Crash Severity (Utah 2015)



- Alcohol-related driver crashes were more likely to have a death or injury than other crashes.
- A higher percentage of alcohol-related driver crashes (41.1%) resulted in an injury compared to all motor vehicle crashes that resulted in an injury (29.4%).
- In addition, a higher percentage of alcohol-related driver crashes were fatal (1.5%) compared to all motor vehicle crashes (0.4%).

### Alcohol-Related Driver Crashes by Month (Utah 2015)

Alcohol-Related Driver Crashes								
Month	PDO Crashes		Injury Crashes		Fatal Crashes		Total	
	#	Rate per Day	#	Rate per Day	#	Rate per Day	#	Rate per Day
January	128	4.1	64	2.1	1	0.03	193	6.2
February	90	3.2	59	2.1	2	0.07	151	5.4
March	103	3.3	66	2.1	1	0.03	170	5.5
April	87	2.9	66	2.2	4	0.13	157	5.2
May	99	3.2	76	2.5	6	0.19	181	5.8
June	88	2.9	74	2.5	4	0.13	166	5.5
July	98	3.2	69	2.2	2	0.06	169	5.5
August	95	3.1	83	2.7	4	0.13	182	5.9
September	95	3.2	64	2.1	2	0.07	161	5.4
October	87	2.8	78	2.5	3	0.10	168	5.4
November	107	3.6	74	2.5	2	0.07	183	6.1
December	83	2.7	57	1.8	0	0.00	140	4.5
Total	1,160	3.2	830	2.3	31	0.08	2,021	5.5

- Overall, the highest rates per day of alcohol-related driver crashes were in January (6.2) and November (6.1) with the lowest rate per day in December (4.5) and April (5.2).
- The highest rate per day of fatal drunk driver crashes occurred in May, April, June, and August.

## Crash Conditions

### Alcohol-Related Driver Crashes by Day of Week (Utah 2015)

Alcohol-Related Driver Crashes								
Day of Week	PDO Crashes		Injury Crashes		Fatal Crashes		Total	
	#	%	#	%	#	%	#	%
Sunday	242	20.9%	172	20.7%	8	25.8%	422	20.9%
Monday	104	9.0%	79	9.5%	0	0.0%	183	9.1%
Tuesday	115	9.9%	76	9.2%	2	6.5%	193	9.5%
Wednesday	117	10.1%	90	10.8%	4	12.9%	211	10.4%
Thursday	130	11.2%	95	11.4%	4	12.9%	229	11.3%
Friday	170	14.7%	149	18.0%	2	6.5%	321	15.9%
Saturday	282	24.3%	169	20.4%	11	35.5%	462	22.9%
<b>Total</b>	<b>1,160</b>	<b>100.0%</b>	<b>830</b>	<b>100.0%</b>	<b>31</b>	<b>100.0%</b>	<b>2,021</b>	<b>100.0%</b>

- The highest amount of alcohol-related driver total crashes occurred on Saturday and Sunday.
- The highest amount of drunk driver fatal crashes occurred on Saturday.

### Alcohol-Related Driver Crashes by Hour (Utah 2015)

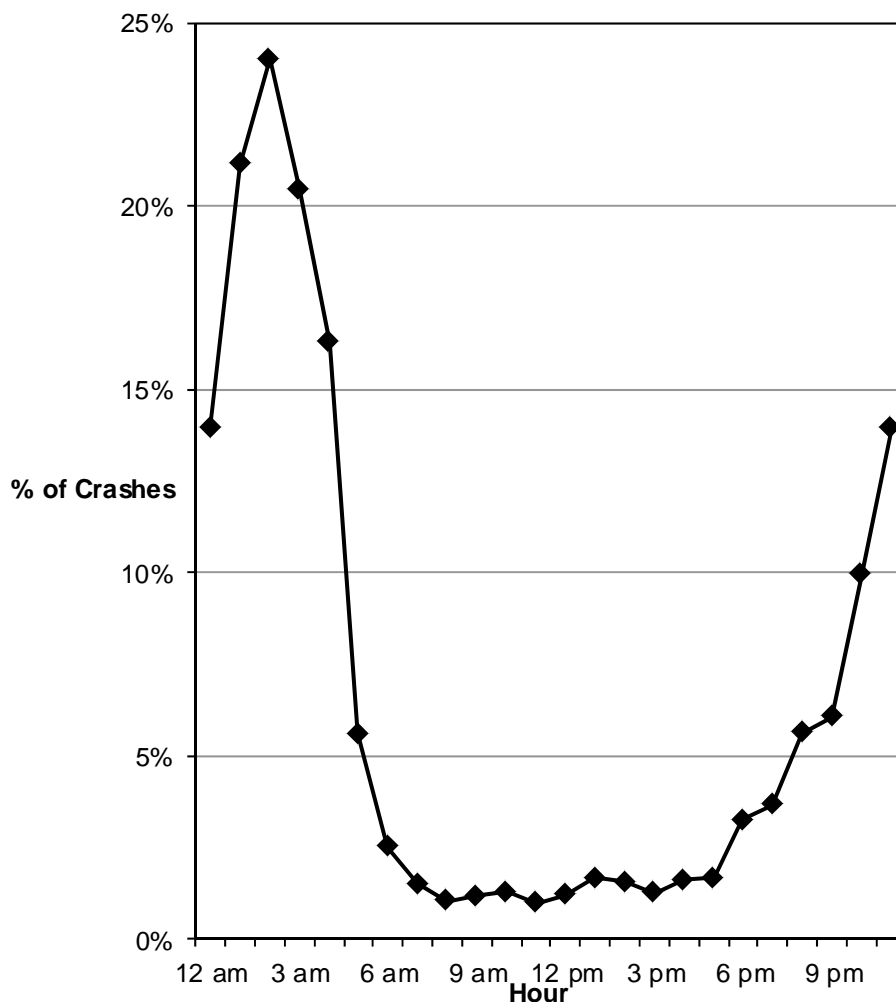
Alcohol-Related Driver Crashes								
Hour	PDO Crashes		Injury Crashes		Fatal Crashes		Total	
	#	%	#	%	#	%	#	%
Midnight	71	6.1%	49	5.9%	2	6.5%	122	6.0%
1 a.m.	79	6.8%	53	6.4%	1	3.2%	133	6.6%
2 a.m.	80	6.9%	45	5.4%	3	9.7%	128	6.3%
3 a.m.	47	4.1%	37	4.5%	2	6.5%	86	4.3%
4 a.m.	39	3.4%	29	3.5%	1	3.2%	69	3.4%
5 a.m.	26	2.2%	16	1.9%	3	9.7%	45	2.2%
6 a.m.	21	1.8%	15	1.8%	1	3.2%	37	1.8%
7 a.m.	27	2.3%	15	1.8%	1	3.2%	43	2.1%
8 a.m.	21	1.8%	13	1.6%	0	0.0%	34	1.7%
9 a.m.	18	1.6%	11	1.3%	1	3.2%	30	1.5%
10 a.m.	19	1.6%	12	1.4%	0	0.0%	31	1.5%
11 a.m.	14	1.2%	13	1.6%	0	0.0%	27	1.3%
Noon	23	2.0%	18	2.2%	0	0.0%	41	2.0%
1 p.m.	37	3.2%	20	2.4%	0	0.0%	57	2.8%
2 p.m.	37	3.2%	24	2.9%	0	0.0%	61	3.0%
3 p.m.	33	2.8%	22	2.7%	0	0.0%	55	2.7%
4 p.m.	50	4.3%	26	3.1%	3	9.7%	79	3.9%
5 p.m.	55	4.7%	42	5.1%	3	9.7%	100	4.9%
6 p.m.	73	6.3%	72	8.7%	3	9.7%	148	7.3%
7 p.m.	56	4.8%	55	6.6%	0	0.0%	111	5.5%
8 p.m.	71	6.1%	58	7.0%	0	0.0%	129	6.4%
9 p.m.	78	6.7%	49	5.9%	1	3.2%	128	6.3%
10 p.m.	101	8.7%	54	6.5%	2	6.5%	157	7.8%
11 p.m.	84	7.2%	82	9.9%	4	12.9%	170	8.4%
<b>Total</b>	<b>1,160</b>	<b>100.0%</b>	<b>830</b>	<b>100.0%</b>	<b>31</b>	<b>100.0%</b>	<b>2,021</b>	<b>100.0%</b>

- Alcohol-related driver total crashes peaked in the evening and early morning hours (6:00 p.m. to 2:59 a.m.).
- Fatal drunk driver crashes were highest during the 11 p.m. hour.

## Crash Conditions

### Percent of Total Crashes with an Alcohol-Related Driver by Hour (Utah 2015)

Alcohol-Related Driver Crashes			
Hour	Total Crashes		
	All #	Alcohol #	%
Midnight	875	122	13.9%
1 a.m.	629	133	21.1%
2 a.m.	533	128	24.0%
3 a.m.	421	86	20.4%
4 a.m.	424	69	16.3%
5 a.m.	804	45	5.6%
6 a.m.	1,481	37	2.5%
7 a.m.	2,904	43	1.5%
8 a.m.	3,268	34	1.0%
9 a.m.	2,573	30	1.2%
10 a.m.	2,422	31	1.3%
11 a.m.	2,749	27	1.0%
Noon	3,433	41	1.2%
1 p.m.	3,431	57	1.7%
2 p.m.	3,930	61	1.6%
3 p.m.	4,436	55	1.2%
4 p.m.	4,902	79	1.6%
5 p.m.	5,987	100	1.7%
6 p.m.	4,563	148	3.2%
7 p.m.	3,039	111	3.7%
8 p.m.	2,298	129	5.6%
9 p.m.	2,110	128	6.1%
10 p.m.	1,579	157	9.9%
11 p.m.	1,221	170	13.9%
<b>Total</b>	<b>60,012</b>	<b>2,021</b>	<b>3.4%</b>



- While 3.4% of total crashes were alcohol-related, 17.3% of the crashes occurring during the hours of 11:00 p.m.-4:59 a.m. were alcohol-related.

### Persons in Alcohol-Related Driver Crashes (Utah 2015)

Persons (Alcohol-Related Driver Crashes)								
Person Type	Non-Injured		Injured		Killed		Total	
	#	%	#	%	#	%	#	%
Driver	2,258	73.8%	872	72.1%	28	75.7%	3,158	73.4%
Passenger	800	26.2%	314	26.0%	7	18.9%	1,121	26.0%
Pedestrian	1	0.0%	19	1.6%	1	2.7%	21	0.5%
Bicyclist	0	0.0%	4	0.3%	1	2.7%	5	0.1%
<b>Total</b>	<b>3,059</b>	<b>100.0%</b>	<b>1,209</b>	<b>100.0%</b>	<b>37</b>	<b>100.0%</b>	<b>4,305</b>	<b>100.0%</b>

- Of the 4,305 people in alcohol-related driver crashes, 73.4% were drivers, 26.0% were passengers, and 0.6% were non-motorists.

## Crash Conditions

### Alcohol-Related Crashes by Day of Week and Hour (Utah 2015)

Alcohol-Related Driver Crashes								
Hour	Day of Week							Total #
	Sun	Mon	Tue	Wed	Thu	Fri	Sat	
Midnight	34	9	9	9	14	15	32	122
1 a.m.	44	12	11	4	14	13	34	132
2 a.m.	48	4	8	6	13	5	45	129
3 a.m.	34	9	2	8	3	7	23	86
4 a.m.	22	1	6	3	9	10	17	68
5 a.m.	13	6	1	3	6	3	12	44
6 a.m.	7	6	2	4	3	3	13	38
7 a.m.	10	7	4	6	4	6	8	45
8 a.m.	9	2	4	3	1	7	8	34
9 a.m.	8	2	4	4	5	4	2	29
10 a.m.	7	1	5	0	2	4	13	32
11 a.m.	5	3	1	4	1	6	7	27
Noon	8	2	4	8	7	2	10	41
1 p.m.	12	5	11	7	7	8	7	57
2 p.m.	14	6	11	6	2	11	11	61
3 p.m.	5	1	3	10	11	14	11	55
4 p.m.	11	7	12	14	13	8	14	79
5 p.m.	13	7	18	10	6	23	21	98
6 p.m.	26	24	11	25	15	27	19	147
7 p.m.	21	13	9	12	17	21	18	111
8 p.m.	17	14	7	17	18	27	30	130
9 p.m.	18	13	20	14	16	23	24	128
10 p.m.	13	13	18	13	25	35	41	158
11 p.m.	23	16	13	24	16	38	40	170
<b>Total</b>	<b>422</b>	<b>183</b>	<b>194</b>	<b>214</b>	<b>228</b>	<b>320</b>	<b>460</b>	<b>2,021</b>

High = 17+
Medium = 9-16
Low = 0-8

- Alcohol-related crashes were highest from Friday 5:00 p.m. to Saturday 4:59 a.m., Saturday 5:00 p.m. to Sunday 4:59 a.m., and Sunday 6:00 p.m. to 11:59 p.m. This is in contrast to when most crashes occur Monday through Saturday 12:00 p.m. to 6:59 p.m.

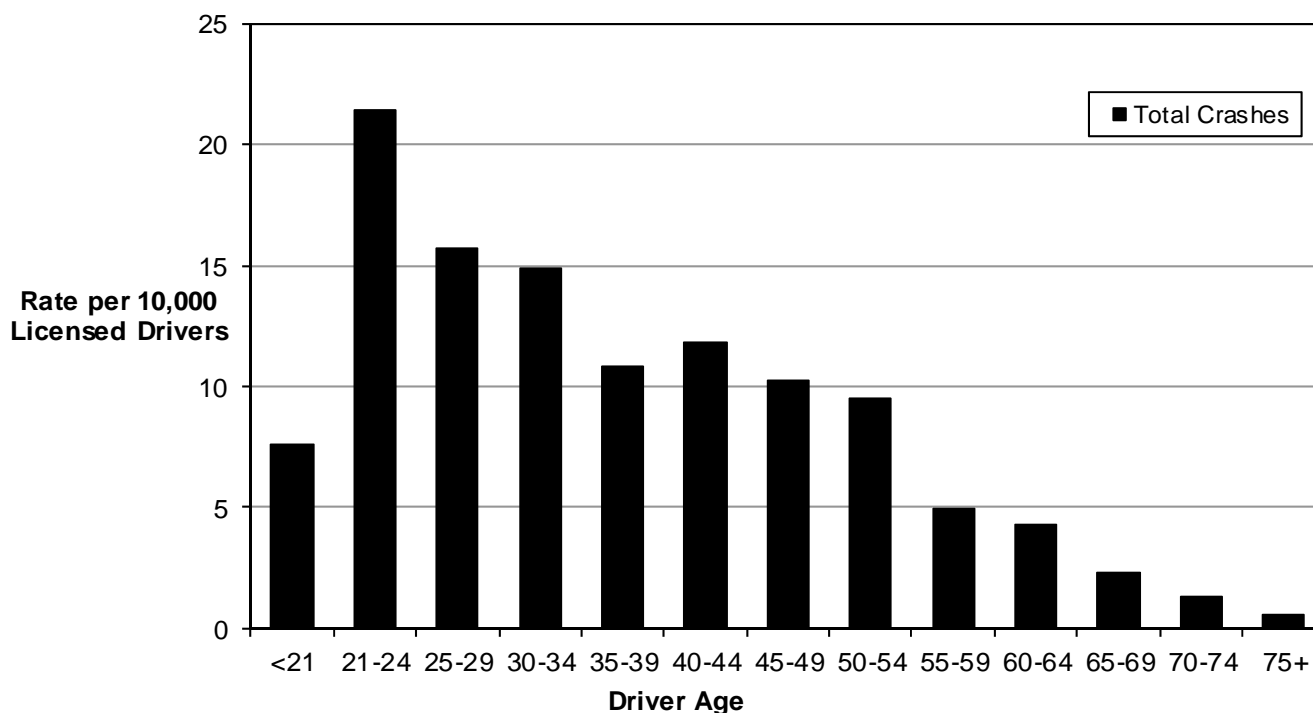
### Previous Driving Under the Influence Convictions of Drunk Drivers in Fatal Crashes (Utah 2015)

- Of the 31 drunk drivers in fatal crashes, five drivers (16.1%) had been previously convicted of driving under the influence in the past five years.

## Crash Conditions

### Age of Alcohol-Related Drivers in Crashes (Utah 2015)

Age	Alcohol-Related Drivers											
	PDO Crashes			Injury Crashes			Fatal Crashes			Total		
	#	%	Rate per 10,000 Drivers	#	%	Rate per 10,000 Drivers	#	%	Rate per 10,000 Drivers	#	%	Rate per 10,000 Drivers
<21	96	8.2%	4.6	59	7.0%	2.8	3	9.7%	0.14	158	7.7%	7.6
21-24	200	17.1%	12.4	142	16.9%	8.8	5	16.1%	0.31	347	17.0%	21.5
25-29	164	14.0%	8.1	150	17.8%	7.4	4	12.9%	0.20	318	15.6%	15.7
30-34	178	15.2%	8.8	117	13.9%	5.8	6	19.4%	0.30	301	14.7%	14.9
35-39	125	10.7%	6.2	90	10.7%	4.5	4	12.9%	0.20	219	10.7%	10.8
40-44	110	9.4%	6.6	84	10.0%	5.1	2	6.5%	0.12	196	9.6%	11.8
45-49	87	7.4%	6.0	60	7.1%	4.1	1	3.2%	0.07	148	7.2%	10.2
50-54	70	6.0%	5.0	58	6.9%	4.1	5	16.1%	0.36	133	6.5%	9.5
55-59	44	3.8%	3.1	25	3.0%	1.8	1	3.2%	0.07	70	3.4%	5.0
60-64	29	2.5%	2.3	25	3.0%	2.0	0	0.0%	0.00	54	2.6%	4.3
65-69	12	1.0%	1.2	11	1.3%	1.1	0	0.0%	0.00	23	1.1%	2.3
70-74	6	0.5%	0.8	3	0.4%	0.4	0	0.0%	0.00	9	0.4%	1.3
75+	4	0.3%	0.4	2	0.2%	0.2	0	0.0%	0.00	6	0.3%	0.6
Unknown	46	3.9%	n/a	15	1.8%	n/a	0	0.0%	n/a	61	3.0%	n/a
<b>Total</b>	<b>1,171</b>	<b>100.0%</b>	<b>5.9</b>	<b>841</b>	<b>100.0%</b>	<b>4.3</b>	<b>31</b>	<b>100.0%</b>	<b>0.16</b>	<b>2,043</b>	<b>100.0%</b>	<b>10.4</b>



- Drivers aged 21-29 years had the highest rate of total alcohol-related driver crashes.
- Drivers aged 50-54 (0.36) and 21-24 (0.31) years had the highest rate of drunk driver fatal crashes.
- 158 (7.7%) of the alcohol-related drivers in total crashes were under the age of 21 years.
- Three of the 31 (9.7%) drunk drivers in fatal crashes were under the age of 21 years.
- There is a rapid decline of alcohol-related drivers as age increases with less than 10% of alcohol-related drivers over the age of 55 years (8.2%).

## Crash Conditions

### Gender of Alcohol-Related Drivers in Crashes (Utah 2015)

Alcohol-Related Drivers								
Gender	PDO Crashes		Injury Crashes		Fatal Crashes		Total	
	#	%	#	%	#	%	#	%
Male	828	70.7%	591	70.3%	20	64.5%	1,439	70.4%
Female	305	26.0%	243	28.9%	11	35.5%	559	27.4%
Unknown	38	3.2%	7	0.8%	0	0.0%	45	2.2%
<b>Total</b>	<b>1,171</b>	<b>100.0%</b>	<b>841</b>	<b>100.0%</b>	<b>31</b>	<b>100.0%</b>	<b>2,043</b>	<b>100.0%</b>

- Male drivers were much more likely to be an alcohol-related driver in a crash. Male drivers represented 70.4% of the alcohol-related drivers in total crashes and 64.5% of drunk drivers in fatal crashes.

### Alcohol-Related Crashes by Vehicle Type (Utah 2015)

Alcohol-Related Vehicles												
Vehicle Type	Property Damage Only			Injury			Fatal			Total		
	All	Alcohol		All	Alcohol		All	Alcohol		All	Alcohol	
	#	#	%	#	#	%	#	#	%	#	#	%
Off Road Vehicle	32	2	6.3%	158	19	12.0%	4	1	25.0%	194	22	11.3%
Motorcycle	170	3	1.8%	935	39	4.2%	36	5	13.9%	1,141	47	4.1%
Pickup Truck	12,492	238	1.9%	4,632	160	3.5%	98	6	6.1%	17,222	404	2.3%
Passenger Car	39,421	634	1.6%	17,700	407	2.3%	152	11	7.2%	57,273	1,052	1.8%
SUV	15,933	228	1.4%	7,281	185	2.5%	73	8	11.0%	23,287	421	1.8%
Van	3,924	47	1.2%	1,951	25	1.3%	23	0	0.0%	5,898	72	1.2%
Heavy Truck	2,843	12	0.4%	765	5	0.7%	38	0	0.0%	3,646	17	0.5%
Bus/RV/Motorhome	439	0	0.0%	104	1	1.0%	3	0	0.0%	546	1	0.2%
Other	58	2	3.4%	25	0	0.0%	2	0	0.0%	85	2	2.4%
Unknown	1,630	5	0.3%	206	0	0.0%	3	0	0.0%	1,839	5	0.3%
<b>Total</b>	<b>76,942</b>	<b>1,171</b>	<b>1.5%</b>	<b>33,757</b>	<b>841</b>	<b>2.5%</b>	<b>432</b>	<b>31</b>	<b>7.2%</b>	<b>111,131</b>	<b>2,043</b>	<b>1.8%</b>

- Off Road Vehicle (11.3%), motorcycle (4.1%), and pickup truck (2.3%) had the highest percent of vehicles in a crash that were driven by an alcohol-related driver.

### Drivers in Fatal Crashes by Blood Alcohol Concentration (BAC) (Utah 2015)

All Drivers in Fatal Crashes			
BAC	Drivers		
	#	%	% of Tested
.00	221	52.7%	85.3%
.01 - .07	7	1.7%	2.7%
.08 - .15	8	1.9%	3.1%
.16 - .23	13	3.1%	5.0%
.24 - .31	7	1.7%	2.7%
.32+	3	0.7%	1.2%
Not Tested/Unknown	160	38.2%	n/a
<b>Total</b>	<b>419</b>	<b>100.0%</b>	

Drunk Drivers in Fatal Crashes		
BAC	Drivers	
	#	%
.08 - .15	8	25.8%
.16 - .23	13	41.9%
.24 - .31	7	22.6%
.32+	3	9.7%
<b>Total</b>	<b>31</b>	<b>100.0%</b>

- Of the 259 drivers in fatal crashes who were tested for alcohol, 221 (85.3%) had a BAC of 0.00, 7 (2.7%) had a BAC of 0.01-0.07, and 31 (12.0%) were over the legal limit of 0.08. 23 out of the 31 (74.2%) drivers in fatal crashes who tested over the legal limit for alcohol had BAC levels at or above twice the legal limit of 0.08.