

Older (Age 65+) Drivers



2

0

Section 7: Older (Age 65+) Drivers

Trends

Older Driver Crashes 2003-2012..... 90

Crash Conditions

Older Driver Crashes by County..... 91

Driver Gender..... 92

Driver Age..... 92

Crash Rate of Licensed Drivers by Age..... 93

Crash Severity..... 93

Month..... 94

Day of Week..... 94

Hour..... 95

Contributing Factors..... 96

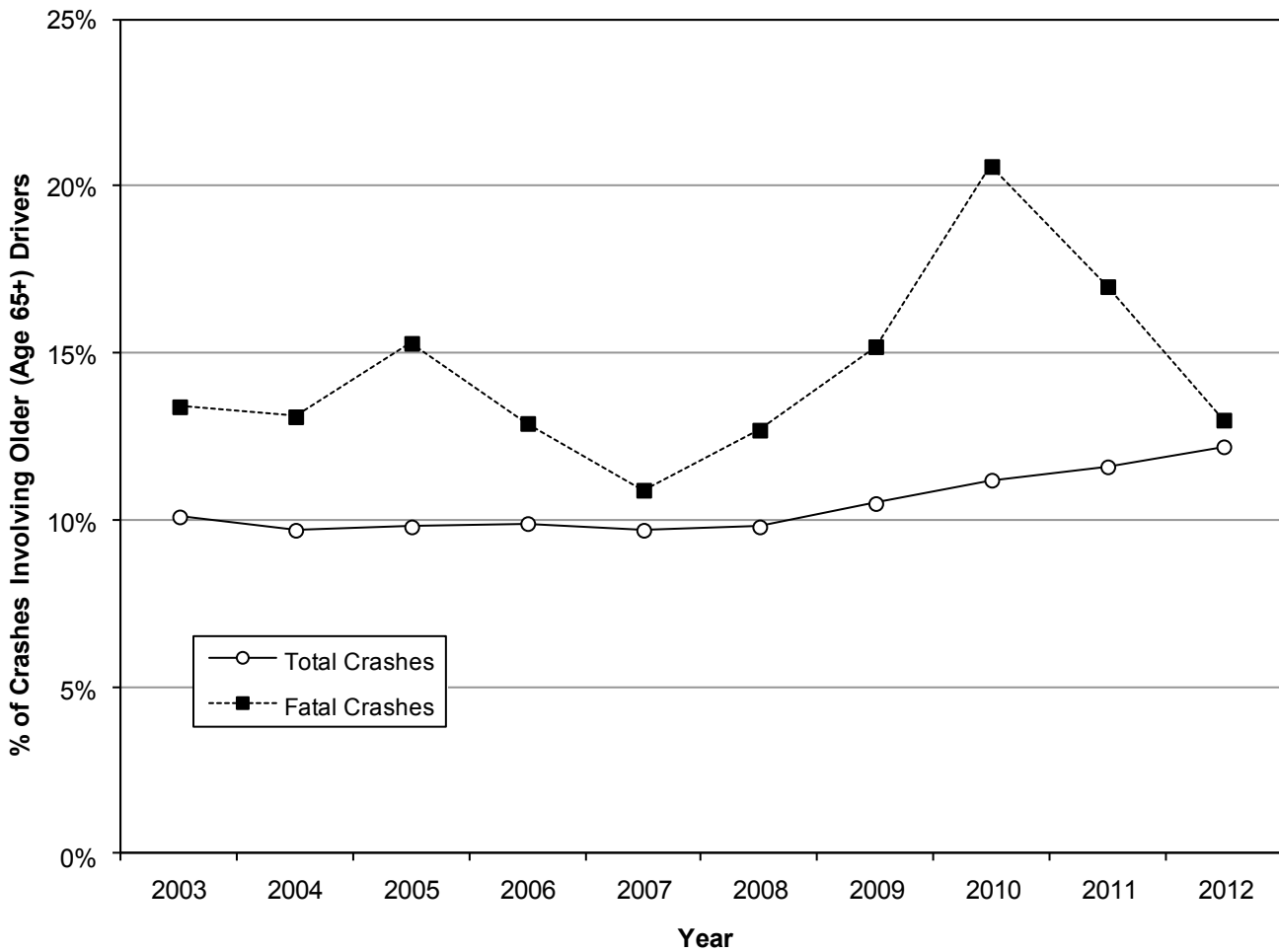
1

2

Trends

Older Driver Crashes (Utah 2003-2012)

Older (Age 65+) Driver Crashes												
Year	Property Damage Only			Injury			Fatal			Total		
	All #	Older Driver #	%	All #	Older Driver #	%	All #	Older Driver #	%	All #	Older Driver #	%
2003	31,842	3,073	9.7%	18,285	1,982	10.8%	262	35	13.4%	50,389	5,090	10.1%
2004	34,222	3,170	9.3%	19,423	2,011	10.4%	260	34	13.1%	53,905	5,215	9.7%
2005	35,158	3,344	9.5%	19,545	2,024	10.4%	235	36	15.3%	54,938	5,404	9.8%
2006	37,674	3,508	9.3%	18,264	2,010	11.0%	249	32	12.9%	56,187	5,550	9.9%
2007	42,368	3,937	9.3%	18,619	1,991	10.7%	258	28	10.9%	61,245	5,956	9.7%
2008	38,997	3,620	9.3%	17,125	1,872	10.9%	245	31	12.7%	56,367	5,523	9.8%
2009	35,398	3,552	10.0%	15,752	1,834	11.6%	217	33	15.2%	51,367	5,419	10.5%
2010	34,155	3,658	10.7%	14,995	1,830	12.2%	218	45	20.6%	49,368	5,533	11.2%
2011	36,418	4,108	11.3%	15,645	1,914	12.2%	224	38	17.0%	52,287	6,060	11.6%
2012	34,635	4,043	11.7%	15,765	2,080	13.2%	200	26	13.0%	50,600	6,149	12.2%
Total	360,867	36,013	10.0%	173,418	19,548	11.3%	2,368	338	14.3%	536,653	55,899	10.4%



- Older drivers (aged 65+ years) are a special concern because of their declining health and fragility.
- The 10-year trend shows that 10.4% of all crashes in Utah involved an older driver with an increasing trend over the last 5 years.
- Fatal older driver crashes have fluctuated around the 10-year average of 14.3% of fatal crashes.

Crash Conditions

Older Driver Crashes by County (Utah 2012)

Older (Age 65+) Driver Crashes												
County	PDO Crashes			Injury Crashes			Fatal Crashes			Total		
	All	Older Driver		All	Older Driver		All	Older Driver		All	Older Driver	
	#	#	%	#	#	%	#	#	%	#	#	%
Washington	1,179	255	21.6%	747	143	19.1%	10	1	10.0%	1,936	399	20.6%
Grand	158	30	19.0%	81	11	13.6%	2	0	0.0%	241	41	17.0%
Rich	49	8	16.3%	29	5	17.2%	1	0	0.0%	79	13	16.5%
Garfield	124	20	16.1%	34	5	14.7%	3	0	0.0%	161	25	15.5%
Kane	160	25	15.6%	32	4	12.5%	4	0	0.0%	196	29	14.8%
Iron	547	75	13.7%	244	41	16.8%	0	0	n/a	791	116	14.7%
Sevier	274	36	13.1%	110	19	17.3%	2	1	50.0%	386	56	14.5%
Weber	2,545	341	13.4%	1,352	221	16.3%	13	5	38.5%	3,910	567	14.5%
Morgan	107	16	15.0%	39	5	12.8%	1	0	0.0%	147	21	14.3%
San Juan	207	28	13.5%	52	8	15.4%	7	1	14.3%	266	37	13.9%
Davis	2,899	385	13.3%	1,338	204	15.2%	14	0	0.0%	4,251	589	13.9%
Emery	174	22	12.6%	70	12	17.1%	2	0	0.0%	246	34	13.8%
Box Elder	713	84	11.8%	289	47	16.3%	4	1	25.0%	1,006	132	13.1%
Wayne	36	6	16.7%	17	1	5.9%	1	0	0.0%	54	7	13.0%
Sanpete	223	24	10.8%	78	15	19.2%	1	0	0.0%	302	39	12.9%
Cache	1,237	145	11.7%	445	61	13.7%	6	3	50.0%	1,688	209	12.4%
Millard	262	27	10.3%	101	17	16.8%	9	2	22.2%	372	46	12.4%
Beaver	199	22	11.1%	55	9	16.4%	1	0	0.0%	255	31	12.2%
Carbon	317	41	12.9%	88	8	9.1%	1	0	0.0%	406	49	12.1%
Daggett	24	1	4.2%	8	3	37.5%	2	0	0.0%	34	4	11.8%
Utah	5,070	567	11.2%	2,700	334	12.4%	19	5	26.3%	7,789	906	11.6%
Juab	204	20	9.8%	69	11	15.9%	1	0	0.0%	274	31	11.3%
Tooele	686	76	11.1%	270	29	10.7%	16	2	12.5%	972	107	11.0%
Salt Lake	15,081	1,569	10.4%	6,815	802	11.8%	57	4	7.0%	21,953	2,375	10.8%
Wasatch	414	44	10.6%	174	18	10.3%	4	0	0.0%	592	62	10.5%
Summit	855	91	10.6%	214	20	9.3%	7	0	0.0%	1,076	111	10.3%
Duchesne	402	39	9.7%	115	9	7.8%	3	1	33.3%	520	49	9.4%
Uintah	471	45	9.6%	193	17	8.8%	9	0	0.0%	673	62	9.2%
Piute	18	1	5.6%	6	1	16.7%	0	0	n/a	24	2	8.3%
Statewide	34,635	4,043	11.7%	15,765	2,080	13.2%	200	26	13.0%	50,600	6,149	12.2%

- Overall, Washington (20.6%), Grand (17.0%), and Rich (16.5%) counties had the highest percentages of crashes involving an older driver.
- Sevier (50.0%), Cache (50.0%), and Weber (38.5%) counties had the highest percentages of fatal crashes involving an older driver.
- Overall, Piute (8.3%), Uintah (9.2%), and Duchesne (9.4%) counties had the lowest percentages of crashes involving an older driver.
- Statewide, older driver crashes represented 12.2% of all crashes and 13.0% of all fatal crashes.

Crash Conditions

Gender of Older Drivers in Crashes (Utah 2012)

Older (Age 65+) Drivers								
Gender	PDO Crashes		Injury Crashes		Fatal Crashes		Total	
	#	%	#	%	#	%	#	%
Male	2,584	60.5%	1,306	59.2%	18	62.1%	3,908	60.0%
Female	1,673	39.2%	898	40.7%	11	37.9%	2,582	39.7%
Unknown	16	0.4%	3	0.1%	0	0.0%	19	0.3%
Total	4,273	100.0%	2,207	100.0%	29	100.0%	6,509	100.0%

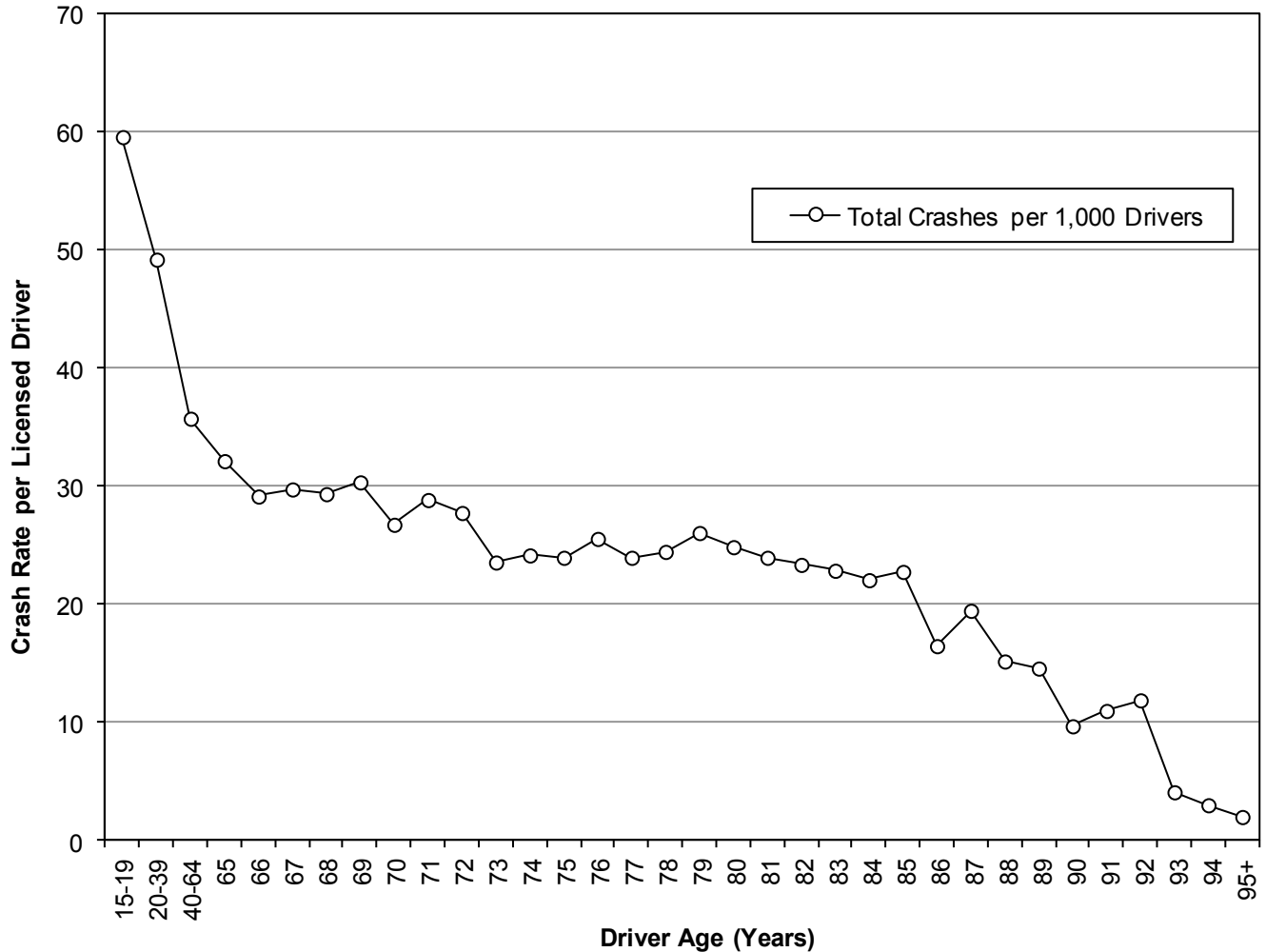
- The majority of older drivers in all motor vehicle crashes (60.0%) and fatal crashes (62.1%) were male.

Age of Older Drivers in Crashes (Utah 2012)

Older (Age 65+) Drivers													
Age	Licensed Drivers	PDO Crashes			Injury Crashes			Fatal Crashes			Total		
		#	%	Rate per 1,000 Drivers	#	%	Rate per 1,000 Drivers	#	%	Rate per 1,000 Drivers	#	%	Rate per 1,000 Drivers
65	19,687	412	9.6%	20.9	218	9.9%	11.1	1	3.4%	0.05	631	9.7%	32.1
66	16,036	317	7.4%	19.8	148	6.7%	9.2	1	3.4%	0.06	466	7.2%	29.1
67	16,255	305	7.1%	18.8	174	7.9%	10.7	3	10.3%	0.18	482	7.4%	29.7
68	16,904	329	7.7%	19.5	166	7.5%	9.8	0	0.0%	0.00	495	7.6%	29.3
69	15,656	299	7.0%	19.1	175	7.9%	11.2	1	3.4%	0.06	475	7.3%	30.3
70	13,801	242	5.7%	17.5	123	5.6%	8.9	4	13.8%	0.29	369	5.7%	26.7
71	12,792	245	5.7%	19.2	123	5.6%	9.6	1	3.4%	0.08	369	5.7%	28.8
72	11,753	222	5.2%	18.9	100	4.5%	8.5	3	10.3%	0.26	325	5.0%	27.7
73	11,500	173	4.0%	15.0	97	4.4%	8.4	0	0.0%	0.00	270	4.1%	23.5
74	10,720	170	4.0%	15.9	87	3.9%	8.1	1	3.4%	0.09	258	4.0%	24.1
75	10,020	159	3.7%	15.9	79	3.6%	7.9	1	3.4%	0.10	239	3.7%	23.9
76	9,705	177	4.1%	18.2	69	3.1%	7.1	1	3.4%	0.10	247	3.8%	25.5
77	9,266	153	3.6%	16.5	65	2.9%	7.0	3	10.3%	0.32	221	3.4%	23.9
78	8,202	143	3.3%	17.4	55	2.5%	6.7	2	6.9%	0.24	200	3.1%	24.4
79	7,836	134	3.1%	17.1	69	3.1%	8.8	1	3.4%	0.13	204	3.1%	26.0
80	7,708	115	2.7%	14.9	74	3.4%	9.6	2	6.9%	0.26	191	2.9%	24.8
81	7,320	122	2.9%	16.7	53	2.4%	7.2	0	0.0%	0.00	175	2.7%	23.9
82	6,576	102	2.4%	15.5	50	2.3%	7.6	1	3.4%	0.15	153	2.4%	23.3
83	6,220	95	2.2%	15.3	47	2.1%	7.6	0	0.0%	0.00	142	2.2%	22.8
84	5,642	72	1.7%	12.8	51	2.3%	9.0	1	3.4%	0.18	124	1.9%	22.0
85	5,108	79	1.8%	15.5	36	1.6%	7.0	1	3.4%	0.20	116	1.8%	22.7
86	4,747	45	1.1%	9.5	33	1.5%	7.0	0	0.0%	0.00	78	1.2%	16.4
87	4,120	51	1.2%	12.4	28	1.3%	6.8	1	3.4%	0.24	80	1.2%	19.4
88	3,697	30	0.7%	8.1	26	1.2%	7.0	0	0.0%	0.00	56	0.9%	15.1
89	3,237	21	0.5%	6.5	26	1.2%	8.0	0	0.0%	0.00	47	0.7%	14.5
90	2,906	13	0.3%	4.5	15	0.7%	5.2	0	0.0%	0.00	28	0.4%	9.6
91	2,389	18	0.4%	7.5	8	0.4%	3.3	0	0.0%	0.00	26	0.4%	10.9
92	1,943	15	0.4%	7.7	8	0.4%	4.1	0	0.0%	0.00	23	0.4%	11.8
93	1,733	4	0.1%	2.3	3	0.1%	1.7	0	0.0%	0.00	7	0.1%	4.0
94	1,390	3	0.1%	2.2	1	0.0%	0.7	0	0.0%	0.00	4	0.1%	2.9
95+	4,302	8	0.2%	1.9	0	0.0%	0.0	0	0.0%	0.00	8	0.1%	1.9
Total	259,171	4,273	100.0%	16.5	2,207	100.0%	8.5	29	100.0%	0.11	6,509	100.0%	25.1

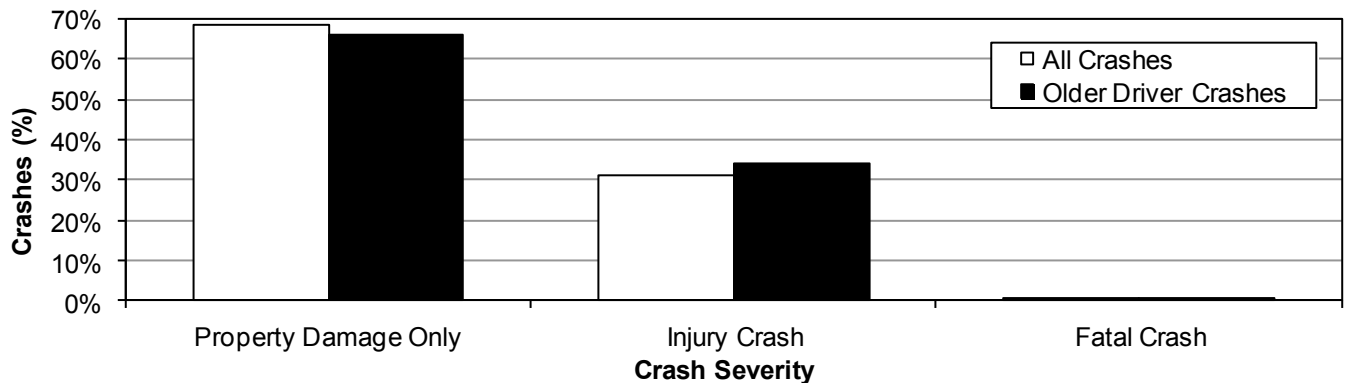
Crash Conditions

Crash Rate of Licensed Drivers by Age (Utah 2012)



- The older the driver the less likely they were to be in a crash per licensed driver.
- Older drivers had the lowest crash rate per licensed driver.

Older Driver Crash Severity (Utah 2012)



- Older driver crashes were 15% more likely to result in injury or death compared to all other crashes.

Crash Conditions

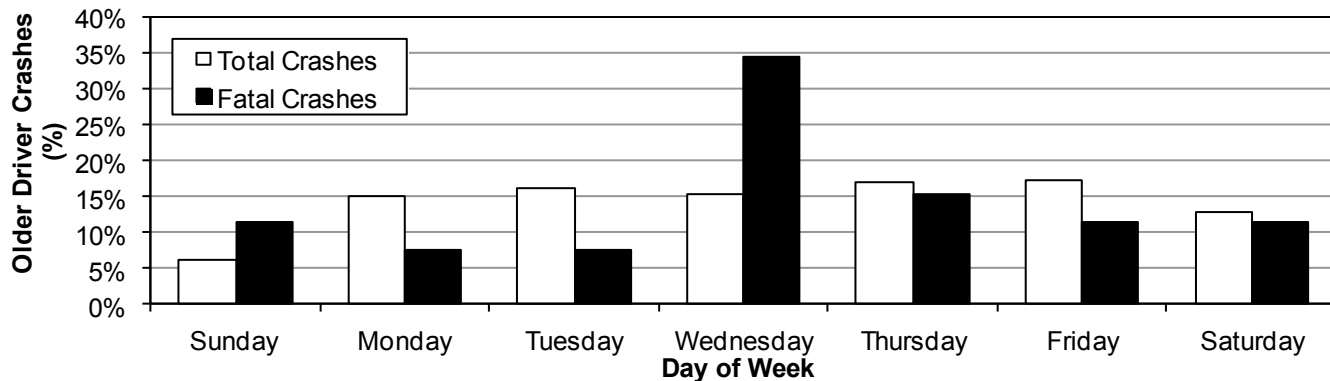
Older Driver Crashes by Month (Utah 2012)

Older (Age 65+) Driver Crashes								
Month	PDO Crashes		Injury Crashes		Fatal Crashes		Total	
	#	Rate per Day	#	Rate per Day	#	Rate per Day	#	Rate per Day
January	317	10.2	125	4.0	0	0.00	442	14.3
February	271	9.3	114	3.9	0	0.00	385	13.3
March	299	9.6	173	5.6	2	0.06	474	15.3
April	300	10.0	175	5.8	1	0.03	476	15.9
May	303	9.8	174	5.6	4	0.13	481	15.5
June	367	12.2	196	6.5	2	0.07	565	18.8
July	311	10.0	187	6.0	2	0.06	500	16.1
August	359	11.6	193	6.2	4	0.13	556	17.9
September	355	11.8	184	6.1	2	0.07	541	18.0
October	355	11.5	199	6.4	1	0.03	555	17.9
November	370	12.3	164	5.5	4	0.13	538	17.9
December	436	14.1	196	6.3	4	0.13	636	20.5
Total	4,043	11.0	2,080	5.7	26	0.07	6,149	16.8

- Overall, December (20.5) and June (18.8) had the highest rates per day for older driver crashes.
- The highest rate per day of fatal older driver crashes occurred in May, August, November, and December.

Older Driver Crashes by Day of Week (Utah 2012)

Older (Age 65+) Driver Crashes								
Day of Week	PDO Crashes		Injury Crashes		Fatal Crashes		Total	
	#	%	#	%	#	%	#	%
Sunday	236	5.8%	151	7.3%	3	11.5%	390	6.3%
Monday	634	15.7%	291	14.0%	2	7.7%	927	15.1%
Tuesday	653	16.2%	333	16.0%	2	7.7%	988	16.1%
Wednesday	618	15.3%	318	15.3%	9	34.6%	945	15.4%
Thursday	689	17.0%	348	16.7%	4	15.4%	1,041	16.9%
Friday	697	17.2%	366	17.6%	3	11.5%	1,066	17.3%
Saturday	516	12.8%	273	13.1%	3	11.5%	792	12.9%
Total	4,043	100.0%	2,080	100.0%	26	100.0%	6,149	100.0%

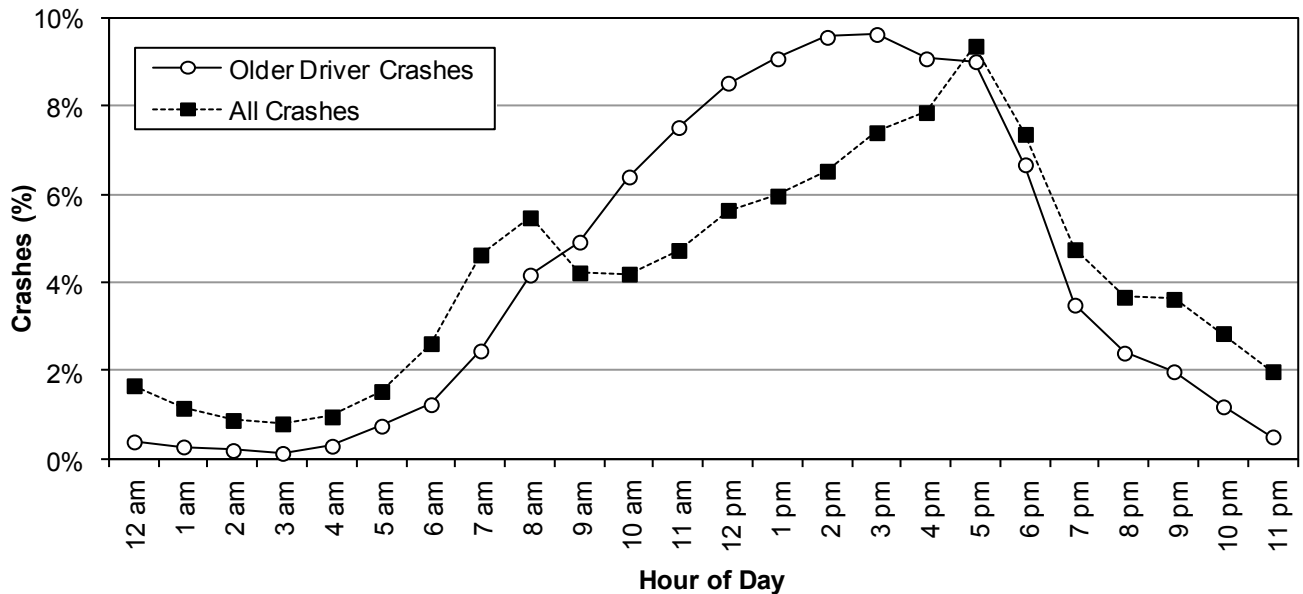


- Overall, the highest percentage of older driver crashes occurred on Friday (17.3%).
- The highest percentage of fatal older driver crashes occurred on Wednesday (34.6%).

Crash Conditions

Older Driver Crashes by Hour (Utah 2012)

Older (Age 65+) Driver Crashes								
Hour	PDO Crashes		Injury Crashes		Fatal Crashes		Total	
	#	%	#	%	#	%	#	%
Midnight	13	0.3%	11	0.5%	0	0.0%	24	0.4%
1 a.m.	12	0.3%	5	0.2%	0	0.0%	17	0.3%
2 a.m.	5	0.1%	7	0.3%	0	0.0%	12	0.2%
3 a.m.	5	0.1%	3	0.1%	0	0.0%	8	0.1%
4 a.m.	10	0.2%	8	0.4%	0	0.0%	18	0.3%
5 a.m.	34	0.8%	12	0.6%	0	0.0%	46	0.7%
6 a.m.	61	1.5%	15	0.7%	0	0.0%	76	1.2%
7 a.m.	96	2.4%	54	2.6%	1	3.8%	151	2.5%
8 a.m.	158	3.9%	99	4.8%	0	0.0%	257	4.2%
9 a.m.	197	4.9%	105	5.0%	1	3.8%	303	4.9%
10 a.m.	246	6.1%	145	7.0%	3	11.5%	394	6.4%
11 a.m.	305	7.5%	157	7.5%	1	3.8%	463	7.5%
Noon	353	8.7%	171	8.2%	1	3.8%	525	8.5%
1 p.m.	347	8.6%	209	10.0%	3	11.5%	559	9.1%
2 p.m.	398	9.8%	187	9.0%	4	15.4%	589	9.6%
3 p.m.	395	9.8%	197	9.5%	1	3.8%	593	9.6%
4 p.m.	357	8.8%	198	9.5%	4	15.4%	559	9.1%
5 p.m.	375	9.3%	177	8.5%	3	11.5%	555	9.0%
6 p.m.	279	6.9%	131	6.3%	1	3.8%	411	6.7%
7 p.m.	147	3.6%	67	3.2%	1	3.8%	215	3.5%
8 p.m.	90	2.2%	56	2.7%	2	7.7%	148	2.4%
9 p.m.	84	2.1%	38	1.8%	0	0.0%	122	2.0%
10 p.m.	53	1.3%	20	1.0%	0	0.0%	73	1.2%
11 p.m.	23	0.6%	8	0.4%	0	0.0%	31	0.5%
Total	4,043	100.0%	2,080	100.0%	26	100.0%	6,149	100.0%



- Older driver total crashes were highest from 12:00 p.m. to 5:59 p.m.
- Compared to all crashes, older driver crashes occurred more often in the afternoon and less often at night.

Crash Conditions

Contributing Factors of Older Driver Crashes (Utah 2012)

Older (Age 65+) Drivers/Vehicles								
Contributing Factors	PDO Crashes		Injury Crashes		Fatal Crashes		Total	
	#	%	#	%	#	%	#	%
Failed to Yield Right of Way	693	20.4%	432	21.8%	3	6.4%	1,128	20.8%
Followed Too Closely	389	11.5%	259	13.1%	0	0.0%	648	12.0%
Failed to Keep in Proper Lane	268	7.9%	124	6.3%	9	19.1%	401	7.4%
Speed Too Fast	144	4.2%	202	10.2%	7	14.9%	353	6.5%
Other Improper Driving	224	6.6%	119	6.0%	1	2.1%	344	6.4%
Disregard Traffic Signal/Sign	157	4.6%	152	7.7%	5	10.6%	314	5.8%
Improper Turn	212	6.3%	96	4.9%	1	2.1%	309	5.7%
Driver Distraction	161	4.7%	85	4.3%	1	2.1%	247	4.6%
Improper Backing	198	5.8%	9	0.5%	1	2.1%	208	3.8%
Improper Lane Change	172	5.1%	32	1.6%	0	0.0%	204	3.8%
Vision Obscured by Weather Condition	89	2.6%	59	3.0%	1	2.1%	149	2.8%
Ran Off Road	67	2.0%	53	2.7%	5	10.6%	125	2.3%
Driver Asleep/Fatigue	50	1.5%	36	1.8%	5	10.6%	91	1.7%
Improper Parking/Stopping	67	2.0%	22	1.1%	0	0.0%	89	1.6%
Driver Illness/Medical	33	1.0%	39	2.0%	2	4.3%	74	1.4%
Vision Obscured by Glare	34	1.0%	36	1.8%	0	0.0%	70	1.3%
Other Driver Condition	41	1.2%	25	1.3%	1	2.1%	67	1.2%
Overcorrected	35	1.0%	29	1.5%	3	6.4%	67	1.2%
Swerved or Evasive Action	41	1.2%	25	1.3%	1	2.1%	67	1.2%
Hit and Run	56	1.7%	7	0.4%	0	0.0%	63	1.2%
Vision Obscured by Moving Vehicle	38	1.1%	20	1.0%	0	0.0%	58	1.1%
Vision Obscured by Other	29	0.9%	18	0.9%	0	0.0%	47	0.9%
Vehicle Other Defective Condition	29	0.9%	17	0.9%	0	0.0%	46	0.8%
Driving Under the Influence	19	0.6%	15	0.8%	0	0.0%	34	0.6%
Vision Obscured by Parked Vehicle	21	0.6%	9	0.5%	0	0.0%	30	0.6%
Vehicle Tires	19	0.6%	7	0.4%	0	0.0%	26	0.5%
Wrong Side/Wrong Way	11	0.3%	13	0.7%	0	0.0%	24	0.4%
Disregard Road Markings	16	0.5%	6	0.3%	0	0.0%	22	0.4%
Vehicle Brakes	16	0.5%	6	0.3%	0	0.0%	22	0.4%
Vehicle Cargo	16	0.5%	4	0.2%	0	0.0%	20	0.4%
Improper Passing	12	0.4%	7	0.4%	0	0.0%	19	0.4%
Vision Obscured by Vegetation	8	0.2%	3	0.2%	0	0.0%	11	0.2%
Driver Emotional Prior to Crash	6	0.2%	4	0.2%	0	0.0%	10	0.2%
Improper Signal	8	0.2%	2	0.1%	0	0.0%	10	0.2%
Vision Obscured by Building, Sign, etc.	6	0.2%	2	0.1%	0	0.0%	8	0.1%
Reckless/Aggressive Driving	3	0.1%	2	0.1%	1	2.1%	6	0.1%
Windshield or Other Window Obscured	3	0.1%	3	0.2%	0	0.0%	6	0.1%
Total	3,391	100.0%	1,979	100.0%	47	100.0%	5,417	100.0%

- Some form of poor driver performance is present in the majority of crashes. The leading contributing factors for all older driver crashes were failed to yield right of way (20.8%), followed too closely (12.0%), and failed to keep in proper lane (7.4%).
- The leading contributing factors in fatal older driver crashes were failed to keep in proper lane (19.1%), and speed too fast (14.9%).
- Compared to drivers of all ages, older drivers were more likely to have a contributing factor of failure to yield right of way, disregard traffic signal/sign, improper turn, improper backing, and improper lane change.

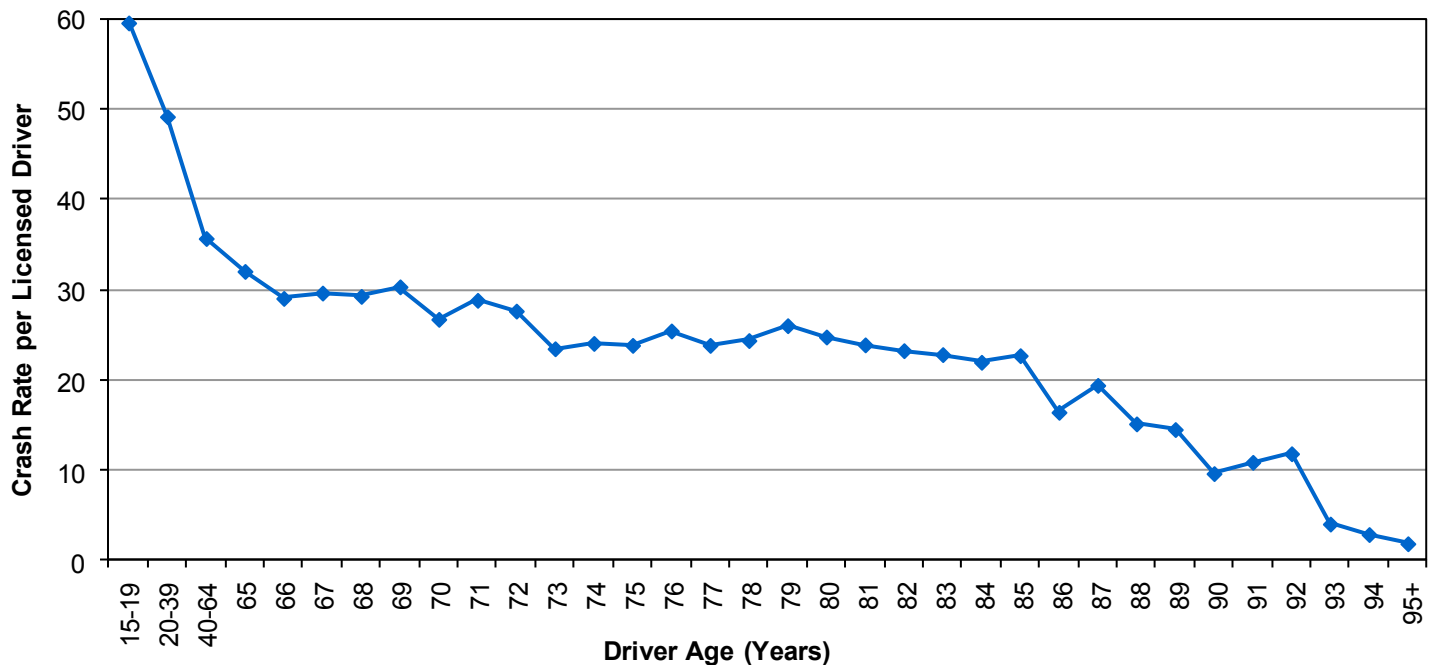
Did you know in 2012:

- Older drivers had the lowest crash rate per licensed driver.
- Older drivers were in 6,149 motor vehicle crashes which resulted in 3,079 injured persons and 27 deaths.
- Seniors represented 7% of people in a crash and 11% of the deaths.
- Although older drivers have the lowest crash rates of any drivers, older drivers are a concern due to declining health and fragility.

Older Drivers (Age 65+)



Crash Rates per Licensed Driver by Age (Utah 2012)



- The older the driver the less likely they were in a crash per licensed driver.

Leading Contributing Factors of Older Driver Crashes Compared to All Drivers (Utah 2012)

All Drivers in Crashes

1. Followed Too Closely (23%)
2. Failed to Yield Right of Way (18%)
3. Speed Too Fast (14%)
4. Failed to Keep in Proper Lane (13%)
5. Driver Distraction (10%)

Older Driver Crashes

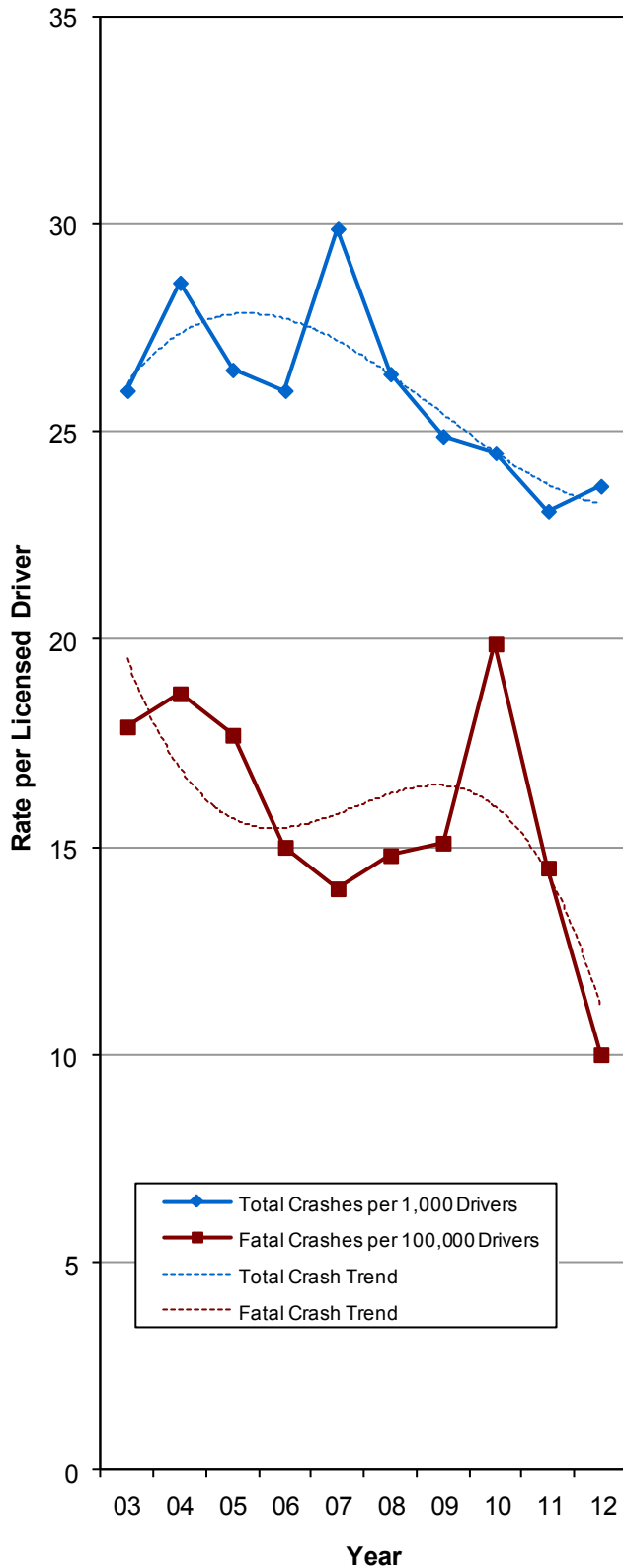
1. Failed to Yield Right of Way (18%)
2. Followed Too Closely (11%)
3. Failed to Keep in Proper Lane (7%)
4. Speed Too Fast (6%)
5. Disregard Traffic Signal/Sign (5%)

- Older drivers were less likely to have a contributing factor than other drivers in a crash.
- Compared to drivers of all ages, older drivers were more likely to have a contributing factor of failed to yield right of way, disregard traffic signal/sign, improper turn, and improper backing.

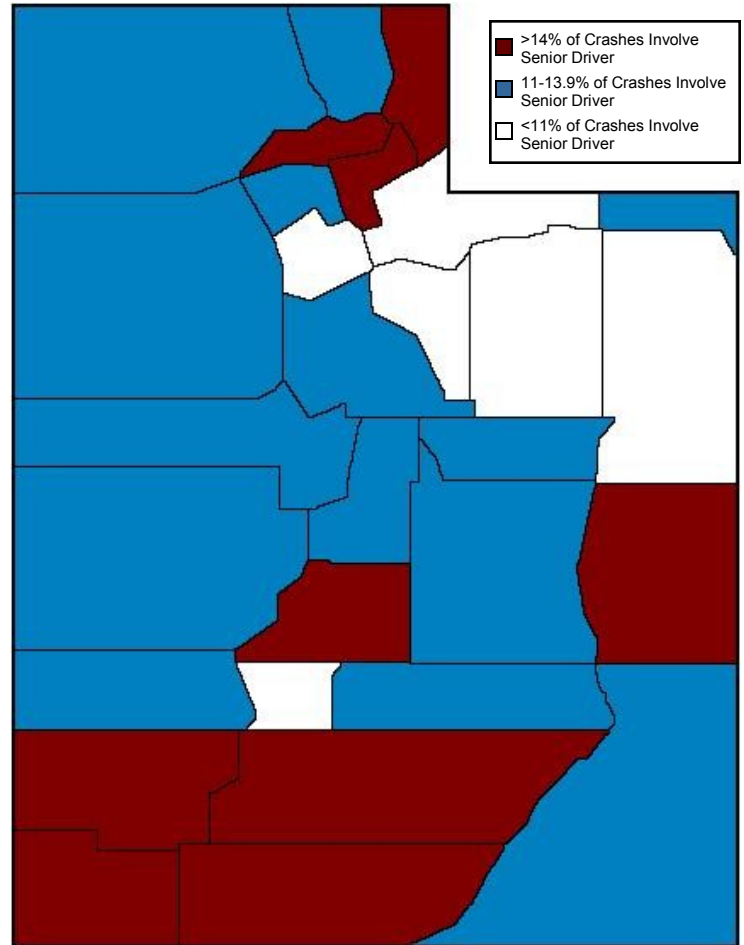
Older Drivers (Age 65+)



Older Driver Crash Trend (Utah 2003-2012)

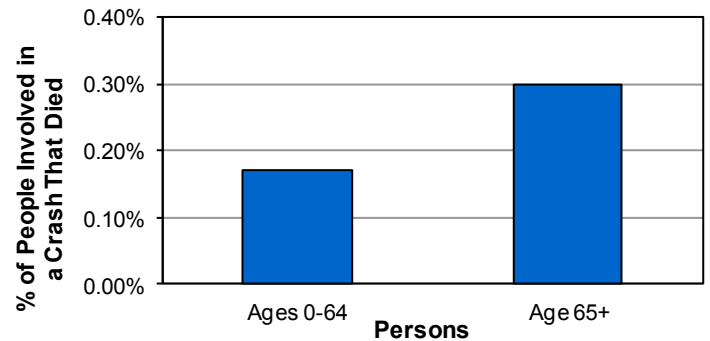


Older Driver Crashes by County (Utah 2012)



- Washington, Grand, Rich, and Garfield counties had the highest percent of crashes that involved an older driver.

Injury Severity by Age (Utah 2012)



- People age 65+ were 2.6 times more likely to be killed in a crash than younger people.

- The older driver crash rate per licensed driver increased in 2012 after four years of decreases.