

Trends



2



1

6

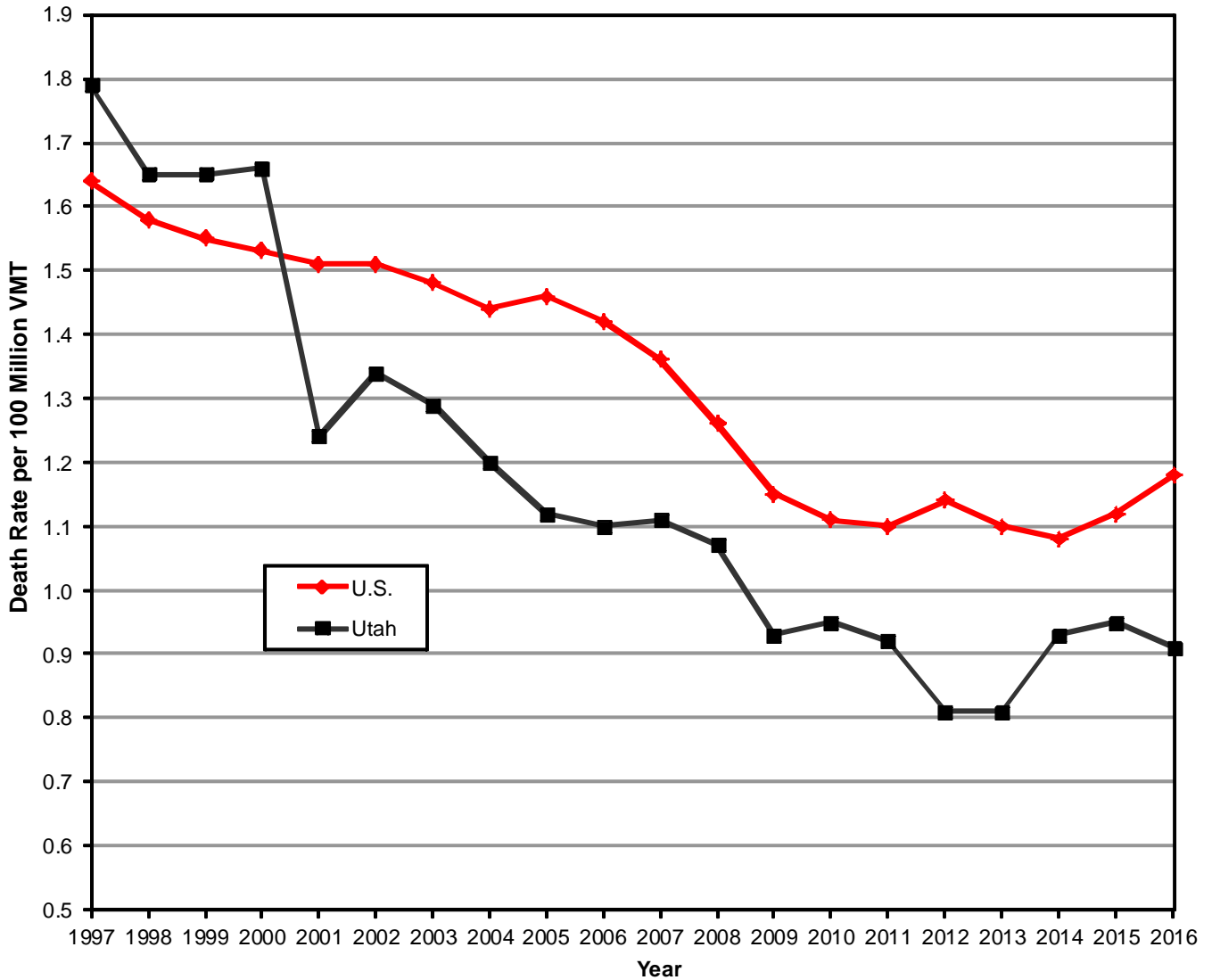
Trends

Utah vs. U.S. Death Rate per Miles Traveled.....	2
Crashes 2007-2016.....	3
Persons Involved 2007-2016.....	4
Serious Injuries 2007-2016	5
Deaths by Month 2007-2016	6
Deaths by Day of Week 2007-2016	7
Deaths by Hour 2007-2016	8
Deaths by Day of Week and Hour 2007-2016.....	9
Serious Injuries by Person Type 2007-2016	9
Deaths by Person Type 2007-2016.....	10
Deaths by Contributing Factors 2007-2016.....	10
Deaths by County 2007-2016.....	11
Crashes by County 2007-2016.....	12
Holiday Deaths 2007-2016.....	13
Animal Crashes by Rural/Urban 2007-2016.....	14

Deaths

Utah vs. U.S. Death Rate per 100 Million Vehicle Miles Traveled, 1997-2016

Death Rate per Miles Traveled																				
	Year																			
	1997	1998	1999	2000	2001	2002	2003	2004	2005	2006	2007	2008	2009	2010	2011	2012	2013	2014	2015	2016
U.S.	1.64	1.58	1.55	1.53	1.51	1.51	1.48	1.44	1.46	1.42	1.36	1.26	1.15	1.11	1.10	1.14	1.10	1.08	1.12	1.18
Utah	1.79	1.65	1.65	1.66	1.24	1.34	1.29	1.20	1.12	1.10	1.11	1.07	0.93	0.95	0.92	0.81	0.81	0.93	0.95	0.91



- In 2016, the Utah death rate per 100 million vehicle miles traveled was 0.91 which was lower than the U.S. rate of 1.18.
- The Utah death rate per 100 million vehicle miles traveled has been lower than the U.S. rate since 2001. This somewhat dispels the notion that drivers in Utah are worse than other drivers in the U.S.

U.S. SOURCE: National Highway Traffic Safety Administration

Crashes

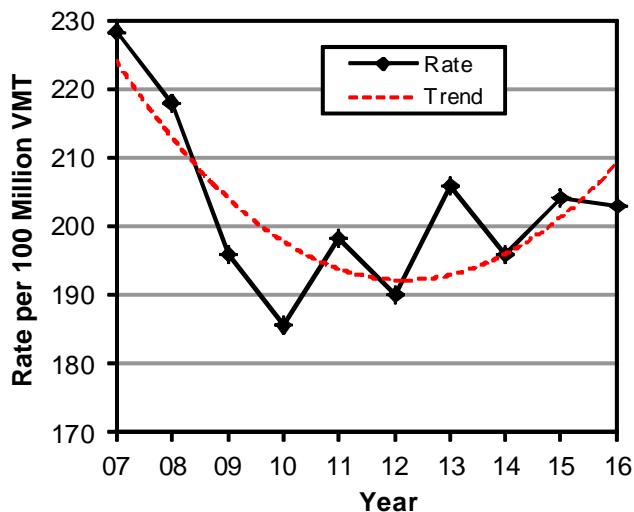
Crashes (Utah 2007-2016)

Crashes								
Year	Property Damage Only		Injury		Fatal		Total	
	#	Rate per 100 Million VMT	#	Rate per 100 Million VMT	#	Rate per 100 Million VMT	#	Rate per 100 Million VMT
2007	42,368	157.9	18,619	69.4	258	0.96	61,245	228.3
2008	38,997	150.7	17,125	66.2	245	0.95	56,367	217.8
2009	35,398	135.0	15,752	60.1	217	0.83	51,367	195.9
2010	34,155	128.3	14,995	56.3	218	0.82	49,368	185.5
2011	36,418	138.1	15,645	59.3	224	0.85	52,287	198.2
2012	34,635	130.0	15,765	59.2	200	0.75	50,600	190.0
2013	39,301	145.5	16,134	59.7	202	0.75	55,637	206.0
2014	37,388	135.6	16,426	59.6	222	0.81	54,036	196.0
2015	42,089	143.2	17,665	60.1	258	0.88	60,012	204.2
2016	43,465	141.2	18,747	60.9	259	0.84	62,471	203.0
Total	384,214	140.6	166,873	61.1	2,303	0.84	553,390	202.5

NOTE: A crash may result in multiple injuries and/or deaths. See next page for persons.

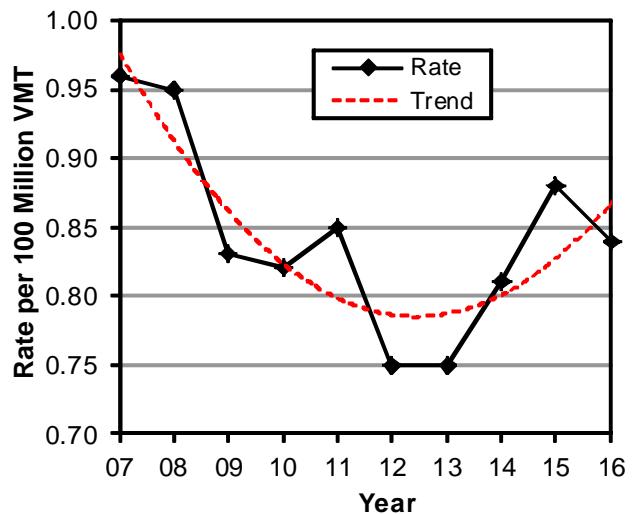
- During the last 10 years, 553,390 motor vehicle crashes occurred in Utah. On average, there are 55,300 crashes a year of which 16,700 involve injuries and 230 involve deaths.
- In 2016, total crashes increased 4.1% from 2015.
- The highest total crash rate per 100 million VMT in Utah occurred in 2007 while the lowest year was 2010.

Crash Rates Per 100 Million Vehicle Miles Traveled (Utah 2007-2016)



- The 2010 total crash rate was the lowest on record (see Appendix for records back to 1947).
- There was a 11.1% decrease in the total crash rate from 2007-2016.

Fatal Crash Rates Per 100 Million Vehicle Miles Traveled (Utah 2007-2016)



- The 2012 and 2013 fatal crash rates were the lowest on record.
- There was a 12.5% decrease in the fatal crash rate from 2007-2016.

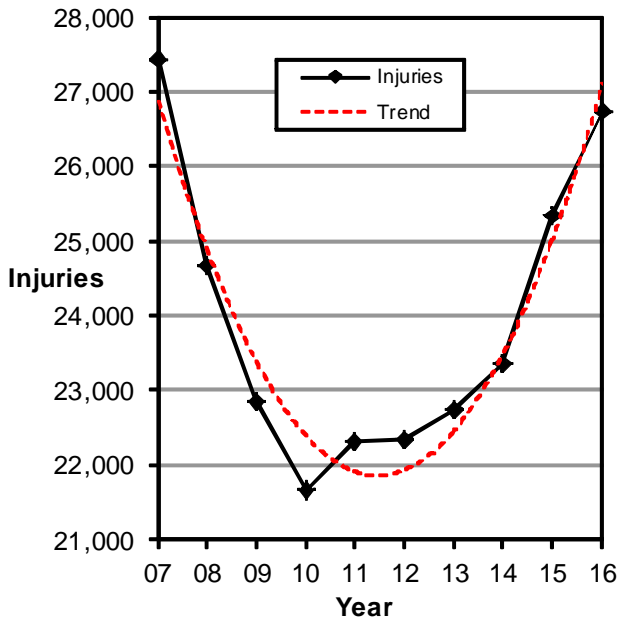
Persons

Persons Involved (Utah 2007-2016)

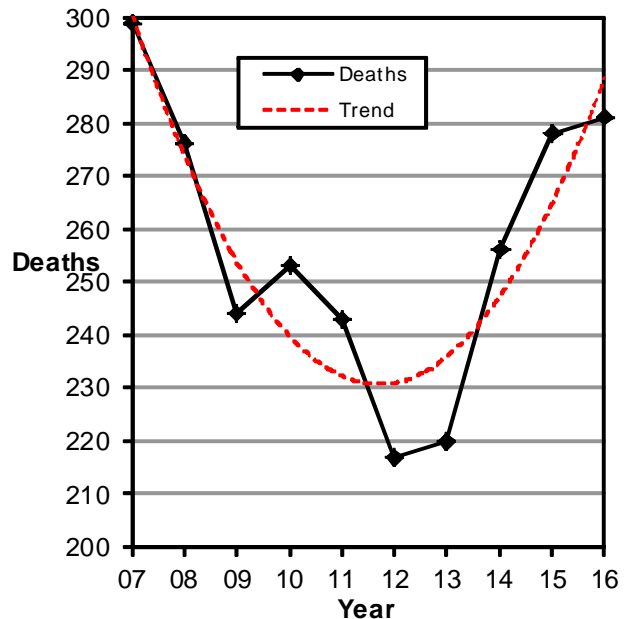
Persons								
Year	Non-Injured		Injured		Killed		Total	
	#	Rate per 100 Million VMT	#	Rate per 100 Million VMT	#	Rate per 100 Million VMT	#	Rate per 100 Million VMT
2007	127,330	474.7	27,420	102.2	299	1.11	155,049	578.0
2008	113,744	439.4	24,673	95.3	276	1.07	138,693	535.8
2009	103,956	396.5	22,847	87.1	244	0.93	127,047	484.6
2010	101,966	383.1	21,675	81.4	253	0.95	123,894	465.5
2011	106,526	403.8	22,325	84.6	243	0.92	129,094	489.4
2012	103,156	387.3	22,336	83.9	217	0.81	125,709	471.9
2013	112,004	414.6	22,740	84.2	220	0.81	134,964	499.6
2014	110,562	401.0	23,364	84.7	256	0.93	134,182	486.6
2015	125,609	427.3	25,350	86.2	278	0.95	151,237	514.5
2016	131,398	426.9	26,738	86.9	281	0.91	158,417	514.7
Total	1,136,251	415.7	239,468	87.6	2,567	0.94	1,378,286	504.3

- During the last 10 years, nearly 1.4 million people have been in a crash. On average over the past 10 years, approximately 24,000 people are injured and 257 people are killed in motor vehicle crashes a year.
- The injury rate per vehicle miles traveled decreased 15.0% from 2007-2016.
- The death rate per vehicle miles traveled in 2012 and 2013 was the lowest in Utah on record.
- Deaths have increased four straight years, with 64 more deaths in Utah in 2016 compared to 2012.

Injured Persons by Year (Utah 2007-2016)



Deaths by Year (Utah 2007-2016)



- The number of people injured in a crash increased for the 6th straight year.
- Deaths in 2016 were the highest total in Utah since 2007.

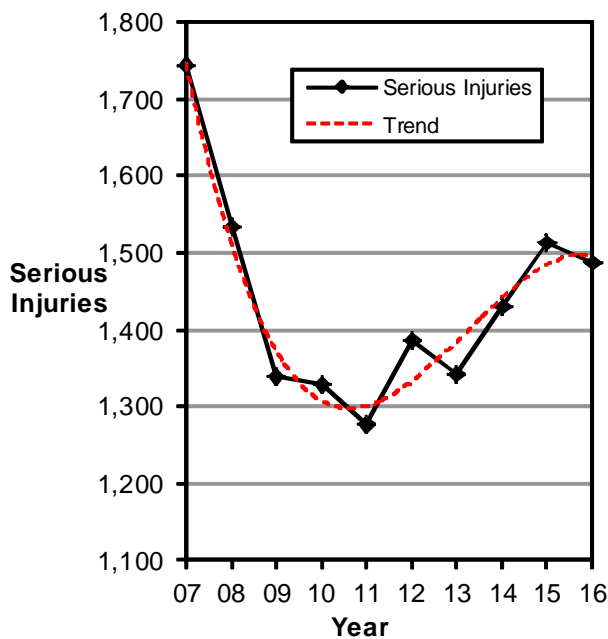
Serious Injuries

Serious Injuries (Utah 2007-2016)

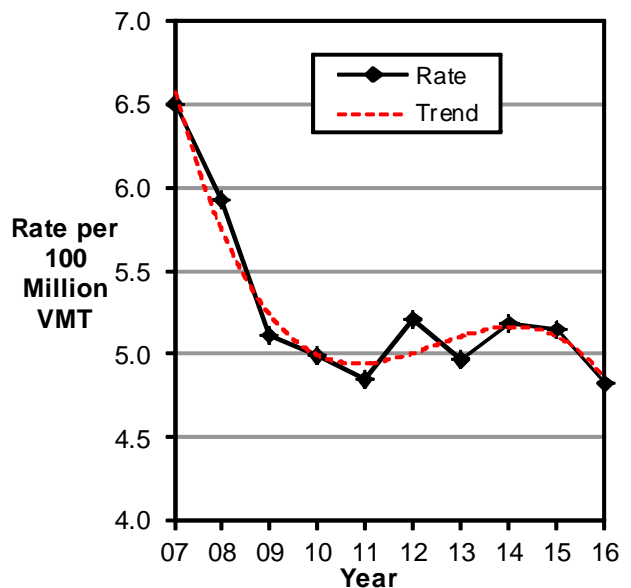
Year	Persons					
	Serious Injuries		Deaths		Total	
	#	Rate per 100 Million VMT	#	Rate per 100 Million VMT	#	Rate per 100 Million VMT
2007	1,743	6.50	299	1.11	2,042	7.61
2008	1,533	5.92	276	1.07	1,809	6.99
2009	1,340	5.11	244	0.93	1,584	6.04
2010	1,329	4.99	253	0.95	1,582	5.94
2011	1,278	4.84	243	0.92	1,521	5.77
2012	1,386	5.20	217	0.81	1,603	6.02
2013	1,343	4.97	220	0.81	1,563	5.79
2014	1,431	5.19	256	0.93	1,687	6.12
2015	1,512	5.14	278	0.95	1,790	6.09
2016	1,488	4.83	281	0.91	1,769	5.75
Total	14,383	5.26	2,567	0.94	16,950	6.20

- During the last 10 years, 14,383 people have suffered a serious injury in a motor vehicle crash. On average over the past 10 years, approximately 1,400 people are seriously injured and 257 people are killed in motor vehicle crashes a year.
- The serious injury rate per vehicle miles traveled decreased 26% from 2007-2016.
- 2007 had the highest serious injury rate per vehicle miles traveled while 2016 had the lowest.

Serious Injuries by Year (Utah 2007-2016)



Serious Injury Rates Per 100 Million Vehicle Miles Traveled (Utah 2007-2016)

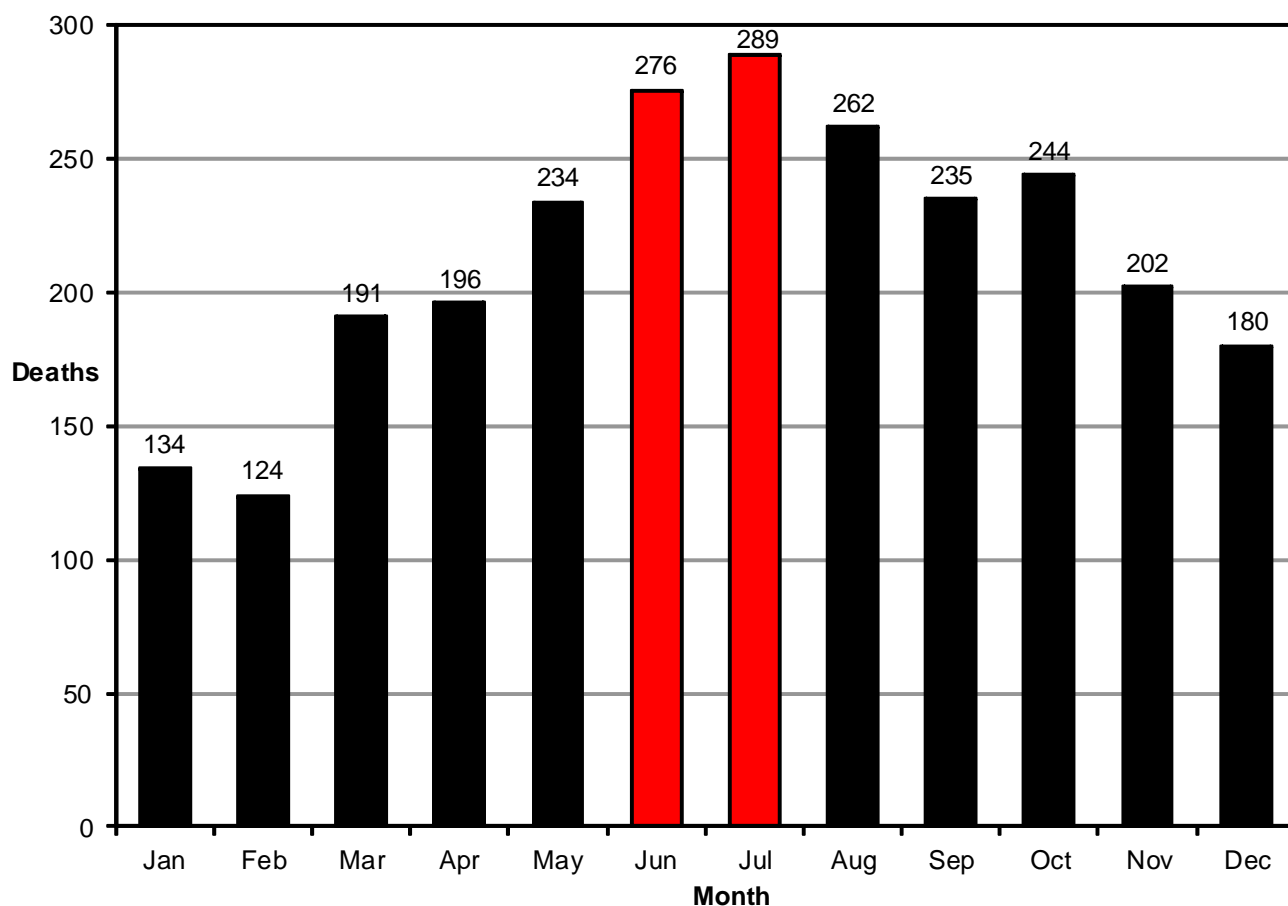


- The number of people seriously injured in a crash decreased after two years of increases.
- The serious injury rate per mile traveled has been fairly level the past eight years.

Deaths

Deaths by Month (Utah 2007-2016)

Month	Year										Total	
	2007	2008	2009	2010	2011	2012	2013	2014	2015	2016	#	%
January	16	23	15	8	16	7	4	17	14	14	134	5.2%
February	13	9	17	9	9	15	13	6	15	18	124	4.8%
March	24	12	27	20	21	20	13	15	24	15	191	7.4%
April	35	12	24	22	14	14	19	17	16	23	196	7.6%
May	24	31	21	23	12	23	15	24	29	32	234	9.1%
June	31	30	20	24	28	16	23	38	31	35	276	10.8%
July	35	29	25	28	22	25	30	34	30	31	289	11.3%
August	26	32	32	24	30	22	27	18	34	17	262	10.2%
September	30	23	19	24	30	17	19	26	17	30	235	9.2%
October	26	28	18	28	21	20	22	29	24	28	244	9.5%
November	21	25	13	18	17	23	23	15	20	27	202	7.9%
December	18	22	13	25	23	15	12	17	24	11	180	7.0%
Total	299	276	244	253	243	217	220	256	278	281	2,567	100.0%

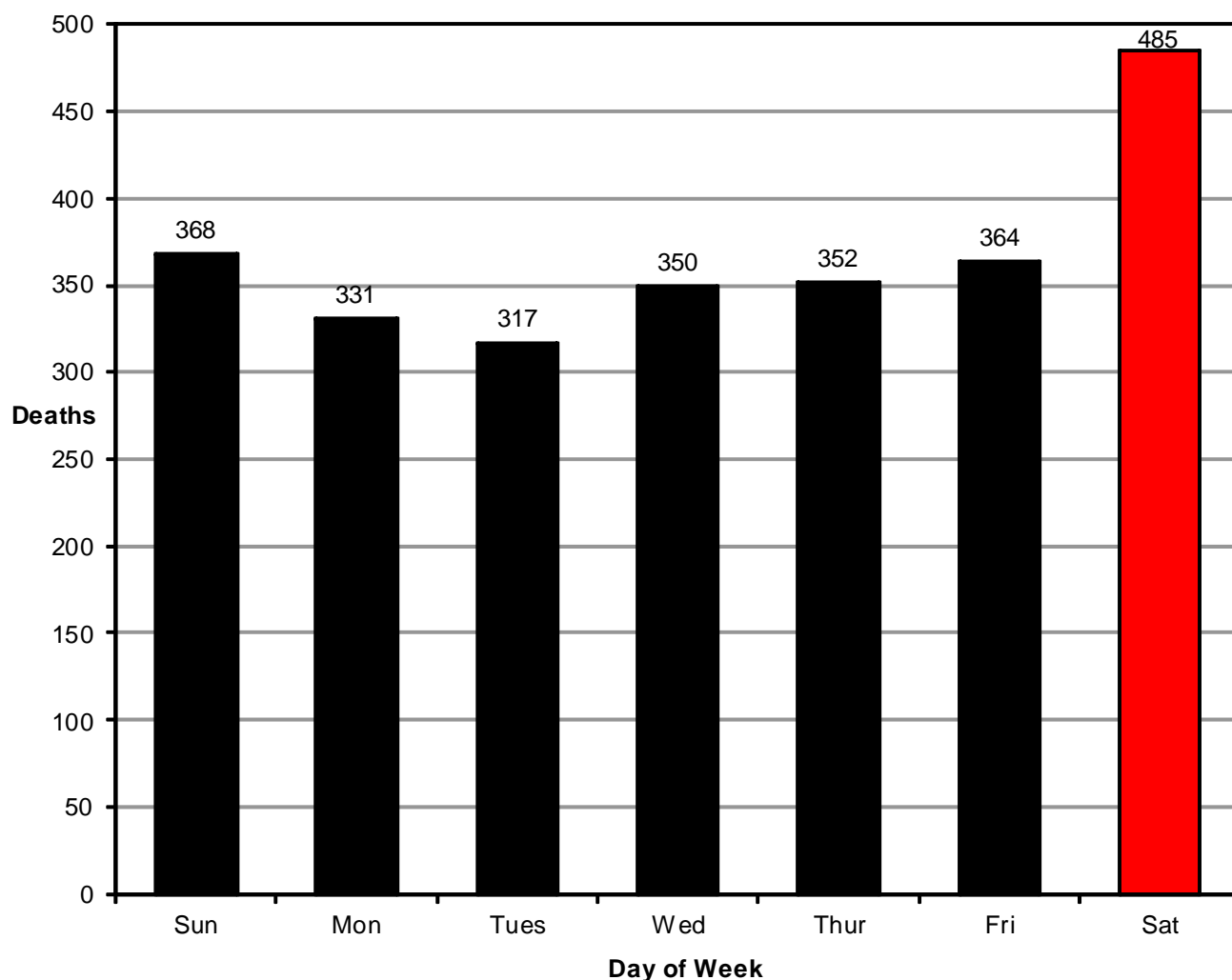


- In the last 10 years, July (289) and June (276) had the highest total number of motor vehicle crash deaths while February (124) and January (134) had the fewest.
- In the last 10 years, June 2014 had the highest number of deaths (38) while January 2013 had the fewest (4).
- In 2016, June (35) and May (32) had the highest number of deaths while December (11) had the fewest.

Deaths

Deaths by Day of Week (Utah 2007-2016)

Day of Week	Deaths										Total	
	Year										#	%
	2007	2008	2009	2010	2011	2012	2013	2014	2015	2016		
Sunday	55	47	35	30	27	41	29	29	40	35	368	14.3%
Monday	39	30	33	36	25	30	37	37	26	38	331	12.9%
Tuesday	39	43	39	31	32	24	20	24	33	32	317	12.3%
Wednesday	39	31	40	23	32	34	24	35	45	47	350	13.6%
Thursday	37	31	27	50	33	21	38	34	43	38	352	13.7%
Friday	30	42	32	26	40	29	36	40	46	43	364	14.2%
Saturday	60	52	38	57	54	38	36	57	45	48	485	18.9%
Total	299	276	244	253	243	217	220	256	278	281	2,567	100.0%

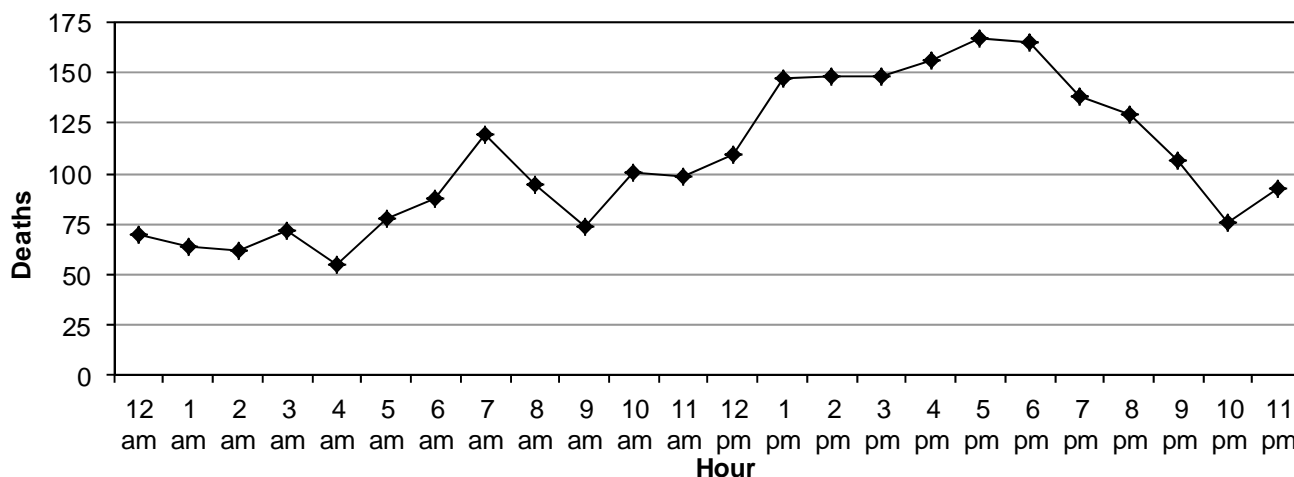


- In the last 10 years, Saturday (485) had the highest total number of motor vehicle crash deaths while Tuesday (317) had the fewest.
- In the last 10 years, Saturdays in 2007 had the highest number of deaths (60) while Tuesdays in 2013 had the fewest (20).
- In 2016, Saturday (48) had the highest number of deaths while Tuesday (32) had the fewest.

Deaths

Deaths by Hour (Utah 2007-2016)

Hour	Year										Total	
	2007	2008	2009	2010	2011	2012	2013	2014	2015	2016	#	%
Midnight	12	5	16	5	4	6	5	3	8	6	70	2.7%
1 a.m.	9	12	5	4	6	5	4	8	5	6	64	2.5%
2 a.m.	11	7	4	8	7	7	3	3	5	7	62	2.4%
3 a.m.	18	3	3	5	10	6	1	6	7	13	72	2.8%
4 a.m.	3	5	12	3	5	3	5	10	6	3	55	2.1%
5 a.m.	9	8	5	8	10	5	8	4	12	9	78	3.0%
6 a.m.	9	10	8	11	6	7	7	16	10	4	88	3.4%
7 a.m.	12	20	13	17	8	8	9	7	15	10	119	4.6%
8 a.m.	15	8	7	11	7	5	10	15	8	9	95	3.7%
9 a.m.	7	11	6	11	9	3	8	5	9	5	74	2.9%
10 a.m.	7	8	13	9	13	10	9	8	13	11	101	3.9%
11 a.m.	10	16	14	12	6	6	7	9	8	11	99	3.9%
Noon	12	14	7	13	10	8	14	12	6	14	110	4.3%
1 p.m.	15	8	13	14	17	8	19	19	5	29	147	5.7%
2 p.m.	15	9	7	20	14	19	9	14	23	18	148	5.8%
3 p.m.	21	13	22	13	12	10	14	15	13	15	148	5.8%
4 p.m.	14	14	13	12	13	24	14	15	19	18	156	6.1%
5 p.m.	24	18	19	12	13	20	15	15	17	14	167	6.5%
6 p.m.	15	19	10	16	20	11	12	18	29	15	165	6.4%
7 p.m.	16	21	11	15	12	8	12	10	11	22	138	5.4%
8 p.m.	14	16	14	10	14	15	14	10	11	11	129	5.0%
9 p.m.	5	20	13	9	11	6	9	9	14	11	107	4.2%
10 p.m.	10	4	7	4	7	11	5	12	9	7	76	3.0%
11 p.m.	15	6	1	10	9	6	7	11	15	13	93	3.6%
Total	298	275	243	252	243	217	220	254	278	281	2,561	100.0%



- In the last 10 years, 5 p.m. (167) and 6 p.m. (165) had the highest total number of motor vehicle crash deaths while 4 a.m. (55) and 2 a.m. (62) had the fewest.
- In the last 10 years, 1 p.m. in 2016 and 6 p.m. in 2015 had the highest number of deaths (29) while 11 p.m. in 2009 and 3 a.m. in 2013 had the fewest (1).
- In 2016, 1 p.m. (29) had the highest number of deaths while 4 a.m. (3) had the fewest.

Overview

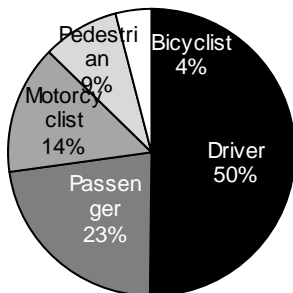
Deaths by Hour and Day of Week (Utah 2007-2016)

Deaths, 2007-2016								
Hour	Day of Week							Total #
	Sun	Mon	Tue	Wed	Thu	Fri	Sat	
Midnight	13	6	2	10	14	9	16	70
1 a.m.	18	3	5	8	2	11	17	64
2 a.m.	18	5	6	8	4	4	17	62
3 a.m.	14	17	4	5	6	8	18	72
4 a.m.	13	4	7	4	6	7	14	55
5 a.m.	14	7	9	6	6	19	17	78
6 a.m.	7	9	14	20	14	12	12	88
7 a.m.	15	16	17	17	22	17	15	119
8 a.m.	13	15	14	11	19	6	17	95
9 a.m.	5	19	11	5	11	9	14	74
10 a.m.	19	11	10	12	11	24	14	101
11 a.m.	11	17	9	12	13	17	20	99
Noon	13	11	16	26	14	13	17	110
1 p.m.	15	26	14	26	23	19	24	147
2 p.m.	31	12	16	25	22	13	29	148
3 p.m.	20	20	22	13	26	19	28	148
4 p.m.	22	20	21	18	19	23	33	156
5 p.m.	30	27	21	22	16	19	32	167
6 p.m.	10	26	20	21	25	30	33	165
7 p.m.	25	13	18	23	27	17	15	138
8 p.m.	20	14	27	14	8	27	19	129
9 p.m.	6	11	12	19	21	17	21	107
10 p.m.	5	10	10	12	9	9	21	76
11 p.m.	11	11	12	13	12	15	19	93
Total	368	330	317	350	350	364	482	2,561

- In the last 10 years, everyday 3 p.m. to 6:59 p.m. and Saturday from 8 p.m. to 11:59 p.m. had high numbers of motor vehicle crash deaths.
- In the last 10 years, weekdays 12 a.m. to 4:59 a.m. had low number of motor vehicle crash deaths.

Serious Injuries by Person Type (Utah 2007-2016)

Serious Injuries													
Person Type	Year											Total	
	2007	2008	2009	2010	2011	2012	2013	2014	2015	2016	#	%	
Driver	890	749	670	622	626	676	696	695	808	784	7,216	50.2%	
Passenger	454	371	325	320	261	307	244	317	335	322	3,256	22.6%	
Motorcyclist	214	229	195	203	197	196	224	230	203	197	2,088	14.5%	
Pedestrian	132	137	103	123	127	122	115	134	118	131	1,242	8.6%	
Bicyclist	53	47	47	61	67	85	64	55	48	54	581	4.0%	
Total	1,743	1,533	1,340	1,329	1,278	1,386	1,343	1,431	1,512	1,488	14,383	100.0%	

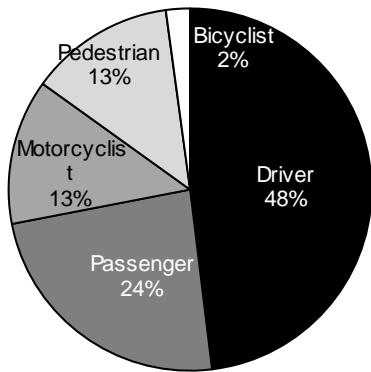


- During the last 10 years, 14,383 people had a serious injury in a crash; 50.2% were drivers, 22.6% were passengers, 14.5% were motorcyclists, 8.6% were pedestrians, and 4.0% were bicyclists.

Deaths

Traffic Deaths by Person Type (Utah 2007-2016)

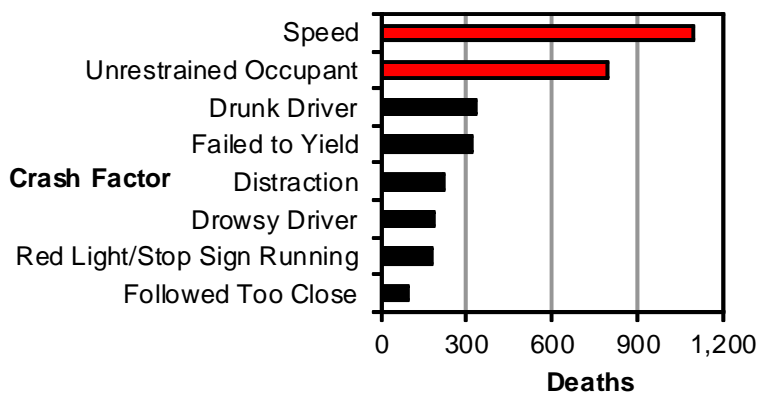
Person Type	Year										Total	
	2007	2008	2009	2010	2011	2012	2013	2014	2015	2016	#	%
Driver	139	133	119	129	123	106	106	115	136	128	1,234	48.1%
Passenger	89	69	70	68	55	45	47	50	52	68	613	23.9%
Motorcyclist	33	36	30	21	28	32	31	45	36	41	333	13.0%
Pedestrian	32	34	20	28	32	31	30	37	49	39	332	12.9%
Bicyclist	6	4	5	7	5	3	6	9	5	5	55	2.1%
Total	299	276	244	253	243	217	220	256	278	281	2,567	100.0%



- During the last 10 years, 2,567 people died in a crash; 48.1% were drivers, 23.9% were passengers, 13.0% were motorcyclists, 12.9% were pedestrians, and 2.1% were bicyclists.
- The number of pedestrians killed in 2015 was the highest amount in the last 10 years.
- The number of drivers killed in 2015 was the highest amount since 2007.
- The number of motorcyclists killed in 2014 was the highest amount in the last 10 years.

Traffic Deaths by Selected Contributing Factors (Utah 2007-2016)

Crash Factor	Year										Total	
	2007	2008	2009	2010	2011	2012	2013	2014	2015	2016	#	%
Speed	134	126	123	118	101	92	87	110	104	105	1,100	42.9%
Unrestrained Occupant	82	78	91	86	82	79	59	72	87	80	796	31.0%
Drunk Driver	42	34	31	25	39	20	23	45	37	36	332	12.9%
Failed to Yield	32	38	34	34	27	27	23	30	30	45	320	12.5%
Distraction	28	18	21	19	21	20	17	22	28	26	220	8.6%
Drowsy Driver	46	29	23	13	7	14	14	6	15	20	187	7.3%
Red Light/Stop Sign Running	15	19	26	18	18	14	16	18	18	18	180	7.0%
Followed Too Close	4	9	12	7	14	11	9	9	10	9	94	3.7%
Total Deaths	299	276	244	253	243	217	220	256	278	281	2,567	



- During the last 10 years, speed was the leading contributing factor accounting for 42.9% of deaths.
- Nearly one-third of the deaths were to unrestrained occupants. It is estimated that if everyone who died was restrained then 398 of these lives would have been saved.
- In 2016, deaths involving failing to yield were the highest in the last 10 years.

Counties

Traffic Deaths by County (Utah 2007-2016)

County	Deaths										Total		Rate per
	Year										#	%	Year per 100
	2007	2008	2009	2010	2011	2012	2013	2014	2015	2016			Million VMT
San Juan	16	15	7	2	7	8	7	8	5	10	85	3.3%	2.56
Wayne	0	1	3	0	0	1	3	3	1	0	12	0.5%	2.19
Kane	5	3	4	3	5	4	2	3	5	2	36	1.4%	2.17
Garfield	3	2	3	3	3	3	2	4	0	5	28	1.1%	2.15
Piute	2	2	0	0	1	0	0	0	0	1	6	0.2%	1.84
Sanpete	7	5	4	7	1	1	9	3	4	4	45	1.8%	1.81
Daggett	1	0	0	1	0	2	0	0	1	1	6	0.2%	1.73
Duchesne	4	2	6	10	10	3	4	9	2	1	51	2.0%	1.56
Uintah	9	10	6	6	7	9	2	8	5	3	65	2.5%	1.48
Tooele	10	15	11	12	10	17	8	15	14	20	132	5.1%	1.46
Rich	0	1	2	2	0	1	0	2	0	0	8	0.3%	1.46
Sevier	7	7	5	5	5	2	8	2	3	9	53	2.1%	1.45
Emery	7	8	6	5	5	2	6	2	6	9	56	2.2%	1.44
Wasatch	11	1	4	1	5	6	3	5	9	7	52	2.0%	1.29
Millard	15	7	5	7	3	10	7	4	9	5	72	2.8%	1.27
Carbon	5	2	3	2	9	2	4	4	8	3	42	1.6%	1.20
Grand	5	4	8	7	1	2	3	7	6	4	47	1.8%	1.16
Morgan	0	2	2	0	4	1	0	4	2	1	16	0.6%	1.07
Weber	25	15	23	21	21	13	18	16	21	19	192	7.5%	1.07
Box Elder	17	9	9	12	9	4	5	13	16	10	104	4.1%	1.03
Juab	8	5	8	7	5	1	3	2	0	5	44	1.7%	0.98
Washington	22	18	10	17	9	11	14	18	17	15	151	5.9%	0.91
Summit	6	12	10	5	9	8	4	6	7	4	71	2.8%	0.83
Beaver	3	2	6	1	1	1	4	2	5	0	25	1.0%	0.83
Cache	6	5	10	6	4	6	10	12	4	12	75	2.9%	0.75
Iron	8	3	12	8	10	0	8	3	2	4	58	2.3%	0.69
Salt Lake	54	64	46	61	66	64	53	66	76	69	619	24.1%	0.63
Utah	24	42	21	32	19	20	21	24	39	31	273	10.6%	0.58
Davis	19	14	10	10	14	15	12	11	11	27	143	5.6%	0.48
Total	299	276	244	253	243	217	220	256	278	281	2,567	100.0%	0.83

- During the last 10 years, nearly one-fourth (24.1%) of the traffic deaths occurred in Salt Lake County.
- Salt Lake, Utah, Weber, Washington, Davis, Tooele, and Box Elder Counties all had over 100 deaths over the last 10 years.
- Urban Counties accounted for 56.6% of the deaths.
- Over the last 10 years, Salt Lake County in 2015 had the highest number of deaths (76).
- Beaver, Daggett, Garfield, Iron, Juab, Morgan, Piute, Rich, and Wayne Counties had at least one year with no deaths.
- In 2016, Cache, Davis, Emery, Garfield, Sevier, and Tooele Counties had their highest total of deaths during the last 10 years.
- In 2016, Beaver, Duchesne, Kane, Rich, Summit, and Wayne Counties had their lowest total of deaths during the last 10 years.
- San Juan, Wayne, and Kane Counties had the highest death rate per vehicle mile traveled over the last 10 years.
- Davis, Utah, and Salt Lake Counties had the lowest death rate per vehicle mile traveled over the last 10 years.

Counties

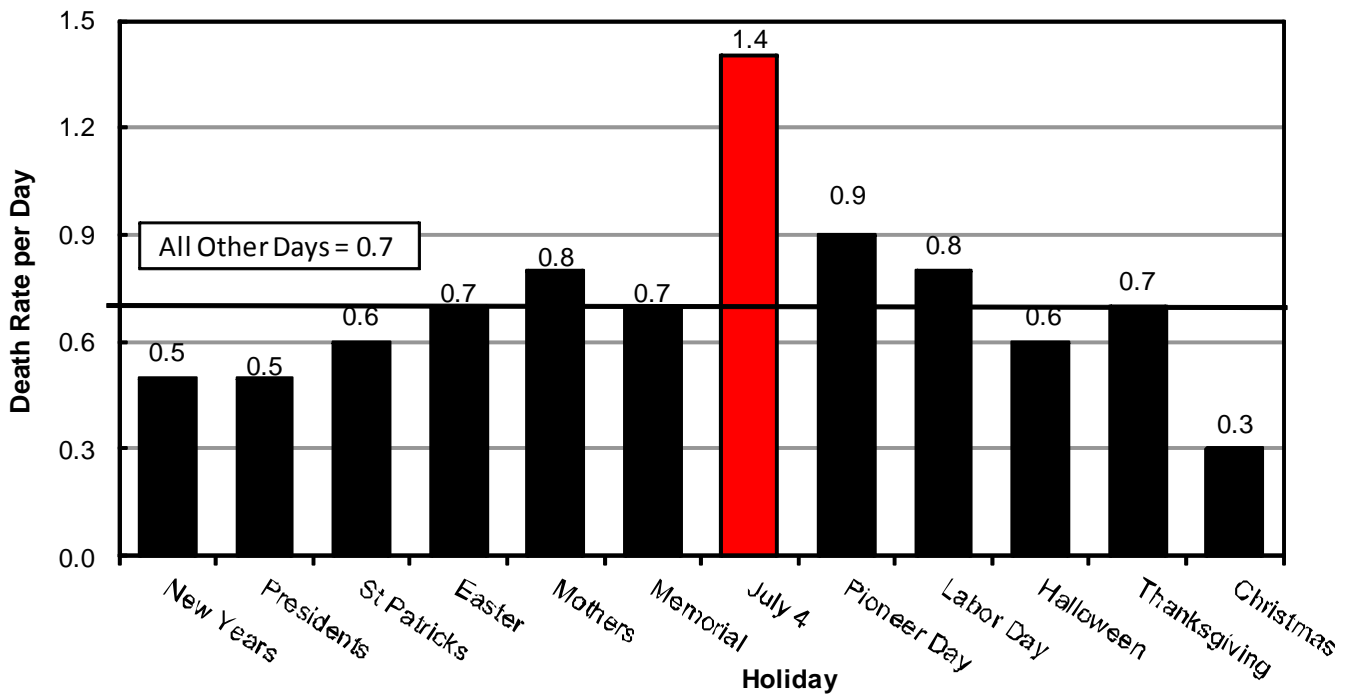
Crashes by County (Utah 2007-2016)

County	Crashes										Total		Rate per Year per 100 Million VMT
	Year										#	%	
	2007	2008	2009	2010	2011	2012	2013	2014	2015	2016			
Salt Lake	26,883	24,803	22,630	21,506	21,730	21,953	25,683	24,833	27,153	28,287	245,461	44.4%	249.4
Weber	4,870	4,333	4,082	3,872	3,849	3,910	4,181	4,037	4,314	4,413	41,861	7.6%	233.1
Cache	2,219	2,018	1,890	1,987	1,959	1,688	1,933	1,808	2,084	2,064	19,650	3.6%	197.3
Utah	9,530	8,431	7,558	7,589	9,495	7,789	7,625	7,444	8,805	9,365	83,631	15.1%	177.1
Davis	5,410	4,854	4,286	3,958	4,301	4,251	5,088	4,689	5,322	5,776	47,935	8.7%	162.0
Wasatch	724	637	524	554	585	592	570	584	759	726	6,255	1.1%	155.7
Uintah	861	816	681	542	564	673	676	581	564	499	6,457	1.2%	147.4
Duchesne	501	564	343	446	584	520	476	463	439	302	4,638	0.8%	141.6
Rich	84	95	83	79	79	79	70	62	65	81	777	0.1%	141.4
Garfield	204	189	143	178	147	161	134	148	190	230	1,724	0.3%	132.5
Summit	1,084	1,165	1,031	986	1,041	1,076	1,146	1,258	1,182	1,193	11,162	2.0%	130.3
Washington	2,435	2,104	1,871	1,656	1,768	1,936	2,071	2,210	2,575	2,706	21,332	3.9%	128.4
Kane	220	240	216	201	206	196	181	195	227	208	2,090	0.4%	125.7
Sanpete	393	300	244	228	308	302	296	318	364	364	3,117	0.6%	125.6
Carbon	458	494	505	414	566	406	346	384	397	385	4,355	0.8%	124.2
Wayne	58	104	77	56	46	54	52	67	76	64	654	0.1%	119.6
Sevier	536	483	548	430	420	386	337	333	397	390	4,260	0.8%	116.3
Morgan	171	214	129	173	154	147	194	174	173	166	1,695	0.3%	113.8
Box Elder	918	1,066	1,117	1,040	1,056	1,006	1,035	1,017	1,043	1,359	10,657	1.9%	105.6
Tooele	869	802	796	730	1,016	972	1,052	1,003	1,116	1,107	9,463	1.7%	104.8
Iron	901	819	829	886	722	791	821	843	956	951	8,519	1.5%	102.1
Daggett	50	55	36	27	22	34	35	33	35	14	341	0.1%	98.3
Piute	39	24	30	34	29	24	21	40	30	39	310	0.1%	95.0
Beaver	212	240	309	274	258	255	250	223	221	251	2,493	0.5%	82.5
San Juan	331	303	262	254	233	266	273	259	256	266	2,703	0.5%	81.6
Juab	368	337	393	352	341	274	273	256	307	353	3,254	0.6%	72.4
Millard	431	401	353	407	318	372	362	334	388	434	3,800	0.7%	67.3
Emery	257	251	216	281	256	246	245	220	289	256	2,517	0.5%	64.6
Grand	228	225	185	228	234	241	211	220	285	222	2,279	0.4%	56.2
Total	61,245	56,367	51,367	49,368	52,287	50,600	55,637	54,036	60,012	62,471	553,390	100.0%	179.8

- During the last 10 years, nearly one-half (44.4%) of the traffic crashes occurred in Salt Lake County.
- Salt Lake, Utah, Davis, Weber, and Washington Counties all had over 20,000 crashes over the last 10 years.
- Urban Counties accounted for 83.1% of the crashes.
- Over the last 10 years, Salt Lake County in 2016 had the highest number of crashes (28,287).
- In 2016, Box Elder, Davis, Garfield, Millard, Salt Lake, and Washington Counties had their highest total of crashes during the last 10 years.
- In 2016, Daggett, Duchesne, and Uintah Counties had their lowest total of crashes during the last 10 years.
- Salt Lake, Weber, and Cache Counties had the highest crash rate per vehicle mile traveled over the last 10 years.
- Grand, Emery, and Millard Counties had the lowest crash rate per vehicle mile traveled over the last 10 years.

Holidays

Holiday Death Rate Per Day (Utah 2007-2016)



Holiday Deaths

Year	New Years		Presidents		St Patricks		Easter		Mothers		Memorial Day		4th of July		Pioneer Day		Labor Day		Hallow- een		Thanks- giving		Christ- mas		Total		
	#	Rate per Day	#	Rate per Day	#	Rate per Day	#	Rate per Day	#	Rate per Day	#	Rate per Day	#	Rate per Day	#	Rate per Day	#	Rate per Day	#	Rate per Day	#	Rate per Day	#	Days	Rate per Day		
2007	0	0.0	1	0.3	3	1.0	2	0.7	1	0.3	2	0.5	3	1.0	4	1.3	6	1.5	5	1.7	6	1.2	1	0.3	34	40	0.9
2008	2	0.7	1	0.3	6	1.5	0	0.0	1	0.3	5	1.3	12	3.0	4	0.8	2	0.5	0	0.0	3	0.6	1	0.2	37	48	0.8
2009	1	0.2	3	0.8	2	0.7	4	1.3	2	0.7	4	1.0	1	0.3	1	0.3	2	0.5	1	0.3	0	0.0	0	0.0	21	45	0.5
2010	2	0.5	0	0.0	1	0.3	2	0.7	5	1.7	3	0.8	4	1.3	2	0.7	3	0.8	0	0.0	6	1.2	0	0.0	28	42	0.7
2011	3	1.0	0	0.0	0	0.0	1	0.3	0	0.0	1	0.3	3	0.8	1	0.3	3	0.8	5	1.3	0	0.0	1	0.3	18	45	0.4
2012	0	0.0	3	0.8	0	0.0	0	0.0	6	2.0	0	0.0	0	0.0	2	0.7	3	0.8	1	0.3	5	1.0	2	0.7	22	41	0.5
2013	0	0.0	3	0.8	0	0.0	5	1.7	2	0.7	5	1.3	10	2.0	1	0.3	3	0.8	0	0.0	4	0.8	0	0.0	33	44	0.8
2014	5	1.7	4	1.0	3	0.8	1	0.3	2	0.7	2	0.5	10	2.5	7	1.4	3	0.8	4	1.0	3	0.6	1	0.2	45	48	0.9
2015	1	0.2	1	0.3	2	0.7	2	0.7	1	0.3	3	0.8	1	0.3	1	0.3	4	1.0	3	1.0	2	0.4	1	0.3	22	45	0.5
2016	4	1.0	2	0.5	4	0.8	3	1.0	4	1.3	4	1.0	6	1.5	9	3.0	4	1.0	3	0.8	6	1.2	3	1.0	52	46	1.1
Total	18	0.5	18	0.5	21	0.6	20	0.7	24	0.8	29	0.7	50	1.4	32	0.9	33	0.8	22	0.6	35	0.7	10	0.3	312	444	0.7

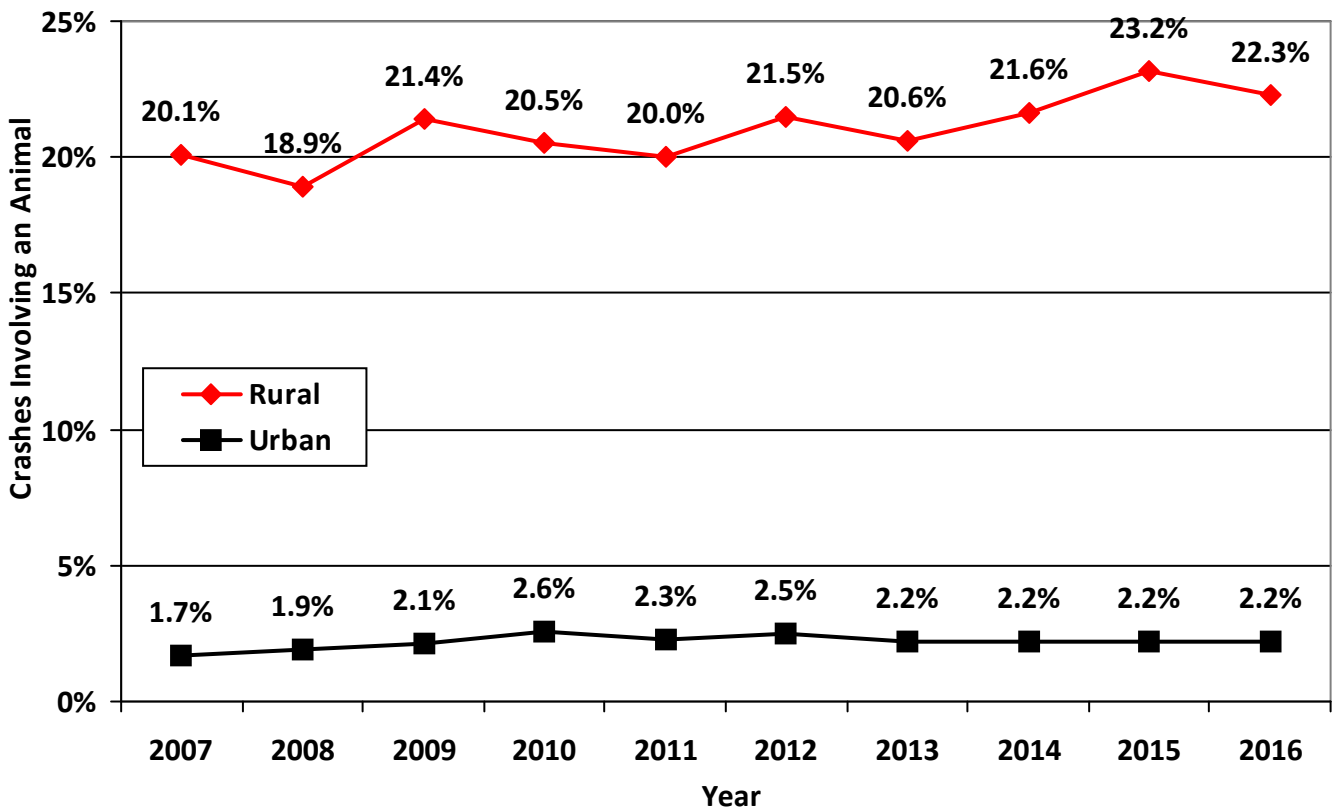
- Holiday deaths are a concern due to risk factors such as fatigue, impaired driving, long distance traveling, speeding, and traveling on unfamiliar roadways.
- Over the past 10 years, the 4th of July Holiday (1.4) had the highest rate of deaths while the Christmas (0.3) Holiday had the lowest rates.
- In 2016, the Pioneer Day Holiday had the highest death rate per day (3.0) while the President's Day Holiday had the lowest rate (0.5).
- 4th of July 2008 (3.0), Pioneer Day 2016 (3.0), 4th of July 2014 (2.5), Mother's Day 2012 (2.0), and 4th of July 2013 (2.0) had the highest death rates per day.

Note: Because of the differing lengths of holiday periods, the rate per day is provided and should be used for comparisons.

Animal-Related Crashes

Animal-Related Crashes by Rural and Urban (Utah 2007-2016)

Animal-Related Crashes									
Year	Rural			Urban			Total		
	All	Animal	%	All	Animal	%	All	Animal	%
	#	#	%	#	#	%	#	#	%
2007	9,898	1,994	20.1%	51,347	897	1.7%	61,245	2,891	4.7%
2008	9,824	1,856	18.9%	46,543	884	1.9%	56,367	2,740	4.9%
2009	9,050	1,933	21.4%	42,317	879	2.1%	51,367	2,812	5.5%
2010	8,800	1,805	20.5%	40,568	1,059	2.6%	49,368	2,864	5.8%
2011	9,185	1,838	20.0%	43,102	991	2.3%	52,287	2,829	5.4%
2012	9,073	1,952	21.5%	41,527	1,024	2.5%	50,600	2,976	5.9%
2013	9,056	1,868	20.6%	46,581	1,042	2.2%	55,637	2,910	5.2%
2014	9,015	1,943	21.6%	45,021	988	2.2%	54,036	2,931	5.4%
2015	9,760	2,267	23.2%	50,252	1,114	2.2%	60,012	3,381	5.6%
2016	9,860	2,196	22.3%	52,611	1,147	2.2%	62,471	3,343	5.4%
Total	93,521	19,652	21.0%	459,869	10,025	2.2%	553,390	29,677	5.4%



- Over the last 10 years, animal-related crashes accounted for 5.4% of all crashes in Utah. While animal crashes accounted for a minimal amount of crashes in Urban areas (2.2%), animal crashes accounted for over one-fifth (21.0%) of the crashes in Rural areas.
- Crashes in Rural areas involving an animal have shown an increasing trend while Urban area animal crashes have remained level.
- While animal crashes comprised 5.4% of total crashes statewide in 2016, they accounted for nearly one-fourth (22.3%) of crashes in rural counties.