

Speed is a leading unsafe driving behavior that contributes to crashes.

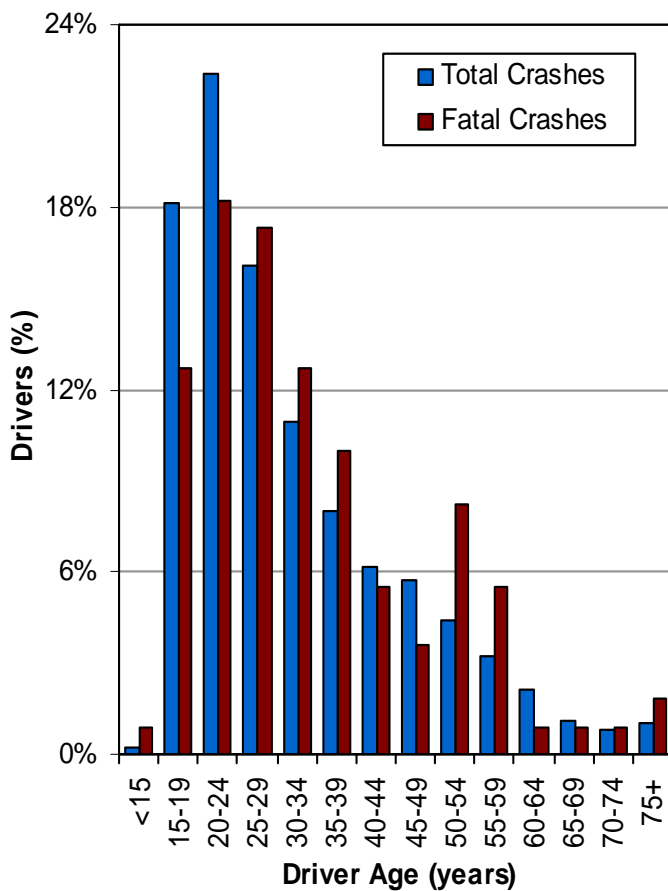
## Speed



### Did you know in 2008:

- 12,039 speed-related crashes occurred in Utah which resulted in 5,424 injured persons and 126 deaths.
- Speed was a factor in 43% of fatal crashes in 2008.
- Speed-related crashes were 2.8 times more likely to be fatal than other motor vehicle crashes.

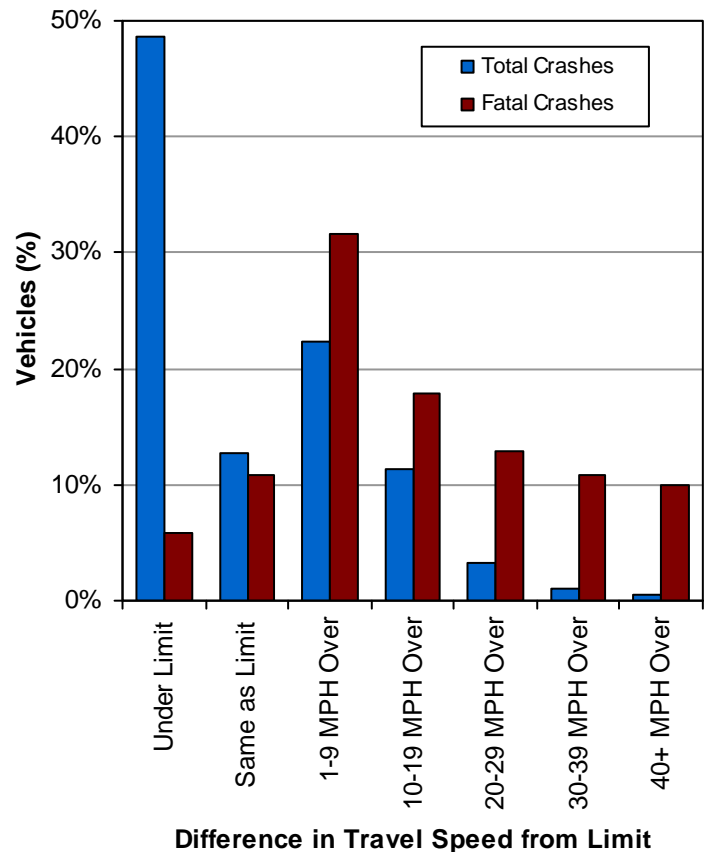
### Age of Drivers in Speed-Related Crashes (Utah 2008)



- Drivers aged 15-24 years had the highest percentage of total speed-related crashes and fatal crashes.



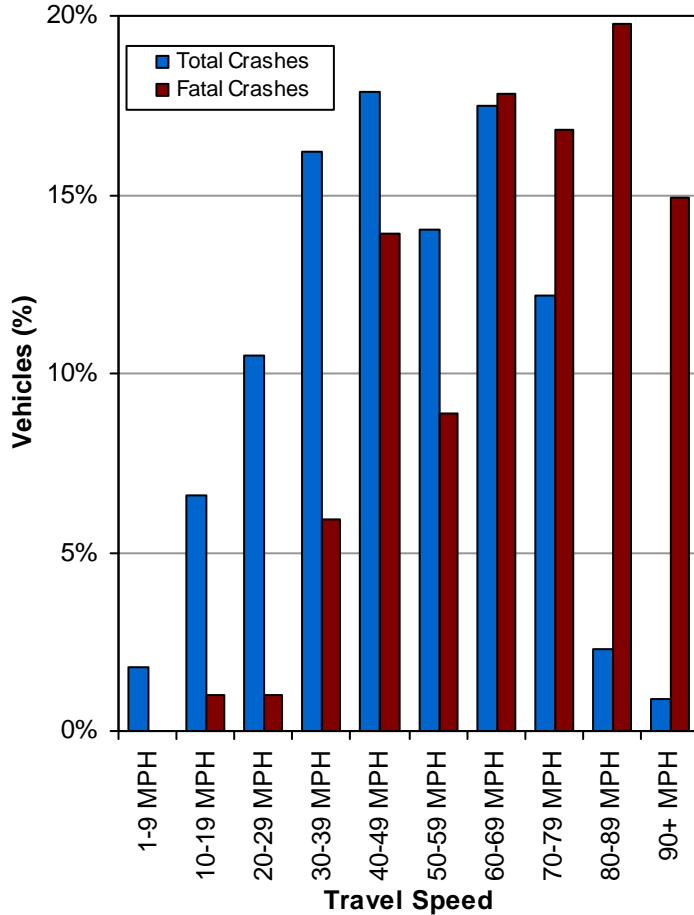
### Speed-Related Crashes by Difference in Travel Speed From Speed Limit (Utah 2008)



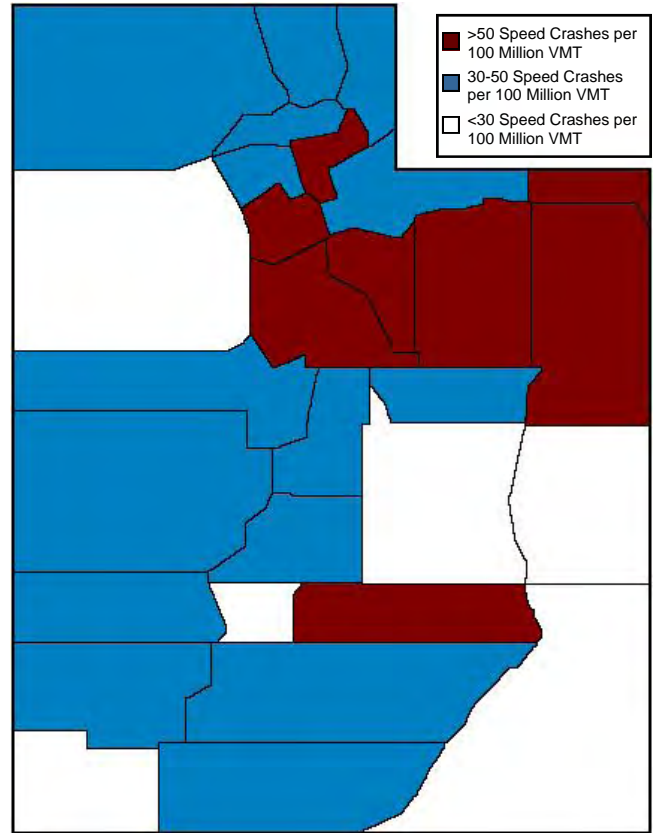
- Speed-related vehicles in fatal crashes were more likely to be exceeding the posted speed limit by greater amounts.
- Drivers become increased risks to themselves and other people on the highway due to higher speeds.

## Speed-Related Crashes by Travel Speed (Utah 2008)

# Speed



## Speed-Related Crash Rates by County (Utah 2008)



- Speed-related vehicles in fatal crashes were more likely to be traveling at higher speeds.
- The higher the speed the greater the amount of energy that must be absorbed in a crash, hence there is more likelihood of serious injury.

- Wayne, Wasatch, Morgan, and Daggett Counties had the highest speed-related crash rates per miles traveled.

Speeding is one of the most common factors contributing to traffic crashes. Speeding is dangerous because it:

- Magnifies drivers' errors;
- Extends the distance necessary to stop a vehicle;
- Increases the distance a vehicle travels while the driver reacts to a situation;
- Reduces a driver's ability to steer safely around curves or objects in the road;
- Decreases the effectiveness of vehicle design features, such as seat belts;
- Reduces the stability of the vehicle structure;
- Increases the number of crashes;
- Increases the severity of crashes. For every 10 MPH over 50 MPH, the risk of death in a crash is doubled.



Drivers need to remember there is a reason for speed limits. The roadways are a dangerous place and the speed limits are designed to protect everyone—drivers, passengers, and pedestrians. The posted speed limit is the law. Slow down and obey speed limits.