

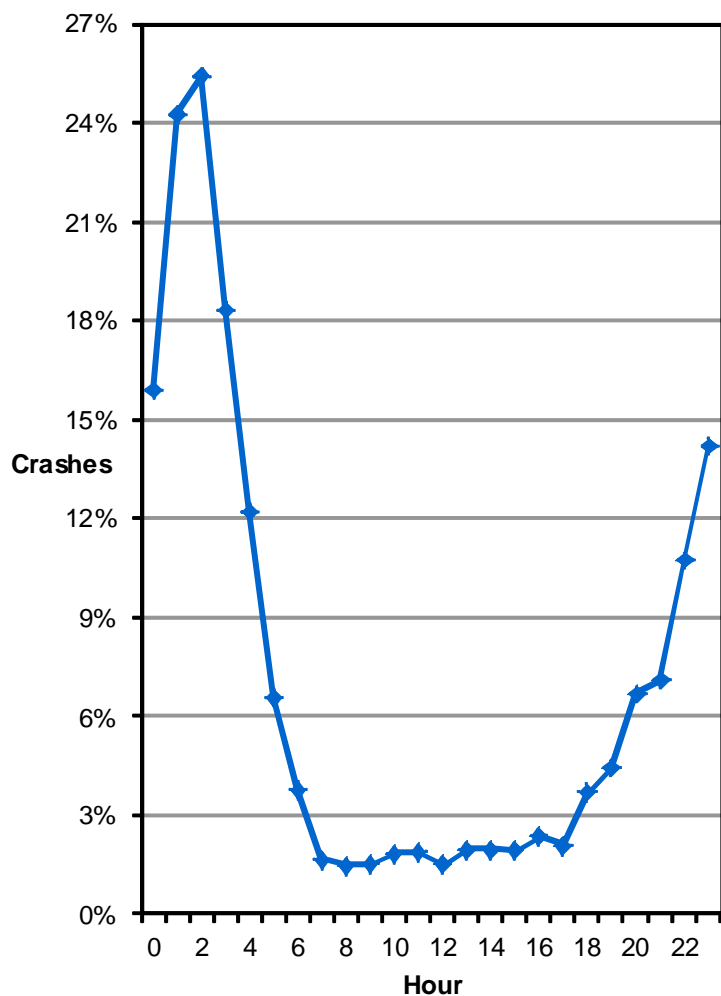
Did you know in 2014:

- 2,130 alcohol-related driver crashes occurred in Utah which resulted in 1,377 injured persons and 45 deaths.
- Alcohol-related driver crashes were 4.9 times more likely to be fatal than other crashes.
- The 45 deaths involving drunk drivers in 2014 was the highest since 2004.

Alcohol

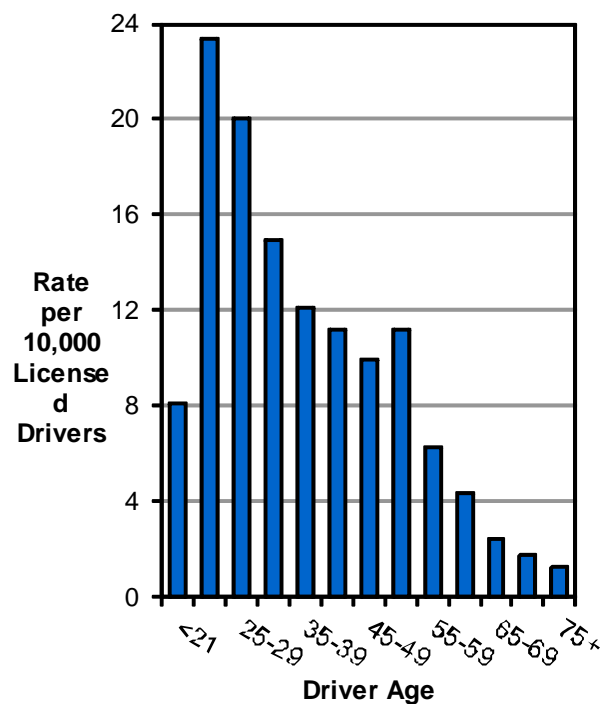


Percent of Total Crashes with an Alcohol-Related Driver by Hour (Utah 2014)



- While 4% of total crashes involved an alcohol-related driver, 16% of crashes occurring during the hours of 10:00 p.m.-4:59 a.m. involved an alcohol-related driver.

Rate of Alcohol-Related Drivers in Crashes per Licensed Driver (Utah 2014)



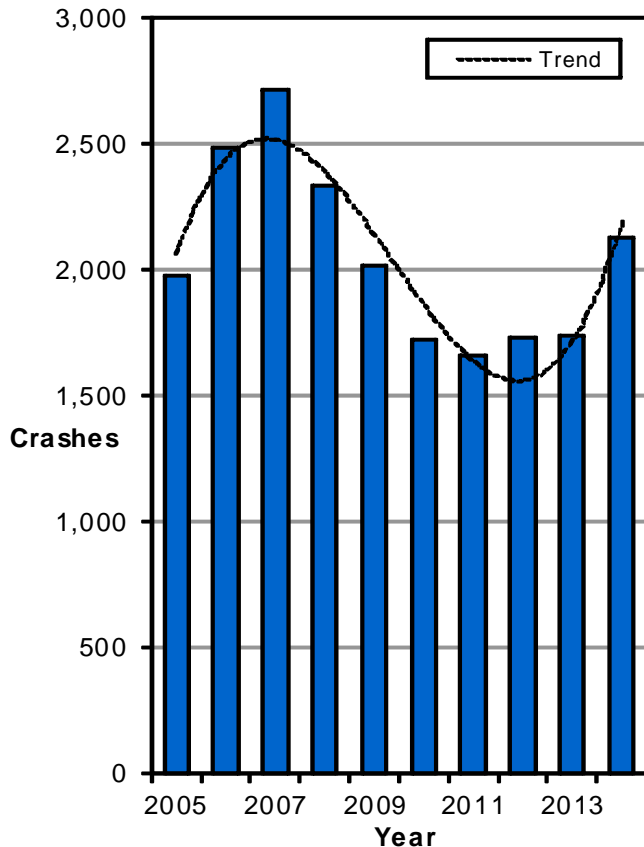
- Drivers aged 21 to 24 years had the highest rates of alcohol-related crashes.
- 158 (7%) of the drivers were under the age of 21 years.



Previous DUI (Utah 2014)

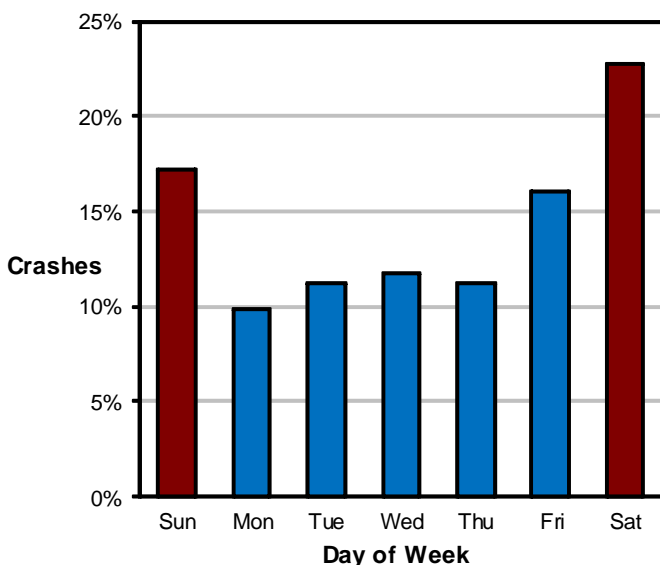
- 19% of the drunk drivers in fatal crashes were previously convicted of driving under the influence in the past three years.

Alcohol-Related Driver Crashes (Utah 2005-2014)



- The number of alcohol-related driver crashes in 2014 increased to the highest total since 2008.

Alcohol-Related Driver Crashes by Day of the Week (Utah 2014)

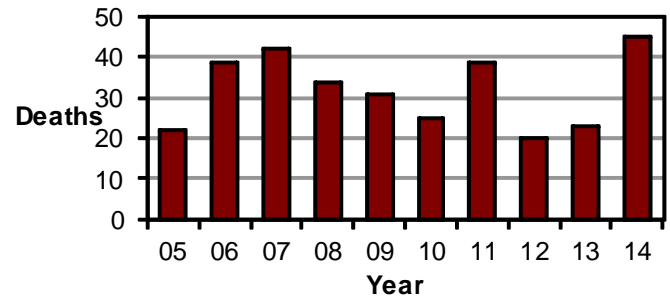


- The highest percentage of alcohol-related driver crashes occurred on weekends (40%).

Alcohol

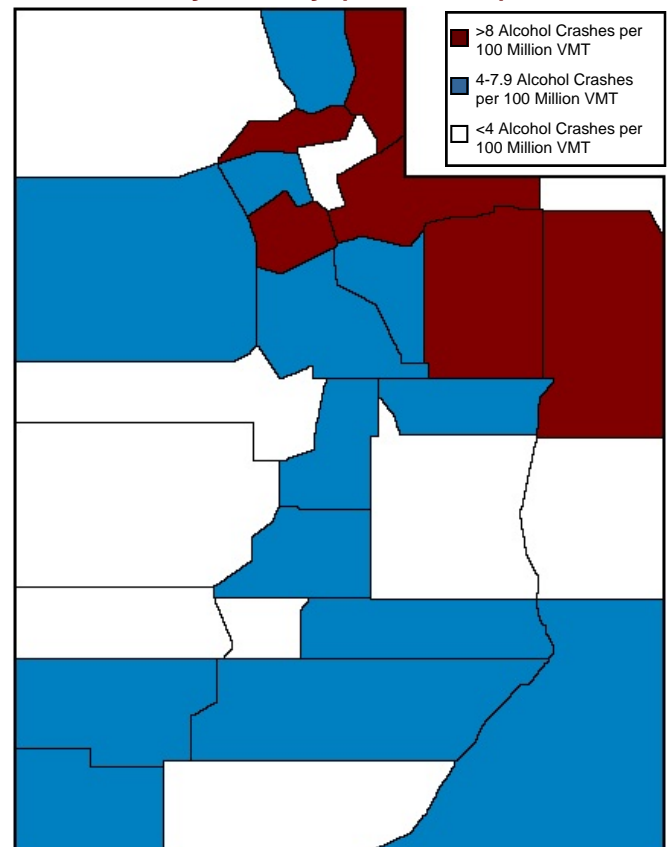


Deaths from Drunk Drivers (Utah 2005-2014)



- The 45 deaths in 2014 was the highest amount since 2004.

Alcohol-Related Driver Crashes by County (Utah 2014)



- Salt Lake, Duchesne, and Weber Counties had the highest rates of alcohol-related driver crashes per vehicle miles traveled (VMT).
- Morgan, Beaver, and Juab Counties had the lowest rates of alcohol-related driver crashes per VMT.