

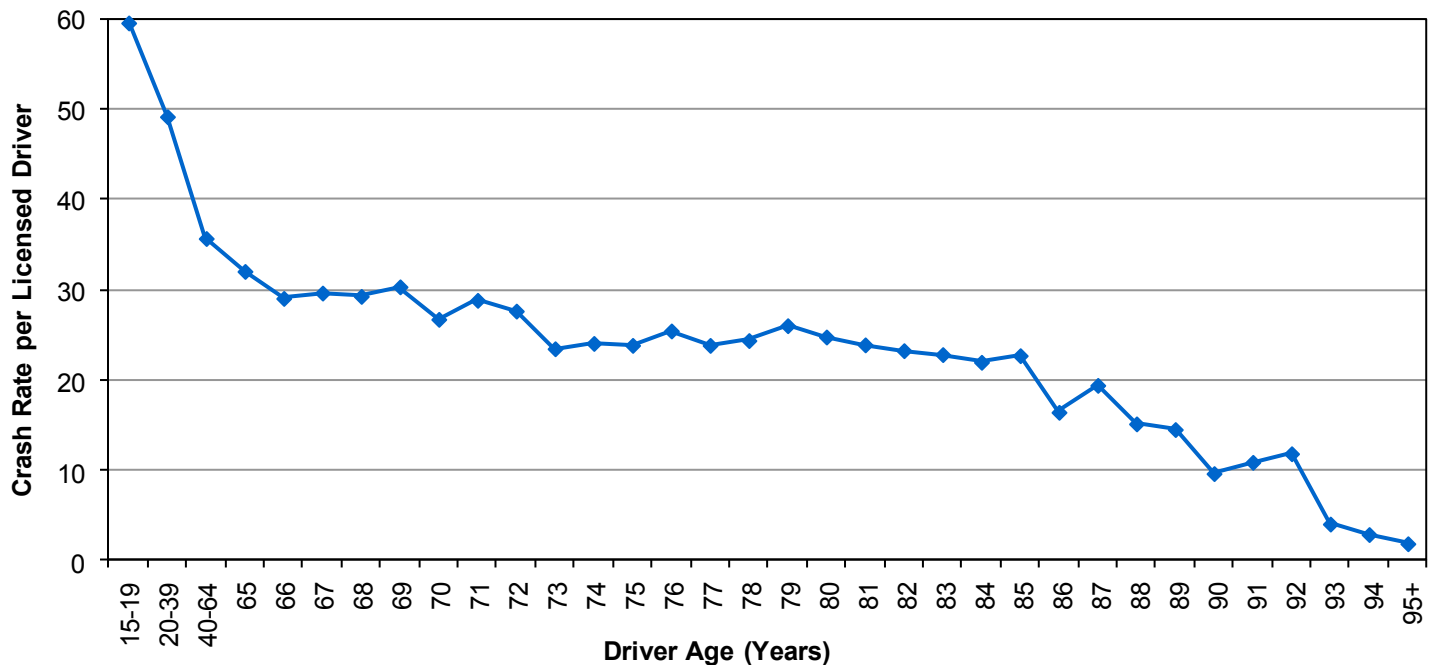
Did you know in 2012:

- Older drivers had the lowest crash rate per licensed driver.
- Older drivers were in 6,149 motor vehicle crashes which resulted in 3,079 injured persons and 27 deaths.
- Seniors represented 7% of people in a crash and 11% of the deaths.
- Although older drivers have the lowest crash rates of any drivers, older drivers are a concern due to declining health and fragility.

Older Drivers (Age 65+)



Crash Rates per Licensed Driver by Age (Utah 2012)



- The older the driver the less likely they were in a crash per licensed driver.

Leading Contributing Factors of Older Driver Crashes Compared to All Drivers (Utah 2012)

All Drivers in Crashes

1. Followed Too Closely (23%)
2. Failed to Yield Right of Way (18%)
3. Speed Too Fast (14%)
4. Failed to Keep in Proper Lane (13%)
5. Driver Distraction (10%)

Older Driver Crashes

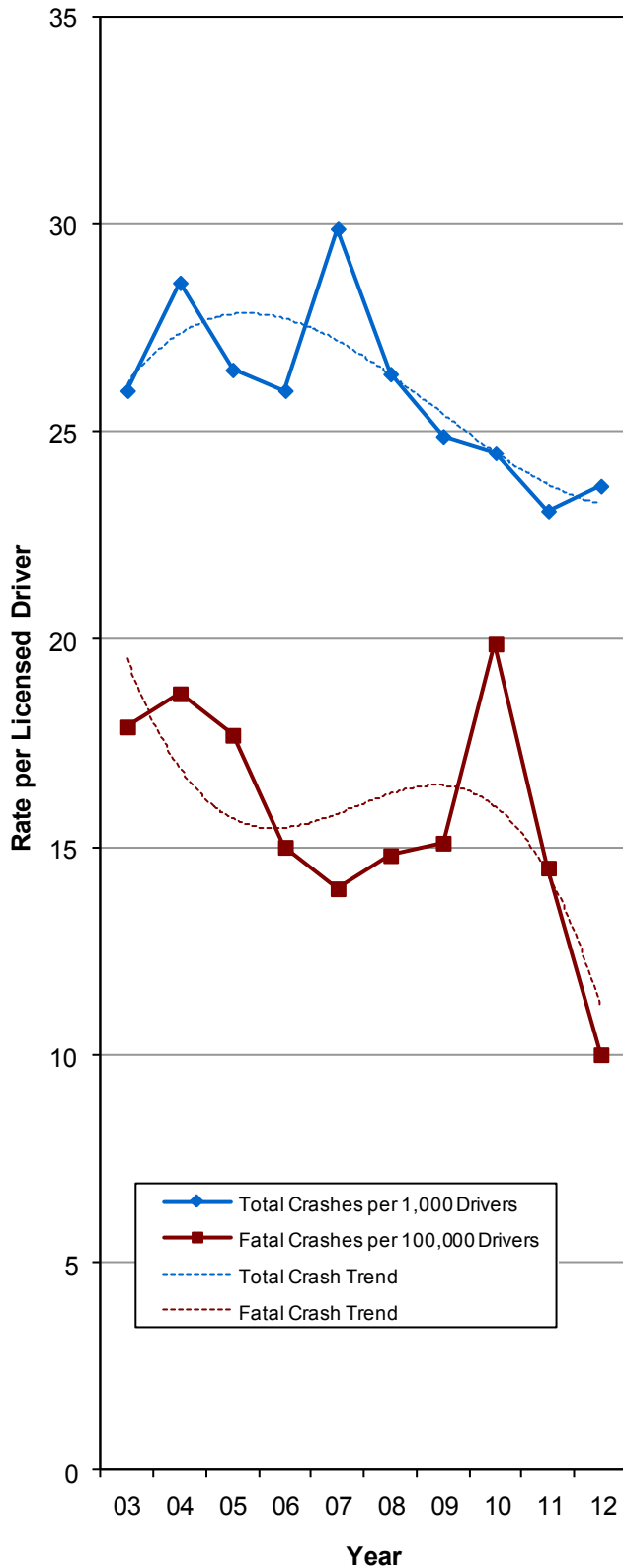
1. Failed to Yield Right of Way (18%)
2. Followed Too Closely (11%)
3. Failed to Keep in Proper Lane (7%)
4. Speed Too Fast (6%)
5. Disregard Traffic Signal/Sign (5%)

- Older drivers were less likely to have a contributing factor than other drivers in a crash.
- Compared to drivers of all ages, older drivers were more likely to have a contributing factor of failed to yield right of way, disregard traffic signal/sign, improper turn, and improper backing.

Older Drivers (Age 65+)

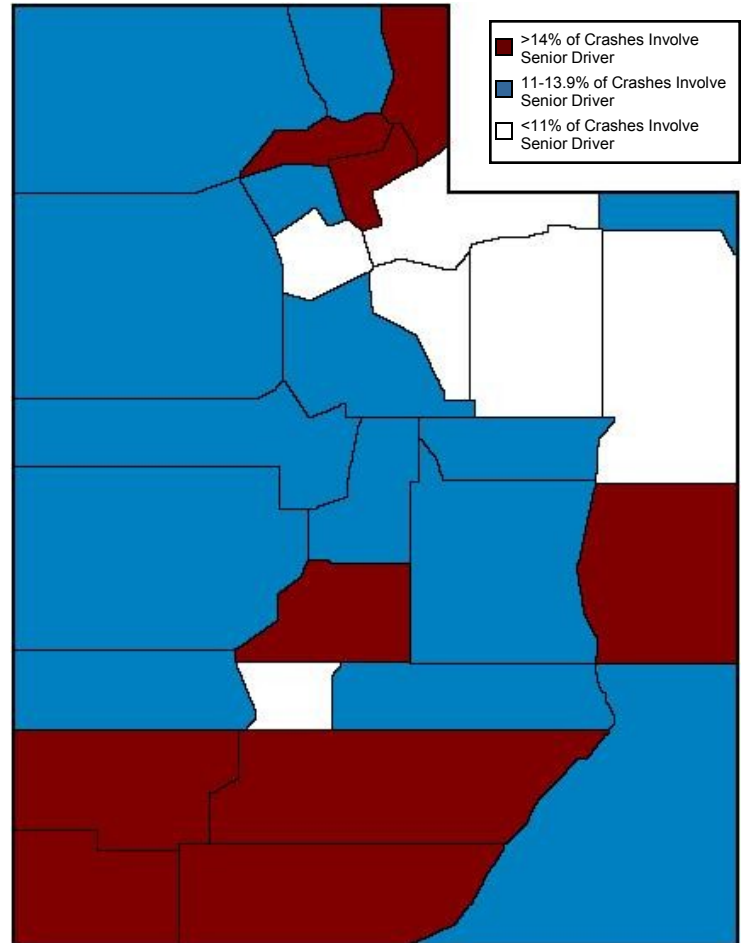


Older Driver Crash Trend (Utah 2003-2012)



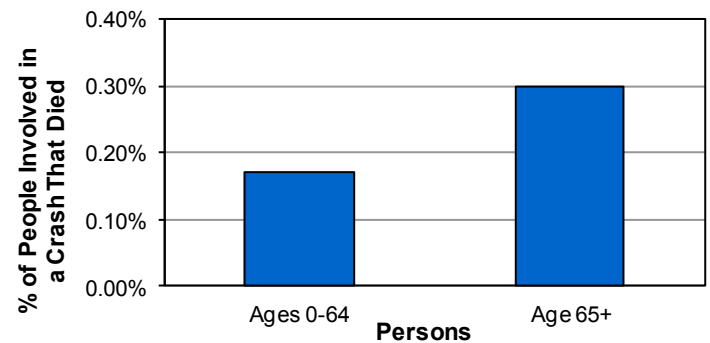
- The older driver crash rate per licensed driver increased in 2012 after four years of decreases.

Older Driver Crashes by County (Utah 2012)



- Washington, Grand, Rich, and Garfield counties had the highest percent of crashes that involved an older driver.

Injury Severity by Age (Utah 2012)



- People age 65+ were 2.6 times more likely to be killed in a crash than younger people.