



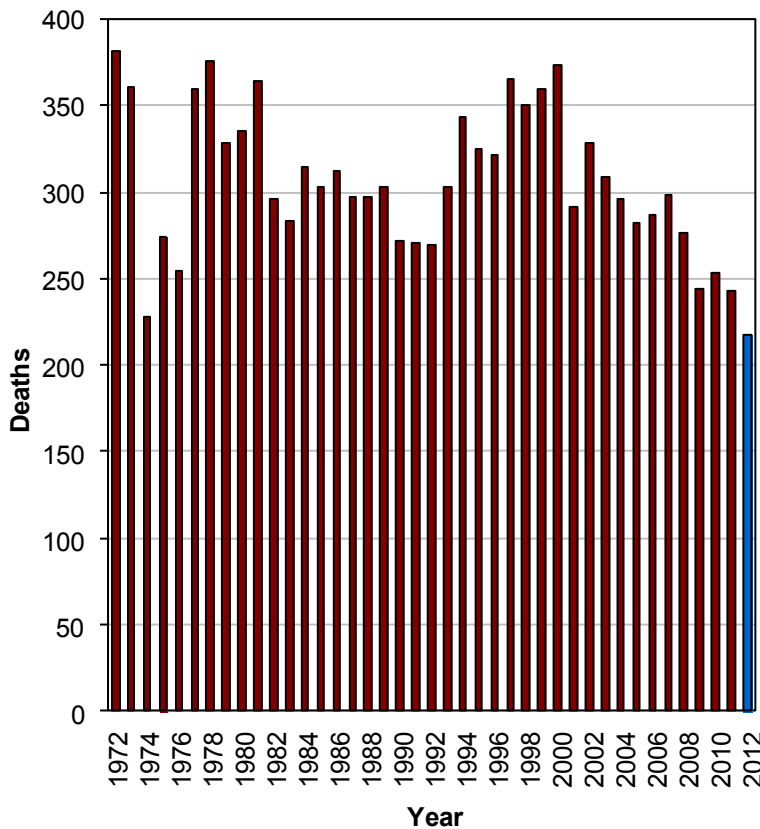
Did you know in 2012:

- 50,600 motor vehicle crashes occurred in Utah which resulted in 22,336 injured persons and 217 deaths.
- The Utah death rate per mile traveled was lower than the U.S. rate.
- A motor vehicle crash occurred in Utah every 10 minutes, a person was injured in a crash every 23 minutes, and a person died in a crash every 40 hours.

Overview

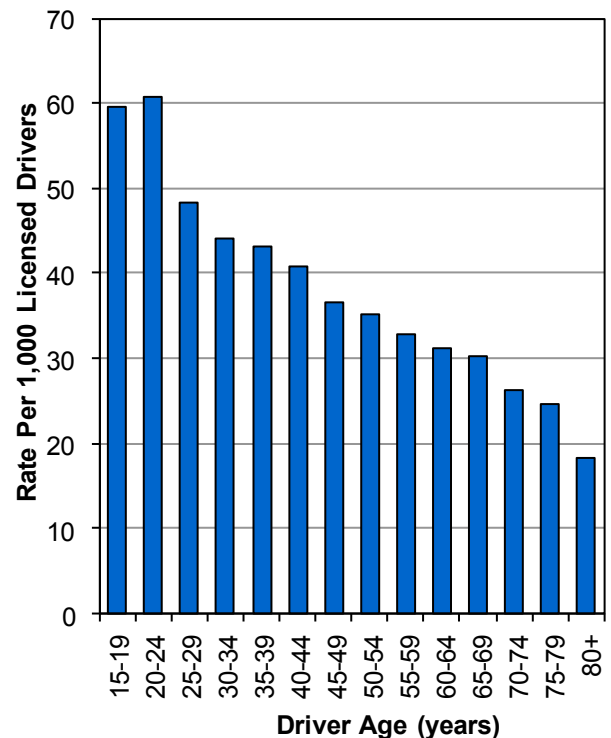


Deaths by Year (Utah 1972-2012)



- 2012 had the lowest deaths in Utah since 1959.

Crash Rates per Licensed Drivers by Age (Utah 2012)



- Drivers aged 20-24 years had the highest crash rates per licensed driver.

Crash Summary (Utah 2012)

Leading Crash Types

1. Followed Too Closely Crashes (22%)
2. Teen Driver Crashes (20%)
3. Speed Crashes (18%)
4. Failed to Yield Crashes (18%)
5. Inclement Weather Crashes (17%)

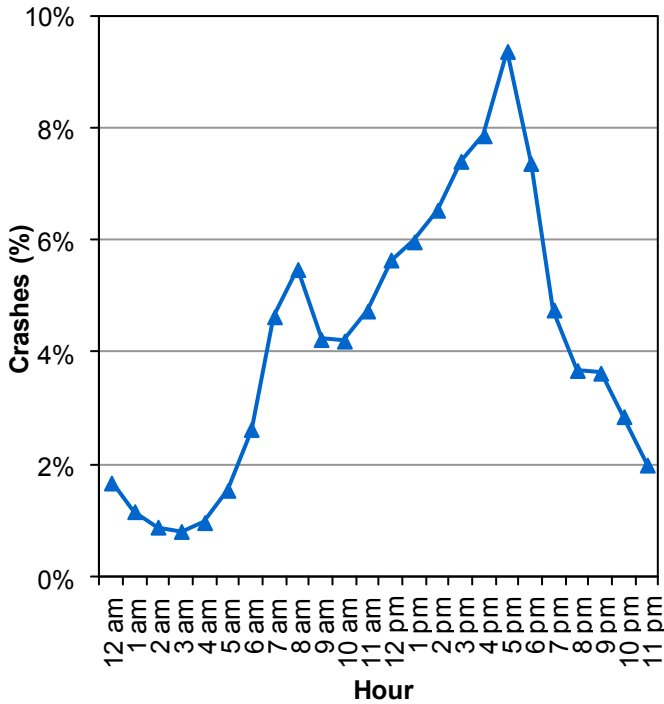
Leading Causes of Death

1. Speed (42%)
2. Failed to Keep in Proper Lane (39%)
3. Unrestrained Occupants (36%)
4. Failed to Yield (12%)
5. Distracted Driving & Drunk Driving (9%)

Overview



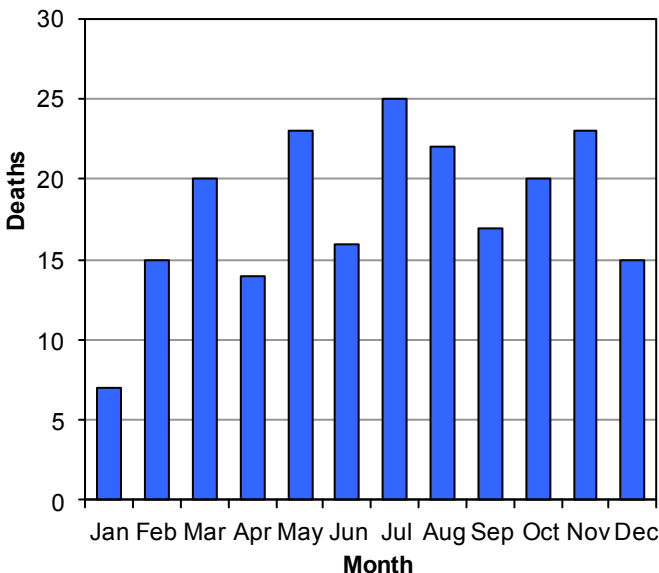
Motor Vehicle Crashes by Hour (Utah 2012)



- Crashes were highest between 2:00 p.m. and 6:59 p.m.

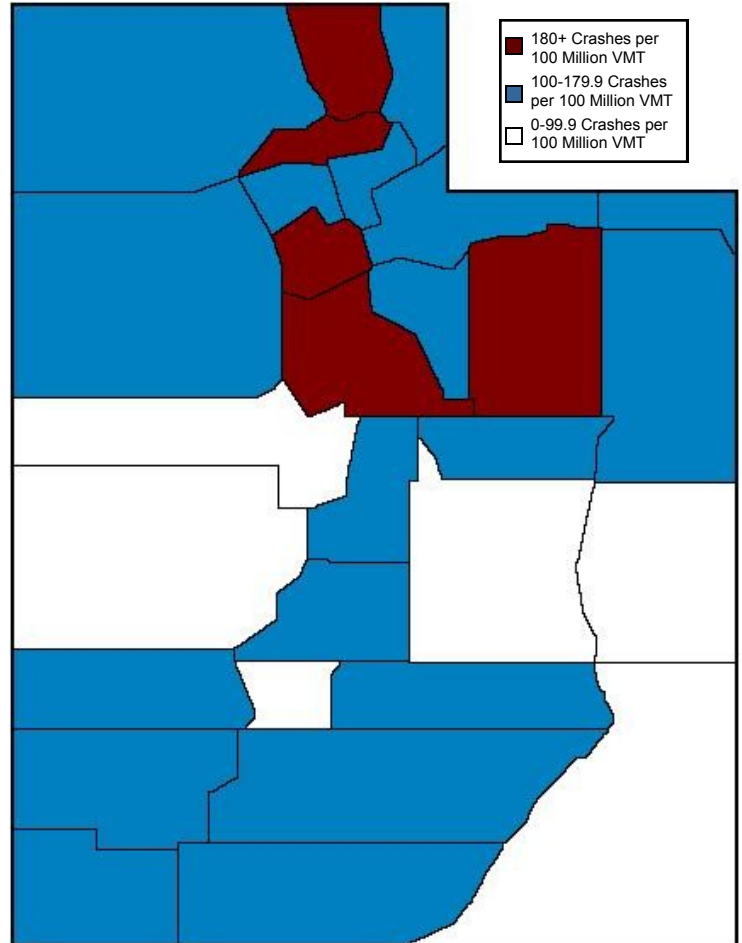
Vehicle rollovers were the most deadly event, being 6.7 times more likely to result in a death than other crashes.

Deaths by Month (Utah 2012)



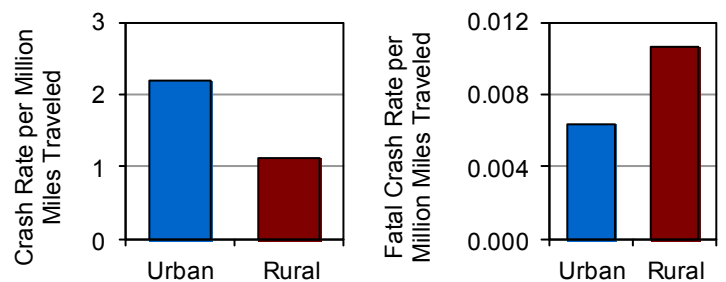
- July had the most deaths.

County Crash Rates by Miles Traveled (Utah 2012)



- Salt Lake, Weber, and Utah Counties had the highest crash rates per miles traveled.

Urban/Rural Location (Utah 2012)



- Urban areas had a higher rate of total crashes per vehicle mile traveled while rural areas had a higher fatal crash rate.
- Rural crashes were 3.1 times more likely to be fatal than urban crashes.