

Alcohol



Choose your ride.
 Drink. Drive. Go to Jail.



Section 4: Alcohol

2

Trends

Deaths and Fatal Crashes 2007-2016	2
Deaths Involving Drunk Drivers 2007-2016	2
Crashes 2007-2016	3
Crash Rates 2007-2016	4
Drunk Drivers in Fatal by Age 2007-2016	4
Fatal Crashes by County 2007-2016	5
Fatal Crashes by Month 2007-2016	6
Fatal Crashes by Day of Week 2007-2016	6
Fatal Crashes by Hour 2007-2016	7



Crash Conditions

County	8
Crash Severity	9
Month	9
Day of Week	10
Hour	10
% of Crashes Alcohol-Related by Hour	11
Persons Involved	11
Crashes by Day of Week and Hour	12
Previous DUI Convictions of Drunk Drivers	12
Driver Age	13
Driver Gender	14
Vehicle Type	14
Driver BAC in Fatal Crashes	14

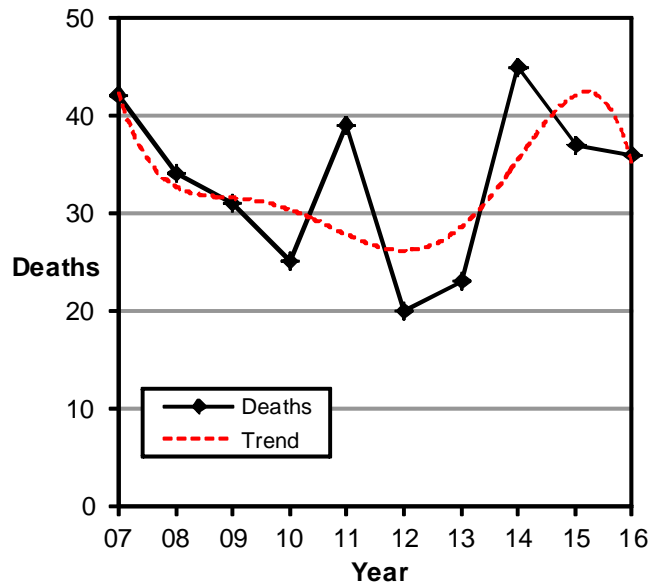
1

6

Trends

Fatal Crashes Involving Drunk Drivers (Utah 2007-2016)

Drunk Driver Crashes						
Year	Deaths			Fatal Crashes		
	All	Alcohol	%	All	Alcohol	%
	#	#	%	#	#	%
2007	299	42	14.0%	260	37	14.2%
2008	276	34	12.3%	244	32	13.1%
2009	244	31	12.7%	217	28	12.9%
2010	253	25	9.9%	218	24	11.0%
2011	243	39	16.0%	224	33	14.7%
2012	217	20	9.2%	200	19	9.5%
2013	220	23	10.5%	202	23	11.4%
2014	256	45	17.6%	222	37	16.7%
2015	278	37	13.3%	258	31	12.0%
2016	281	36	12.8%	259	32	12.4%
Total	2,567	332	12.9%	2,304	296	12.8%



- Over the past 10 years, the percentage of deaths and fatal crashes involving drunk drivers has fluctuated around 13% of all deaths and fatal crashes.
- The 45 deaths involving drunk drivers in 2014 was the highest since 2004.
- On average, 33 people die a year in Utah from drunk driver crashes.

Deaths Involving Drunk Drivers (Utah 2007-2016)

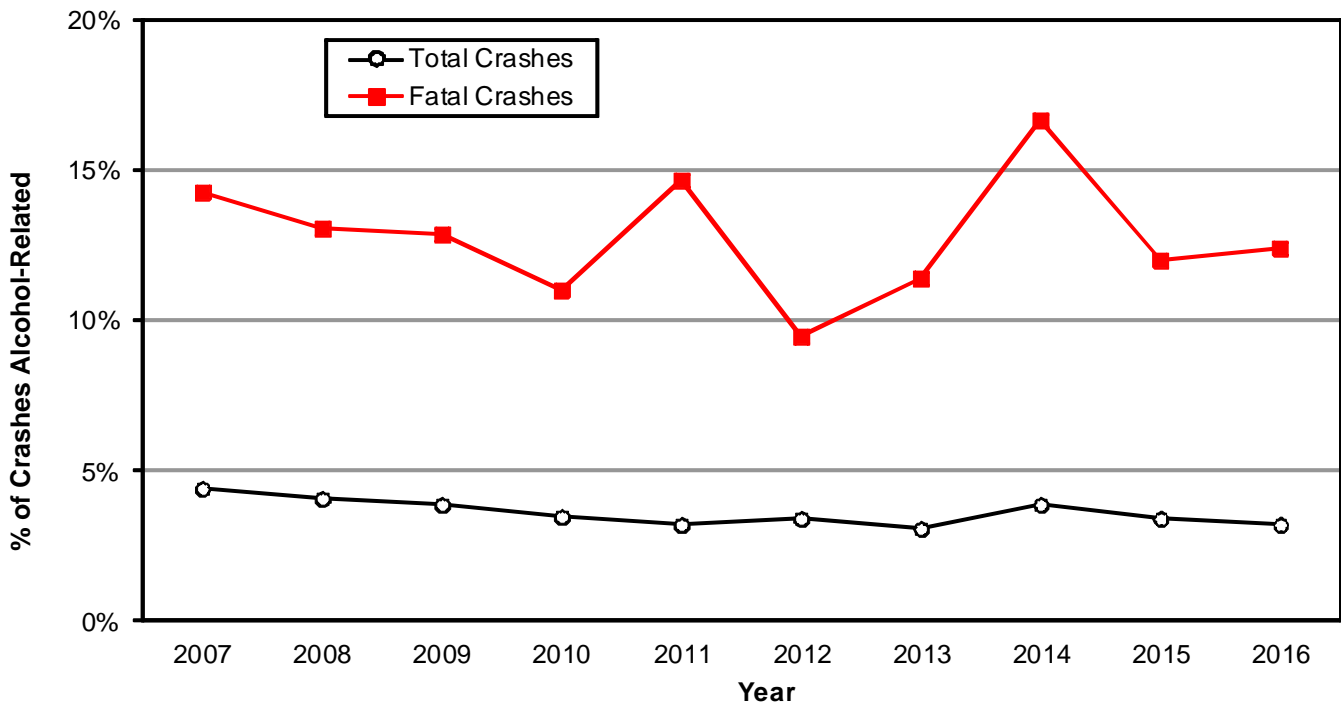
Deaths Involving Drunk Drivers by Person Type of Fatality														
Year	Drunk Driver		Passenger of Drunk Driver		Driver of Another Vehicle		Passenger of Another Vehicle		Pedestrian		Bicyclist		Total	
	#	%	#	%	#	%	#	%	#	%	#	%	#	%
2007	24	57.1%	9	21.4%	3	7.1%	4	9.5%	2	4.8%	0	0.0%	42	100.0%
2008	24	70.6%	8	23.5%	1	2.9%	1	2.9%	0	0.0%	0	0.0%	34	100.0%
2009	20	64.5%	6	19.4%	3	9.7%	1	3.2%	1	3.2%	0	0.0%	31	100.0%
2010	19	76.0%	3	12.0%	1	4.0%	0	0.0%	2	8.0%	0	0.0%	25	100.0%
2011	26	66.7%	7	17.9%	4	10.3%	1	2.6%	1	2.6%	0	0.0%	39	100.0%
2012	11	55.0%	3	15.0%	3	15.0%	3	15.0%	0	0.0%	0	0.0%	20	100.0%
2013	17	73.9%	4	17.4%	1	4.3%	0	0.0%	1	4.3%	0	0.0%	23	100.0%
2014	22	48.9%	8	17.8%	4	8.9%	5	11.1%	5	11.1%	1	2.2%	45	100.0%
2015	25	67.6%	6	16.2%	3	8.1%	1	2.7%	1	2.7%	1	2.7%	37	100.0%
2016	23	63.9%	5	13.9%	6	16.7%	2	5.6%	0	0.0%	0	0.0%	36	100.0%
Total	211	63.6%	59	17.8%	29	8.7%	18	5.4%	13	3.9%	2	0.6%	332	100.0%

- Of the 36 drunk driver crash deaths in 2016, 23 (64%) were to the drunk driver, 5 (14%) deaths were to passengers of the drunk driver, 8 (22%) were occupants of other vehicles, and 0 (0%) were non-motorists.
- Over the past 10 years, 64% of deaths involving drunk drivers were to the drunk driver, 18% of deaths were to passengers of the drunk driver, 14% of deaths were to occupants of another vehicle in the crash, and 4% were to non-motorists.

Trends

Alcohol-Related Driver Crashes (Utah 2007-2016)

Year	Property Damage Only			Injury			Fatal			Total		
	All	Alcohol		All	Alcohol		All	Alcohol		All	Alcohol	
	#	#	%	#	#	%	#	#	%	#	#	%
2007	42,368	1,441	3.4%	18,619	1,240	6.7%	258	37	14.3%	61,245	2,718	4.4%
2008	38,997	1,217	3.1%	17,125	1,081	6.3%	245	32	13.1%	56,367	2,330	4.1%
2009	35,398	1,108	3.1%	15,752	883	5.6%	217	28	12.9%	51,367	2,019	3.9%
2010	34,155	897	2.6%	14,995	802	5.3%	218	24	11.0%	49,368	1,723	3.5%
2011	36,418	910	2.5%	15,645	719	4.6%	224	33	14.7%	52,287	1,662	3.2%
2012	34,635	970	2.8%	15,765	738	4.7%	200	19	9.5%	50,600	1,727	3.4%
2013	39,301	953	2.4%	16,134	760	4.7%	202	23	11.4%	55,637	1,736	3.1%
2014	37,388	1,155	3.1%	16,426	938	5.7%	222	37	16.7%	54,036	2,130	3.9%
2015	42,089	1,160	2.8%	17,665	830	4.7%	258	31	12.0%	60,012	2,021	3.4%
2016	43,465	1,092	2.5%	18,747	846	4.5%	259	32	12.4%	62,471	1,970	3.2%
Total	384,214	10,903	2.8%	166,873	8,837	5.3%	2,303	296	12.9%	553,390	20,036	3.6%



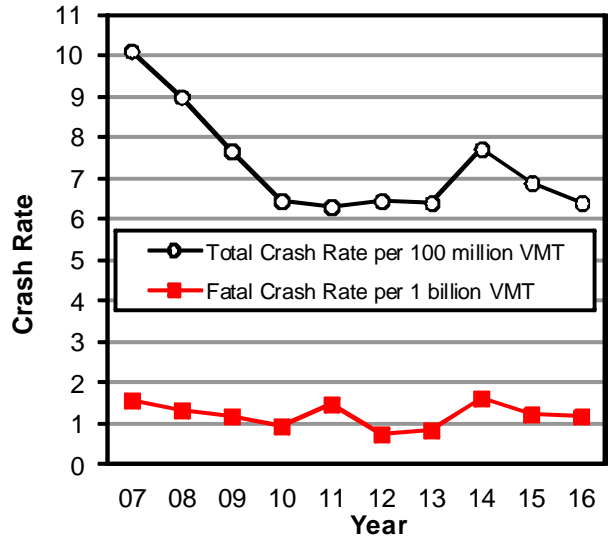
- Over the past 10 years, 3.6% of total crashes involved alcohol-related drivers compared with 12.9% of fatal crashes.
- Over the past 10 years, alcohol-related driver crashes were 3.9 times more likely to be fatal than crashes not involving an alcohol-related driver.

Note: A non-fatal crash is considered alcohol-related when the driver was cited for driving under the influence, at least one driver had a blood alcohol concentration of .08 grams per deciliter or above, or if the investigating officer suspected the driver used alcohol. A drunk driver fatal crash is a crash resulting in one or more deaths involving at least one driver with a blood alcohol concentration of .08 grams per deciliter or above.

Trends

Alcohol-Related Driver Crash Rates (Utah 2007-2016)

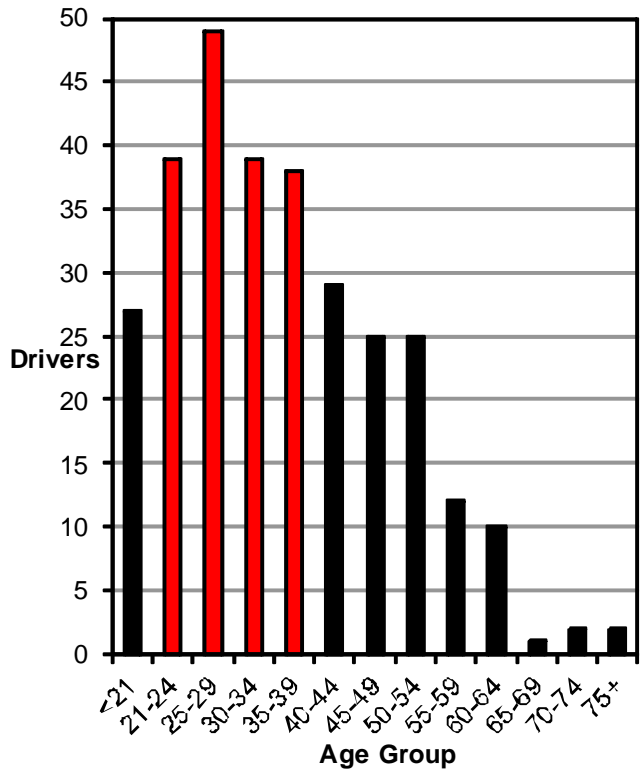
Alcohol-Related Driver Crashes				
Year	Alcohol Crashes		Alcohol Deaths	
	#	Rate per 100 million vehicle miles traveled	#	Rate per 100 million vehicle miles traveled
2007	2,718	10.13	42	0.157
2008	2,330	9.00	34	0.131
2009	2,019	7.70	31	0.118
2010	1,723	6.47	25	0.094
2011	1,662	6.30	39	0.148
2012	1,727	6.48	20	0.075
2013	1,736	6.43	23	0.085
2014	2,130	7.72	45	0.163
2015	2,021	6.88	37	0.126
2016	1,970	6.40	36	0.117
Total	20,036	7.33	332	0.121



- Over the past 10 years, the year 2007 had the highest rate (10.13) of alcohol crashes per 100 million vehicle miles traveled while the year 2011 had the lowest rate (6.30).
- Over the past 10 years, the year 2014 had the highest rate (0.163) of deaths involving a drunk driver per 100 million vehicle miles traveled while the year 2012 had the lowest rate (0.075).

Drunk Drivers in Fatal Crashes by Age (Utah 2007-2016)

Drunk Drivers in Fatal Crashes												
Age	Year										Total	
	07	08	09	10	11	12	13	14	15	16	#	%
<21	7	2	2	3	4	0	2	2	3	2	27	9.1%
21-24	5	4	3	3	6	2	1	5	5	5	39	13.1%
25-29	4	5	2	5	7	4	3	7	4	8	49	16.4%
30-34	2	6	3	5	5	2	4	2	6	4	39	13.1%
35-39	7	6	3	1	3	4	1	8	4	1	38	12.8%
40-44	3	3	6	3	0	1	4	4	2	3	29	9.7%
45-49	4	1	6	2	4	1	2	1	1	3	25	8.4%
50-54	3	3	1	2	2	2	1	5	5	1	25	8.4%
55-59	2	0	1	1	0	1	2	1	1	3	12	4.0%
60-64	0	1	1	0	1	2	2	2	0	1	10	3.4%
65-69	0	0	0	0	1	0	0	0	0	0	1	0.3%
70-74	0	1	0	0	0	0	0	0	0	1	2	0.7%
75+	0	1	0	0	0	0	1	0	0	0	2	0.7%
Unk	0	0	0	0	0	0	0	0	0	0	0	0.0%
Total	37	33	28	25	33	19	23	37	31	32	298	100.0%



- Over the past 10 years, drivers aged 21-39 years had the highest number of drunk drivers in fatal crashes.
- Over the past 10 years, drivers aged 55+ years had the lowest number of drunk drivers in fatal crashes.

Trends

Fatal Crashes Involving Drunk Drivers by County (Utah 2007-2016)

Fatal Crashes Involving Drunk Drivers												
County	Year										Total	
	2007	2008	2009	2010	2011	2012	2013	2014	2015	2016	#	%
Salt Lake	8	6	5	3	8	5	3	17	10	8	73	24.7%
Utah	4	5	0	2	1	1	3	2	3	3	24	8.1%
Tooele	3	3	1	1	0	3	1	1	0	6	19	6.4%
Summit	1	4	2	1	1	3	0	0	3	2	17	5.7%
Davis	1	2	1	3	2	0	2	2	1	1	15	5.1%
Weber	4	0	3	1	1	0	1	1	2	2	15	5.1%
Washington	0	5	1	0	0	1	2	1	1	2	13	4.4%
Duchesne	0	0	2	2	3	0	3	2	0	0	12	4.1%
San Juan	2	2	1	1	1	1	0	1	2	1	12	4.1%
Uintah	1	1	0	2	1	1	0	4	1	0	11	3.7%
Grand	0	0	3	2	1	1	1	0	2	0	10	3.4%
Carbon	2	0	0	0	3	0	1	1	1	1	9	3.0%
Millard	0	0	2	0	0	2	1	1	1	1	8	2.7%
Box Elder	2	0	1	1	0	0	0	1	1	1	7	2.4%
Cache	0	0	1	0	2	0	2	2	0	0	7	2.4%
Juab	3	0	0	2	1	0	1	0	0	0	7	2.4%
Emery	1	1	1	1	1	0	0	0	1	0	6	2.0%
Iron	2	0	0	1	2	0	1	0	0	0	6	2.0%
Morgan	0	2	0	0	2	0	0	0	0	0	4	1.4%
Wasatch	0	0	1	1	1	0	0	0	1	0	4	1.4%
Garfield	0	0	0	0	1	0	1	0	0	1	3	1.0%
Kane	0	1	1	0	0	0	0	0	0	1	3	1.0%
Sanpete	2	0	0	0	0	0	0	0	0	1	3	1.0%
Beaver	0	0	1	0	0	1	0	0	0	0	2	0.7%
Piute	1	0	0	0	1	0	0	0	0	0	2	0.7%
Rich	0	0	1	0	0	0	0	1	0	0	2	0.7%
Sevier	0	0	0	0	0	0	0	0	0	1	1	0.3%
Wayne	0	0	0	0	0	0	0	0	1	0	1	0.3%
Daggett	0	0	0	0	0	0	0	0	0	0	0	0.0%
Total	37	32	28	24	33	19	23	37	31	32	296	100.0%

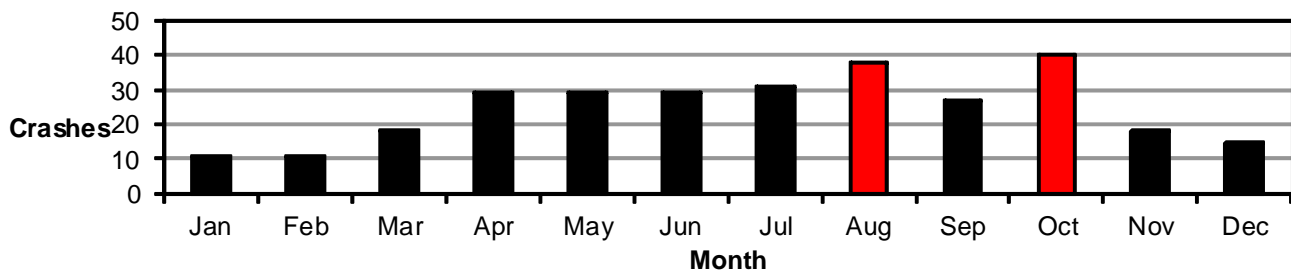
- Over the past 10 years, Salt Lake County accounted for nearly one-fourth (24.7%) of the fatal crashes involving drunk drivers.
- Salt Lake, Utah, Tooele, Summit, Davis, and Weber counties had the highest number of fatal crashes involving drunk drivers over the past 10 years.
- Daggett County had no fatal crashes involving drunk drivers over the past 10 years.



Trends

Fatal Crashes Involving Drunk Drivers by Month (Utah 2007-2016)

Fatal Crashes Involving Drunk Drivers												
Month	Year										Total	
	2007	2008	2009	2010	2011	2012	2013	2014	2015	2016	#	%
January	1	1	0	1	1	0	0	3	1	3	11	3.7%
February	1	3	0	0	1	1	2	0	2	1	11	3.7%
March	2	3	0	2	4	2	1	0	1	3	18	6.1%
April	4	2	3	2	3	2	4	4	4	1	29	9.8%
May	3	1	7	0	2	1	1	6	6	2	29	9.8%
June	4	3	3	3	4	2	2	2	4	2	29	9.8%
July	5	3	2	2	3	1	4	5	2	4	31	10.5%
August	3	5	5	5	4	2	2	3	4	5	38	12.8%
September	6	2	2	1	5	1	2	4	2	2	27	9.1%
October	5	2	4	5	4	3	3	5	3	6	40	13.5%
November	3	4	0	2	0	1	2	2	2	2	18	6.1%
December	0	3	2	1	2	3	0	3	0	1	15	5.1%
Total	37	32	28	24	33	19	23	37	31	32	296	100.0%



- Over the past 10 years, October and August were the months with the highest number of fatal crashes involving a drunk driver.
- Over the past 10 years, January and February had the lowest number of fatal crashes involving a drunk driver.

Fatal Crashes Involving Drunk Drivers by Day of Week (Utah 2007-2016)

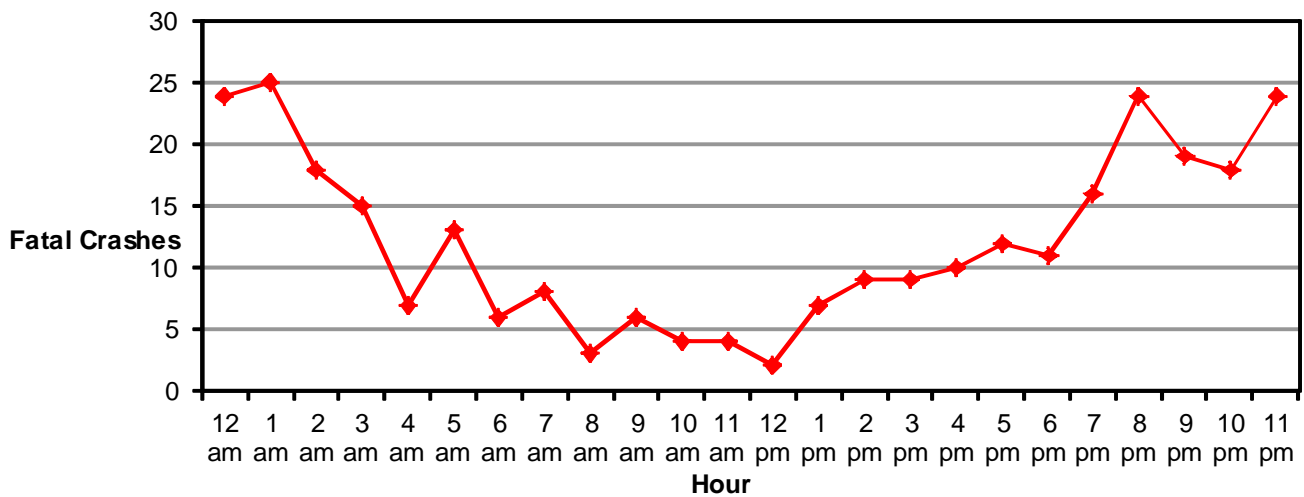
Fatal Crashes Involving Drunk Drivers												
Day of Week	Year										Total	
	2007	2008	2009	2010	2011	2012	2013	2014	2015	2016	#	%
Sunday	8	4	5	2	7	4	5	2	8	4	49	16.6%
Monday	2	2	6	6	1	0	2	4	0	4	27	9.1%
Tuesday	2	2	1	2	3	1	4	3	2	4	24	8.1%
Wednesday	4	3	4	2	3	2	3	2	4	2	29	9.8%
Thursday	3	7	3	3	8	0	3	7	4	5	43	14.5%
Friday	4	5	3	2	5	3	3	5	2	5	37	12.5%
Saturday	14	9	6	7	6	9	3	14	11	8	87	29.4%
Total	37	32	28	24	33	19	23	37	31	32	296	100.0%

- Over the past 10 years, Saturday and Sunday had the highest number of fatal crashes involving a drunk driver.
- Over the past 10 years, Tuesday and Monday had the lowest number of fatal crashes involving a drunk driver.

Trends

Fatal Crashes Involving Drunk Drivers by Hour (Utah 2007-2016)

Fatal Crashes Involving Drunk Drivers												
Hour	Year										Total	
	2007	2008	2009	2010	2011	2012	2013	2014	2015	2016	#	%
Midnight	5	2	6	1	3	2	0	2	2	1	24	8.2%
1 a.m.	4	3	3	1	3	1	3	4	1	2	25	8.5%
2 a.m.	1	4	0	1	2	0	2	2	3	3	18	6.1%
3 a.m.	3	0	1	1	2	1	0	1	2	4	15	5.1%
4 a.m.	0	0	1	1	0	0	0	2	1	2	7	2.4%
5 a.m.	2	1	0	0	1	1	1	1	3	3	13	4.4%
6 a.m.	0	1	0	2	1	0	0	1	1	0	6	2.0%
7 a.m.	0	2	0	1	0	1	2	0	1	1	8	2.7%
8 a.m.	0	0	2	0	0	0	1	0	0	0	3	1.0%
9 a.m.	0	0	1	2	1	0	0	1	1	0	6	2.0%
10 a.m.	0	1	2	0	1	0	0	0	0	0	4	1.4%
11 a.m.	2	1	0	0	0	0	1	0	0	0	4	1.4%
Noon	0	2	0	0	0	0	0	0	0	0	2	0.7%
1 p.m.	0	0	2	0	0	0	1	2	0	2	7	2.4%
2 p.m.	1	0	0	2	0	1	1	2	0	2	9	3.1%
3 p.m.	1	1	1	1	1	1	0	0	0	3	9	3.1%
4 p.m.	0	0	1	0	3	1	0	1	3	1	10	3.4%
5 p.m.	0	0	1	1	2	2	1	1	3	1	12	4.1%
6 p.m.	1	0	1	0	1	0	1	4	3	0	11	3.7%
7 p.m.	2	2	0	2	3	1	1	2	0	3	16	5.4%
8 p.m.	4	3	4	2	2	2	3	4	0	0	24	8.2%
9 p.m.	4	4	1	1	3	0	1	2	1	2	19	6.5%
10 p.m.	3	2	1	1	2	2	3	2	2	0	18	6.1%
11 p.m.	3	2	0	4	2	3	1	3	4	2	24	8.2%
Total	36	31	28	24	33	19	23	37	31	32	294	100.0%



- Over the past 10 years, nighttime (8:00 p.m. –2:59 a.m.) had the highest number of fatal crashes involving a drunk driver.
- Over the past 10 years, mid-day (6:00 a.m.—3:59 p.m.) had the lowest number of fatal crashes involving a drunk driver.

Crash Conditions

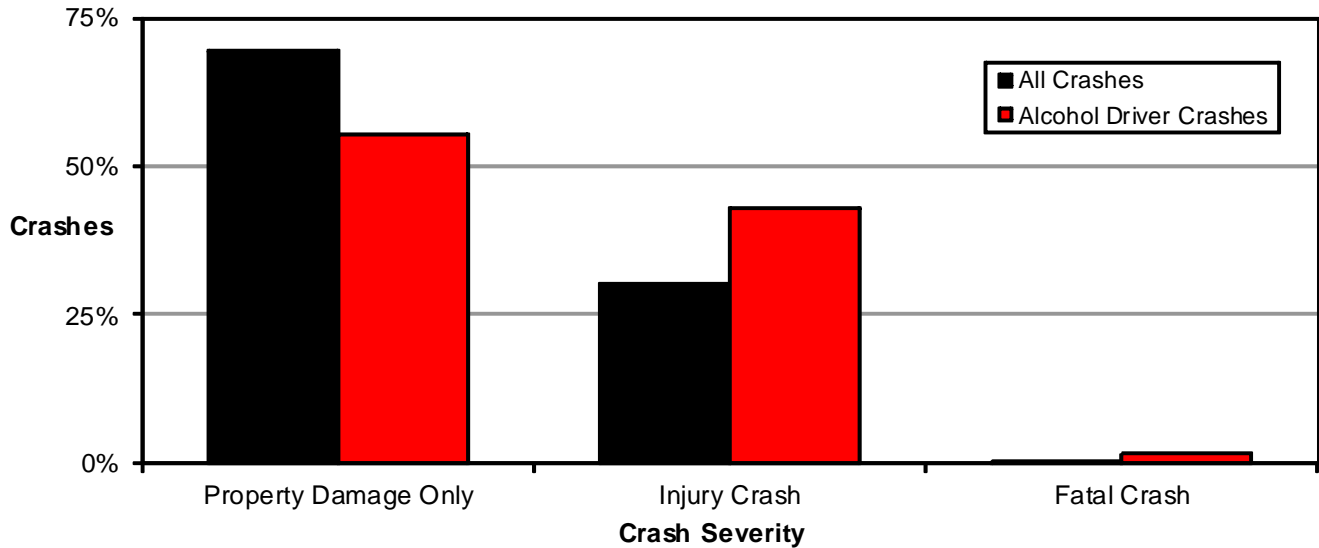
Alcohol-Related Driver Crashes by County (Utah 2016)

Alcohol-Related Driver Crashes								
County	PDO Crashes		Injury Crashes		Fatal Crashes		Total	
	#	Rate per 100 Million VMT	#	Rate per 100 Million VMT	#	Rate per 100 Million VMT	#	Rate per 100 Million VMT
Salt Lake	603	6.1	384	3.9	8	0.08	995	10.1
Weber	88	4.9	65	3.6	2	0.11	155	8.6
Tooele	28	3.1	25	2.8	6	0.66	59	6.5
Wasatch	12	3.0	13	3.2	0	0.00	25	6.2
Washington	54	3.3	46	2.8	2	0.12	102	6.1
Summit	24	2.8	24	2.8	2	0.23	50	5.8
Sanpete	2	0.8	11	4.4	1	0.40	14	5.6
Cache	27	2.7	28	2.8	0	0.00	55	5.5
Wayne	1	1.8	2	3.7	0	0.00	3	5.5
Rich	2	3.6	1	1.8	0	0.00	3	5.5
Davis	72	2.4	60	2.0	1	0.03	133	4.5
Uintah	10	2.3	8	1.8	0	0.00	18	4.1
Sevier	6	1.6	8	2.2	1	0.27	15	4.1
Morgan	3	2.0	3	2.0	0	0.00	6	4.0
Garfield	1	0.8	3	2.3	1	0.77	5	3.8
Iron	15	1.8	17	2.0	0	0.00	32	3.8
Carbon	5	1.4	7	2.0	1	0.29	13	3.7
Duchesne	5	1.5	7	2.1	0	0.00	12	3.7
Utah	97	2.1	72	1.5	3	0.06	172	3.6
Beaver	6	2.0	5	1.7	0	0.00	11	3.6
Kane	0	0.0	5	3.0	1	0.60	6	3.6
Box Elder	11	1.1	23	2.3	1	0.10	35	3.5
Emery	5	1.3	8	2.1	0	0.00	13	3.3
Piute	1	3.1	0	0.0	0	0.00	1	3.1
Millard	5	0.9	8	1.4	1	0.18	14	2.5
San Juan	2	0.6	5	1.5	1	0.30	8	2.4
Juab	4	0.9	4	0.9	0	0.00	8	1.8
Grand	3	0.7	4	1.0	0	0.00	7	1.7
Daggett	0	0.0	0	0.0	0	0.00	0	0.0
Statewide	1,092	3.5	846	2.7	32	0.10	1,970	6.4

- Salt Lake (10.1), Weber (8.6), and Tooele (6.5) counties had the highest rates of alcohol-related driver total crashes per 100 million vehicle miles traveled.
- Daggett (0.0), Grand (1.7), and Juab (1.8) counties had the lowest rates of alcohol-related driver total crashes per 100 million vehicle miles traveled.
- Salt Lake County had over one-half (50.5%) of the fatal drunk driver crashes.

Crash Conditions

Alcohol-Related Driver Crash Severity (Utah 2016)



- Alcohol-related driver crashes were more likely to have a death or injury than other crashes.
- A higher percentage of alcohol-related driver crashes (42.9%) resulted in an injury compared to all motor vehicle crashes that resulted in an injury (30.0%).
- In addition, a higher percentage of alcohol-related driver crashes were fatal (1.6%) compared to all motor vehicle crashes (0.4%).

Alcohol-Related Driver Crashes by Month (Utah 2016)

Alcohol-Related Driver Crashes								
Month	PDO Crashes		Injury Crashes		Fatal Crashes		Total	
	#	Rate per Day	#	Rate per Day	#	Rate per Day	#	Rate per Day
January	107	3.5	69	2.2	3	0.10	179	5.8
February	74	2.6	57	2.0	1	0.03	132	4.6
March	80	2.6	63	2.0	3	0.10	146	4.7
April	91	3.0	72	2.4	1	0.03	164	5.5
May	80	2.6	65	2.1	2	0.06	147	4.7
June	86	2.9	77	2.6	2	0.07	165	5.5
July	90	2.9	75	2.4	4	0.13	169	5.5
August	86	2.8	82	2.6	5	0.16	173	5.6
September	83	2.8	76	2.5	2	0.07	161	5.4
October	96	3.1	74	2.4	6	0.19	176	5.7
November	114	3.8	60	2.0	2	0.07	176	5.9
December	105	3.4	76	2.5	1	0.03	182	5.9
Total	1,092	3.0	846	2.3	32	0.09	1,970	5.4

- Overall, the highest rates per day of alcohol-related driver crashes were in November (5.9) and December (5.9) with the lowest rate per day in February (4.6), March (4.7), and May (4.7).
- The highest rate per day of fatal drunk driver crashes occurred in October and August.

Crash Conditions

Alcohol-Related Driver Crashes by Day of Week (Utah 2016)

Alcohol-Related Driver Crashes								
Day of Week	PDO Crashes		Injury Crashes		Fatal Crashes		Total	
	#	%	#	%	#	%	#	%
Sunday	221	20.2%	179	21.2%	4	12.5%	404	20.5%
Monday	111	10.2%	91	10.8%	4	12.5%	206	10.5%
Tuesday	103	9.4%	85	10.0%	4	12.5%	192	9.7%
Wednesday	97	8.9%	82	9.7%	2	6.3%	181	9.2%
Thursday	107	9.8%	104	12.3%	5	15.6%	216	11.0%
Friday	190	17.4%	128	15.1%	5	15.6%	323	16.4%
Saturday	263	24.1%	177	20.9%	8	25.0%	448	22.7%
Total	1,092	100.0%	846	100.0%	32	100.0%	1,970	100.0%

- The highest amount of alcohol-related driver total crashes occurred on Saturday and Sunday.
- The highest amount of drunk driver fatal crashes occurred on Saturday.

Alcohol-Related Driver Crashes by Hour (Utah 2016)

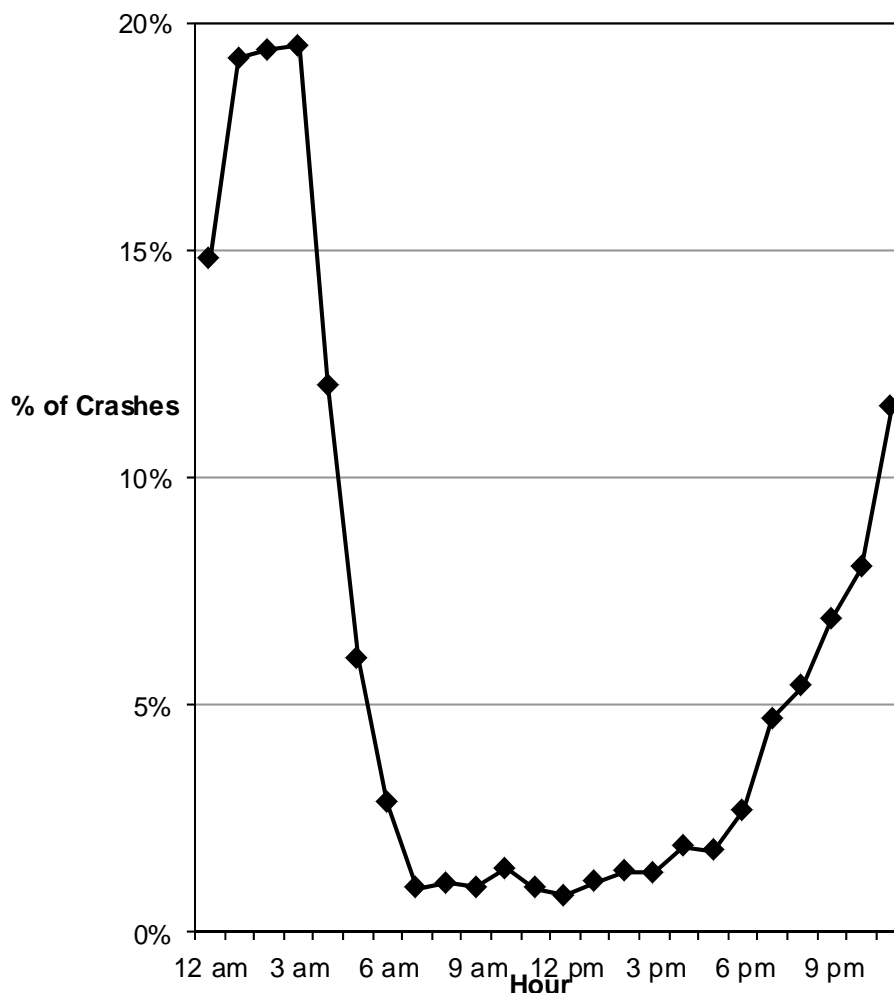
Alcohol-Related Driver Crashes								
Hour	PDO Crashes		Injury Crashes		Fatal Crashes		Total	
	#	%	#	%	#	%	#	%
Midnight	78	7.1%	68	8.0%	1	3.1%	147	7.5%
1 a.m.	66	6.0%	59	7.0%	2	6.3%	127	6.4%
2 a.m.	62	5.7%	34	4.0%	3	9.4%	99	5.0%
3 a.m.	49	4.5%	36	4.3%	4	12.5%	89	4.5%
4 a.m.	30	2.7%	25	3.0%	2	6.3%	57	2.9%
5 a.m.	26	2.4%	21	2.5%	3	9.4%	50	2.5%
6 a.m.	31	2.8%	16	1.9%	0	0.0%	47	2.4%
7 a.m.	12	1.1%	17	2.0%	1	3.1%	30	1.5%
8 a.m.	23	2.1%	15	1.8%	0	0.0%	38	1.9%
9 a.m.	18	1.6%	8	0.9%	0	0.0%	26	1.3%
10 a.m.	20	1.8%	13	1.5%	0	0.0%	33	1.7%
11 a.m.	11	1.0%	16	1.9%	0	0.0%	27	1.4%
Noon	15	1.4%	12	1.4%	0	0.0%	27	1.4%
1 p.m.	20	1.8%	16	1.9%	2	6.3%	38	1.9%
2 p.m.	27	2.5%	24	2.8%	2	6.3%	53	2.7%
3 p.m.	31	2.8%	28	3.3%	3	9.4%	62	3.1%
4 p.m.	51	4.7%	46	5.4%	1	3.1%	98	5.0%
5 p.m.	65	6.0%	47	5.6%	1	3.1%	113	5.7%
6 p.m.	70	6.4%	58	6.9%	0	0.0%	128	6.5%
7 p.m.	77	7.1%	64	7.6%	3	9.4%	144	7.3%
8 p.m.	74	6.8%	46	5.4%	0	0.0%	120	6.1%
9 p.m.	69	6.3%	76	9.0%	2	6.3%	147	7.5%
10 p.m.	82	7.5%	51	6.0%	0	0.0%	133	6.8%
11 p.m.	85	7.8%	50	5.9%	2	6.3%	137	7.0%
Total	1,092	100.0%	846	100.0%	32	100.0%	1,970	100.0%

- Alcohol-related driver total crashes peaked in the evening and early morning hours (6:00 p.m. to 1:59 a.m.).
- Fatal drunk driver crashes were highest during the 3 a.m. hour.

Crash Conditions

Percent of Total Crashes with an Alcohol-Related Driver by Hour (Utah 2016)

Alcohol-Related Driver Crashes			
Hour	Total Crashes		
	All #	Alcohol #	%
Midnight	993	147	14.8%
1 a.m.	660	127	19.2%
2 a.m.	510	99	19.4%
3 a.m.	456	89	19.5%
4 a.m.	474	57	12.0%
5 a.m.	829	50	6.0%
6 a.m.	1,639	47	2.9%
7 a.m.	3,169	30	0.9%
8 a.m.	3,576	38	1.1%
9 a.m.	2,671	26	1.0%
10 a.m.	2,379	33	1.4%
11 a.m.	2,843	27	0.9%
Noon	3,347	27	0.8%
1 p.m.	3,504	38	1.1%
2 p.m.	3,977	53	1.3%
3 p.m.	4,790	62	1.3%
4 p.m.	5,252	98	1.9%
5 p.m.	6,365	113	1.8%
6 p.m.	4,761	128	2.7%
7 p.m.	3,072	144	4.7%
8 p.m.	2,220	120	5.4%
9 p.m.	2,140	147	6.9%
10 p.m.	1,657	133	8.0%
11 p.m.	1,187	137	11.5%
Total	62,471	1,970	3.2%



- While 3.2% of total crashes were alcohol-related, 15.3% of the crashes occurring during the hours of 11:00 p.m.-4:59 a.m. were alcohol-related.

Persons in Alcohol-Related Driver Crashes (Utah 2016)

Persons (Alcohol-Related Driver Crashes)								
Person Type	Non-Injured		Injured		Killed		Total	
	#	%	#	%	#	%	#	%
Driver	2,190	73.5%	897	73.5%	29	80.6%	3,116	73.6%
Passenger	786	26.4%	315	25.8%	7	19.4%	1,108	26.2%
Pedestrian	4	0.1%	7	0.6%	0	0.0%	11	0.3%
Bicyclist	0	0.0%	1	0.1%	0	0.0%	1	0.0%
Total	2,980	100.0%	1,220	100.0%	36	100.0%	4,236	100.0%

- Of the 4,236 people in alcohol-related driver crashes, 73.6% were drivers, 26.2% were passengers, and 0.3% were non-motorists.

Crash Conditions

Alcohol-Related Crashes by Day of Week and Hour (Utah 2016)

Alcohol-Related Driver Crashes								
Hour	Day of Week							Total #
	Sun	Mon	Tue	Wed	Thu	Fri	Sat	
Midnight	45	12	14	12	13	17	34	147
1 a.m.	35	4	9	12	13	17	37	127
2 a.m.	30	10	7	7	3	13	30	100
3 a.m.	29	10	3	3	8	8	28	89
4 a.m.	13	5	6	3	5	6	19	57
5 a.m.	22	4	4	3	2	7	8	50
6 a.m.	18	4	3	2	4	5	11	47
7 a.m.	7	3	4	2	2	5	7	30
8 a.m.	6	4	4	1	6	7	11	39
9 a.m.	9	3	3	1	1	7	3	27
10 a.m.	4	3	6	5	9	3	4	34
11 a.m.	5	4	4	2	4	1	7	27
Noon	6	2	2	1	4	7	6	28
1 p.m.	6	5	4	2	3	9	7	36
2 p.m.	6	10	6	6	7	6	11	52
3 p.m.	11	6	6	5	9	11	14	62
4 p.m.	13	14	10	12	10	23	16	98
5 p.m.	10	18	17	16	13	22	19	115
6 p.m.	18	12	16	18	20	24	20	128
7 p.m.	26	9	19	18	22	26	25	145
8 p.m.	24	13	11	10	17	23	23	121
9 p.m.	22	16	14	18	18	27	31	146
10 p.m.	20	19	8	11	11	26	38	133
11 p.m.	20	17	10	12	10	24	43	136
Total	405	207	190	182	214	324	452	1,974

High = 17+
Medium = 9-16
Low = 0-8

- Alcohol-related crashes were highest from Friday 4:00 p.m. to Saturday 4:59 a.m., Saturday 5:00 p.m. to Sunday 3:59 a.m., and Sunday 6:00 p.m. to 11:59 p.m. This is in contrast to when most crashes occur Monday through Saturday 2:00 p.m. to 6:59 p.m.

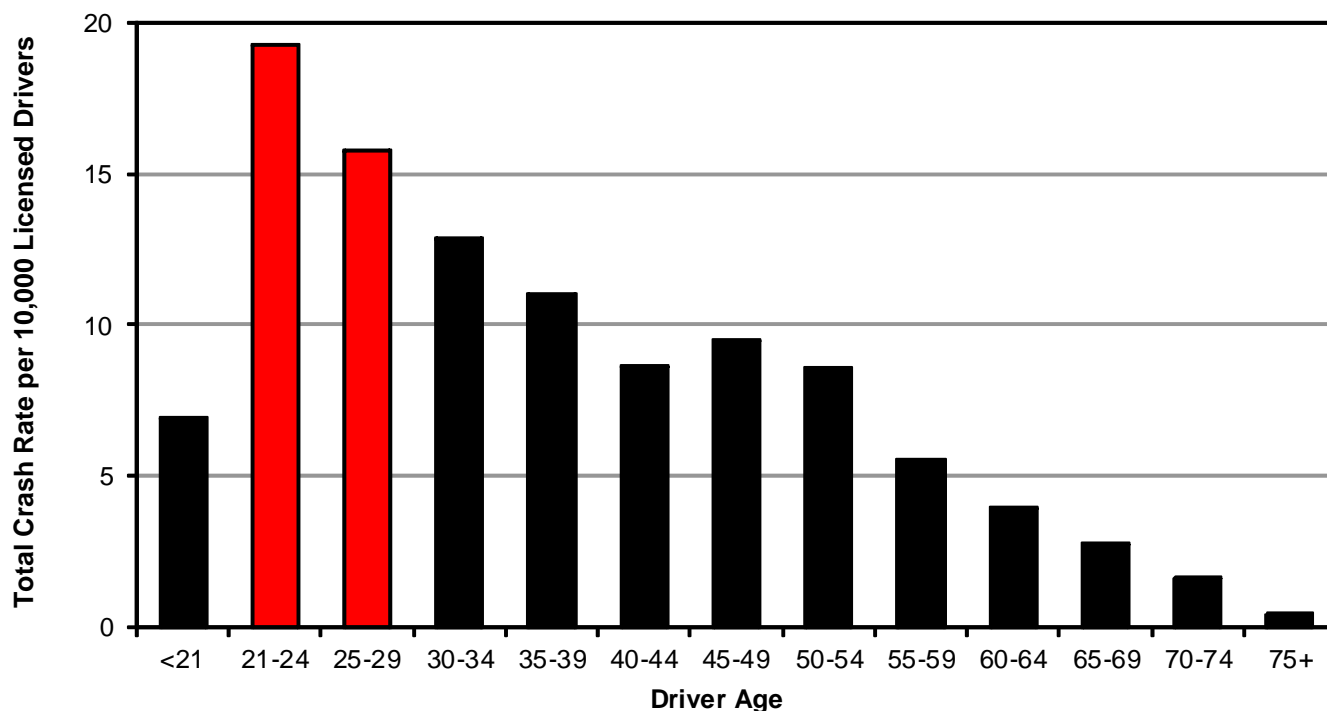
Previous Driving Under the Influence Convictions of Drunk Drivers in Fatal Crashes (Utah 2016)

- Of the 32 drunk drivers in fatal crashes, three drivers (9.4%) had been previously convicted of driving under the influence in the past five years.

Crash Conditions

Age of Alcohol-Related Drivers in Crashes (Utah 2016)

Age	Alcohol-Related Drivers											
	PDO Crashes			Injury Crashes			Fatal Crashes			Total		
	#	%	Rate per 10,000 Drivers	#	%	Rate per 10,000 Drivers	#	%	Rate per 10,000 Drivers	#	%	Rate per 10,000 Drivers
<21	89	8.1%	3.9	66	7.7%	2.9	2	6.3%	0.09	157	7.9%	6.9
21-24	174	15.8%	10.0	155	18.1%	8.9	5	15.6%	0.29	334	16.8%	19.3
25-29	185	16.8%	8.6	148	17.3%	6.9	8	25.0%	0.37	341	17.2%	15.8
30-34	155	14.1%	7.6	105	12.3%	5.1	4	12.5%	0.20	264	13.3%	12.9
35-39	137	12.5%	6.5	95	11.1%	4.5	1	3.1%	0.05	233	11.7%	11.0
40-44	84	7.7%	4.6	69	8.1%	3.8	3	9.4%	0.17	156	7.9%	8.6
45-49	86	7.8%	5.6	58	6.8%	3.7	3	9.4%	0.19	147	7.4%	9.5
50-54	61	5.6%	4.4	57	6.7%	4.1	1	3.1%	0.07	119	6.0%	8.6
55-59	36	3.3%	2.5	41	4.8%	2.8	3	9.4%	0.21	80	4.0%	5.5
60-64	29	2.6%	2.2	22	2.6%	1.7	1	3.1%	0.08	52	2.6%	3.9
65-69	19	1.7%	1.8	11	1.3%	1.0	0	0.0%	0.00	30	1.5%	2.8
70-74	5	0.5%	0.6	7	0.8%	0.9	1	3.1%	0.13	13	0.7%	1.6
75+	1	0.1%	0.1	4	0.5%	0.4	0	0.0%	0.00	5	0.3%	0.4
Unknown	37	3.4%	n/a	18	2.1%	n/a	0	0.0%	n/a	55	2.8%	n/a
Total	1,098	100.0%	5.3	856	100.0%	4.1	32	100.0%	0.15	1,986	100.0%	9.5



- Drivers aged 21-29 years had the highest rate of total alcohol-related driver crashes.
- Drivers aged 21-29 years had the highest rate of drunk driver fatal crashes.
- 157 (7.9%) of the alcohol-related drivers in total crashes were under the age of 21 years.
- Two of the 32 (6.3%) drunk drivers in fatal crashes were under the age of 21 years.
- There is a rapid decline of alcohol-related drivers as age increases with less than 10% of alcohol-related drivers over the age of 55 years (9.3%).

Crash Conditions

Gender of Alcohol-Related Drivers in Crashes (Utah 2016)

Alcohol-Related Drivers								
Gender	PDO Crashes		Injury Crashes		Fatal Crashes		Total	
	#	%	#	%	#	%	#	%
Male	786	71.6%	644	75.2%	24	75.0%	1,454	73.2%
Female	284	25.9%	200	23.4%	8	25.0%	492	24.8%
Unknown	28	2.6%	12	1.4%	0	0.0%	40	2.0%
Total	1,098	100.0%	856	100.0%	32	100.0%	1,986	100.0%

- Male drivers were much more likely to be an alcohol-related driver in a crash. Male drivers represented 73.2% of the alcohol-related drivers in total crashes and 75.0% of drunk drivers in fatal crashes.

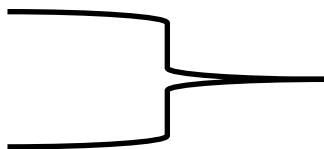
Alcohol-Related Crashes by Vehicle Type (Utah 2016)

Alcohol-Related Vehicles												
Vehicle Type	Property Damage Only			Injury			Fatal			Total		
	All	Alcohol		All	Alcohol		All	Alcohol		All	Alcohol	
	#	#	%	#	#	%	#	#	%	#	#	%
Off Road Vehicle	35	0	0.0%	146	12	8.2%	9	0	0.0%	190	12	6.3%
Motorcycle	175	2	1.1%	972	37	3.8%	41	5	12.2%	1,188	44	3.7%
Pickup Truck	12,891	235	1.8%	5,016	163	3.2%	81	8	9.9%	17,988	406	2.3%
Passenger Car	40,778	625	1.5%	18,918	441	2.3%	151	12	7.9%	59,847	1,078	1.8%
RV/Motorhome	94	2	2.1%	24	0	0.0%	1	0	0.0%	119	2	1.7%
SUV	17,169	193	1.1%	7,925	173	2.2%	78	6	7.7%	25,172	372	1.5%
Van	4,128	33	0.8%	2,080	23	1.1%	13	1	7.7%	6,221	57	0.9%
Heavy Truck	2,917	7	0.2%	767	7	0.9%	26	0	0.0%	3,710	14	0.4%
Bus	344	0	0.0%	73	0	0.0%	1	0	0.0%	418	0	0.0%
Other	43	0	0.0%	13	0	0.0%	2	0	0.0%	58	0	0.0%
Unknown	1,241	1	0.1%	192	0	0.0%	8	0	0.0%	1,441	1	0.1%
Total	79,815	1,098	1.4%	36,126	856	2.4%	411	32	7.8%	116,352	1,986	1.7%

- Off Road Vehicle and motorcycle had the highest % of vehicles in a crash driven by an alcohol-related driver.

Drivers in Fatal Crashes by Blood Alcohol Concentration (BAC) (Utah 2016)

All Drivers in Fatal Crashes			
BAC	Drivers		
	#	%	% of Tested
.00	191	47.5%	84.1%
.01 - .07	4	1.0%	1.8%
.08 - .15	11	2.7%	4.8%
.16 - .23	15	3.7%	6.6%
.24 - .31	3	0.7%	1.3%
.32+	3	0.7%	1.3%
Not Tested/Unknown	175	43.5%	n/a
Total	402	100.0%	



Drunk Drivers in Fatal Crashes		
BAC	Drivers	
	#	%
.08 - .15	11	34.4%
.16 - .23	15	46.9%
.24 - .31	3	9.4%
.32+	3	9.4%
Total	32	100.0%

- Of the 227 drivers in fatal crashes who were tested for alcohol, 84% had a BAC of 0.00, 2% had a BAC of 0.01-0.07, and 14% were over the legal limit of 0.08. 21 of the 32 (66%) drivers in fatal crashes who tested over the legal limit for alcohol had BAC levels at or above twice the legal limit of 0.08.