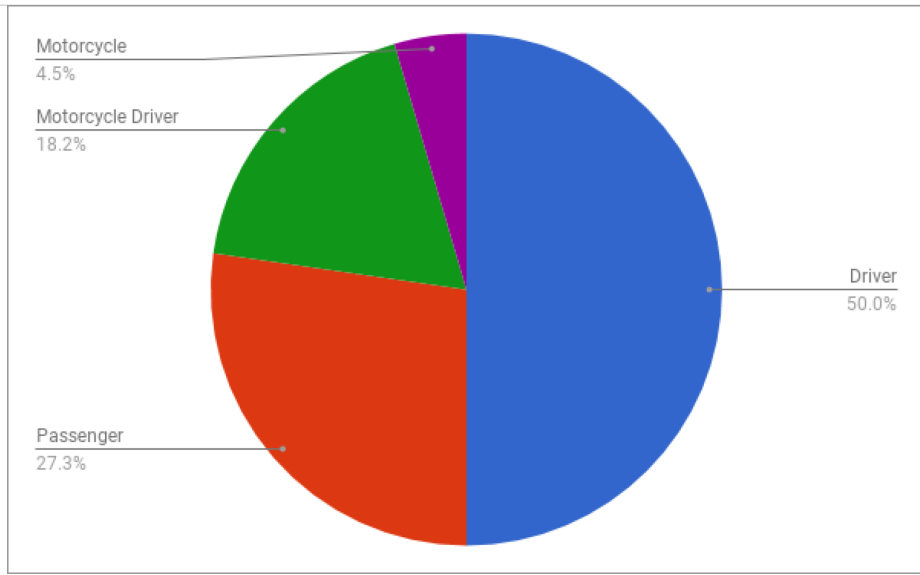


Crash Types		
Total Fatal Crashes	11	
Victim Type		
Total Victims	11	
Driver	6	0%
Passenger	0	0%
Pedestrian	4	0%
Motorcycle Driver	1	0%
Motorcycle Passenger	0	0%
Bicyclist	0	0%
Teen (13-19)	0	0%
Gender		
Male	7	0%
Female	4	0%



	Yes/Correct		Yes/ Not Correct		Yes/Unknown		No		Unknown		Not Applicable	
Seatbelts	0	0%	0	0%	0	0%	1	20%	1	17%	4	
Helmets (Motorcycles, Bicycles, ATVs)	0	0%	0	0%	0	0%	0	0%	0	0%		
Speed	0	0%					6	100%	0	0%		

The numbers on this spreadsheet are preliminary and could change anytime. Before sharing this information with outside sources, please contact me for confirmation.