

I am a mosquito



Family: Culicidae Mosquito

I am NOT a mosquito



Family: Chironomidae midge fly

As you look at these two pictures what looks the same and what looks different.

The things that are the same

- 6 legs (3 pair)
- Two Wings
- 3 body parts (Head, Thorax, and Abdomen)

The things that are different. **(this is important to help identify a mosquito from a midge fly)**

- The mosquito has a proboscis (needle like mouth part) the midge fly does not. This is the thing that you want to look for to tell the difference between the midge fly and the mosquito.
- Midges have hairy antenna most female mosquitoes do not.

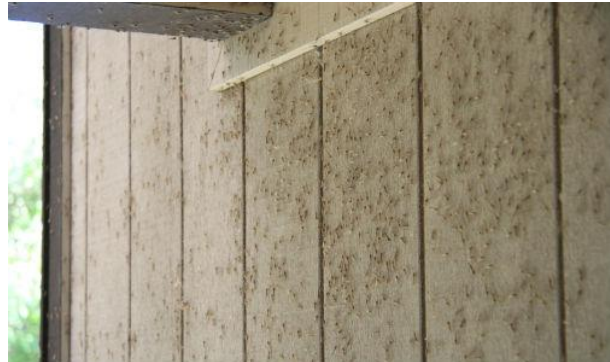
Mosquitoes also behave very differently than a midge fly.



- Mosquitoes will fly mostly in the evening and they will swarm to you and land on you seeking a blood meal.



- Midges will also fly at night but they form large columns that circle and rise in the air above you.
- You will find at times midges in huge numbers on your windows, garage doors, and on trees during the day. You will never find mosquitoes in the day in these places. During the day, they will be in the shade in bushes or the grass.



So, when you are out at night and wondering, is it a mosquito or is it a midge, remember what you have learned today. If it is a mosquito give us a call (801-851-7637) and we will come and help you out. If it is a midge fly, enjoy this gift from Utah Lake.